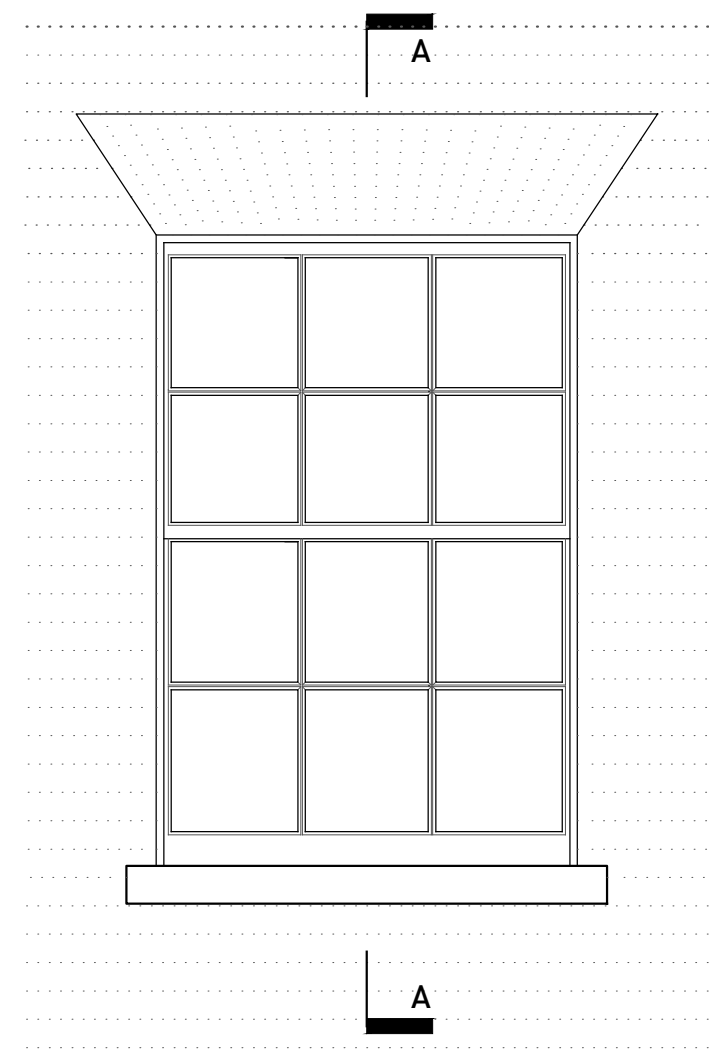
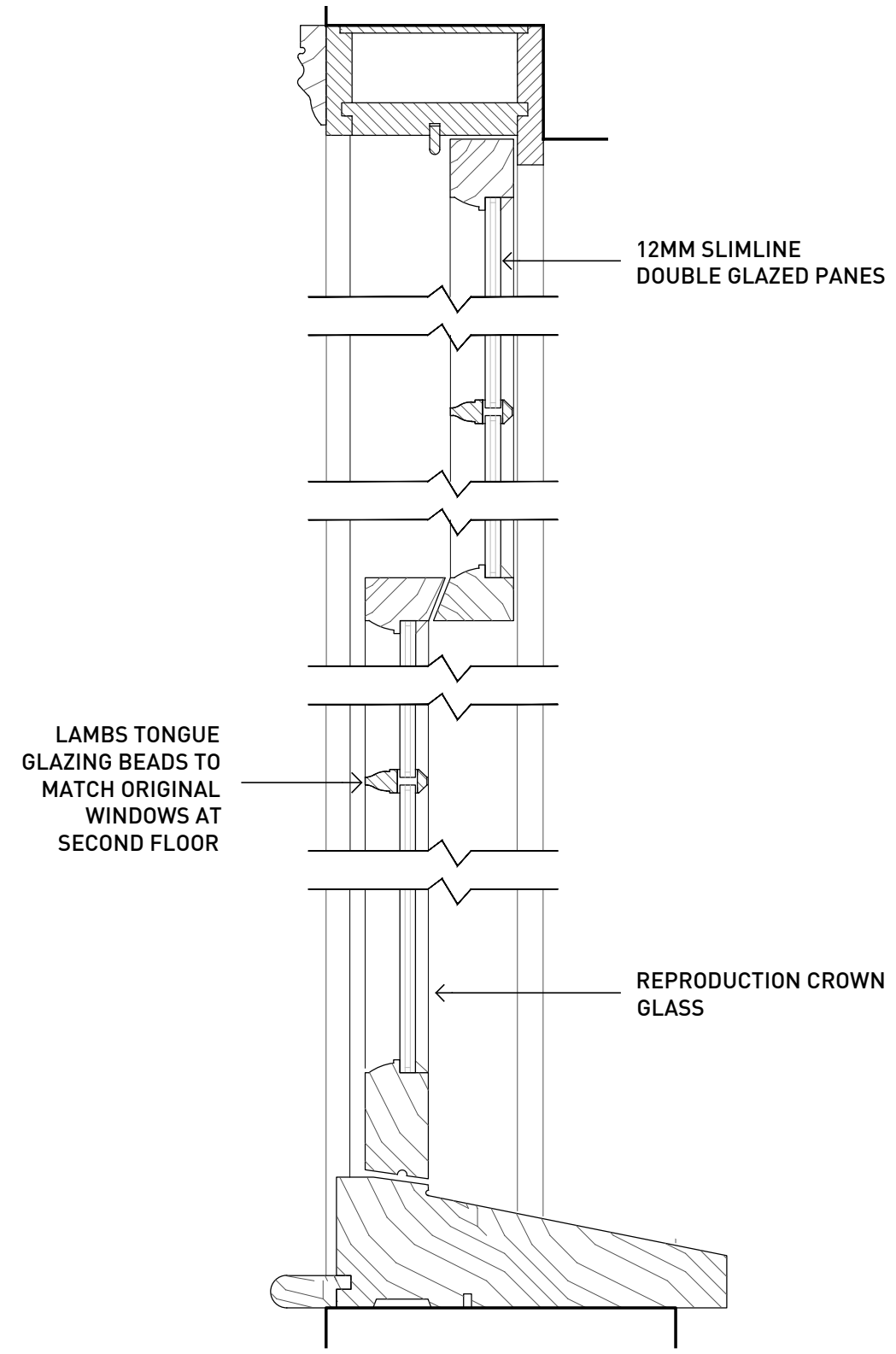


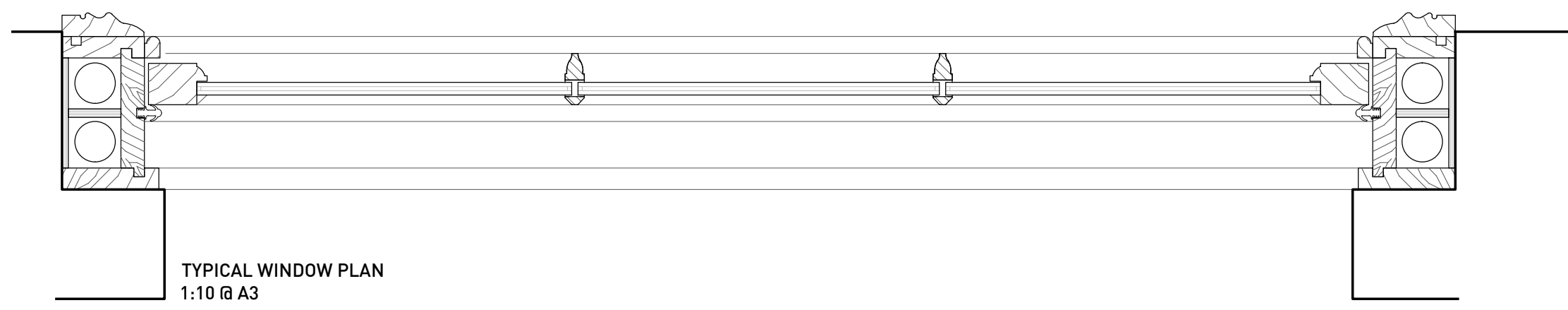
- GENERAL NOTES
1. No dimensions to be scaled from this drawing
 2. Any Discrepancies found between this drawing and other documents should be referred immediately to the consultants
 3. This drawing should be removed from currency immediately a revised version is issued
 4. All dimensions in mm's
Nash Baker Ltd, trading as Nash Baker Architects, Company Number. 7488262
Directors: Simon Baker RIBA, Howard Nash RIBA
- © Copyright Reserved
This drawing and its subject matter are the confidential property of Nash Baker Architects and shall not be copied, reproduced, used or disclosed to others without the prior written authority of Nash Baker Architects



TYPICAL DOUBLE GLAZED WINDOW ELEVATION
1:20 @ A3



TYPICAL WINDOW SECTION A-A
1:10 @ A3



TYPICAL WINDOW PLAN
1:10 @ A3

| Rev | Date | Reason For Issue | Chk |
|-----|------|------------------|-----|
|-----|------|------------------|-----|

| | | | |
|---------------------------------|------------------------------------------------------------------------|----------------|-----|
| NASH BAKER ARCHITECTS | 167-169 KENSINGTON HIGH STREET LONDON, W8 6SH | | |
| | T + 44 (0) 207 229 1558 INFO@NASHBAKER.CO.UK WWW.NASHBAKER.CO.UK | | |
| PROJECT | 79 GRAYS INN ROAD LONDON, WC1X 8TP | | |
| DRAWING TITLE | PROPOSED TYPICAL DOUBLE GLAZED SASH WINDOW DETAILS | | |
| JOB NUMBER | 1501 | DRAWING NUMBER | 250 |
| DRAWN | KM | CHECKED | - |
| SCALE | 1:20 & 1:10 | PAPER SIZE | A3 |
| DATE | 17.03.15 | REVISION | - |