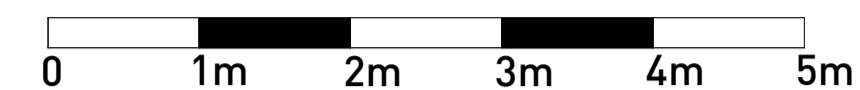


GENERAL NOTES

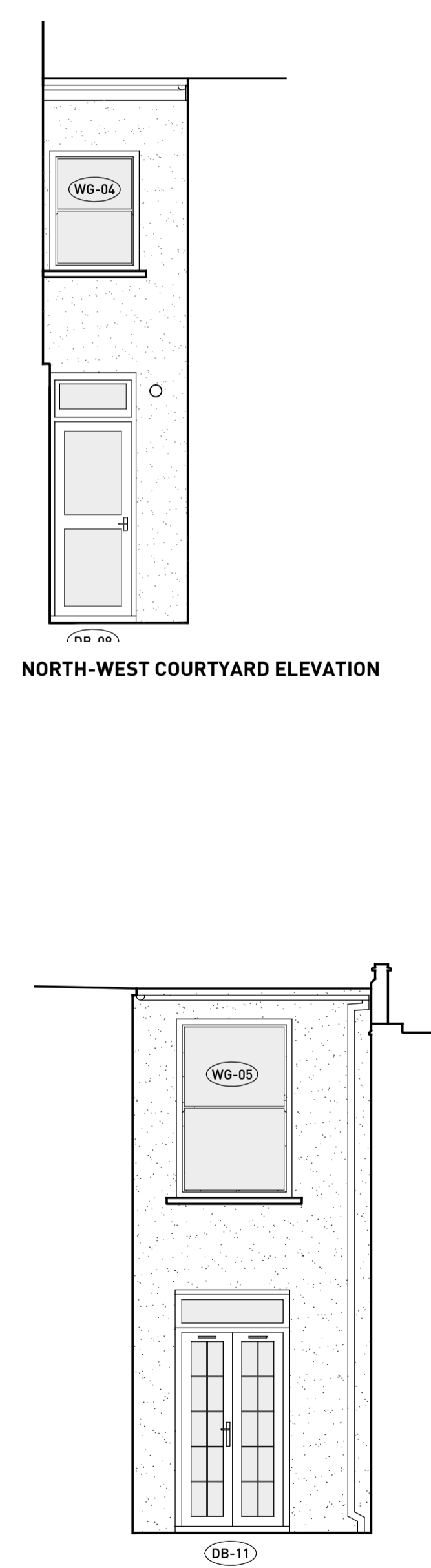
- No dimensions to be scaled from this drawing for construction purposes
  - Any Discrepancies found between this drawing and other documents should be referred immediately to the consultants
  - This drawing should be removed from currency immediately a revised version is issued
  - All dimensions in mm's
- Nash Baker Ltd, trading as Nash Baker Architects. Company Number. 7488242  
 Directors: Simon Baker RIBA, Howard Nash RIBA  
 © Copyright Reserved  
 This drawing and its subject matter are the confidential property of Nash Baker Architects and shall not be copied, reproduced, used or disclosed to others without the prior written authority of Nash Baker Architects



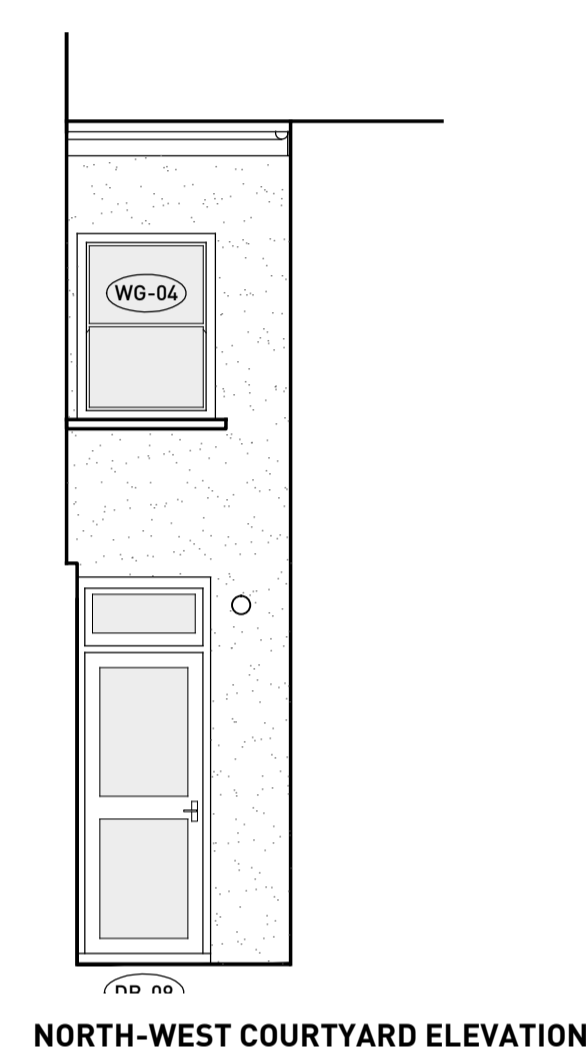
NORTH-EAST ELEVATION



NORTH-EAST ELEVATION



NORTH-EAST COURTYARD ELEVATION



NORTH-WEST COURTYARD ELEVATION

Job No.	Dwg No.	Rev.
1501	102	

A	19/03/2015	GENERAL AMENDMENTS - AF
Rev	Date	Reason For Issue

<b>NASH BAKER</b> ARCHITECTS	147-149 KENSINGTON HIGH STREET LONDON, W8 5SH T + 44 (0) 207 229 1558 INFO@NASHBAKER.CO.UK WWW.NASHBAKER.CO.UK
	PROJECT: 79 GRAYS INN ROAD, LONDON, WC1X 8TP DRAWING TITLE: EXISTING ELEVATIONS
JOB NUMBER: 1501	DRAWING NUMBER: 102
DRAWN: AF	CHECKED:
SCALE: 1:50	PAPER SIZE: A1
DATE: 02/03/2015	REVISION: