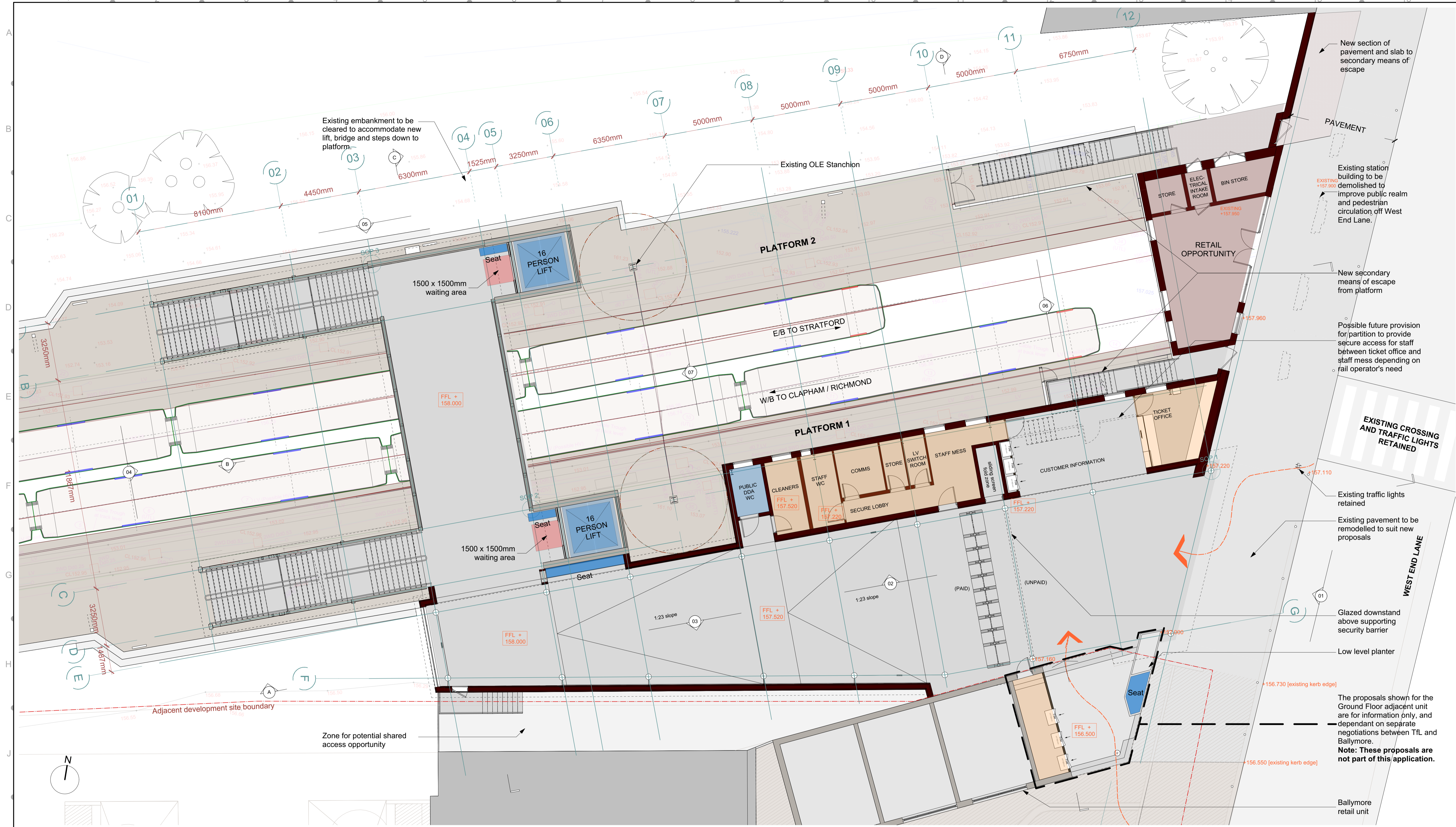


NOTES - LEGEND:



COORDINATES TO LONDON SURVEY GRID. PROJECT LEVEL DATUM IS 100 METRES BELOW NEWLYN DATUM.		© CROWN COPYRIGHT AND DATABASE RIGHTS - 2012 ORDNANCE SURVEY - 100035971		DO NOT SCALE DISTORTION CAN OCCUR		TIL - CAD COMPLIANCE CHECK PASS OR FAIL		PROJECT BRN INTERNAL PROJECT REF: 130340 BRN INTERNAL FILE REF: 003		LONDON OVERGROUND LOSTAT West Hampstead Station Redevelopment		SUITABILITY S2	
A01 20/04/15 General updates following design meeting 14/04/15		REV DATE DESCRIPTION		NAME DATE DESIGNED BY: sl 01/03/15 ENG CHECK BY: spc 01/03/15 CAD CHECK BY: APPROVED BY:		TITLE SITE PLAN PROPOSED PLAN		SHEET 1 of 1		DRAWING SHEET SIZE = A1		SCALE 1:100	
LSWH - EN31 - EAR - DPL - AEC - 00340		DRAWING NUMBER		REVISION A01				FR [for review] STATUS					



Existing embankment to be cleared to accommodate new lift, bridge and steps down to platform.

New section of pavement and slab to secondary means of escape

Existing station building to be demolished to improve public realm and pedestrian circulation off West End Lane.

New secondary means of escape from platform

Possible future provision for partition to provide secure access for staff between ticket office and staff mess depending on rail operator's need

EXISTING CROSSING AND TRAFFIC LIGHTS RETAINED

Existing traffic lights retained

Existing pavement to be remodelled to suit new proposals

Glazed downstand above supporting security barrier

Low level planter

The proposals shown for the Ground Floor adjacent unit are for information only, and dependent on separate negotiations between TfL and Ballymore.

Note: These proposals are not part of this application.

Ballymore retail unit

NOTES - LEGEND:

Blank area for notes and legend.

COORDINATES TO LONDON SURVEY GRID.
PROJECT LEVEL DATUM IS
100 METRES BELOW NEWLY DATUM.

© CROWN COPYRIGHT AND DATABASE
RIGHTS - 2012 ORDNANCE SURVEY - 100035971

DO NOT SCALE
DISTORTION CAN OCCUR

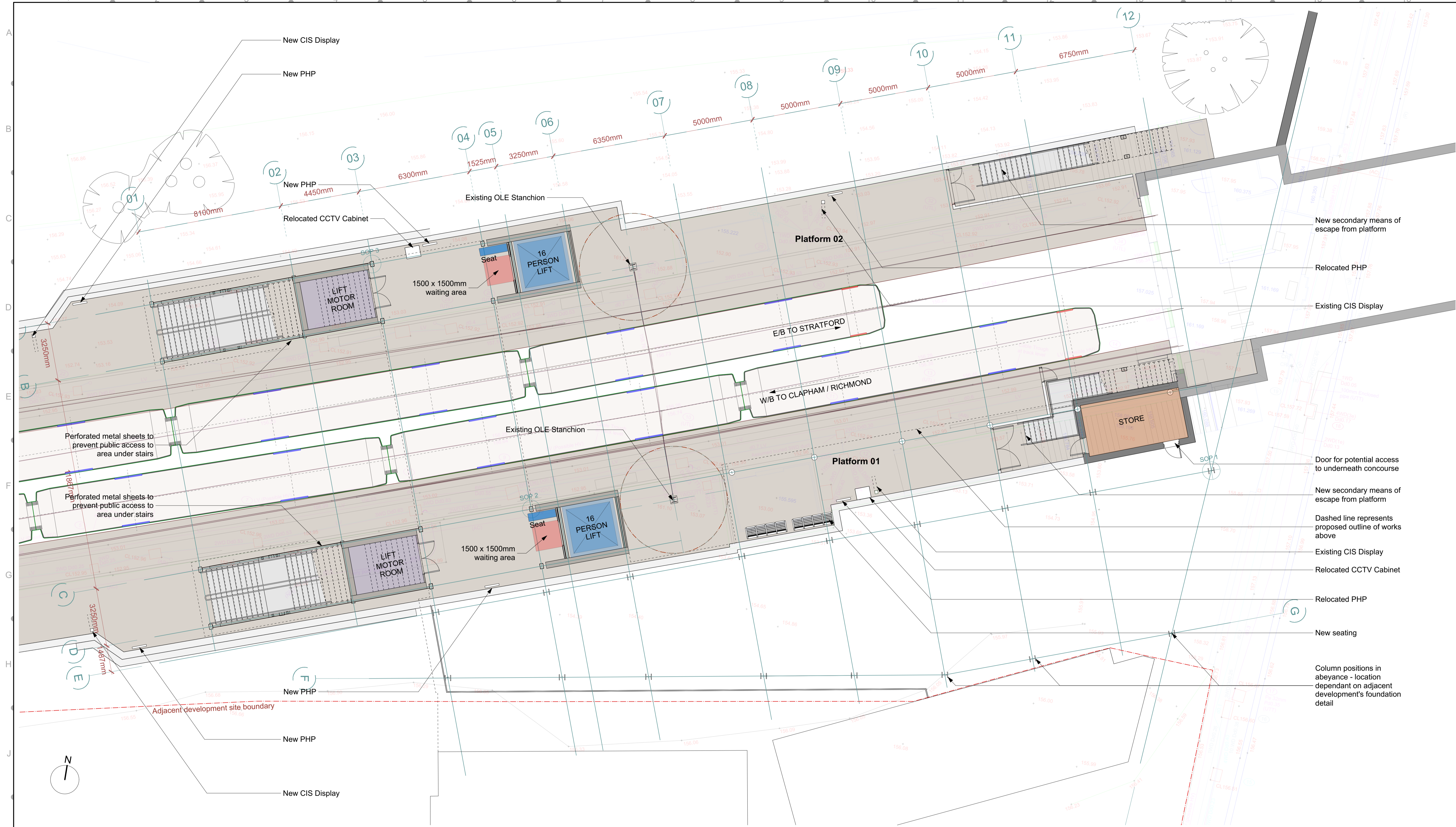
TfL - CAD COMPLIANCE CHECK

NAME	DATE
DESIGNED BY	01/03/15
ENG CHECK BY	01/03/15
CAD CHECK BY	
APPROVED BY	

PROJECT: LONDON OVERGROUND
LOSTAT West Hampstead Station Redevelopment

		SUITABILITY S2	
TITLE CONCOURSE LEVEL PROPOSED PLAN		REVISION A02	
SHEET 1 of 1	DRAWING SHEET SIZE = A1	SCALE 1:100	DRAWING NUMBER LSWH - EN31 - EAR - DPL - AEC - 00342

REV	DATE	DESCRIPTION	BY	CHK	APP	AUTH
A01	06/03/15	Existing crossing shown	sf	sc		
A01	20/04/15	General updates following design meeting 14/04/15. Revised grid and setting out point at station entrance	sf	sc		



- New secondary means of escape from platform
- Relocated PHP
- Existing CIS Display
- Door for potential access to underneath concourse
- New secondary means of escape from platform
- Dashed line represents proposed outline of works above
- Existing CIS Display
- Relocated CCTV Cabinet
- Relocated PHP
- New seating
- Column positions in abeyance - location dependant on adjacent development's foundation detail

NOTES - LEGEND:

COORDINATES TO LONDON SURVEY GRID. PROJECT LEVEL DATUM IS 100 METRES BELOW NEWLYN DATUM.	© CROWN COPYRIGHT AND DATABASE RIGHTS - 2012 ORDNANCE SURVEY - 100035971	DO NOT SCALE DISTORTION CAN OCCUR	TL - CAD COMPLIANCE CHECK PASS OR FAIL NAME DATE sfl 01/03/15 spc 01/03/15	PROJECT BRN INTERNAL PROJECT REF: 130640 BRN INTERNAL FILE REF: 005	PROJECT LONDON OVERGROUND LOSTAT West Hampstead Station Redevelopment													
TITLE PLATFORM LEVEL PROPOSED PLAN			SUITABILITY S2															
SHEET 1 of 1			SCALE 1:100															
DRAWING NUMBER LSWH - EN31 - EAR - DPL - AEC - 00341			REVISION A01		FR [for review] STATUS													
REVISIONS <table border="1" style="width: 100%; border-collapse: collapse;"> <thead> <tr> <th>REV</th> <th>DATE</th> <th>DESCRIPTION</th> <th>BY</th> <th>CHK</th> <th>APP</th> <th>AUTH</th> </tr> </thead> <tbody> <tr> <td>A01</td> <td>20/04/15</td> <td>General updates following design meeting 14/04/15. Revised grid and setting out point at station entrance</td> <td>sfl</td> <td>sc</td> <td></td> <td></td> </tr> </tbody> </table>			REV	DATE		DESCRIPTION	BY	CHK	APP	AUTH	A01	20/04/15	General updates following design meeting 14/04/15. Revised grid and setting out point at station entrance	sfl	sc			DRAWING NUMBER 13
REV	DATE	DESCRIPTION	BY	CHK	APP	AUTH												
A01	20/04/15	General updates following design meeting 14/04/15. Revised grid and setting out point at station entrance	sfl	sc														



NOTES - LEGEND:

KEY

- Direction of Falls
- RWO ● Indicative Rainwater outlet positions

REV	DATE	DESCRIPTION	BY	CHK	APP	AUTH
A01	20/04/15	General updates following design meeting 14/04/15. Revised grid and setting out point at station entrance	sl	sc		

COORDINATES TO LONDON SURVEY GRID, PROJECT LEVEL DATUM IS 100 METRES BELOW NEWLYN DATUM.		© CROWN COPYRIGHT AND DATABASE RIGHTS - 2012 ORDNANCE SURVEY - 100035971		DO NOT SCALE DISTORTION CAN OCCUR	
--	--	---	--	--	--

TL - CAD COMPLIANCE CHECK	
NAME	DATE
sl	01/03/15
spc	01/03/15

PROJECT: LONDON OVERGROUND
LOSTAT West Hampstead Station Redevelopment

TITLE: ROOF LEVEL PROPOSED PLAN

SHEET: 1 of 1

DRAWING SHEET SIZE = A1

SCALE: 1:100

LSWH - EN31 - EAR - DPL - AEC - 00343

REVISION: A01

SUITABILITY: S2

FR [for review] STATUS