

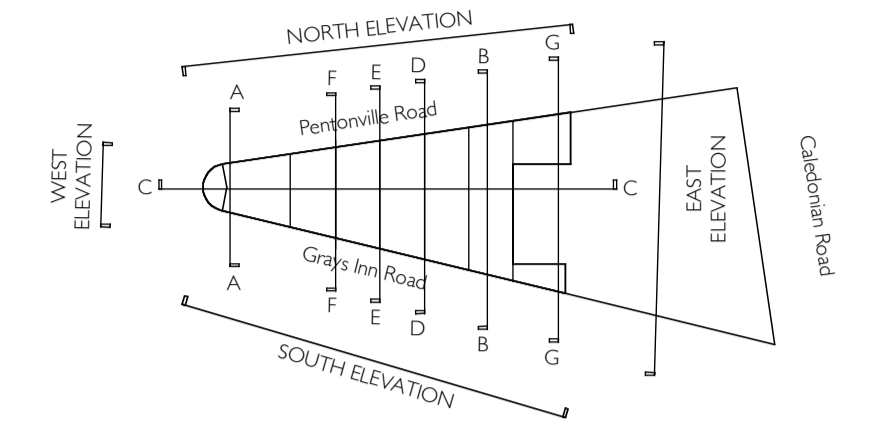
* NOTE:
Levels quoted are related to the OS bench mark detailed in the bottom right hand corner of the Micheal Gallie survey drawings (value 17.48m).
High accuracy static GPS carried out in June 2011 was used to orientate the drawings to the OS grid.
The GPS heights were found to be 50mm higher than the bench mark related levels.
This was verified using spirit levelling between the bench mark and new control stations.

GENERAL NOTES

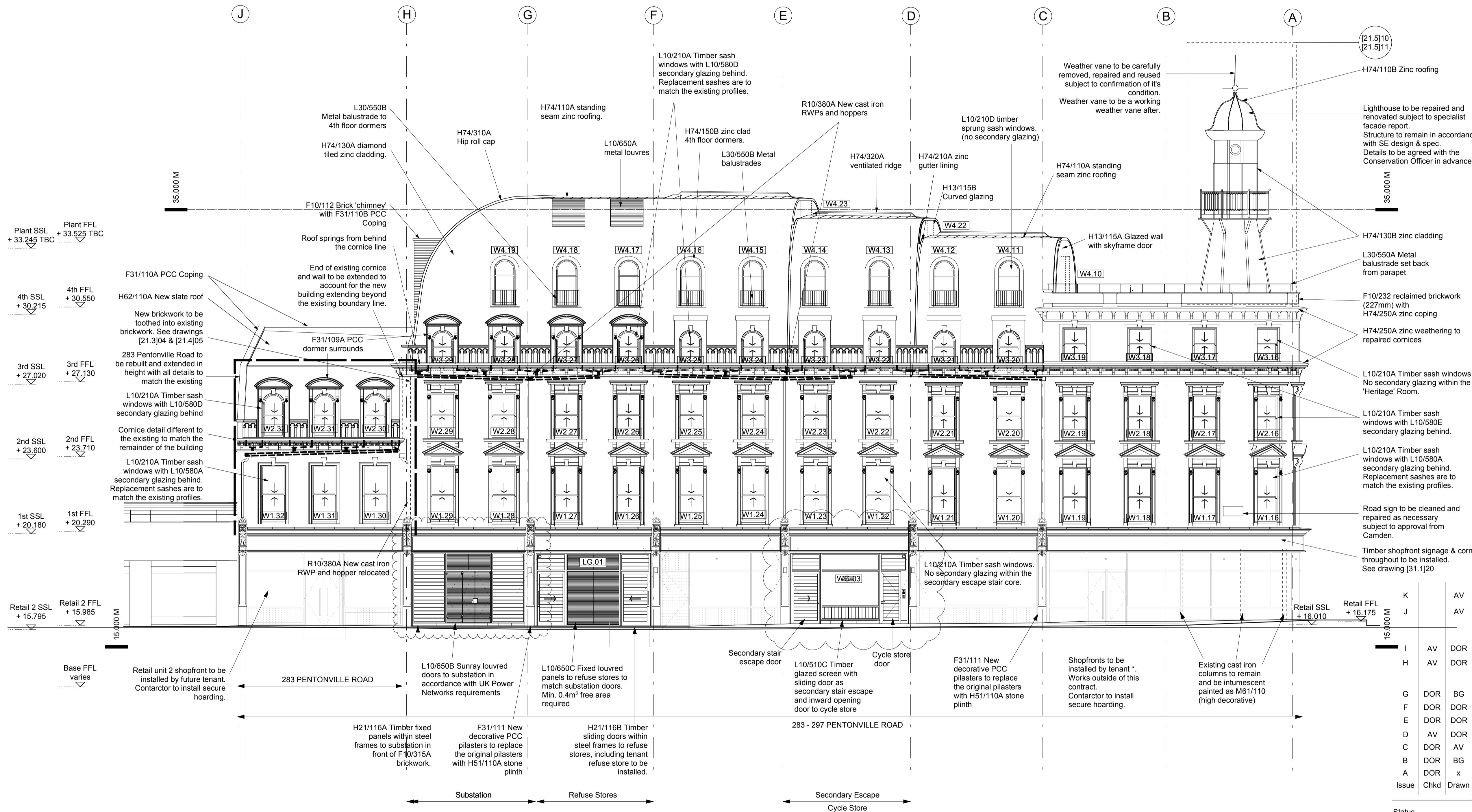
Drawing to be read in conjunction with all information by architects, structural engineer & service consultants.

The contractor is not to scale from this drawing. All written dimensions to be checked on site before work commences. Discrepancies, where identified, must be reported to the architect immediately.

This drawing is the property of Latitude Architects and Designers and must not be reproduced or disclosed to any unauthorised person either wholly or in part without written consent.



* Shopfronts to be installed by a future tenant in accordance with the relevant planning permission



Issue	Chkd	Drawn	Date	Description
K		AV	24/03/2015	Substation Shopfront updated.
J		AV	28/11/2014	CCTV locations added, 4th floor windows amended. Cornice and Shopfronts updated. Roof louvres reinstated.
I		AV	16/02/2014	Issued to discharge planning condition
H		AV	07/10/2013	Construction Issue. Upstands & detail added to shop fronts. Dormer & new window positions relocated.
G		DOR	18/05/2012	Notes amended
F		DOR	19/12/2011	4th floor terrace balustrade revised
E		DOR	09/12/2011	Notes amended
D		AV	25/11/2011	Issued for tender
C		DOR	13/10/2011	Updated for revised planning application
B		DOR	23/09/2011	Issued for costing
A		DOR	09/03/2011	Preliminary issue

Status	Job No.	Drwg No.	Issue
CONSTRUCTION	0706	[15.2]02	K

Drawing Scale 1:100@A1 Scale 1:200@A3
PROPOSED NORTH ELEVATION
PENTONVILLE ROAD
 Project
THE LIGHTHOUSE BLOCK
LONDON WC1X