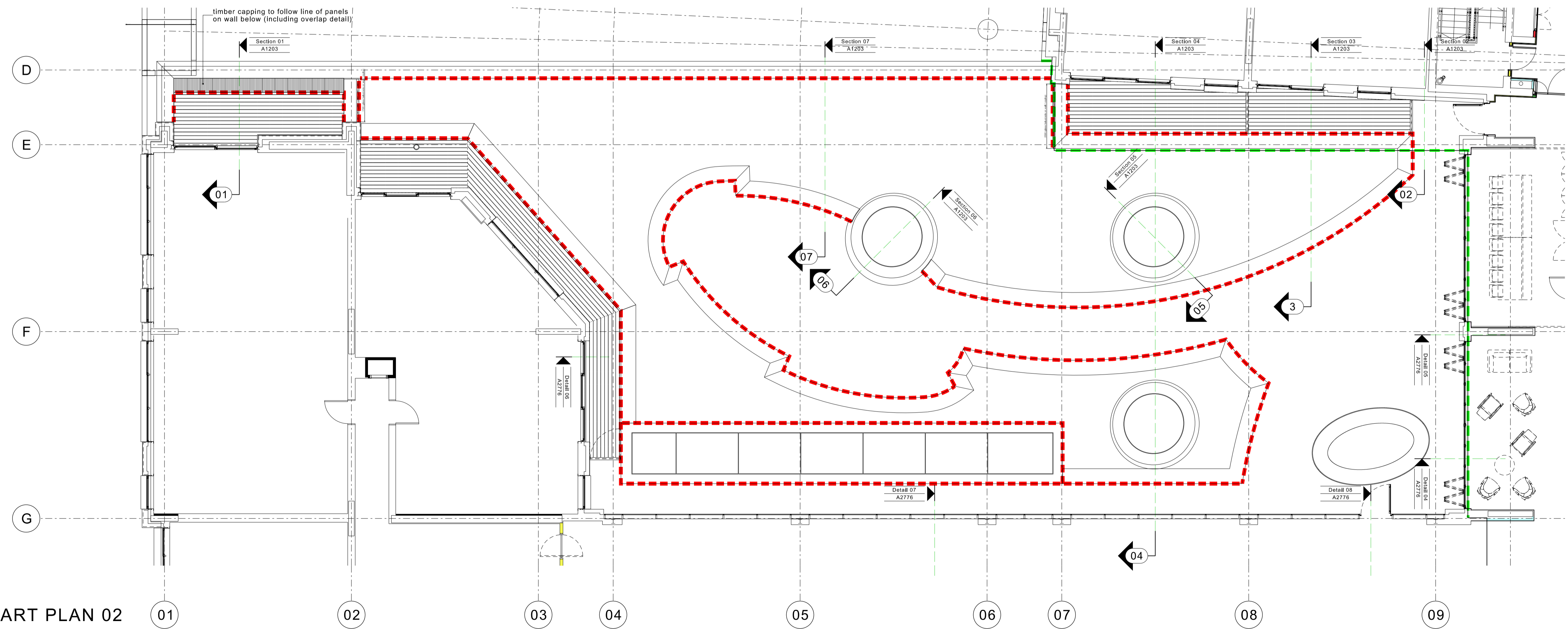


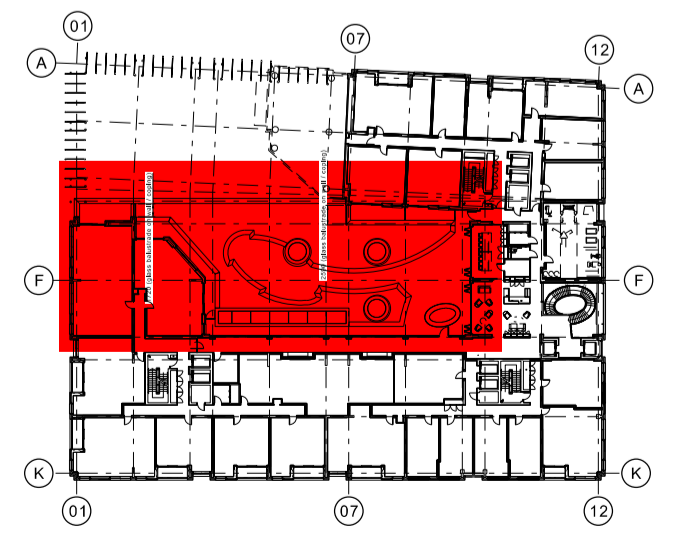
KEY	
	Natural Stone Paving, Flame Textured Granite colour - Dark Grey 50mm thick, 600mm wide x RL (600-900mm) laid Stretcher bond on pedestal system.
	Natural Stone Coping, colour - Dark Grey 100mm thick, 600mm wide Curved, varying length. (Specialist to confirm)
	Hardwood Decking - Iroko, Iro (OE)A 120mm wide x 20mm thick, naturally weathered.
	Soft Landscaped Area to specialist subcontractor design
	Course gravel bed to provide maintenance strip
	Centreline, powder coated galvanised tubular steel benches (wall mounted) by 'www.benchmark Ltd.co.uk' Colour - RAL 6014 (Yellow Olive)
	Water feature / water bowl (Specialist design) Stone / Iroko stone weathered finish, Colour - Natural 1800mm diameter / 450mm high UV filtered recirculation from below ground reservoir to achieve continuously overflow & reflective surface.
	Circular rooflights with metal (RAL 7008) enclosure & perimeter flashing - see LMS detailed scope.
	Linear rooflights with metal (RAL 7008) perimeter flashing. Vertical hardwood facing to sides - see LMS for scope.
	Vertical hardwood facing, pre-weathered (batten & board) with 'Flexi LED continuous strip recessed footlights.
	Movement Joint to Specialist details (Refer to Structural Engineer, RUK's report)
	Proposed levels

NOTE:
All materials to be strictly installed in accordance with manufacturer's recommendations.
Refer to CCL samples sign off for details of all products approved.

PART PLAN 01



PART PLAN 02



Rev	Drawn	Date	Comment
1	AJA	23.07.14	Section references added, ISSUED FOR CONSTRUCTION.
2	TA	16.02.15	Updated to reflect client changes / CCL instructions
3	TA	05.03.15	privacy screen added to terrace between apts as client design change.