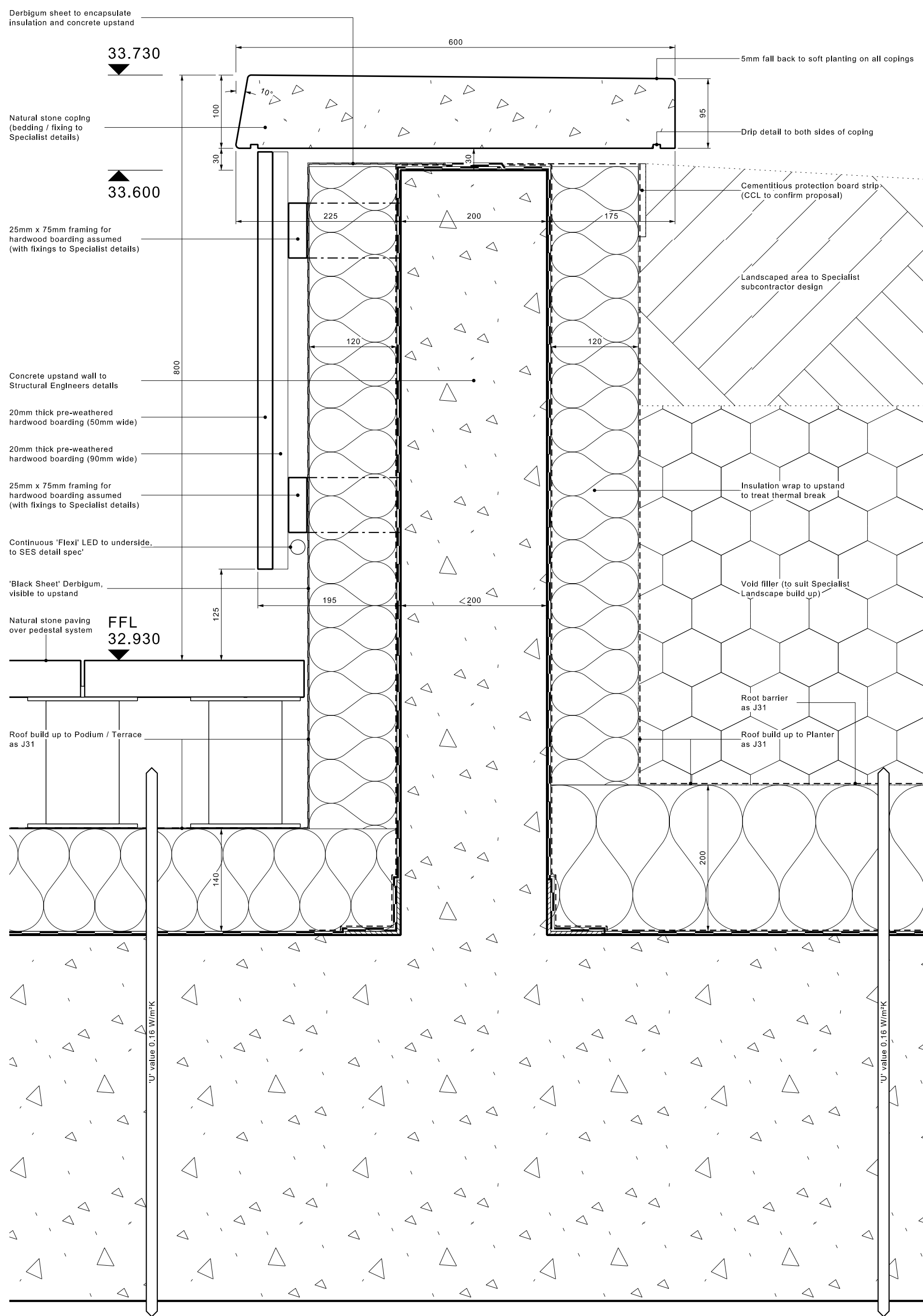
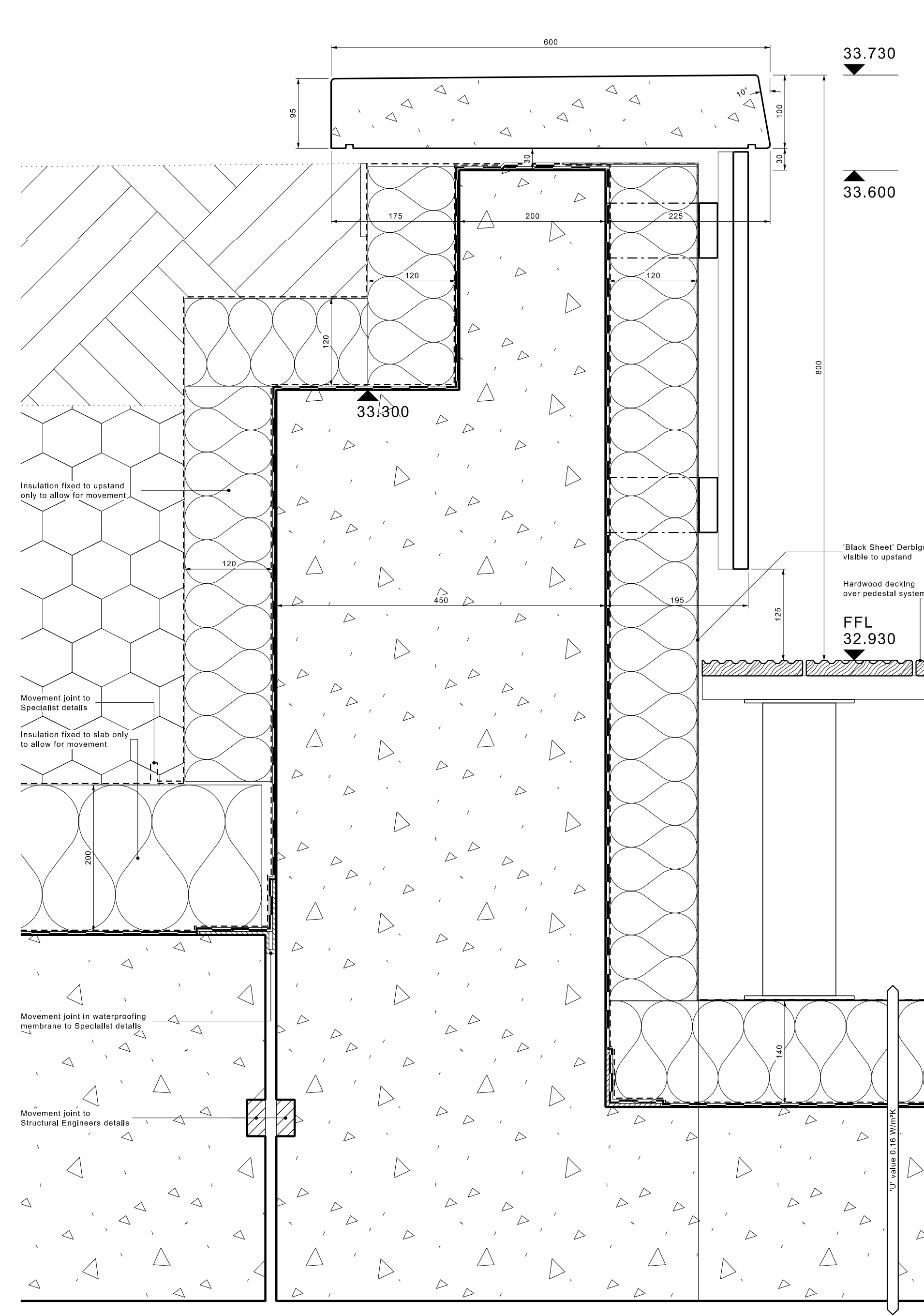


Note:- All detail notes as detail 01

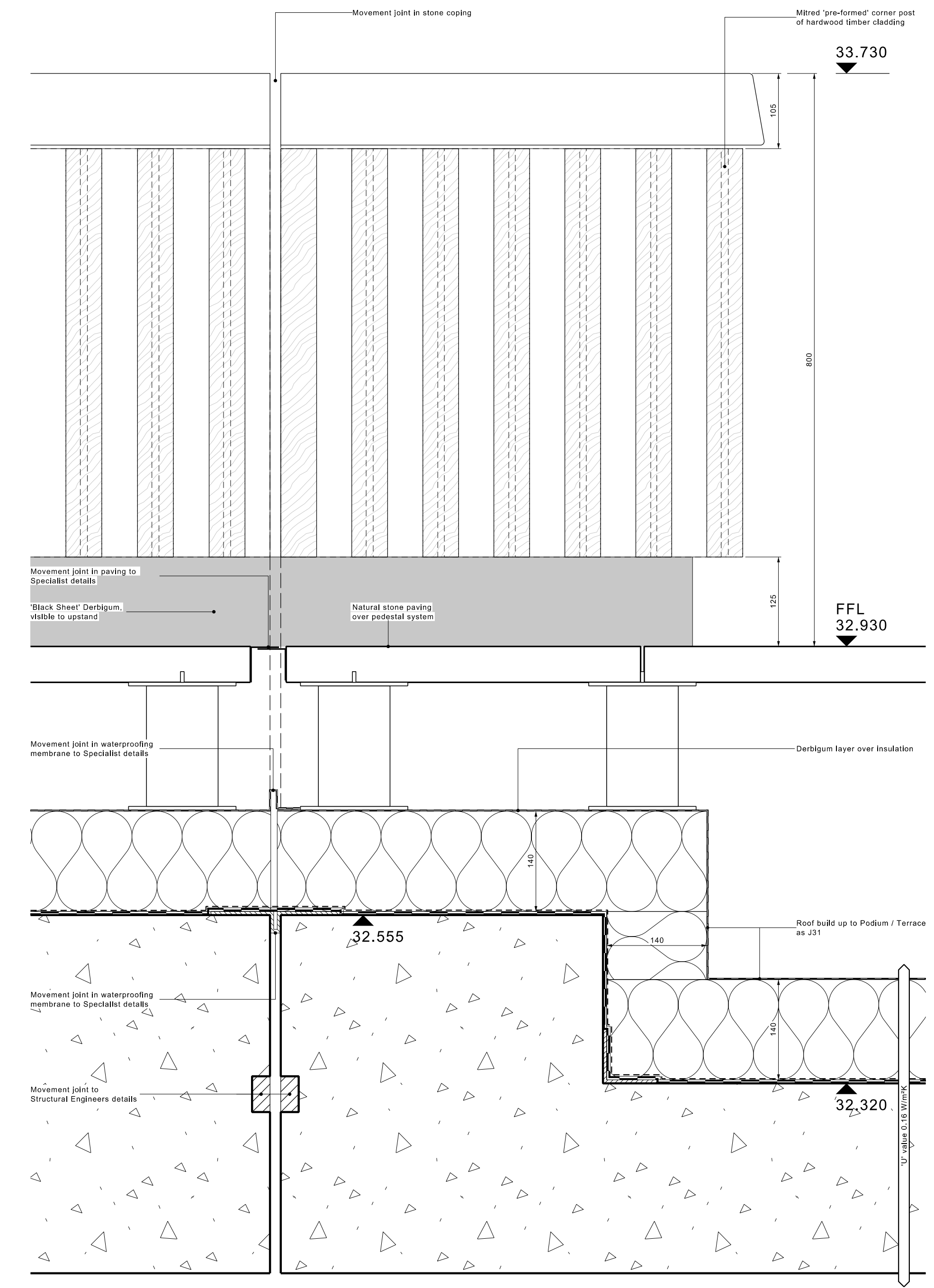
Note:- Refer to Alumasc J31 NBS (with WA J31). All interfaces to be as per Alumasc standard details by approved installer.



DETAIL 01



DETAIL 02



DETAIL 03

Note: Refer to extract plan detail for Movement joint proposal in substrate and finishes.

Rev	Drawn	Date	Comment
1	TA	14.07.14	ISSUED FOR CONSTRUCTION

