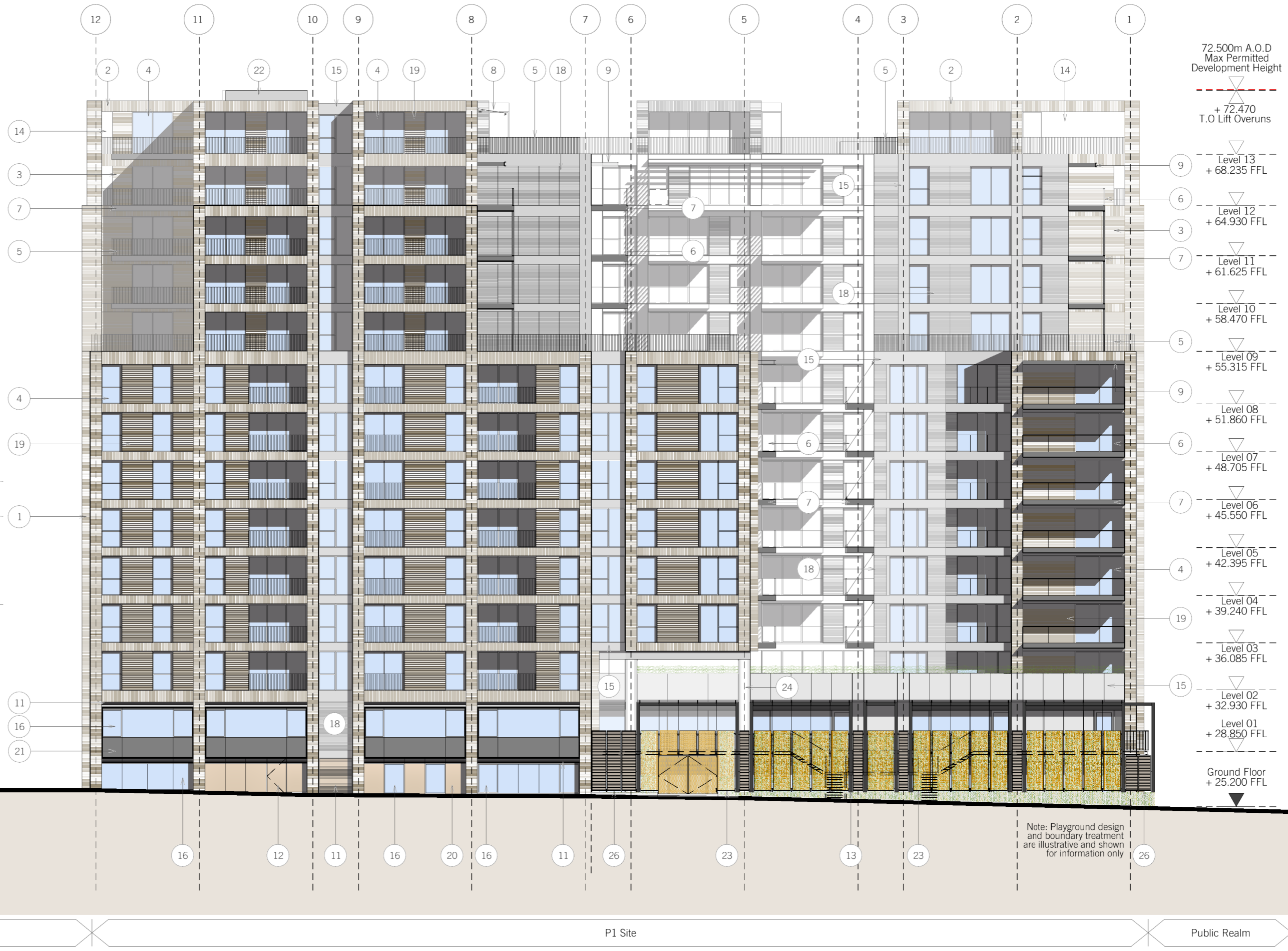
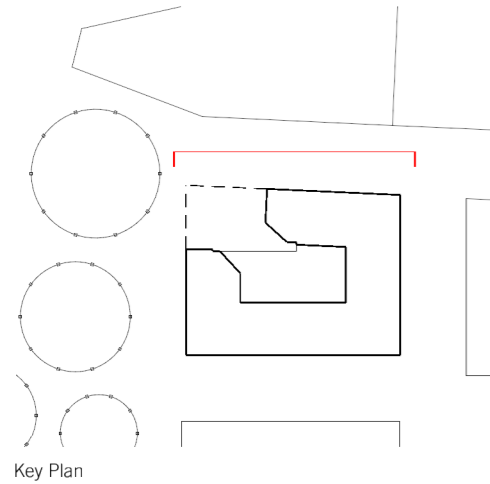


Material Key

1. Grey/Red/Blue Coloured Brick - Pier
2. Grey/Red/Blue Coloured Brick - Beam
3. Grey/Red/Blue Coloured Brick - Panel
4. Dark Grey Aluminum Framed Window / Door
5. Metal Balustrade/Bronze Coloured Metal Handrail
6. Glass Infill Balustrade/Bronze Handrail
7. PPC Aluminum Edging to Balcony Structure
8. Retractable Fabric Awning - Grey
9. Brise Soleil - PPC Aluminum
10. Indicative Planted Screen
11. Anodised Aluminum Louvre Panel - Bronze
12. Anodised Aluminum Door - Bronze
13. Steel Portal Frame Enclosure To Fencing
14. Opening Within Facade
15. White Reconstituted Stone Panel
16. Aluminum Curtain-Wall Glazing
17. Dark Grey PPC Security Shutter
18. White Reconstituted Stone Textured Panel
19. Textured Grey/Brown/Blue Brick Panel
20. Anodised Aluminum Metal Panel - Bronze
21. Opaque Glass Panel
22. Lift Overrun
23. Permeable Fence Enclosure
24. White Reconstituted Stone Column
25. Glazed Roof light
26. Timber Louvred Panel



1 West - Canal Reach

[Elevation]



Revisions: 1 - Planning amendment revisions	Notes:	DAVID MORLEY ARCHITECTS 18 Hatton Place London EC1N 8RU Tel: 020 7430 2444 Fax: 020 7430 2443 davidmorleyarchitects.co.uk	P1- Kings Cross West Elevation	Job no: 476	Drawing no: 1-143	Revision: 1
				Scale: 1:250	Date: 15.06.12	Revised: 05.02.15

© Do not scale off drawing. Check all dimensions on site and advise any discrepancies before commencing work. All dimensions in millimetres unless otherwise noted.