

Material Key

1. Grey/Red/Blue Coloured Brick - Pier
2. Grey/Red/Blue Coloured Brick - Beam
3. Grey/Red/Blue Coloured Brick - Panel
4. Dark Grey Aluminum Framed Window / Door
5. Metal Balustrade/Bronze Coloured Metal Handrail
6. Glass Infill Balustrade/Bronze Handrail
7. PPC Aluminum Edging to Balcony Structure
8. Aluminum Retractable External Venetian Blind
9. Brise Soleil - PPC Aluminum
10. Indicative Planted Screen
11. Anodised Aluminum Louvre Panel - Bronze
12. Anodised Aluminum Door - Bronze
13. Steel Portal Frame Enclosure To Fencing
14. Opening Within Facade
15. White Reconstituted Stone Panel
16. Aluminum Curtain-Wall Glazing
17. Dark Grey PPC Security Shutter
18. White Reconstituted Stone/Textured Panel
19. Textured Grey/Brown/Blue Brick Panel
20. Anodised Aluminum Metal Panel - Bronze
21. Opaque Glass Panel
22. Lift Overrun
23. Permeable Fence Enclosure
24. White Reconstituted Stone Column
25. Glazed Roof light
26. Timber Louvred Panel

72.500m A.O.D
Max Permitted
Development Height

+ 72.470
T.O Lift Overruns

Level 13
+ 68.235 FFL

Level 12
+ 64.930 FFL

Level 11
+ 61.625 FFL

Level 10
+ 58.470 FFL

Level 09
+ 55.315 FFL

Level 08
+ 51.860 FFL

Level 07
+ 48.705 FFL

Level 06
+ 45.550 FFL

Level 05
+ 42.395 FFL

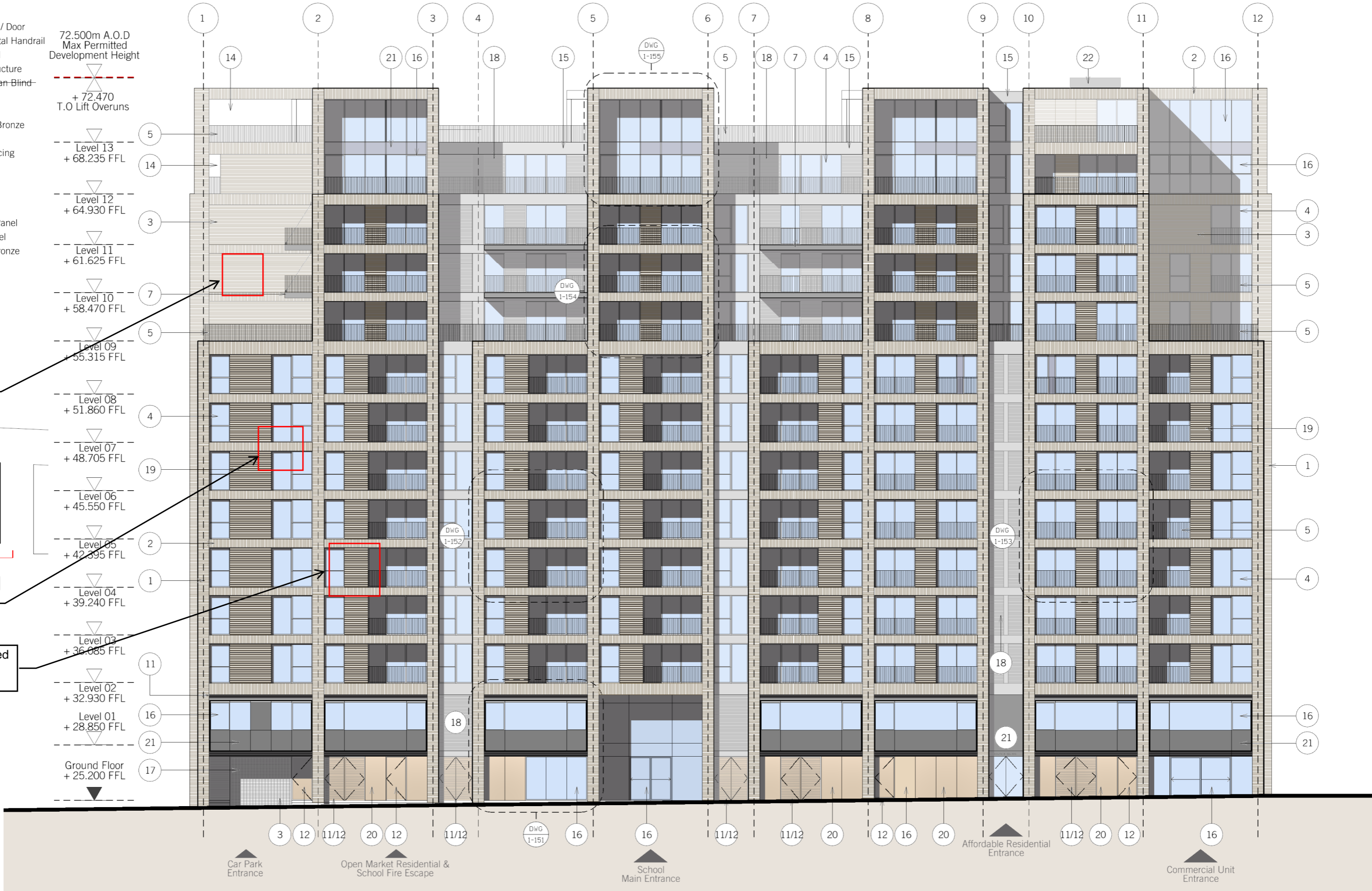
Level 04
+ 39.240 FFL

Level 03
+ 36.085 FFL

Level 02
+ 32.930 FFL

Level 01
+ 28.850 FFL

Ground Floor
+ 25.200 FFL



Typical flush
brick panels and
spandrels.

Typical brick
spandrel and
feature stepped
brick panels.

Typical stepped
feature
brick
panel

Key Plan

1 East - Holder Street

[Elevation]

0m 5m

Revisions: H - Planning amendment revisions

Notes:

DAVID MORLEY ARCHITECTS
18 Hatton Place London EC1N 8RU
Tel: 020 7430 2444 Fax: 020 7430 2443
davidmorleyarchitects.co.uk

P1- Kings Cross
East Elevation

Job no: 476	Drawing no: 1-141	Revision: H
Scale: 1:250	Date: 15.06.12	Revised: 21.11.14

© Do not scale off drawing. Check all dimensions on site and advise any discrepancies before commencing work. All dimensions in millimetres unless otherwise noted.