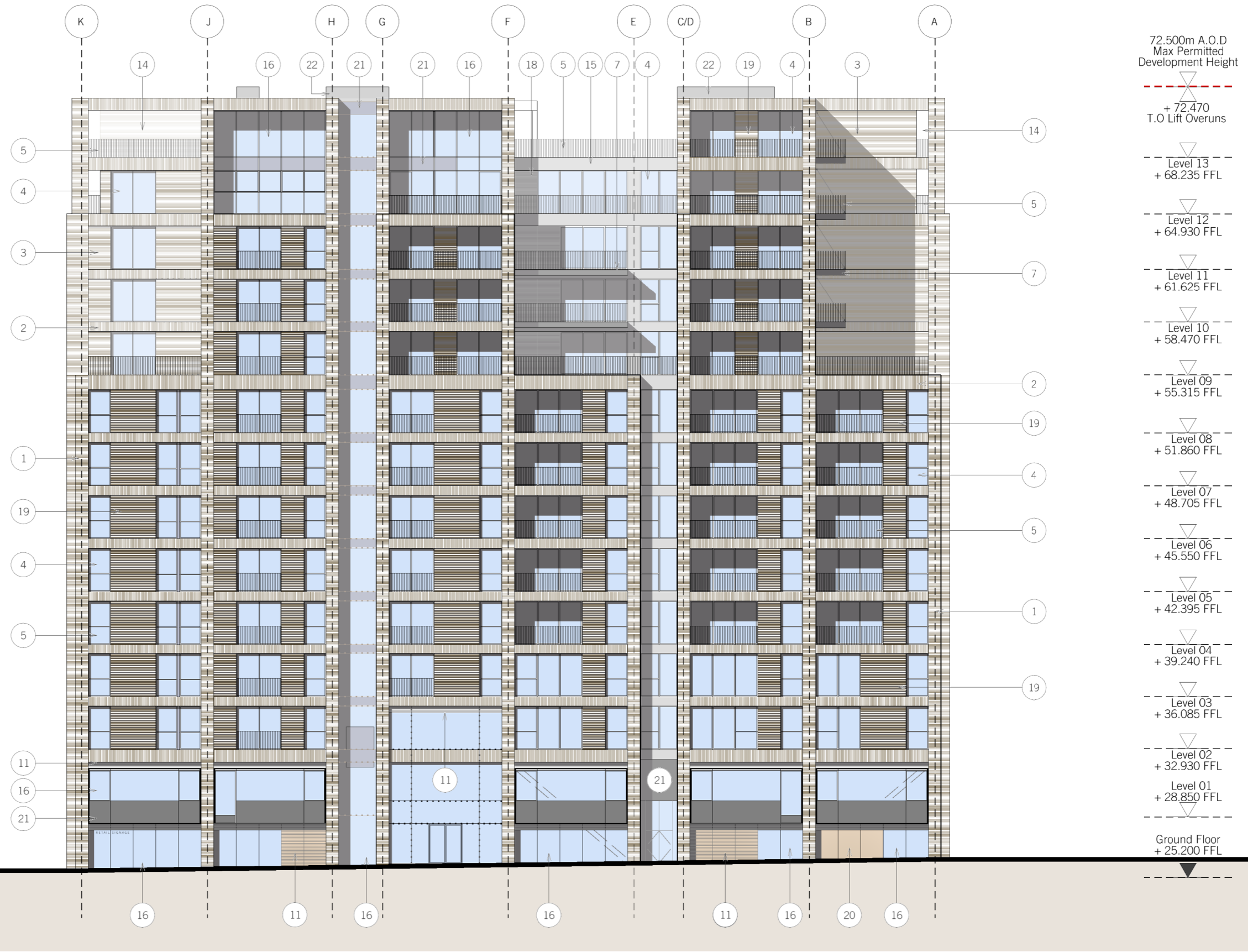
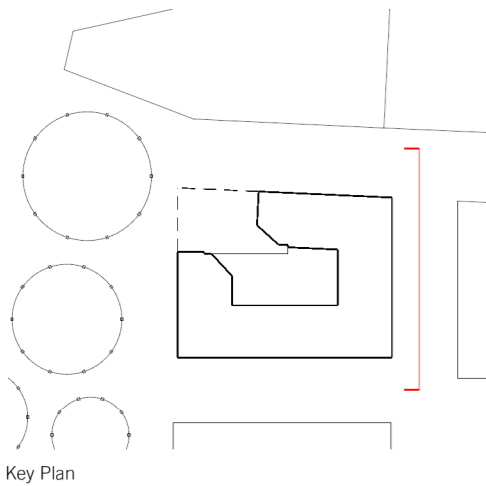


Material Key

1. Grey/Red/Blue Coloured Brick - Pier
2. Grey/Red/Blue Coloured Brick - Beam
3. Grey/Red/Blue Coloured Brick - Panel
4. Dark Grey Aluminum Framed Window / Door
5. Metal Balustrade/Bronze Coloured Metal Handra
6. Glass Infill Balustrade/Bronze Handrail
7. PPC Aluminum Edging to Balcony Structure
8. Aluminum Retractable External Venetian Blind-
9. Brise Soleil - PPC Aluminum
10. Indicative Planted Screen
11. Anodised Aluminum Louvre Panel - Bronze
12. Anodised Aluminum Door - Bronze
13. Steel Portal Frame Enclosure To Fencing
14. Opening Within Facade
15. White Reconstituted Stone Panel
16. Aluminum Curtain-Wall Glazing
17. Dark Grey PPC Security Shutter
18. White Reconstituted StoneTextured Panel
19. Textured Grey/Brown/Blue Brick Panel
20. Anodised Aluminum Metal Panel - Bronze
21. Opaque Glass Panel
22. Lift Overrun
23. Permeable Fence Enclosure
24. White Reconstituted Stone Column
25. Glazed Roof light
26. Timber Louvred Panel



72.500m A.O.D  
Max Permitted  
Development Height

+ 72.470  
T.O Lift Overruns

Level 13  
+ 68.235 FFL

Level 12  
+ 64.930 FFL

Level 11  
+ 61.625 FFL

Level 10  
+ 58.470 FFL

Level 09  
+ 55.315 FFL

Level 08  
+ 51.860 FFL

Level 07  
+ 48.705 FFL

Level 06  
+ 45.550 FFL

Level 05  
+ 42.395 FFL

Level 04  
+ 39.240 FFL

Level 03  
+ 36.085 FFL

Level 02  
+ 32.930 FFL

Level 01  
+ 28.850 FFL

Ground Floor  
+ 25.200 FFL

1 North - Handyside Street

[Elevation]



Revisions: H - Planning amendment revisions	Notes:	DAVID MORLEY ARCHITECTS 18 Hatton Place London EC1N 8RU Tel: 020 7430 2444 Fax: 020 7430 2443 davidmorleyarchitects.co.uk	P1- Kings Cross North Elevation	Job no: 476	Drawing no: 1-140	Revision: H
				Scale: 1:250	Date: 15.06.12	Revised: 21.11.14

© Do not scale off drawing. Check all dimensions on site and advise any discrepancies before commencing work. All dimensions in millimetres unless otherwise noted.