
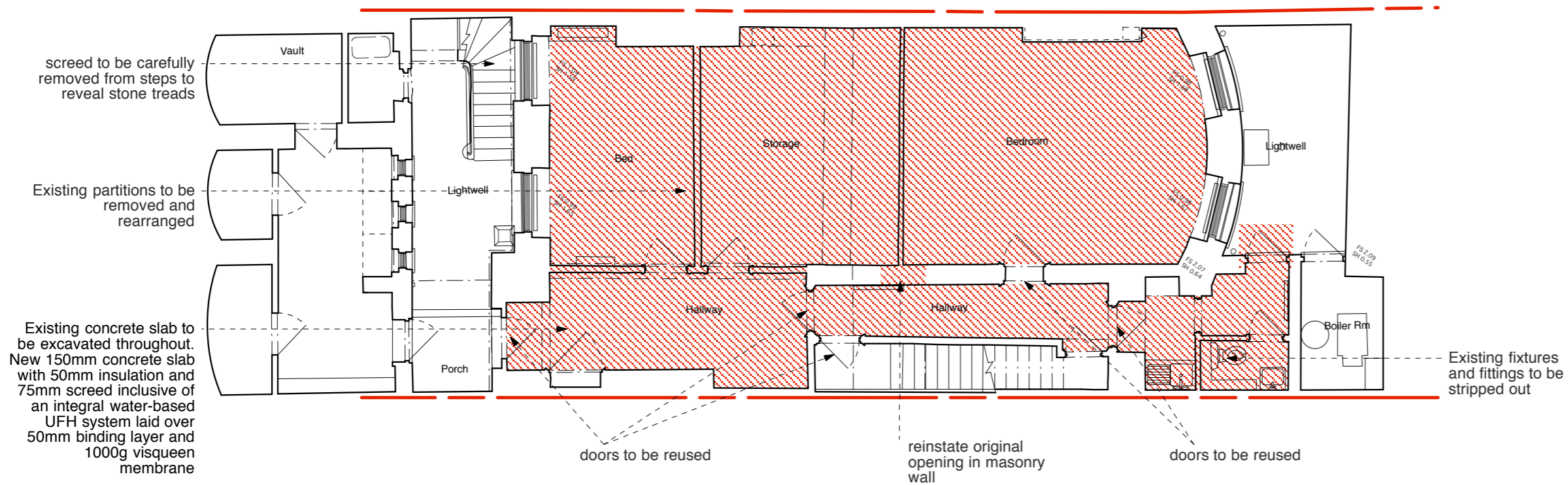


General Notes
 Do not scale from this drawing
 All dimensions to be verified on site
 To be read in conjunction with all relevant documents
 In the event of discrepancy notify the Architect immediately
 This document is copyright of Hugh Cullum Architects Ltd

Issue Status
 SK Information F Feasibility D Design
 P Permissions S Scheme T Tender
 C Construction E Existing Condition

 Demolished



(_): Issued for Planning (27.03.15/AL)
 Revision: Information (date/drawn by)

Demolition Plan - Basement

HUGH CULLUM ARCHITECTS LTD
 Bloomsbury Design
 61b Judd Street
 London WC1H 9QT
 t 020 7383 7647
 f 020 7387 7645
 mail@hughcullum.com

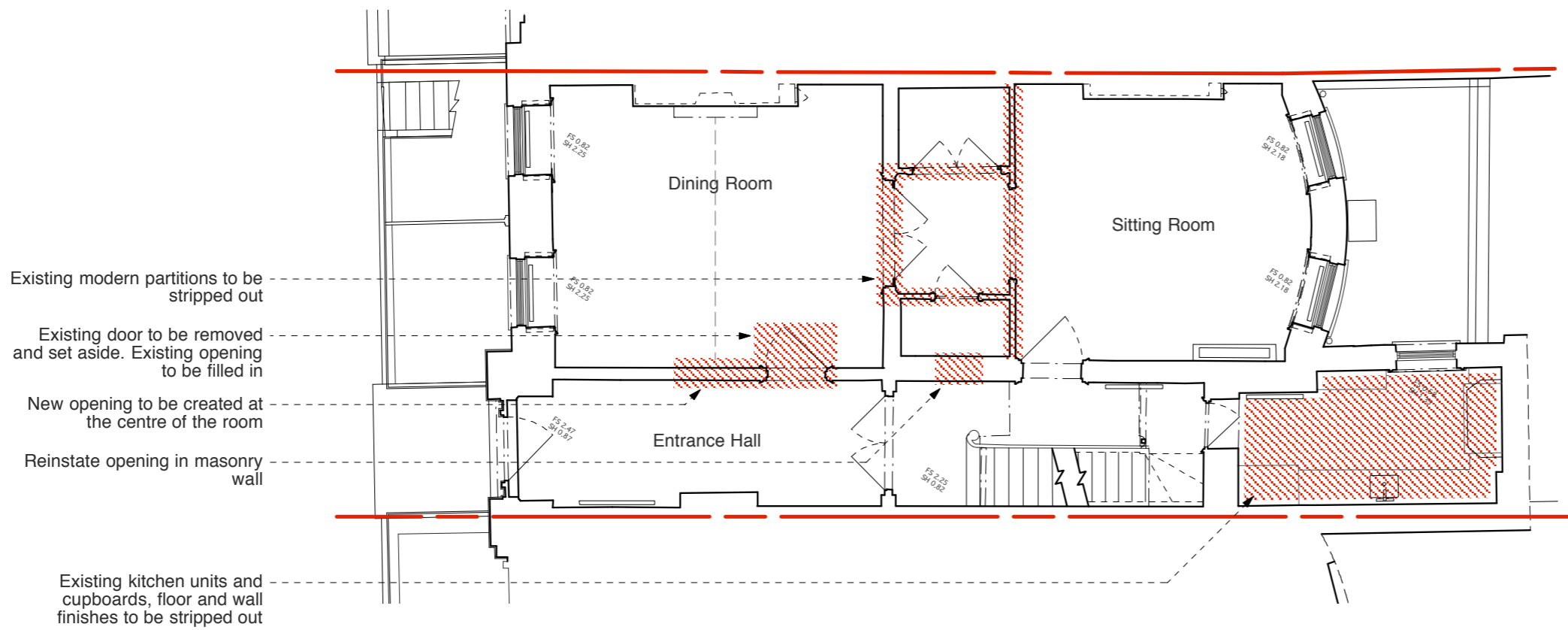
8 Fitzroy Square
 Proposed - Demolition
 Basement Plan
 1:100@A3 February 2015
FSQ08-P101(_)

General Notes
 Do not scale from this drawing
 All dimensions to be verified on site
 To be read in conjunction with all relevant documents
 In the event of discrepancy notify the Architect immediately
 This document is copyright of Hugh Cullum Architects Ltd

Issue Status
 SK Information F Feasibility D Design
 P Permissions S Scheme T Tender
 C Construction E Existing Condition



Demolished



(_): Issued for Planning (27.03.15/AL)
 Revision: Information (date/drawn by)

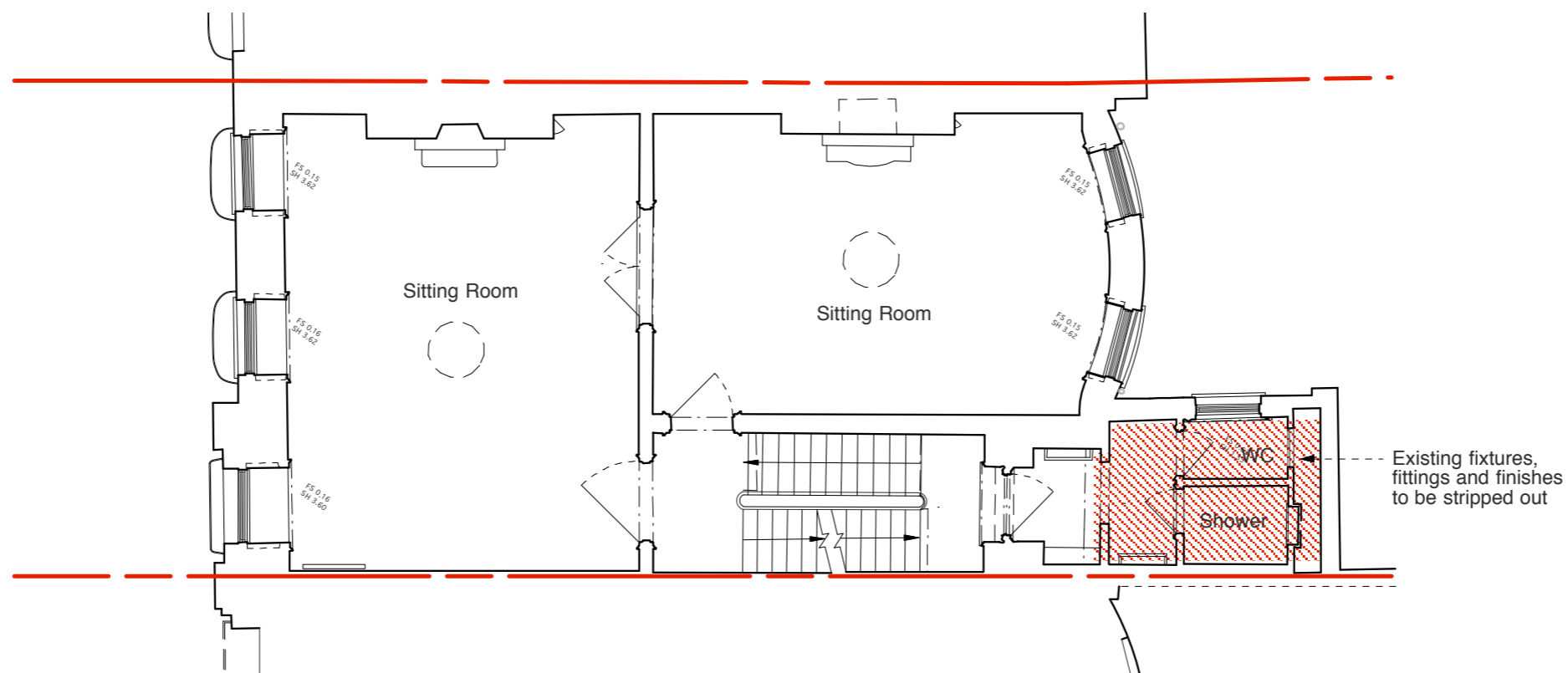


Demolition Plan - Ground Floor

HUGH CULLUM 8 Fitzroy Square
 ARCHITECTS LTD
 Bloomsbury Design
 61b Judd Street
 London WC1H 9QT
 t 020 7383 7647
 f 020 7387 7645
 mail@hughcullum.com

Proposed - Demolition
 Ground Floor Plan
 1:100@A3 February 2015
FSQ08-P102(_)

Demolition Plan - First Floor



General Notes
 Do not scale from this drawing
 All dimensions to be verified on site
 To be read in conjunction with all relevant documents
 In the event of discrepancy notify the Architect immediately
 This document is copyright of Hugh Cullum Architects Ltd

Issue Status
 SK Information F Feasibility D Design
 P Permissions S Scheme T Tender
 C Construction E Existing Condition

 Demolished

Existing fixtures, fittings and finishes to be stripped out



(_): Issued for Planning (27.03.15/AL)
 Revision: Information (date/drawn by)

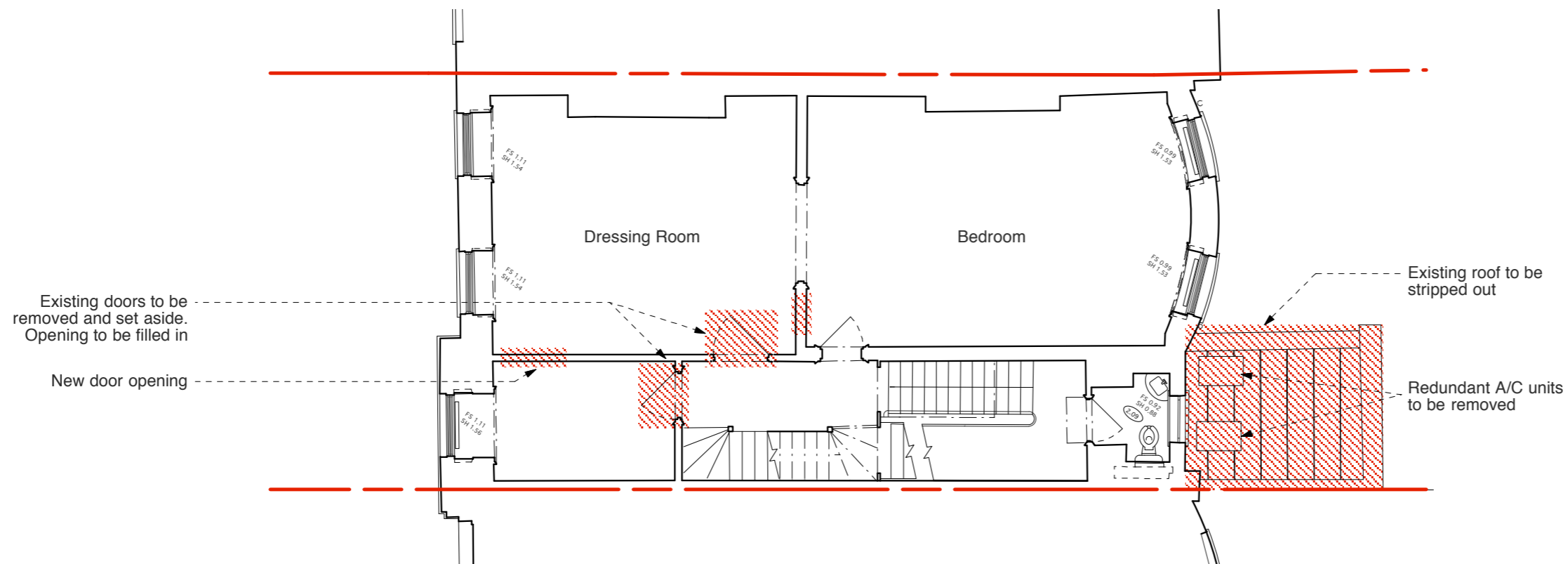
HUGH CULLUM ARCHITECTS LTD
 Bloomsbury Design
 61b Judd Street
 London WC1H 9QT
 t 020 7383 7647
 f 020 7387 7645
 mail@hughcullum.com

8 Fitzroy Square
 Proposed - Demolition
 First Floor Plan
 1:100@A3 February 2015
FSQ08-P103(_)

General Notes
 Do not scale from this drawing
 All dimensions to be verified on site
 To be read in conjunction with all relevant documents
 In the event of discrepancy notify the Architect immediately
 This document is copyright of Hugh Cullum Architects Ltd

Issue Status
 SK Information F Feasibility D Design
 P Permissions S Scheme T Tender
 C Construction E Existing Condition

 Demolished



(): Issued for Planning (27.03.15/AL)
 Revision: Information (date/drawn by)

Demolition Plan - Second Floor

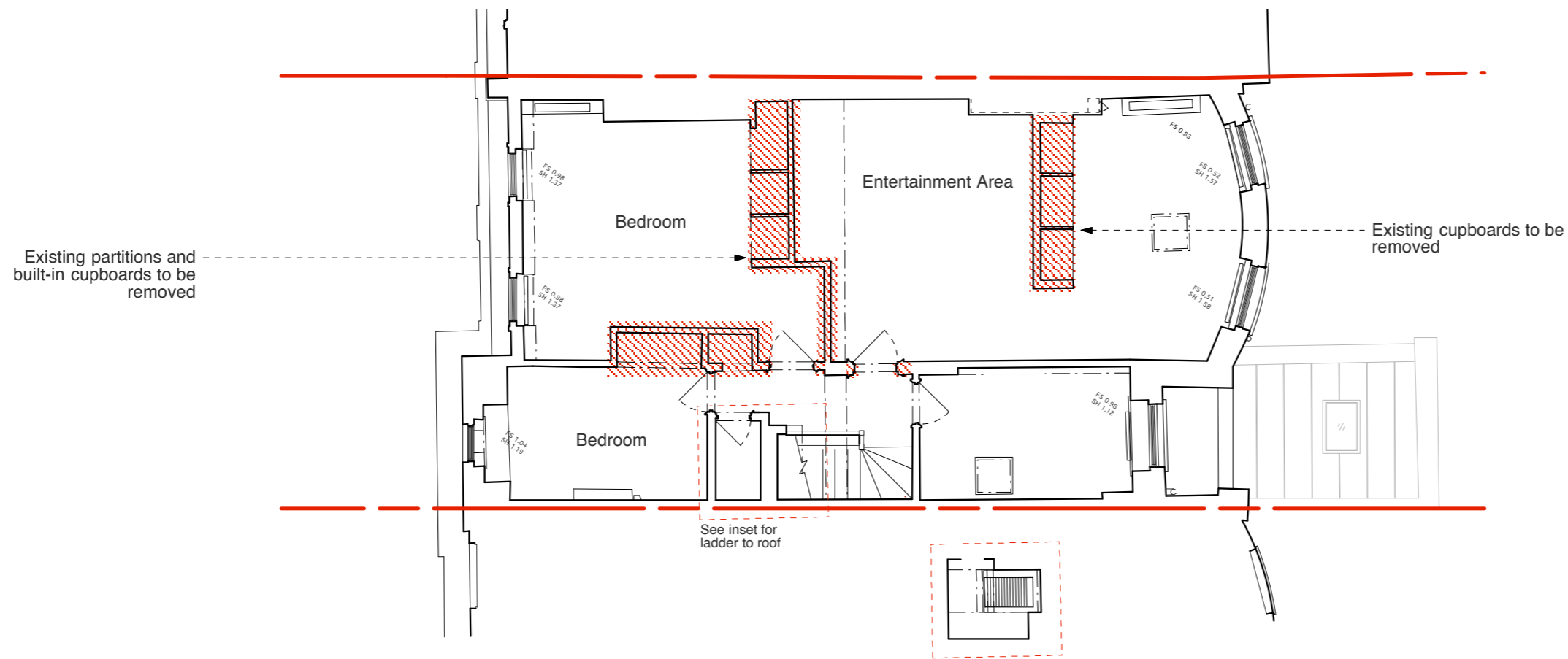
HUGH CULLUM 8 Fitzroy Square
 ARCHITECTS LTD
 Bloomsbury Design
 61b Judd Street
 London WC1H 9QT
 t 020 7383 7647
 f 020 7387 7645
 mail@hughcullum.com

Proposed - Demolition
 Second Floor Plan
 1:100@A3 February 2015
FSQ08-P104()

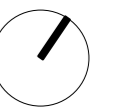
General Notes
 Do not scale from this drawing
 All dimensions to be verified on site
 To be read in conjunction with all relevant documents
 In the event of discrepancy notify the Architect immediately
 This document is copyright of Hugh Cullum Architects Ltd

Issue Status
 SK Information F Feasibility D Design
 P Permissions S Scheme T Tender
 C Construction E Existing Condition

 Demolished



(_): Issued for Planning (27.03.15/AL)
 Revision: Information (date/drawn by)



Demolition Plan - Third Floor

HUGH CULLUM 8 Fitzroy Square
 ARCHITECTS LTD
 Bloomsbury Design
 61b Judd Street
 London WC1H 9QT
 t 020 7383 7647
 f 020 7387 7645
 mail@hughcullum.com

Proposed - Demolition
 Third Floor Plan
 1:100@A3 February 2015

FSQ08-P105(_)