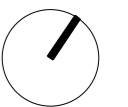
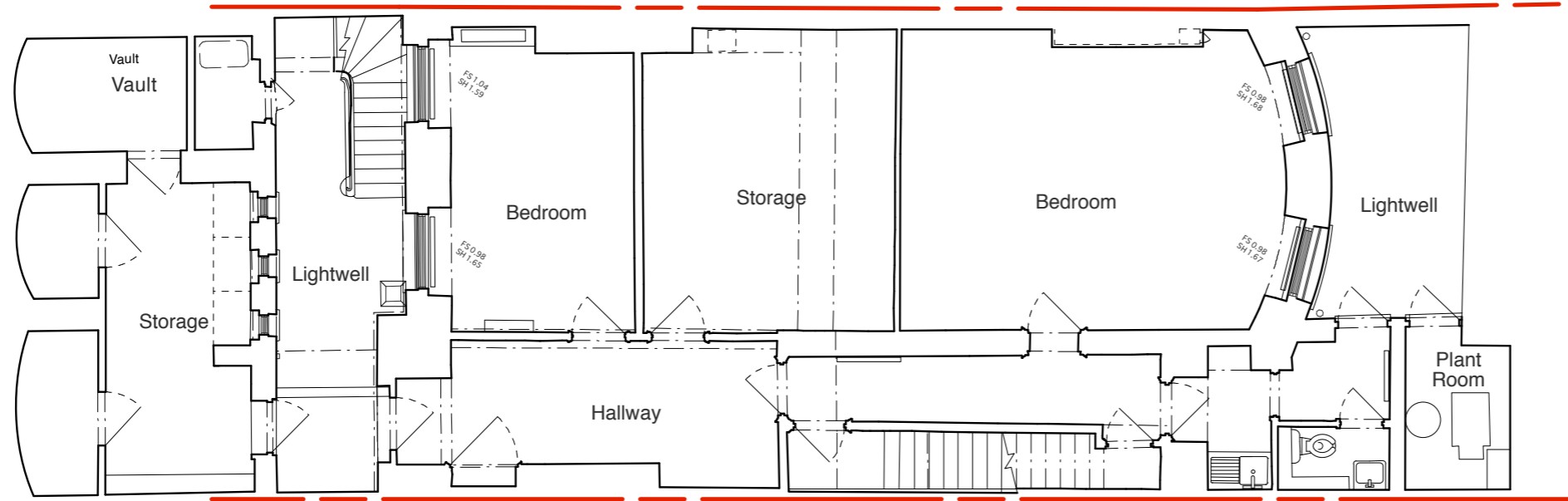


General Notes
 Do not scale from this drawing
 All dimensions to be verified on site
 To be read in conjunction with all relevant documents
 In the event of discrepancy notify the Architect immediately
 This document is copyright of Hugh Cullum Architects Ltd

Issue Status
 SK Information F Feasibility D Design
 P Permissions S Scheme T Tender
 C Construction E Existing Condition



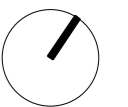
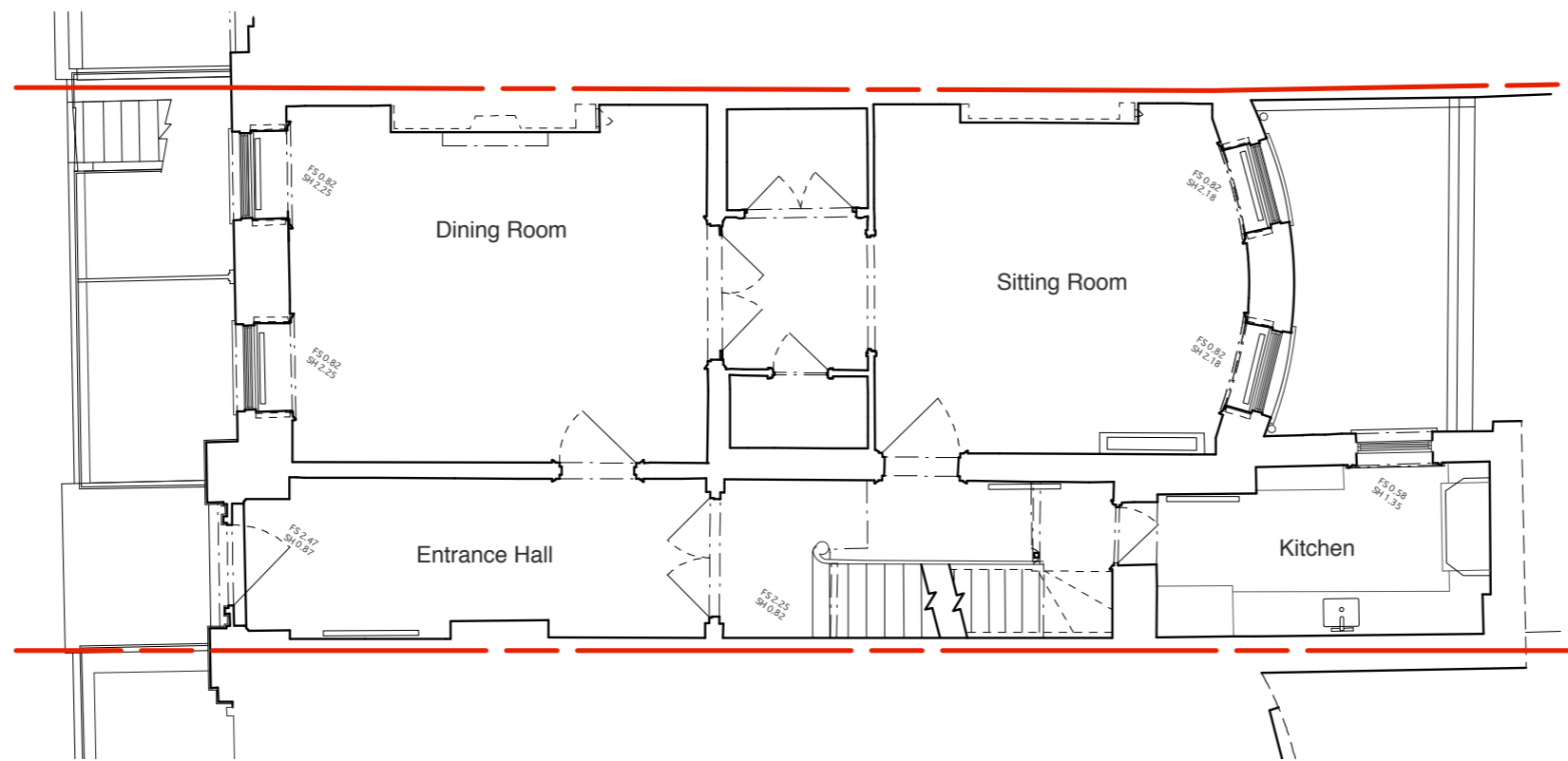
(_): Issued for Planning (27.03.15/SE)
 Revision: Information (date/drawn by)

As Existing Basement Plan

HUGH CULLUM 8 Fitzroy Square
 ARCHITECTS LTD
 Bloomsbury Design As Existing
 61b Judd Street Basement Plan
 London WC1H 9QT 1:100@A3 March 2015
 t 020 7383 7647
 f 020 7387 7645
 mail@hughcullum.com **FSQ08-E001(_)**

General Notes
 Do not scale from this drawing
 All dimensions to be verified on site
 To be read in conjunction with all relevant documents
 In the event of discrepancy notify the Architect immediately
 This document is copyright of Hugh Cullum Architects Ltd

Issue Status
 SK Information F Feasibility D Design
 P Permissions S Scheme T Tender
 C Construction E Existing Condition



(_): Issued for Planning (27.03.15/SE)
 Revision: Information (date/drawn by)

As Existing Ground Floor Plan

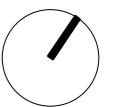
HUGH CULLUM 8 Fitzroy Square
 ARCHITECTS LTD
 Bloomsbury Design As Existing
 61b Judd Street Ground Floor Plan
 London WC1H 9QT 1:100@A3 March 2015
 t 020 7383 7647
 f 020 7387 7645
 mail@hughcullum.com **FSQ08-E002(_)**

General Notes
 Do not scale from this drawing
 All dimensions to be verified on site
 To be read in conjunction with all relevant documents
 In the event of discrepancy notify the Architect immediately
 This document is copyright of Hugh Cullum Architects Ltd

Issue Status
 SK Information F Feasibility D Design
 P Permissions S Scheme T Tender
 C Construction E Existing Condition



(_): Issued for Planning (27.03.15/SE)
 Revision: Information (date/drawn by)

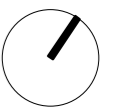
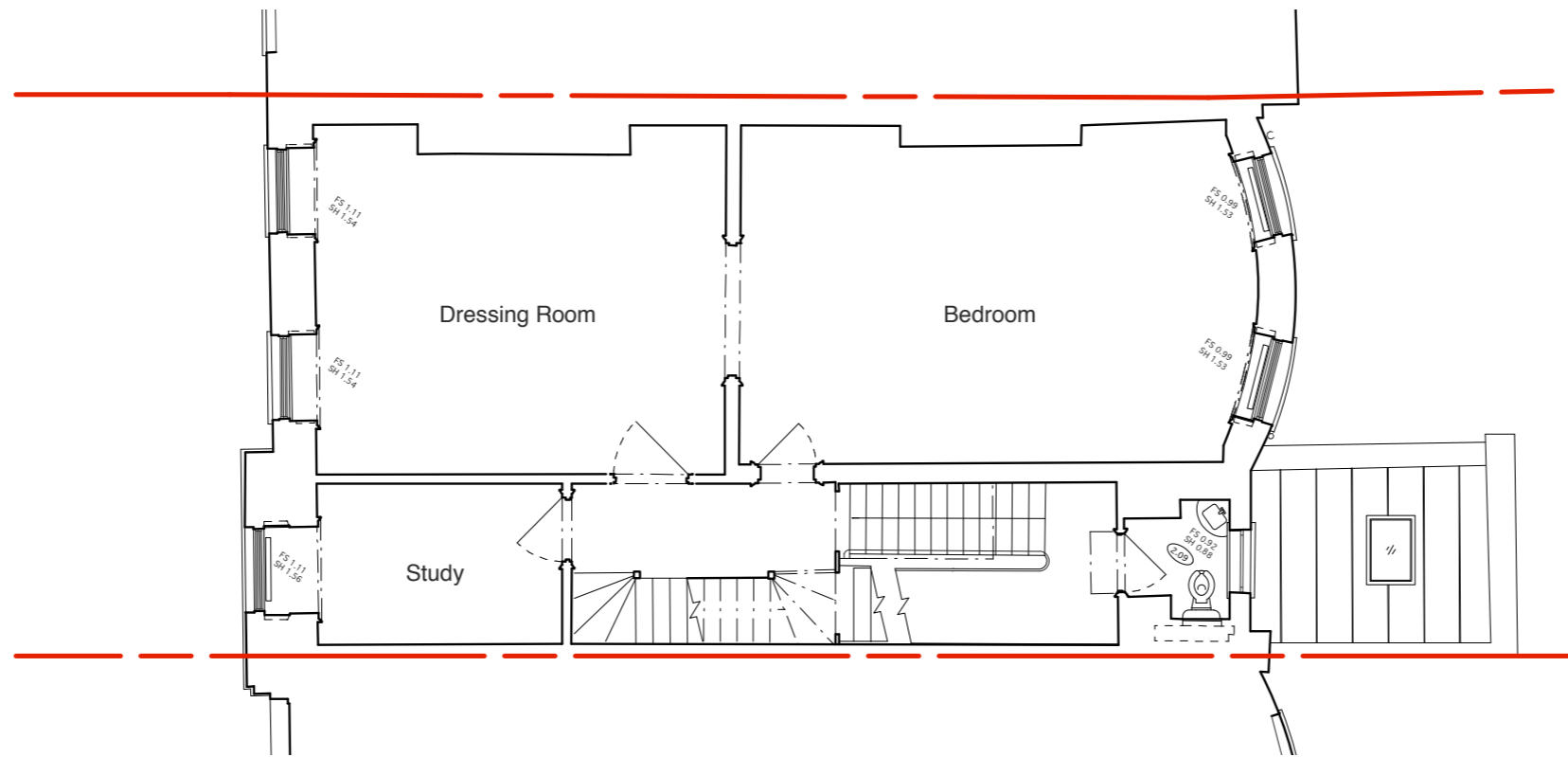


As Existing First Floor Plan

HUGH CULLUM 8 Fitzroy Square
 ARCHITECTS LTD
 Bloomsbury Design As Existing
 61b Judd Street First Floor Plan
 London WC1H 9QT 1:100@A3 March 2015
 t 020 7383 7647
 f 020 7387 7645
 mail@hughcullum.com **FSQ08-E003(_)**

General Notes
 Do not scale from this drawing
 All dimensions to be verified on site
 To be read in conjunction with all relevant documents
 In the event of discrepancy notify the Architect immediately
 This document is copyright of Hugh Cullum Architects Ltd

Issue Status
 SK Information F Feasibility D Design
 P Permissions S Scheme T Tender
 C Construction E Existing Condition



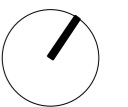
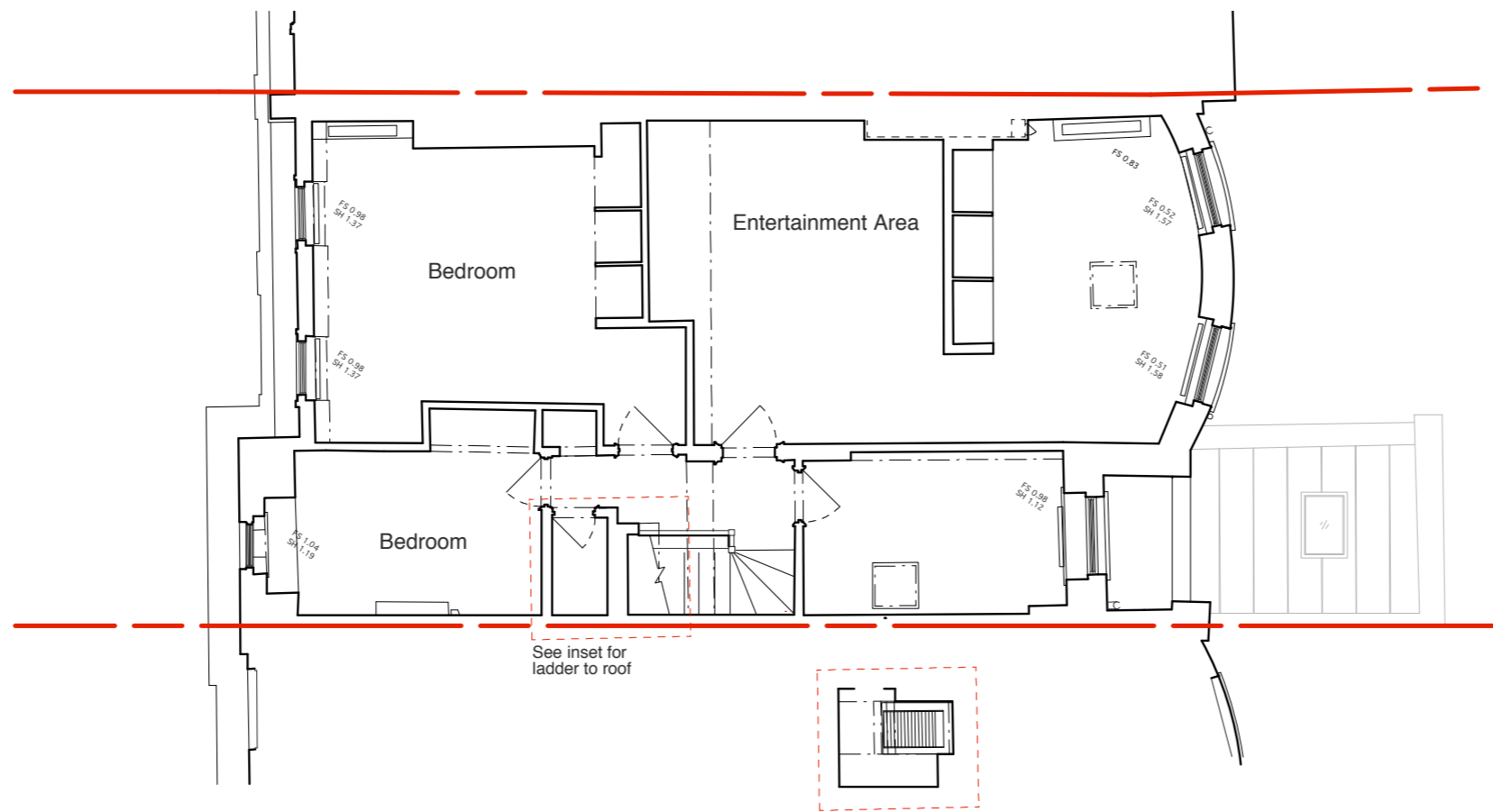
(): Issued for Planning (27.03.15/SE)
 Revision: Information (date/drawn by)

As Existing Second Floor Plan

HUGH CULLUM 8 Fitzroy Square
 ARCHITECTS LTD
 Bloomsbury Design As Existing
 61b Judd Street Second Floor Plan
 London WC1H 9QT 1:100@A3 March 2015
 t 020 7383 7647
 f 020 7387 7645
 mail@hughcullum.com **FSQ08-E004()**

General Notes
 Do not scale from this drawing
 All dimensions to be verified on site
 To be read in conjunction with all relevant documents
 In the event of discrepancy notify the Architect immediately
 This document is copyright of Hugh Cullum Architects Ltd

Issue Status
 SK Information F Feasibility D Design
 P Permissions S Scheme T Tender
 C Construction E Existing Condition



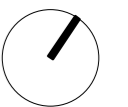
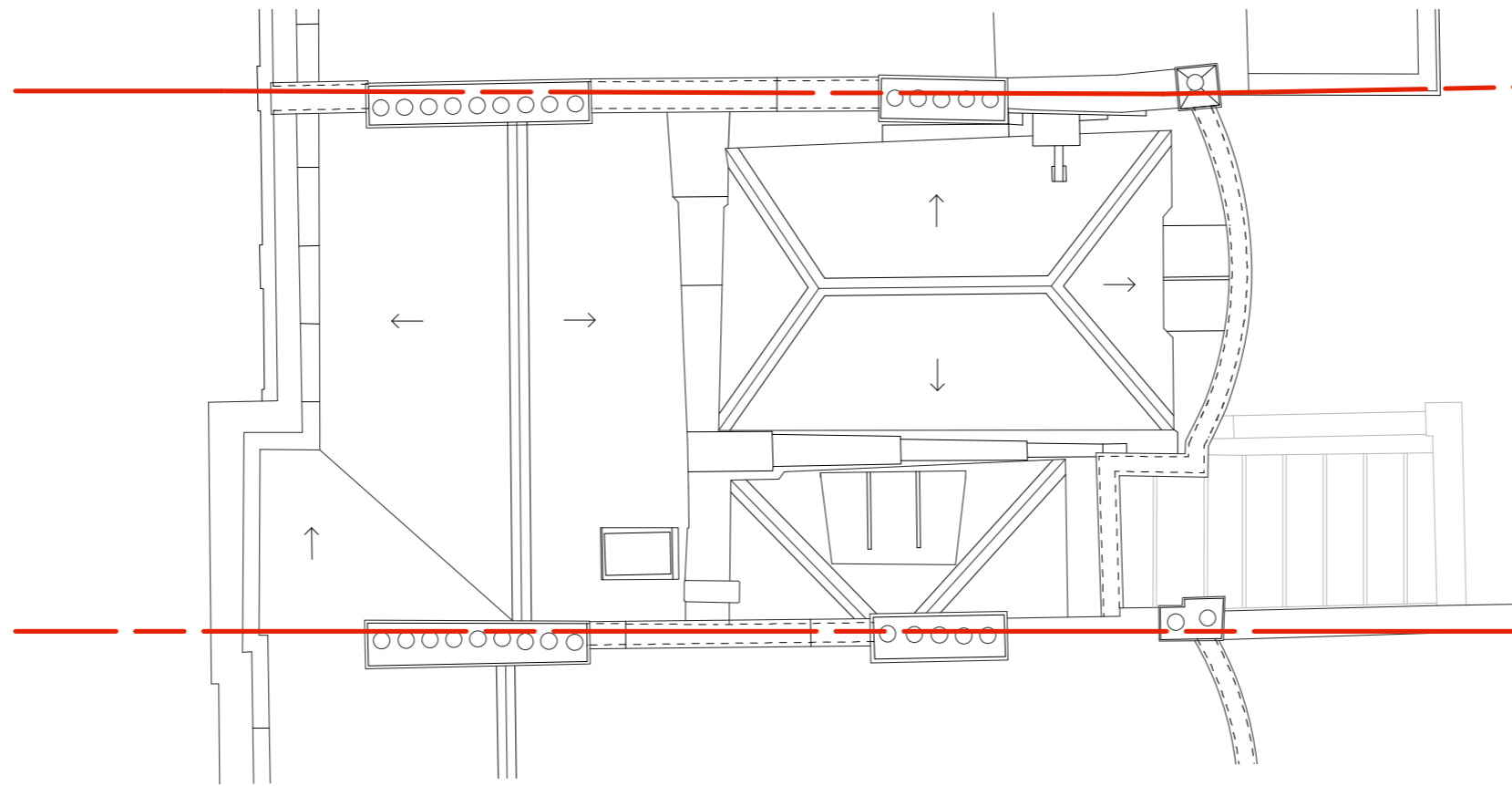
(_): Issued for Planning (27.03.15/SE)
 Revision: Information (date/drawn by)

As Existing Third Floor Plan

HUGH CULLUM 8 Fitzroy Square
 ARCHITECTS LTD
 Bloomsbury Design As Existing
 61b Judd Street Third Floor Plan
 London WC1H 9QT 1:100@A3 March 2015
 t 020 7383 7647
 f 020 7387 7645
 mail@hughcullum.com **FSQ08-E005(_)**

General Notes
 Do not scale from this drawing
 All dimensions to be verified on site
 To be read in conjunction with all relevant documents
 In the event of discrepancy notify the Architect immediately
 This document is copyright of Hugh Cullum Architects Ltd

Issue Status
 SK Information F Feasibility D Design
 P Permissions S Scheme T Tender
 C Construction E Existing Condition



(_) : Issued for Planning (27.03.15/SE)
 Revision: Information (date/drawn by)

As Existing Roof Plan

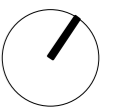
HUGH CULLUM 8 Fitzroy Square
 ARCHITECTS LTD
 Bloomsbury Design As Existing
 61b Judd Street Roof Plan
 London WC1H 9QT 1:100@A3 March 2015
 t 020 7383 7647
 f 020 7387 7645
 mail@hughcullum.com **FSQ08-E006(_)**



As Existing Front Elevation

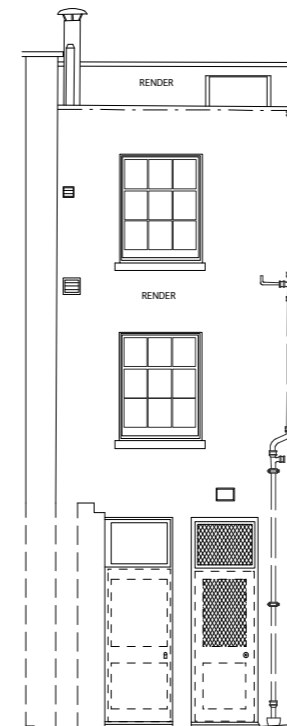
General Notes
 Do not scale from this drawing
 All dimensions to be verified on site
 To be read in conjunction with all relevant documents
 In the event of discrepancy notify the Architect immediately
 This document is copyright of Hugh Cullum Architects Ltd

Issue Status
 SK Information F Feasibility D Design
 P Permissions S Scheme T Tender
 C Construction E Existing Condition



(_) : Issued for Planning (27.03.15/SE)
 Revision: Information (date/drawn by)

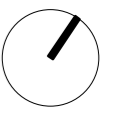
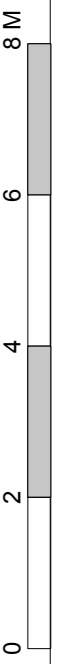
HUGH CULLUM 8 Fitzroy Square
 ARCHITECTS LTD
 Bloomsbury Design As Existing
 61b Judd Street Front Elevation
 London WC1H 9QT 1:100@A3 March 2015
 t 020 7383 7647
 f 020 7387 7645
 mail@hughcullum.com **FSQ08-E007(_)**



As Existing Rear Elevation

General Notes
 Do not scale from this drawing
 All dimensions to be verified on site
 To be read in conjunction with all relevant documents
 In the event of discrepancy notify the Architect immediately
 This document is copyright of Hugh Cullum Architects Ltd

Issue Status
 SK Information F Feasibility D Design
 P Permissions S Scheme T Tender
 C Construction E Existing Condition



(_): Issued for Planning (27.03.15/SE)
 Revision: Information (date/drawn by)

HUGH CULLUM ARCHITECTS LTD 8 Fitzroy Square
 Bloomsbury Design As Existing
 61b Judd Street Rear and Side Elevation
 London WC1H 9QT 1:100@A3 March 2015
 t 020 7383 7647
 f 020 7387 7645
 mail@hughcullum.com **FSQ08-E008(_)**