

ARTICLE FOUR DIRECTION

LONDON BOROUGH OF CAMDEN

TOWN AND COUNTRY PLANNING ACT 1990

**TOWN AND COUNTRY PLANNING
(GENERAL PERMITTED DEVELOPMENT) ORDER 1995 (AS AMENDED)**

HAMPSTEAD CONSERVATION AREA

**Direction Under Article 4(1) of the General Permitted Development Order
1995 (as amended) Restricting Permitted Development**

1. The London Borough of Camden (“the Authority”) is the local planning authority in respect of the area of land specified in this Direction.
2. The Authority is satisfied that it is expedient that the development specified in the First Schedule of this Direction, being certain development in the Schedule 2 to the Town and Country Planning (General Permitted Development) Order 1995 (as amended) (“the Order”), should not be carried out unless permission is granted on an application to the Authority.

NOW THEREFORE the Authority in pursuance of the power conferred on them by Article 4 (1) of the Order hereby direct that the permission granted by Article 3 of the said Order shall not apply to development on the land of the description set out in the Second Schedule.

FIRST SCHEDULE

The following development comprised within Class A of Part 1 of Schedule 2 to the said Order and not being development comprised within any other Class:

(a) The enlargement, improvement or other alteration to the principal elevation of a dwelling house or a side elevation of a dwelling house which fronts a public highway or private street or other publically accessible space.

The following development comprised within Class C of Part 1 of Schedule 2 to the said Order and not being development comprised within any other Class:

(b) Any other alteration to the roof on the principal elevation of a dwelling house or a side elevation of a dwelling house which fronts a public highway or private street or other publically accessible space

The following development comprised within Class D of Part 1 of Schedule 2 to the said Order and not being development comprised within any other Class:

(c) The erection or construction of a porch outside any external door on the principal elevation of a dwelling house or a side elevation of a dwelling house which fronts a public highway or private street or other publically accessible space

The following development comprised within Class F of Part 1 of Schedule 2 to the said Order and not being development comprised within any other Class:

(d) The provision within the curtilage at the front or side of a dwelling house of a hard surface for any purpose incidental to the enjoyment of the dwelling house as such, or the replacement in whole or part of such a surface, where any part of the hard surface would front a public highway or private street or other publically accessible space

The following development comprised within Class G of Part 1 of Schedule 2 to the said Order and not being development comprised with any other Class:

(e) The Installation, alteration, replacement or demolition of a chimney, flue or soil and vent pipe on a dwellinghouse which would be visible from a public highway or private street or other publically accessible space

The following development comprised within Class A of Part 2 of Schedule 2 to the said Order and not being development comprised within any other Class:

(f) The erection, construction, maintenance, improvement or alteration of a gate, fence, wall or other means of enclosure at the front or side of a dwelling house or flat where any part of the means of enclosure would front a public highway or private street or other publically accessible space

The following development comprised within Class B of Part 2 of Schedule 2 to the said Order and not being development comprised within any other Class:

(g) The formation, laying out and construction of a means of access to a highway which is not a trunk road or a classified road, where that access is required in connection with development permitted by any Class in this Schedule (other than by Class A of this Part).

The following development comprised within Class C of Part 2 of Schedule 2 to the said Order and not being development comprised within any other Class:

(h) The painting of the exterior of the principal elevation of a dwelling house or flat or a side elevation of a dwelling house or flat which fronts a public highway or private street or other publically accessible space, except where a dwelling house or flat was painted as at the date of this order.

The following development comprised with Class B of Part 31 of Schedule 2 to the said Order and not being development comprised within any other Class:

(i) Any building operation consisting of the demolition of a gate, fence, wall or other means of enclosure at the front or side of a dwelling house or flat where any part of the means of enclosure would front a public highway or private street or other publically accessible space

The following development comprised within Class A of Part 40 of schedule 2 to the said order and not being development comprised in any other Class:

(j) The installation, alteration or replacement of solar photovoltaics or solar thermal equipment on the roof of the principal elevation of a dwelling house or flat, or on the roof of a side elevation of a dwelling house or flat which fronts a public highway or private street or other publically accessible space

The following development comprised within Class B of Part 40 of Schedule 2 to the said order and not being development comprised in any other Class:

(k) The installation, alteration or replacement of stand alone solar at the front or side of a dwelling house or flat where any part of the stand alone solar would be visible from a public highway or private street or other publically accessible space

The following development comprised within Class C of Part 40 of schedule 2 to the said order and not being development comprised in any other Class:

(l) The installation, alteration or replacement of a flue forming part of a biomass heating system heat and power system on the principal elevation of a dwelling house or flat or a side elevation of a dwelling house or flat which fronts a public highway or private street or other publically accessible space

The following development comprised within Class F of Part 40 of Schedule 2 to the said order and not being development comprised in any other Class:

(m) The installation, alteration or replacement of a flue, forming part of a combined heat and power system, on the principal elevation of a dwelling house or flat or a side elevation of a dwelling house or flat which fronts a public highway or private street or other publically accessible space

SECOND SCHEDULE

UNIT	BuildingName	No:	Street	Town	Postcode
	Broadside		Admiral's Walk	London	NW3 6RS
	Fleet House		Admiral's Walk	London	NW3 6RS
		1	Back Lane	London	NW3 1HL
		3	Back Lane	London	NW3 1HL
		5	Back Lane	London	NW3 1HL
		7	Back Lane	London	NW3 1HL
		9	Back Lane	London	NW3 1HL
		11	Back Lane	London	NW3 1HL
		12	Back Lane	London	NW3 1HL
		13	Back Lane	London	NW3 1HL
		14	Back Lane	London	NW3 1HL
Flat Ground Floor		15	Back Lane	London	NW3 1HL
Flat 1st Floor		15	Back Lane	London	NW3 1HL
		17	Back Lane	London	NW3 1HL
		19	Back Lane	London	NW3 1HL
		21	Back Lane	London	NW3 1HL
		23	Back Lane	London	NW3 1HL
		5A	Back Lane	London	NW3 1HL
		59	Bakers Passage	London	NW3 1RH
		58A	Bakers Passage	London	NW3 1RH
		61A	Bakers Passage	London	NW3 1RH
		61B	Bakers Passage	London	NW3 1RH
		11	Birchwood Drive	London	NW3 7NB
		12	Birchwood Drive	London	NW3 7NB
		1	Boade's Mews	London	NW3 1DB
		2	Boade's Mews	London	NW3 1DB
Flat A		1	Branch Hill	London	NW3 7LT
		1	Branch Hill	London	NW3 7LT
		2	Branch Hill	London	NW3 7LT
Basement Flat		3	Branch Hill	London	NW3 7LT
		3	Branch Hill	London	NW3 7LT
		4	Branch Hill	London	NW3 7LT
Flat 2		5	Branch Hill	London	NW3 7LT
Flat 3		5	Branch Hill	London	NW3 7LT
Flat 1		5	Branch Hill	London	NW3 7LT
		6	Branch Hill	London	NW3 7LT
	Judges Walk House	7	Branch Hill	London	NW3 7LT
		17	Branch Hill		NW3 7NA
	Branch Hill House		Branch Hill	London	NW3 7LS
	Branch Hill Mews		Branch Hill	London	NW3 7LT
	Gate House		Branch Hill	London	NW3 7LS
	Holme Vale House		Branch Hill	London	NW3 7NA
	Leavesden Cottage		Branch Hill	London	NW3 7LY
Studio	Lower Lodge		Branch Hill	London	NW3 7LY
	Lower Lodge		Branch Hill	London	NW3 7LY
Maisonette 2nd and 3rd Floor	Oakhurst		Branch Hill	London	NW3 7LY

The Chestnuts	Branch Hill	London	NW3 7NA
The Cottage	Branch Hill	London	NW3 7LT
	1 Cannon Lane	London	NW3 1EL
	2 Cannon Lane	London	NW3 1EL
	4 Cannon Lane	London	NW3 1EL
	5 Cannon Lane	London	NW3 1EL
	11 Cannon Lane	London	NW3 1EL
	2 Cannon Place	London	NW3 1EJ
	3 Cannon Place	London	NW3 1EH
Flat 3rd Floor	4 Cannon Place	London	NW3 1EJ
Flat Basement And Ground Floor	4 Cannon Place	London	NW3 1EJ
Flat 1st Floor	4 Cannon Place	London	NW3 1EJ
	5 Cannon Place	London	NW3 1EH
	6 Cannon Place	London	NW3 1EJ
Flat 4	7 Cannon Place	London	NW3 1EH
Flat 2	7 Cannon Place	London	NW3 1EH
Flat 3	7 Cannon Place	London	NW3 1EH
Flat 1	7 Cannon Place	London	NW3 1EH
	8 Cannon Place	London	NW3 1EJ
	9 Cannon Place	London	NW3 1EH
	10 Cannon Place	London	NW3 1EJ
	11 Cannon Place	London	NW3 1EH
Flat Lower Ground Floor	11 Cannon Place	London	NW3 1EH
	13 Cannon Place	London	NW3 1EH
Flat Ground Floor	15 Cannon Place	London	NW3 1EH
Flat 2nd Floor	15 Cannon Place	London	NW3 1EH
Flat 1st Floor	15 Cannon Place	London	NW3 1EH
Flat 2nd Floor	17 Cannon Place	London	NW3 1EH
Flat Ground Floor	17 Cannon Place	London	NW3 1EH
Flat 1st Floor	17 Cannon Place	London	NW3 1EH
Flat A	17 Cannon Place	London	NW3 1EH
	19 Cannon Place	London	NW3 1EH
Flat D	21 Cannon Place	London	NW3 1EH
Flat A-B	21 Cannon Place	London	NW3 1EH
Flat C	21 Cannon Place	London	NW3 1EH
Flat 2nd And 3rd Floor	23 Cannon Place	London	NW3 1EH
Garden Flat	23 Cannon Place	London	NW3 1EH
Flat 1st Floor	23 Cannon Place	London	NW3 1EH
Flat Hall Floor	23 Cannon Place	London	NW3 1EH
Flat D	25 Cannon Place	London	NW3 1EH
Flat A	25 Cannon Place	London	NW3 1EH
Flat B	25 Cannon Place	London	NW3 1EH
Flat C	25 Cannon Place	London	NW3 1EH
	19A Cannon Place	London	NW3 1EH
Flat C	1 Carlingford Road	London	NW3 1RY
Flat A	1 Carlingford Road	London	NW3 1RY
Flat B	1 Carlingford Road	London	NW3 1RY
Flat B	2 Carlingford Road	London	NW3 1RX
Flat C-D	2 Carlingford Road	London	NW3 1RX
Flat E	2 Carlingford Road	London	NW3 1RX
Flat 1	3 Carlingford Road	London	NW3 1RY
Flat 2	3 Carlingford Road	London	NW3 1RY
Flat 3	3 Carlingford Road	London	NW3 1RY
	4 Carlingford Road	London	NW3 1RX

Flat A	4	Carlingford Road	London	NW3 1RX
Flat A	5	Carlingford Road	London	NW3 1RY
	5	Carlingford Road	London	NW3 1RY
	6	Carlingford Road	London	NW3 1RX
Flat 1st Floor	7	Carlingford Road	London	NW3 1RY
Flat Ground Floor	7	Carlingford Road	London	NW3 1RY
Flat 2nd And 3rd Floor	7	Carlingford Road	London	NW3 1RY
Flat Ground And 1st Floor	8	Carlingford Road	London	NW3 1RX
Flat Top Floor	8	Carlingford Road	London	NW3 1RX
Garden Flat	8	Carlingford Road	London	NW3 1RX
Flat 3	9	Carlingford Road	London	NW3 1RY
Flat 1	9	Carlingford Road	London	NW3 1RY
Flat 2	9	Carlingford Road	London	NW3 1RY
Flat 3	10	Carlingford Road	London	NW3 1RX
Flat 4	10	Carlingford Road	London	NW3 1RX
Flat 2	10	Carlingford Road	London	NW3 1RX
Flat A	10	Carlingford Road	London	NW3 1RX
Flat C	11	Carlingford Road	London	NW3 1RY
Flat B	11	Carlingford Road	London	NW3 1RY
Flat A	11	Carlingford Road	London	NW3 1RY
Flat D	12	Carlingford Road	London	NW3 1RX
Flat A	12	Carlingford Road	London	NW3 1RX
Flat B	12	Carlingford Road	London	NW3 1RX
Flat C	12	Carlingford Road	London	NW3 1RX
Flat A	13	Carlingford Road	London	NW3 1RY
	13	Carlingford Road	London	NW3 1RY
Flat C	14	Carlingford Road	London	NW3 1RX
Flat A	14	Carlingford Road	London	NW3 1RX
Flat B	14	Carlingford Road	London	NW3 1RX
Flat Lower Ground Floor	15	Carlingford Road	London	NW3 1RY
Flat 1st Floor	15	Carlingford Road	London	NW3 1RY
Flat 2nd Floor	15	Carlingford Road	London	NW3 1RY
Flat Ground Floor	15	Carlingford Road	London	NW3 1RY
Flat C	16	Carlingford Road	London	NW3 1RX
Flat A	16	Carlingford Road	London	NW3 1RX
Flat D	16	Carlingford Road	London	NW3 1RX
Flat B	16	Carlingford Road	London	NW3 1RX
	17	Carlingford Road	London	NW3 1RY
Garden Flat	18	Carlingford Road	London	NW3 1RX
Flat A	18	Carlingford Road	London	NW3 1RX
Flat B	18	Carlingford Road	London	NW3 1RX
Flat C	18	Carlingford Road	London	NW3 1RX
Flat 2nd And 3rd Floor	19	Carlingford Road	London	NW3 1RY
Flat Ground Floor	19	Carlingford Road	London	NW3 1RY
Basement Flat	19	Carlingford Road	London	NW3 1RY
Flat 1st Floor	19	Carlingford Road	London	NW3 1RY
	20	Carlingford Road	London	NW3 1RX
Flat 1st Floor	21	Carlingford Road	London	NW3 1RY
Flat 2nd And 3rd Floor	21	Carlingford Road	London	NW3 1RY
Flat A	21	Carlingford Road	London	NW3 1RY
Flat 2	22	Carlingford Road	London	NW3 1RX
Flat 4	22	Carlingford Road	London	NW3 1RX
Flat 1	22	Carlingford Road	London	NW3 1RX
Flat 3	22	Carlingford Road	London	NW3 1RX

Flat Ground Floor	23	Carlingford Road	London	NW3 1RY
Flat 1st Floor	23	Carlingford Road	London	NW3 1RY
Flat 2nd Floor	23	Carlingford Road	London	NW3 1RY
Flat A	23	Carlingford Road	London	NW3 1RY
Flat 4	24	Carlingford Road	London	NW3 1RX
Flat 1	24	Carlingford Road	London	NW3 1RX
Flat 2	24	Carlingford Road	London	NW3 1RX
Flat 3	24	Carlingford Road	London	NW3 1RX
Flat 5	24	Carlingford Road	London	NW3 1RX
Flat B	25	Carlingford Road	London	NW3 1RY
Flat A	25	Carlingford Road	London	NW3 1RY
Flat B-C	26	Carlingford Road	London	NW3 1RX
Flat D	26	Carlingford Road	London	NW3 1RX
Flat A	26	Carlingford Road	London	NW3 1RX
	27	Carlingford Road	London	NW3 1RY
Flat 1	28	Carlingford Road	London	NW3 1RX
Flat 2	28	Carlingford Road	London	NW3 1RX
Flat 3	28	Carlingford Road	London	NW3 1RX
Flat 4	28	Carlingford Road	London	NW3 1RX
Flat 1st Floor	29	Carlingford Road	London	NW3 1RY
Flat Ground Floor	29	Carlingford Road	London	NW3 1RY
Flat 2nd And 3rd Floor	29	Carlingford Road	London	NW3 1RY
Flat A	29	Carlingford Road	London	NW3 1RY
Flat 3rd Floor	30	Carlingford Road	London	NW3 1RX
Flat A	30	Carlingford Road	London	NW3 1RX
Flat 2nd Floor	30	Carlingford Road	London	NW3 1RX
Flat Ground Floor	30	Carlingford Road	London	NW3 1RX
Flat 1st Floor	30	Carlingford Road	London	NW3 1RX
Flat 1	31	Carlingford Road	London	NW3 1RY
Flat 2	31	Carlingford Road	London	NW3 1RY
Flat 3	31	Carlingford Road	London	NW3 1RY
Flat 1	32	Carlingford Road	London	NW3 1RX
Flat 2	32	Carlingford Road	London	NW3 1RX
Flat 4	32	Carlingford Road	London	NW3 1RX
Flat 3	32	Carlingford Road	London	NW3 1RX
Flat A	32	Carlingford Road	London	NW3 1RX
Flat Ground Floor	33	Carlingford Road	London	NW3 1RY
Flat 2nd Floor	33	Carlingford Road	London	NW3 1RY
Flat 1st Floor	33	Carlingford Road	London	NW3 1RY
Flat A	33	Carlingford Road	London	NW3 1RY
Flat A	34	Carlingford Road	London	NW3 1RX
Flat 2	34	Carlingford Road	London	NW3 1RX
Flat 3	34	Carlingford Road	London	NW3 1RX
Flat 4	34	Carlingford Road	London	NW3 1RX
	35	Carlingford Road	London	NW3 1RY
	2A	Carlingford Road	London	NW3 1RX
Flat A	1	Christchurch Hill	London	NW3 1JY
	1	Christchurch Hill	London	NW3 1JY
	3	Christchurch Hill	London	NW3 1JY
Flat 2nd Floor	5	Christchurch Hill	London	NW3 1JY
Flat 1st Floor	5	Christchurch Hill	London	NW3 1JY
Flat 3rd Floor	5	Christchurch Hill	London	NW3 1JY
Flat 1st And 2nd Floor	7	Christchurch Hill	London	NW3 1JY
Flat A	7	Christchurch Hill	London	NW3 1JY

	9	Christchurch Hill	London	NW3 1JY
	10	Christchurch Hill	London	NW3 1LB
	11	Christchurch Hill	London	NW3 1JY
	12	Christchurch Hill	London	NW3 1LB
	13	Christchurch Hill	London	NW3 1JY
	14	Christchurch Hill	London	NW3 1LB
	15	Christchurch Hill	London	NW3 1JY
Flat B	16	Christchurch Hill	London	NW3 1LG
Flat C	16	Christchurch Hill	London	NW3 1LG
Flat D	16	Christchurch Hill	London	NW3 1LG
Flat A	16	Christchurch Hill	London	NW3 1LG
	17	Christchurch Hill	London	NW3 1JY
	18	Christchurch Hill	London	NW3 1LG
Flat B	18	Christchurch Hill	London	NW3 1LG
	19	Christchurch Hill	London	NW3 1JY
Flat A	19	Christchurch Hill	London	NW3 1JY
	20	Christchurch Hill	London	NW3 1LG
	21	Christchurch Hill	London	NW3 1JY
	22	Christchurch Hill	London	NW3 1LG
Flat 1st 2nd And 3rd Floor	23	Christchurch Hill	London	NW3 1JY
Flat Lower Ground And Ground Floor	23	Christchurch Hill	London	NW3 1JY
	25	Christchurch Hill	London	NW3 1LA
	27	Christchurch Hill	London	NW3 1LA
	28	Christchurch Hill	London	NW3 1JL
	29	Christchurch Hill	London	NW3 1LA
	30	Christchurch Hill	London	NW3 1JL
	31	Christchurch Hill	London	NW3 1LA
Flat A	31	Christchurch Hill	London	NW3 1LA
	32	Christchurch Hill	London	NW3 1JL
	33	Christchurch Hill	London	NW3 1LA
	34	Christchurch Hill	London	NW3 1JL
	35	Christchurch Hill	London	NW3 1LA
	36	Christchurch Hill	London	NW3 1JL
	37	Christchurch Hill	London	NW3 1LA
	39	Christchurch Hill	London	NW3 1LA
Flat 6	41	Christchurch Hill		NW3 1LA
Flat Lower Ground And Ground Floor	41	Christchurch Hill	London	NW3 1LA
Flat 1	41	Christchurch Hill		NW3 1LA
Flat 2	41	Christchurch Hill		NW3 1LA
Flat 3	41	Christchurch Hill		NW3 1LA
Flat 4	41	Christchurch Hill		NW3 1LA
Flat 5	41	Christchurch Hill		NW3 1LA
	43	Christchurch Hill	London	NW3 1LA
	45	Christchurch Hill	London	NW3 1LA
	53	Christchurch Hill	London	NW3 1LG
	55	Christchurch Hill	London	NW3 1JN
Flat 1	57	Christchurch Hill	London	NW3 1JJ
Flat 5	57	Christchurch Hill	London	NW3 1JJ
Flat 6	57	Christchurch Hill	London	NW3 1JJ
Flat 7	57	Christchurch Hill	London	NW3 1JJ
Flat 8	57	Christchurch Hill	London	NW3 1JJ
Flat 2	57	Christchurch Hill	London	NW3 1JJ
Flat 3	57	Christchurch Hill	London	NW3 1JJ

Acrise Cottage

Flat 4		57	Christchurch Hill	London	NW3 1JJ
Flat 10		59	Christchurch Hill	London	NW3 1JJ
Flat 9		59	Christchurch Hill	London	NW3 1JJ
Flat 11		59	Christchurch Hill	London	NW3 1JJ
		55A	Christchurch Hill	London	NW3 1JN
	Christchurch Cottage		Christchurch		
	Christchurch		Passage	London	NW3 1JG
	Lodge		Christchurch		
			Passage	London	NW3 1JG
	Church Cottage		Christchurch		
			Passage	London	NW3 1JG
		13	Church Row	London	NW3 6UU
		14	Church Row	London	NW3 6UU
12A	Mulberry House	12A	Church Row	London	NW3 6UU
12B		12B	Church Row	London	NW3 6UT
Flat 3		13A	Church Row	London	NW3 6UU
Flat 1		13A	Church Row	London	NW3 6UU
Flat 2		13A	Church Row	London	NW3 6UU
Flat A		1	Denning Road	London	NW3 1ST
Flat B		1	Denning Road	London	NW3 1ST
		2	Denning Road	London	NW3 1SU
		3	Denning Road	London	NW3 1ST
Flat C		4	Denning Road	London	NW3 1SU
Flat A		4	Denning Road	London	NW3 1SU
Flat B		4	Denning Road	London	NW3 1SU
Flat 4		5	Denning Road	London	NW3 1ST
Flat 1		5	Denning Road	London	NW3 1ST
Flat 2		5	Denning Road	London	NW3 1ST
Flat 3		5	Denning Road	London	NW3 1ST
Flat C		6	Denning Road	London	NW3 1SU
Flat A		6	Denning Road	London	NW3 1SU
Flat B		6	Denning Road	London	NW3 1SU
Flat A		7	Denning Road	London	NW3 1ST
Flat C		7	Denning Road	London	NW3 1ST
Flat B		7	Denning Road	London	NW3 1ST
Flat D		7	Denning Road	London	NW3 1ST
Flat E		7	Denning Road	London	NW3 1ST
		8	Denning Road	London	NW3 1SU
		9	Denning Road	London	NW3 1ST
Flat A		9	Denning Road	London	NW3 1ST
Flat 1st Floor		10	Denning Road	London	NW3 1SU
Flat 2nd And 3rd Floor		10	Denning Road	London	NW3 1SU
Flat Ground Floor		10	Denning Road	London	NW3 1SU
		11	Denning Road	London	NW3 1ST
Flat A		12	Denning Road	London	NW3 1SU
Flat B		12	Denning Road	London	NW3 1SU
Flat C		12	Denning Road	London	NW3 1SU
Flat D		12	Denning Road	London	NW3 1SU
Flat C		13	Denning Road	London	NW3 1ST
Flat B		13	Denning Road	London	NW3 1ST
Flat D		13	Denning Road	London	NW3 1ST
Flat A		13	Denning Road	London	NW3 1ST
		14	Denning Road	London	NW3 1SU
Flat 1st Floor		15	Denning Road	London	NW3 1ST
Flat 2nd And 3rd Floor		15	Denning Road	London	NW3 1ST

Flat Ground Floor	15	Denning Road	London	NW3 1ST
Flat A	16	Denning Road	London	NW3 1SU
Flat B	16	Denning Road	London	NW3 1SU
Flat C	16	Denning Road	London	NW3 1SU
Basement Flat	17	Denning Road	London	NW3 1ST
Flat 4	17	Denning Road	London	NW3 1ST
Flat 2	17	Denning Road	London	NW3 1ST
Flat 1	17	Denning Road	London	NW3 1ST
Flat 3	17	Denning Road	London	NW3 1ST
Flat 2nd Floor	18	Denning Road	London	NW3 1SU
Flat Basement	18	Denning Road	London	NW3 1SU
Flat Ground Floor	18	Denning Road	London	NW3 1SU
Flat 1st Floor	18	Denning Road	London	NW3 1SU
	19	Denning Road	London	NW3 1ST
Flat 1st Floor	20	Denning Road	London	NW3 1SU
Flat Ground Floor	20	Denning Road	London	NW3 1SU
Flat 2nd Floor	20	Denning Road	London	NW3 1SU
Flat C	21	Denning Road	London	NW3 1ST
Flat B	21	Denning Road	London	NW3 1ST
Flat A	21	Denning Road	London	NW3 1ST
Flat 7	22	Denning Road	London	NW3 1SU
Flat 3	22	Denning Road	London	NW3 1SU
Flat 1	22	Denning Road	London	NW3 1SU
Flat 5	22	Denning Road	London	NW3 1SU
Flat 6	22	Denning Road	London	NW3 1SU
Flat 2	22	Denning Road	London	NW3 1SU
Flat 4	22	Denning Road	London	NW3 1SU
Flat 9	22	Denning Road	London	NW3 1SU
Flat 2	23	Denning Road	London	NW3 1ST
Flat A	23	Denning Road	London	NW3 1ST
Flat 3	23	Denning Road	London	NW3 1ST
Flat 4	23	Denning Road	London	NW3 1ST
Flat 1	23	Denning Road	London	NW3 1ST
	24	Denning Road	London	NW3 1SU
Flat A	24	Denning Road	London	NW3 1SU
Maisonette 1st And 2nd Floor	25	Denning Road	London	NW3 1ST
Flat Ground Floor	26	Denning Road	London	NW3 1SU
Flat 2nd Floor	26	Denning Road	London	NW3 1SU
Flat Top Floor	26	Denning Road	London	NW3 1SU
Flat 1st Floor	26	Denning Road	London	NW3 1SU
Flat A	26	Denning Road	London	NW3 1SU
	26	Denning Road	London	NW3 1SU
Flat 2	27	Denning Road	London	NW3 1ST
Flat 3	27	Denning Road	London	NW3 1ST
Flat 1	27	Denning Road	London	NW3 1ST
Flat A	27	Denning Road	London	NW3 1ST
Flat A	28	Denning Road	London	NW3 1SU
	28	Denning Road	London	NW3 1SU
	29	Denning Road	London	NW3 1ST
	30	Denning Road	London	NW3 1SU
Basement Flat	30	Denning Road	London	NW3 1SU
	31	Denning Road	London	NW3 1ST
Flat Basement And Hall Floor	32	Denning Road	London	NW3 1SU
Flat A	32	Denning Road	London	NW3 1SU

	33	Denning Road	London	NW3 1ST
	34	Denning Road	London	NW3 1SU
Flat C	36	Denning Road	London	NW3 1SU
Flat D	36	Denning Road	London	NW3 1SU
Flat B	36	Denning Road	London	NW3 1SU
	37	Denning Road	London	NW3 1ST
	38	Denning Road	London	NW3 1SU
Flat A	39	Denning Road	London	NW3 1ST
Flat C	39	Denning Road	London	NW3 1ST
Flat B	39	Denning Road	London	NW3 1ST
	40	Denning Road	London	NW3 1SU
Flat 2b	41	Denning Road	London	NW3 1ST
Flat 3b	41	Denning Road	London	NW3 1ST
Flat 3a	41	Denning Road	London	NW3 1ST
Flat 4	41	Denning Road	London	NW3 1ST
Flat 5	41	Denning Road	London	NW3 1ST
Flat 1	41	Denning Road	London	NW3 1ST
Flat 2a	41	Denning Road	London	NW3 1ST
	42	Denning Road	London	NW3 1SU
Flat A	42	Denning Road	London	NW3 1SU
Flat Basement And Hall Floor	43	Denning Road	London	NW3 1ST
Flat 2nd And 3rd Floor	43	Denning Road	London	NW3 1ST
Flat 1st Floor	43	Denning Road	London	NW3 1ST
Flat A	44	Denning Road	London	NW3 1SU
Flat B	44	Denning Road	London	NW3 1SU
Flat C	44	Denning Road	London	NW3 1SU
Flat D	44	Denning Road	London	NW3 1SU
	45	Denning Road	London	NW3 1ST
	47	Denning Road	London	NW3 1ST
	49	Denning Road	London	NW3 1ST
	1-3	Denning Road	London	NW3 1ST
	15A	Denning Road	London	NW3 1ST
	20A	Denning Road	London	NW3 1SU
	25A	Denning Road	London	NW3 1ST
	2A	Denning Road	London	NW3 1SU
	36A	Denning Road	London	NW3 1SU
	40A	Denning Road	London	NW3 1SU
	3	Downshire Hill	London	NW3 1NR
	13	Downshire Hill	London	NW3 1NR
Flat D	52	Downshire Hill	London	NW3 1PA
Flat A	52	Downshire Hill	London	NW3 1PA
Flat B	52	Downshire Hill	London	NW3 1PA
Flat C	52	Downshire Hill	London	NW3 1PA
	14A	Downshire Hill	London	NW3 1NR
	14B	Downshire Hill	London	NW3 1NR
	23A	Downshire Hill	London	NW3 1NT
	38A	Downshire Hill	London	NW3 1NU
	40A	Downshire Hill	London	NW3 1NU
	47A	Downshire Hill	London	NW3 1NX
	49A	Downshire Hill	London	NW3 1NX
	3	East Heath Road	London	NW3 1BN
Flat 1st And 2nd Floor	4	East Heath Road	London	NW3 1BN
Flat Ground Floor	4	East Heath Road	London	NW3 1BN
Flat Lower Ground Floor	4	East Heath Road	London	NW3 1BN

	5	East Heath Road	London	NW3 1BN
Flat 1	8	East Heath Road	London	NW3 1BN
Flat 2	8	East Heath Road	London	NW3 1BN
Flat 3	8	East Heath Road	London	NW3 1BN
Flat 4	8	East Heath Road	London	NW3 1BN
Studio B	18	East Heath Road	London	NW3 1AJ
Studio A	18	East Heath Road	London	NW3 1AJ
Flat 5	18	East Heath Road	London	NW3 1AJ
Flat 6	18	East Heath Road	London	NW3 1AJ
Flat 1	18	East Heath Road	London	NW3 1AJ
Flat 2nd Floor	18	East Heath Road	London	NW3 1AJ
Flat 2	18	East Heath Road	London	NW3 1AJ
Flat 3-4	18	East Heath Road	London	NW3 1AJ
Flat B	19	East Heath Road	London	NW3 1AJ
Flat D	19	East Heath Road	London	NW3 1AJ
Flat A	19	East Heath Road	London	NW3 1AJ
Flat C	19	East Heath Road	London	NW3 1AJ
Flat E	19	East Heath Road	London	NW3 1AJ
Flat B	20	East Heath Road	London	NW3 1AJ
Flat D	20	East Heath Road	London	NW3 1AJ
Flat A	20	East Heath Road	London	NW3 1AJ
Flat C	20	East Heath Road	London	NW3 1AJ
Flat C	24	East Heath Road	London	NW3 1EB
Flat B	24	East Heath Road	London	NW3 1EB
Flat D	24	East Heath Road	London	NW3 1EB
Flat A	24	East Heath Road	London	NW3 1EB
Flat F	25	East Heath Road	London	NW3 1EB
Flat G	25	East Heath Road	London	NW3 1EB
Flat E	25	East Heath Road	London	NW3 1EB
Flat H	25	East Heath Road	London	NW3 1EB
Flat A	6-7	East Heath Road	London	NW3 1BN
Flat E	6-7	East Heath Road	London	NW3 1BN
Flat F	6-7	East Heath Road	London	NW3 1BN
Flat G	6-7	East Heath Road	London	NW3 1BN
Flat H	6-7	East Heath Road	London	NW3 1BN
Flat B	6-7	East Heath Road	London	NW3 1BN
Flat C	6-7	East Heath Road	London	NW3 1BN
Flat D	6-7	East Heath Road	London	NW3 1BN
	Ladywell House	22A	East Heath Road	London NW3 1AJ
	Ladywell Lodge	22B	East Heath Road	London NW3 1AJ
	Lady Cottage	22C	East Heath Road	London NW3 1AJ
	Well Cottage			
	House	22D	East Heath Road	London NW3 1AJ
	Lady Heath			
	House	22E	East Heath Road	London NW3 1AH
Flat Ground Floor	1	East View	London	NW3 1AU
Flat 1st And 2nd Floor	1	East View	London	NW3 1AU
Flat Ground Floor	2	East View	London	NW3 1AU
Flat 1st And 2nd Floor	2	East View	London	NW3 1AU
	3	East View	London	NW3 1AU
Lower Flat	4	East View	London	NW3 1AU
Top Flat	4	East View	London	NW3 1AU
	4	East View	London	NW3 1AU
	6	Elm Row	London	NW3 1AA
	8	Elm Row	London	NW3 1AA

Flat A	8	Elm Row	London	NW3 1AA
	1A	Elm Row	London	NW3 1AA
	16	Flask Walk	London	NW3 1HE
Flat 1st And 2nd Floor	16	Flask Walk	London	NW3 1HE
	18	Flask Walk	London	NW3 1HE
	19	Flask Walk	London	NW3 1HH
Flat 1st And 2nd Floor	20	Flask Walk	London	NW3 1HE
Flat Ground Floor	20	Flask Walk	London	NW3 1HE
	21	Flask Walk	London	NW3 1HH
	22	Flask Walk	London	NW3 1HE
	23	Flask Walk	London	NW3 1HH
	24	Flask Walk	London	NW3 1HE
	25	Flask Walk	London	NW3 1HH
	26	Flask Walk	London	NW3 1HE
	27	Flask Walk	London	NW3 1HH
	28	Flask Walk	London	NW3 1HE
	29	Flask Walk	London	NW3 1HH
	30	Flask Walk	London	NW3 1HE
	32	Flask Walk	London	NW3 1HE
	34	Flask Walk	London	NW3 1HE
	36	Flask Walk	London	NW3 1HE
	38	Flask Walk	London	NW3 1HE
	40	Flask Walk	London	NW3 1HE
	42	Flask Walk	London	NW3 1HE
	44	Flask Walk	London	NW3 1HE
	49	Flask Walk	London	NW3 1HH
	51	Flask Walk	London	NW3 1HH
	56	Flask Walk	London	NW3 1HE
	58	Flask Walk	London	NW3 1HE
Flat A	60	Flask Walk	London	NW3 1HE
	60	Flask Walk	London	NW3 1HE
	63	Flask Walk	London	NW3 1EY
	67	Flask Walk	London	NW3 1EY
	71	Flask Walk	London	NW3 1ET
	73	Flask Walk	London	NW3 1ET
	71B	Flask Walk	London	NW3 1ET
Flat D	45	Frognal	London	NW3 6YA
Flat B	45	Frognal	London	NW3 6YA
Flat C	45	Frognal	London	NW3 6YA
Flat A	45	Frognal	London	NW3 6YA
	47	Frognal	London	NW3 6YA
Flat 1	53	Frognal	London	NW3 6YA
Flat 2	53	Frognal	London	NW3 6YA
Flat 3	53	Frognal	London	NW3 6YA
Flat 2	55	Frognal	London	NW3 6YA
Flat 1	55	Frognal	London	NW3 6YA
Flat 3	55	Frognal	London	NW3 6YA
	58	Frognal	London	NW3 6XG
	60	Frognal	London	NW3 6XG
	61	Frognal	London	NW3 6YA
	62	Frognal	London	NW3 6XG
	63	Frognal	London	NW3 6YA
Flat A		The Cottage	65	Frognal
Flat B		The Cottage	65	Frognal
				London
				NW3 6YA

		65	Frognal	London	NW3 6YA
		68	Frognal	London	NW3 6XD
Flat 1		69	Frognal	London	NW3 6YA
Flat 2		69	Frognal	London	NW3 6YA
		70	Frognal	London	NW3 6XD
	Bankside	71	Frognal	London	NW3 6XY
	Elmpoint	71	Frognal	London	NW3 6XY
	Highview	71	Frognal	London	NW3 6XY
	Hollybank House	71	Frognal	London	NW3 6XY
		85	Frognal	London	NW3 6XX
		87	Frognal	London	NW3 6XX
		89	Frognal	London	NW3 6XX
		90	Frognal	London	NW3 6XB
		91	Frognal	London	NW3 6XX
		92	Frognal	London	NW3 6XB
		93	Frognal	London	NW3 6XX
Flat B		93	Frognal	London	NW3 6XX
Flat C		93	Frognal	London	NW3 6XX
Flat A		93	Frognal	London	NW3 6XX
		96	Frognal	London	NW3 6XB
		98	Frognal	London	NW3 6XB
Flat B		100	Frognal	London	NW3 6XU
Flat C		100	Frognal	London	NW3 6XU
Flat D		100	Frognal	London	NW3 6XU
Flat A		100	Frognal	London	NW3 6XU
		102	Frognal	London	NW3 6XU
		112	Frognal	London	NW3 6XU
		113	Frognal	London	NW3 6XR
		114	Frognal	London	NW3 6XU
		115	Frognal	London	NW3 6XR
		116	Frognal	London	NW3 6XU
		118	Frognal	London	NW3 6XU
		120	Frognal	London	NW3 6XU
		122	Frognal	London	NW3 6XU
		59A	Frognal	London	NW3 6YA
		59B	Frognal	London	NW3 6YA
		99A	Frognal	London	NW3 6XR
Flat 2nd Floor		1	Frognal Gardens	London	NW3 6UY
Flat Ground And 1st Floor		1	Frognal Gardens	London	NW3 6UY
		1	Frognal Gardens	London	NW3 6UY
		2	Frognal Gardens	London	NW3 6UX
		3	Frognal Gardens	London	NW3 6UY
Flat A		3	Frognal Gardens	London	NW3 6UY
Flat 2		4	Frognal Gardens	London	NW3 6UX
Flat 3		4	Frognal Gardens	London	NW3 6UX
Flat 1		4	Frognal Gardens	London	NW3 6UX
Flat A		4	Frognal Gardens	London	NW3 6UX
		5	Frognal Gardens	London	NW3 6UY
Flat 1st Floor		6	Frognal Gardens	London	NW3 6UX
Flat Ground Floor		6	Frognal Gardens	London	NW3 6UX
Flat 2nd And 3rd Floor		6	Frognal Gardens	London	NW3 6UX
		7	Frognal Gardens	London	NW3 6UY
Flat A		8	Frognal Gardens	London	NW3 6UX
Flat 1		8	Frognal Gardens	London	NW3 6UX

Flat 3	8	Frognal Gardens		NW3 6UX
Flat 2	8	Frognal Gardens	London	NW3 6UX
Flat 4	8	Frognal Gardens	London	NW3 6UX
	9	Frognal Gardens	London	NW3 6UY
Flat 2	10	Frognal Gardens	London	NW3 6UX
Flat 4	10	Frognal Gardens	London	NW3 6UX
Flat 3	10	Frognal Gardens	London	NW3 6UX
Garden Flat	10	Frognal Gardens	London	NW3 6UX
Flat 1	10	Frognal Gardens	London	NW3 6UX
Flat 3	12	Frognal Gardens	London	NW3 6UX
Flat 5	12	Frognal Gardens	London	NW3 6UX
Flat 2	12	Frognal Gardens	London	NW3 6UX
Flat 1	12	Frognal Gardens	London	NW3 6UX
Flat 4	12	Frognal Gardens	London	NW3 6UX
Flat D	14	Frognal Gardens	London	NW3 6UX
Flat B	14	Frognal Gardens	London	NW3 6UX
Flat C	14	Frognal Gardens	London	NW3 6UX
Flat A	14	Frognal Gardens	London	NW3 6UX
Flat E	14	Frognal Gardens	London	NW3 6UX
Garden Flat Rear	16	Frognal Gardens	London	NW3 6UX
Flat 3	16	Frognal Gardens	London	NW3 6UX
Flat 4	16	Frognal Gardens	London	NW3 6UX
Flat 2	16	Frognal Gardens	London	NW3 6UX
Flat 1	16	Frognal Gardens	London	NW3 6UX
Flat 5	16	Frognal Gardens	London	NW3 6UX
Flat Ground Floor	18	Frognal Gardens	London	NW3 6XA
Flat 1st And 2nd Floor	18	Frognal Gardens	London	NW3 6XA
	20	Frognal Gardens	London	NW3 6XA
	16A	Frognal Gardens	London	NW3 6UX
	18A	Frognal Gardens	London	NW3 6XA
	18B	Frognal Gardens	London	NW3 6XA
	5A	Frognal Gardens	London	NW3 6UY
Flat Garden Floor Front	6A	Frognal Gardens	London	NW3 6UX
Flat Garden Floor Rear	6A	Frognal Gardens		NW3 6UX
	44	Frognal Lane	London	NW3 6PP
	46	Frognal Lane	London	NW3 6PP
	42A	Frognal Lane	London	NW3 6PP
	2	Frognal Rise	London	NW3 6RD
	4	Frognal Rise	London	NW3 6RD
		Gainsborough		
Flat C	7	Gardens	London	NW3 1BJ
		Gainsborough		
Flat A	7	Gardens	London	NW3 1BJ
		Gainsborough		
Flat B	7	Gardens	London	NW3 1BJ
		Gainsborough		
Flat 1	8	Gardens	London	NW3 1BJ
		Gainsborough		
Flat 2	8	Gardens	London	NW3 1BJ
		Gainsborough		
Flat 3	8	Gardens	London	NW3 1BJ
		Gainsborough		
Flat 4	8	Gardens	London	NW3 1BJ
	1	Gardnor Road	London	NW3 1HA
Flat 2	2	Gardnor Road	London	NW3 1HA
Flat 3	2	Gardnor Road	London	NW3 1HA

Flat 1	2	Gardnor Road	London	NW3 1HA
Flat A	3	Gardnor Road	London	NW3 1HA
Flat B	3	Gardnor Road	London	NW3 1HA
	4	Gardnor Road	London	NW3 1HA
	5	Gardnor Road	London	NW3 1HA
Flat B	6	Gardnor Road	London	NW3 1HA
Flat A	6	Gardnor Road	London	NW3 1HA
	7	Gardnor Road	London	NW3 1HA
Flat A	8	Gardnor Road	London	NW3 1HA
Flat B	8	Gardnor Road	London	NW3 1HA
	9	Gardnor Road	London	NW3 1HA
	10	Gardnor Road	London	NW3 1HA
	11	Gardnor Road	London	NW3 1HA
	12	Gardnor Road	London	NW3 1HA
	13	Gardnor Road	London	NW3 1HA
	14	Gardnor Road	London	NW3 1HA
	15	Gardnor Road	London	NW3 1HA
	16	Gardnor Road	London	NW3 1HA
	17	Gardnor Road	London	NW3 1HA
Flat B	18	Gardnor Road	London	NW3 1HA
Flat A	18	Gardnor Road	London	NW3 1HA
Flat 1	19	Gardnor Road	London	NW3 1HA
Flat 2	19	Gardnor Road	London	NW3 1HA
Flat 3	19	Gardnor Road	London	NW3 1HA
	13A	Gardnor Road	London	NW3 1HA
	13B	Gardnor Road	London	NW3 1HA
	13C	Gardnor Road	London	NW3 1HA
		Gardnor House		
		Gardnor Road	London	NW3 1HA
	1	Gayton Crescent	London	NW3 1TT
Flat A	2	Gayton Crescent	London	NW3 1TT
Flat B	2	Gayton Crescent	London	NW3 1TT
	3	Gayton Crescent	London	NW3 1TT
	4	Gayton Crescent	London	NW3 1TT
Flat A	4	Gayton Crescent	London	NW3 1TT
	5	Gayton Crescent	London	NW3 1TT
	6	Gayton Crescent	London	NW3 1TT
	7	Gayton Crescent	London	NW3 1TT
Flat A	7	Gayton Crescent	London	NW3 1TT
Flat Second And Third Floor	8	Gayton Crescent	London	NW3 1TT
Flat Ground And First Floor	8	Gayton Crescent	London	NW3 1TT
Basement Flat	8	Gayton Crescent	London	NW3 1TT
Flat C	9	Gayton Crescent	London	NW3 1TT
Flat D	9	Gayton Crescent	London	NW3 1TT
Flat A	9	Gayton Crescent	London	NW3 1TT
Flat B	9	Gayton Crescent	London	NW3 1TT
	10	Gayton Crescent	London	NW3 1TT
	11	Gayton Crescent	London	NW3 1TT
Flat Ground Floor	12	Gayton Crescent	London	NW3 1TT
Flat 2nd And 3rd Floor	12	Gayton Crescent	London	NW3 1TT
Flat A	12	Gayton Crescent	London	NW3 1TT
Flat 1st Floor	12	Gayton Crescent	London	NW3 1TT
Flat 3	13	Gayton Crescent	London	NW3 1TT
Flat 4	13	Gayton Crescent	London	NW3 1TT
Flat 1	13	Gayton Crescent	London	NW3 1TT

Flat 2	13	Gayton Crescent	London	NW3 1TT
Flat 2	14	Gayton Crescent	London	NW3 1TT
Flat 3	14	Gayton Crescent	London	NW3 1TT
Flat 4	14	Gayton Crescent	London	NW3 1TT
Flat 1	14	Gayton Crescent	London	NW3 1TT
	15	Gayton Crescent	London	NW3 1TT
	17	Gayton Crescent	London	NW3 1UA
	18	Gayton Crescent	London	NW3 1UA
	19	Gayton Crescent	London	NW3 1UA
	20	Gayton Crescent	London	NW3 1UA
	23	Gayton Crescent	London	NW3 1UA
	21-			
	22	Gayton Crescent	London	NW3 1UA
	1	Gayton Road	London	NW3 1TX
	2	Gayton Road	London	NW3 1TX
Flat A	3	Gayton Road	London	NW3 1TX
	3	Gayton Road	London	NW3 1TX
Flat A	4	Gayton Road	London	NW3 1TX
Flat Ground Floor	4	Gayton Road	London	NW3 1TX
Flat 1st And 2nd Floor	4	Gayton Road	London	NW3 1TX
Flat 1st And 2nd Floor	5	Gayton Road	London	NW3 1TX
Flat Hall Floor	5	Gayton Road	London	NW3 1TX
Flat A	5	Gayton Road	London	NW3 1TX
	6	Gayton Road	London	NW3 1TX
	7	Gayton Road	London	NW3 1TX
	8	Gayton Road	London	NW3 1TX
	9	Gayton Road	London	NW3 1TX
	10	Gayton Road	London	NW3 1TX
	11	Gayton Road	London	NW3 1TX
	12	Gayton Road	London	NW3 1TX
Flat 2nd Floor	13	Gayton Road	London	NW3 1TX
Flat 2	13	Gayton Road	London	NW3 1TX
Flat 3	13	Gayton Road	London	NW3 1TX
Basement Flat	13	Gayton Road	London	NW3 1TX
	14	Gayton Road	London	NW3 1TX
	15	Gayton Road	London	NW3 1TX
	16	Gayton Road	London	NW3 1TX
	17	Gayton Road	London	NW3 1TX
	18	Gayton Road	London	NW3 1TX
Garden Flat	18	Gayton Road	London	NW3 1TX
	19	Gayton Road	London	NW3 1TX
	20	Gayton Road	London	NW3 1TX
Flat C	21	Gayton Road	London	NW3 1TY
Flat A	21	Gayton Road	London	NW3 1TY
Flat B	21	Gayton Road	London	NW3 1TY
	22	Gayton Road	London	NW3 1TY
	23	Gayton Road	London	NW3 1TY
	24	Gayton Road	London	NW3 1TY
Flat A	25	Gayton Road	London	NW3 1TY
Flat B	25	Gayton Road	London	NW3 1TY
Flat C	25	Gayton Road	London	NW3 1TY
	26	Gayton Road	London	NW3 1TY
Flat A	26	Gayton Road	London	NW3 1TY
	27	Gayton Road	London	NW3 1TY

	28	Gayton Road	London	NW3 1TY
Flat Lower Ground Floor Front	28	Gayton Road	London	NW3 1TY
	29	Gayton Road	London	NW3 1TY
	30	Gayton Road	London	NW3 1TY
Flat A	30	Gayton Road	London	NW3 1TY
	31	Gayton Road	London	NW3 1TY
	32	Gayton Road	London	NW3 1TY
	33	Gayton Road	London	NW3 1TY
	34	Gayton Road	London	NW3 1TY
	35	Gayton Road	London	NW3 1TY
	36	Gayton Road	London	NW3 1TY
	37	Gayton Road	London	NW3 1UB
	38	Gayton Road	London	NW3 1UB
Flat Basement	39	Gayton Road	London	NW3 1TU
	39	Gayton Road	London	NW3 1TU
FLAT 1ST AND 2ND FLOOR	40	Gayton Road	London	NW3 1TU
Flat Basement And Ground Floor	40	Gayton Road	London	NW3 1TU
Flat A	41	Gayton Road	London	NW3 1TU
Flat B	41	Gayton Road	London	NW3 1TU
Flat C	41	Gayton Road	London	NW3 1TU
Flat Ground Floor	42	Gayton Road	London	NW3 1TU
Flat 1st And 2nd Floor	42	Gayton Road	London	NW3 1TU
Flat A	42	Gayton Road	London	NW3 1TU
	43	Gayton Road	London	NW3 1TU
Flat A	44	Gayton Road	London	NW3 1TU
	44	Gayton Road	London	NW3 1TU
Flat B	45	Gayton Road	London	NW3 1TU
Flat A	45	Gayton Road	London	NW3 1TU
Flat C	45	Gayton Road	London	NW3 1TU
Flat Basement And Ground Floor	46	Gayton Road	London	NW3 1TU
Flat First And Second Floor	46	Gayton Road	London	NW3 1TU
Basement Flat	47	Gayton Road	London	NW3 1TU
Maisonette Ground 1st And 2nd Floor	47	Gayton Road	London	NW3 1TU
	48	Gayton Road	London	NW3 1TU
Flat Ground Floor	49	Gayton Road	London	NW3 1TU
Flat 1st Floor	49	Gayton Road	London	NW3 1TU
Flat 2nd Floor	49	Gayton Road	London	NW3 1TU
Flat A	49	Gayton Road	London	NW3 1TU
	50	Gayton Road	London	NW3 1TU
	51	Gayton Road	London	NW3 1TU
	52	Gayton Road	London	NW3 1TU
	53	Gayton Road	London	NW3 1TU
	54	Gayton Road	London	NW3 1TU
Flat 1st And 2nd Floor	55	Gayton Road	London	NW3 1TU
Flat Basement And Ground Floor	55	Gayton Road	London	NW3 1TU
Basement Flat	56	Gayton Road	London	NW3 1TU
	56	Gayton Road	London	NW3 1TU
Flat 1st 2nd And 3rd Floor	57	Gayton Road	London	NW3 1TU
Flat Ground Floor	57	Gayton Road	London	NW3 1TU
Basement Flat	57	Gayton Road	London	NW3 1TU
	58	Gayton Road	London	NW3 1TU
Flat B	59	Gayton Road	London	NW3 1TU
Flat A	61	Gayton Road	London	NW3 1TU

Flat 3	62	Gayton Road	London	NW3 1TU
Flat 2	62	Gayton Road	London	NW3 1TU
Flat 1	62	Gayton Road	London	NW3 1TU
	2A	Gayton Road	London	NW3 1TX
	36A	Gayton Road	London	NW3 1TY
	37A	Gayton Road	London	NW3 1UB
	37B	Gayton Road	London	NW3 1UB
	38A	Gayton Road	London	NW3 1UB
	59-			
Flat 1st 2nd And 3rd Floor	60	Gayton Road	London	NW3 1TU
	1	Grove Place	London	NW3 1JP
	2	Grove Place	London	NW3 1JP
	3	Grove Place	London	NW3 1JP
	4	Grove Place	London	NW3 1JP
	5	Grove Place	London	NW3 1JP
	6	Grove Place	London	NW3 1JP
	7	Grove Place	London	NW3 1JP
	8	Grove Place	London	NW3 1JP
	9	Grove Place	London	NW3 1JP
	10	Grove Place	London	NW3 1JP
	11	Grove Place	London	NW3 1JP
	12	Grove Place	London	NW3 1JP
	13	Grove Place	London	NW3 1JP
	14	Grove Place	London	NW3 1JP
	15	Grove Place	London	NW3 1JP
	16	Grove Place	London	NW3 1JP
	17	Grove Place	London	NW3 1JP
	18	Grove Place	London	NW3 1JP
	19	Grove Place	London	NW3 1JP
	20	Grove Place	London	NW3 1JP
	21	Grove Place	London	NW3 1JP
	22	Grove Place	London	NW3 1JP
	23	Grove Place	London	NW3 1JP
	24	Grove Place	London	NW3 1JP
	25	Grove Place	London	NW3 1JP
	26	Grove Place	London	NW3 1JP
	27	Grove Place	London	NW3 1JP
	28	Grove Place	London	NW3 1JP
	29	Grove Place	London	NW3 1JR
	30	Grove Place	London	NW3 1JR
	31	Grove Place	London	NW3 1JS
		Grove Place	London	NW3 1JR
Trellis Cottage	4	Hampstead Grove	London	NW3 6SP
	6	Hampstead Grove	London	NW3 6SP
	12	Hampstead Grove	London	NW3 6SP
	14	Hampstead Grove	London	NW3 6SP
	25	Hampstead Grove	London	NW3 6SR
	30	Hampstead Grove	London	NW3 6SR
	32	Hampstead Grove	London	NW3 6SR
	34	Hampstead Grove	London	NW3 6SR
	36	Hampstead Grove	London	NW3 6SR
	38	Hampstead Grove	London	NW3 6SR
	40	Hampstead Grove	London	NW3 6SR
	42	Hampstead Grove	London	NW3 6SR

		8-10	Hampstead Grove	London	NW3 6SP
	Bird In Hand Cottage		Hampstead High Street	London	NW3 1QE
2-3	Coach House Yard		Hampstead High Street	London	NW3 1QF
	Coach House Yard	1	Hampstead High Street	London	NW3 1QF
		2	Hampstead High Street	London	NW3 1QW
	Martys Yard		Hampstead High Street	London	NW3 1QW
		1	Hampstead Hill		
The Coach House		6	Gardens	London	NW3 2PL
Flat 2nd Floor		6	Hampstead Hill	London	NW3 2PL
Flat Ground Floor		6	Gardens	London	NW3 2PL
Garden Flat		6	Hampstead Hill	London	NW3 2PL
Flat 1st Floor		6	Gardens	London	NW3 2PL
		10	Hampstead Hill	London	NW3 2PL
		12	Gardens	London	NW3 2PL
		13	Hampstead Hill	London	NW3 2PH
Flat A		14	Gardens	London	NW3 2PL
Flat B		14	Hampstead Hill	London	NW3 2PL
Flat C		14	Gardens	London	NW3 2PL
Flat D		14	Hampstead Hill	London	NW3 2PL
Flat A		15	Gardens	London	NW3 2PH
Flat C		15	Hampstead Hill	London	NW3 2PH
Flat D		15	Gardens	London	NW3 2PH
Flat B		15	Hampstead Hill	London	NW3 2PH
Flat D		16	Gardens	London	NW3 2PL
Flat A		16	Hampstead Hill	London	NW3 2PL
Flat B		16	Gardens	London	NW3 2PL
Flat C		16	Hampstead Hill	London	NW3 2PL
Top Flat		17	Gardens	London	NW3 2PH
Flat Ground Floor		17	Hampstead Hill	London	NW3 2PH
Garden Flat		17	Gardens	London	NW3 2PH
Flat 1st Floor		17	Hampstead Hill	London	NW3 2PH

	18	Hampstead Hill Gardens	London	NW3 2PL
Flat A	18	Hampstead Hill Gardens	London	NW3 2PL
Flat A	19	Hampstead Hill Gardens	London	NW3 2PJ
Flat C	19	Hampstead Hill Gardens	London	NW3 2PJ
Flat D	19	Hampstead Hill Gardens	London	NW3 2PJ
Flat B	19	Hampstead Hill Gardens	London	NW3 2PJ
Flat 1	20	Hampstead Hill Gardens	London	NW3 2PL
Flat 4	20	Hampstead Hill Gardens	London	NW3 2PL
Flat 3	20	Hampstead Hill Gardens	London	NW3 2PL
Flat 2	20	Hampstead Hill Gardens	London	NW3 2PL
Flat 1	21	Hampstead Hill Gardens	London	NW3 2PJ
Flat 2	21	Hampstead Hill Gardens	London	NW3 2PJ
Flat 3	21	Hampstead Hill Gardens	London	NW3 2PJ
Flat A	21	Hampstead Hill Gardens	London	NW3 2PJ
Basement Flat	23	Hampstead Hill Gardens	London	NW3 2PJ
Flat 1	23	Hampstead Hill Gardens	London	NW3 2PJ
Flat 4	23	Hampstead Hill Gardens	London	NW3 2PJ
Flat 3	23	Hampstead Hill Gardens	London	NW3 2PJ
Flat 2	23	Hampstead Hill Gardens	London	NW3 2PJ
Flat A	25	Hampstead Hill Gardens	London	NW3 2PJ
Flat D	25	Hampstead Hill Gardens	London	NW3 2PJ
Flat B	25	Hampstead Hill Gardens	London	NW3 2PJ
Flat C	25	Hampstead Hill Gardens	London	NW3 2PJ
	27	Hampstead Hill Gardens	London	NW3 2PJ
Flat 1st Floor	29	Hampstead Hill Gardens	London	NW3 2PJ
Flat 2nd Floor	29	Hampstead Hill Gardens	London	NW3 2PJ
Flat 3rd Floor	29	Hampstead Hill Gardens	London	NW3 2PJ
Flat Basement And Ground Floor	29	Hampstead Hill Gardens	London	NW3 2PJ
	31	Hampstead Hill Gardens	London	NW3 2PJ
Flat 6	33	Hampstead Hill Gardens	London	NW3 2PJ

Flat 4	33	Hampstead Hill Gardens	London	NW3 2PJ
Flat 7	33	Hampstead Hill Gardens	London	NW3 2PJ
Flat 3	33	Hampstead Hill Gardens	London	NW3 2PJ
Flat 2	33	Hampstead Hill Gardens	London	NW3 2PJ
Flat 5	33	Hampstead Hill Gardens	London	NW3 2PJ
Flat 1	33	Hampstead Hill Gardens	London	NW3 2PJ
Studio House The Conservatory	10A	Hampstead Hill Gardens	London	NW3 2PL
	27A	Hampstead Hill Gardens	London	NW3 2PJ
	27B	Hampstead Hill Gardens	London	NW3 2PJ
		Hampstead Hill Gardens		NW3 2PH
		Hampstead Hill Gardens	London	NW3 2PL
	10	Hampstead Square	London	NW3 1AB
	11	Hampstead Square	London	NW3 1AB
	1	Heath Hurst Road	London	NW3 2RU
	2	Heath Hurst Road	London	NW3 2RX
	4	Heath Hurst Road	London	NW3 2RX
Flat C	5	Heath Hurst Road	London	NW3 2RU
Flat A	5	Heath Hurst Road	London	NW3 2RU
Flat B	5	Heath Hurst Road	London	NW3 2RU
Flat E	5	Heath Hurst Road	London	NW3 2RU
Flat D	5	Heath Hurst Road	London	NW3 2RU
Flat 1	6	Heath Hurst Road	London	NW3 2RX
Flat 2	6	Heath Hurst Road	London	NW3 2RX
Flat 3	6	Heath Hurst Road	London	NW3 2RX
	7	Heath Hurst Road	London	NW3 2RU
	8	Heath Hurst Road	London	NW3 2RX
	9	Heath Hurst Road	London	NW3 2RU
	10	Heath Hurst Road	London	NW3 2RX
	11	Heath Hurst Road	London	NW3 2RU
	12	Heath Hurst Road	London	NW3 2RX
	13	Heath Hurst Road	London	NW3 2RU
	14	Heath Hurst Road	London	NW3 2RX
	15	Heath Hurst Road	London	NW3 2RU
	16	Heath Hurst Road	London	NW3 2RX
	17	Heath Hurst Road	London	NW3 2RU
	18	Heath Hurst Road	London	NW3 2RX
Flat Mezzanine Floor	19	Heath Hurst Road	London	NW3 2RU
Flat Ground Floor	19	Heath Hurst Road	London	NW3 2RU
Flat 1st And 2nd Floor	19	Heath Hurst Road	London	NW3 2RU
	20	Heath Hurst Road	London	NW3 2RX
	21	Heath Hurst Road	London	NW3 2RU
	22	Heath Hurst Road	London	NW3 2RX
	23	Heath Hurst Road	London	NW3 2RU
	24	Heath Hurst Road	London	NW3 2RX
	25	Heath Hurst Road	London	NW3 2RU

		26	Heath Hurst Road	London	NW3 2RX
		27	Heath Hurst Road	London	NW3 2RU
		28	Heath Hurst Road	London	NW3 2RX
		29	Heath Hurst Road	London	NW3 2RU
		30	Heath Hurst Road	London	NW3 2RX
		31	Heath Hurst Road	London	NW3 2RU
		32	Heath Hurst Road	London	NW3 2RX
		33	Heath Hurst Road	London	NW3 2RU
		34	Heath Hurst Road	London	NW3 2RX
		35	Heath Hurst Road	London	NW3 2RU
Flat 1st And 2nd Floor		36	Heath Hurst Road	London	NW3 2RX
		37	Heath Hurst Road	London	NW3 2RU
		38	Heath Hurst Road	London	NW3 2RX
		39	Heath Hurst Road	London	NW3 2RU
		41	Heath Hurst Road	London	NW3 2RU
		43	Heath Hurst Road	London	NW3 2RU
		45	Heath Hurst Road	London	NW3 2RU
		47	Heath Hurst Road	London	NW3 2RU
		36A	Heath Hurst Road	London	NW3 2RX
		3A	Heath Hurst Road	London	NW3 2RU
		3B	Heath Hurst Road	London	NW3 2RU
		3C	Heath Hurst Road	London	NW3 2RU
		3D	Heath Hurst Road	London	NW3 2RU
		6	Heath Passage	London	NW3 7HB
	Prospect Cottage		Heath Street	London	NW3 6UG
	Prospect House		Heath Street	London	6UG
		3	Heathside	London	NW3 1BL
	Heath Lodge		Heathside	London	NW3 1BL
	South Lodge		Heathside	London	NW3 1BL
Flat 1		1	Holford Road	London	NW3 1AD
Flat 2		1	Holford Road	London	NW3 1AD
Flat 4		1	Holford Road	London	NW3 1AD
Flat 3		1	Holford Road	London	NW3 1AD
Flat 4		2	Holford Road	London	NW3 1AD
Flat 5		2	Holford Road	London	NW3 1AD
Flat 2		2	Holford Road	London	NW3 1AD
Flat 1		2	Holford Road	London	NW3 1AD
Flat 3		2	Holford Road	London	NW3 1AD
		3	Holford Road	London	NW3 1AD
Garden Flat		4	Holford Road	London	NW3 1AD
Gable Flat		4	Holford Road	London	NW3 1AD
		4	Holford Road	London	NW3 1AD
		6	Holford Road	London	NW3 1AD
		7	Holford Road	London	NW3 1AD
		8	Holford Road	London	NW3 1AD
Staff Flat		9	Holford Road		NW3 1AD
		9	Holford Road	London	NW3 1AD
		7A	Holford Road	London	NW3 1AD
		9A	Holford Road	London	NW3 1AD
2-3	Golden Yard		Holly Bush Steps	London	NW3 6UH
	5 Golden Yard		Holly Bush Steps	London	NW3 6UH
	4 Golden Yard		Holly Bush Steps	London	NW3 6UH
5A	Golden Yard		Holly Bush Steps	London	NW3 6UH

	1	Holly Bush Vale	London	NW3 6TX
	3	Holly Bush Vale	London	NW3 6TX
	6	Holly Bush Vale	London	NW3 6TX
	16	Holly Bush Vale	London	NW3 6TX
	2A	Holly Bush Vale	London	NW3 6TX
	3	Holly Hill	London	6QN NW3
Flat A	5	Holly Hill	London	6QN
Flat 4	6	Holly Hill	London	NW3 6SE
Flat 3	6	Holly Hill	London	NW3 6SE
Flat 2	6	Holly Hill	London	NW3 6SE
Flat 1	6	Holly Hill	London	NW3 6SE
Flat 3	8	Holly Hill	London	NW3 6SE
Flat 4	8	Holly Hill	London	NW3 6SE
Flat 5	8	Holly Hill	London	NW3 6SE
Flat 1	8	Holly Hill	London	NW3 6SE
Flat 2	8	Holly Hill	London	NW3 6SE
	10	Holly Hill	London	NW3 6SE NW3
	11	Holly Hill	London	6QN
	12	Holly Mount	London	NW3 6SG
	14	Holly Mount	London	NW3 6SG
	16	Holly Mount	London	NW3 6SG
	17	Holly Mount	London	NW3 6SG
	24	Holly Mount	London	NW3 6SG NW3
	7	Holly Place	London	6QU
	11	Holly Walk	London	NW3 6RA
	16	Holly Walk	London	NW3 6RA
	18	Holly Walk	London	NW3 6RA
	20	Holly Walk	London	NW3 6RA
	10	Hollyberry Lane	London	NW3 6QT
	11	Hollyberry Lane	London	NW3 6QT
	1	Inverforth Close	London	NW3 7EX
	2	Inverforth Close	London	NW3 7EX
	3	Inverforth Close	London	NW3 7EX
	4	Inverforth Close	London	NW3 7EX
	5	Inverforth Close	London	NW3 7EX
	6	Inverforth Close	London	NW3 7EX
	7	Inverforth Close	London	NW3 7EX
	8	Inverforth Close	London	NW3 7EX
Heath Lodge		Inverforth Close	London	NW3 7EX
	1	Keats Close	London	NW3 2RP
	2	Keats Close	London	NW3 2RP
	3	Keats Close	London	NW3 2RP
	4	Keats Close	London	NW3 2RP
	5	Keats Close	London	NW3 2RP
	6	Keats Close	London	NW3 2RP
	5	Keats Grove	London	NW3 2RT
	6	Keats Grove	London	NW3 2RT
	9	Keats Grove	London	NW3 2RR
	12	Keats Grove	London	NW3 2RN
	14	Keats Grove	London	NW3 2RS
	15	Keats Grove	London	NW3 2RS

	16	Keats Grove	London	NW3 2RS
	23	Keats Grove	London	NW3 2RS
	12A	Keats Grove	London	NW3 2RN
	12B	Keats Grove	London	NW3 2RN
	14A	Keats Grove	London	NW3 2RS
The White House		Keats Grove	London	NW3 2RT
	1	Kemplay Road	London	NW3 1TA
Flat	2	Kemplay Road	London	NW3 1SY
	2	Kemplay Road	London	NW3 1SY
	3	Kemplay Road	London	NW3 1TA
Flat C	4	Kemplay Road	London	NW3 1SY
Flat A	4	Kemplay Road	London	NW3 1SY
Flat B	4	Kemplay Road	London	NW3 1SY
Maisonette Lower Ground Ground				
And 1st Floor	10	Kemplay Road	London	NW3 1SY
Flat 2nd And 3rd Floor	10	Kemplay Road	London	NW3 1SY
Flat Ground Floor	12	Kemplay Road	London	NW3 1SY
Flat 1st Floor	12	Kemplay Road	London	NW3 1SY
Flat Top Floor	12	Kemplay Road	London	NW3 1SY
Flat Ground And 1st Floor	14	Kemplay Road	London	NW3 1SY
Flat 2nd And 3rd Floor	14	Kemplay Road	London	NW3 1SY
	16	Kemplay Road	London	NW3 1SY
Flat 1st Floor	18	Kemplay Road	London	NW3 1SY
Flat 2nd Floor	18	Kemplay Road	London	NW3 1SY
Flat Ground Floor	18	Kemplay Road	London	NW3 1SY
Flat 3rd Floor	18	Kemplay Road	London	NW3 1SY
Flat A	18	Kemplay Road	London	NW3 1SY
	20	Kemplay Road	London	NW3 1SY
	22	Kemplay Road	London	NW3 1SY
	23	Kemplay Road	London	NW3 1TA
Basement Flat	24	Kemplay Road	London	NW3 1SY
Flat 1st Floor	24	Kemplay Road	London	NW3 1SY
Flat Ground Floor	24	Kemplay Road	London	NW3 1SY
Flat 2nd And 3rd Floor	24	Kemplay Road	London	NW3 1SY
Flat 2	25	Kemplay Road	London	NW3 1TA
Flat 3	25	Kemplay Road	London	NW3 1TA
	26	Kemplay Road	London	NW3 1SY
	27	Kemplay Road	London	NW3 1TA
	28	Kemplay Road	London	NW3 1SY
Flat 1st Floor	30	Kemplay Road	London	NW3 1SY
Flat Ground Floor	30	Kemplay Road	London	NW3 1SY
Flat 2nd And 3rd Floor	30	Kemplay Road	London	NW3 1SY
Flat A	30	Kemplay Road	London	NW3 1SY
6C	6-8	Kemplay Road	London	NW3 1SY
6A	6-8	Kemplay Road	London	NW3 1SY
6B	6-8	Kemplay Road	London	NW3 1SY
	6-8	Kemplay Road	London	NW3 1SY
	12A	Kemplay Road	London	NW3 1SY
	1A	Kemplay Road	London	NW3 1TA
	14	Lower Terrace	London	NW3 6RE
	1	Lutton Terrace	London	NW3 1HB
Flat A	2	Lutton Terrace	London	NW3 1HB
Flat B	2	Lutton Terrace	London	NW3 1HB
Flat C	2	Lutton Terrace	London	NW3 1HB

Flat 2	3	Lutton Terrace	London	NW3 1HB
Flat 1	3	Lutton Terrace	London	NW3 1HB
Flat 3	3	Lutton Terrace	London	NW3 1HB
	4	Lutton Terrace	London	NW3 1HB
	3	Mansfield Place	London	NW3 1HS
	4	Mansfield Place	London	NW3 1HS
	5	Mansfield Place	London	NW3 1HS
	6	Mansfield Place	London	NW3 1HS
	7	Mansfield Place	London	NW3 1HS
	8	Mansfield Place	London	NW3 1HS
	11	Mansfield Place	London	NW3 1HS
	12	Mansfield Place	London	NW3 1HS
	13	Mansfield Place	London	NW3 1HS
	1-2	Mansfield Place	London	NW3 1HS
	9-			
	10	Mansfield Place	London	NW3 1HS
	1	Maryon Mews	London	NW3 2PU
	2	Maryon Mews	London	NW3 2PU
	3	Maryon Mews	London	NW3 2PU
	4	Maryon Mews	London	NW3 2PU
	5	Maryon Mews	London	NW3 2PU
	6	Maryon Mews	London	NW3 2PU
	7	Maryon Mews	London	NW3 2PU
	8	Maryon Mews	London	NW3 2PU
	30	Maryon Mews	London	NW3 2PU
Flat 1st Floor	33	Maryon Mews	London	NW3 2PU
	34	Maryon Mews	London	NW3 2PU
	35	Maryon Mews	London	NW3 2PU
	36	Maryon Mews	London	NW3 2PU
	1A	Maryon Mews	London	NW3 2PU
	2A	Maryon Mews	London	NW3 2PU
	1	Murray Terrace	London	NW3 1EX
	2	Murray Terrace	London	NW3 1EX
	3	Murray Terrace	London	NW3 1EX
	4	Murray Terrace	London	NW3 1EX
	3	New End	London	NW3 1JD
	5	New End	London	NW3 1JD
	7	New End	London	NW3 1JD
	9	New End	London	NW3 1JD
	11	New End	London	NW3 1JD
Flat Ground Floor	13	New End	London	NW3 1JD
Flat 1st Floor	13	New End	London	NW3 1JD
Flat 2nd Floor	13	New End	London	NW3 1JD
Flat 3	15	New End	London	NW3 1JD
Flat 2	15	New End	London	NW3 1JD
Flat 1	15	New End	London	NW3 1JD
	16	New End	London	NW3 1JA
	17	New End	London	NW3 1JD
	18	New End	London	NW3 1JA
	19	New End	London	NW3 1JD
	20	New End	London	NW3 1JA
	21	New End	London	NW3 1JD
	22	New End	London	NW3 1JA
	24	New End	London	NW3 1JA

Flat Ground Floor	26	New End	London	NW3 1JA
Flat 1st And 2nd Floor	26	New End	London	NW3 1JA
	28	New End	London	NW3 1JA
	42	New End	London	NW3 1HX
	57	New End	London	NW3 1HY
	59	New End	London	NW3 1HY
	61	New End	London	NW3 1HY
	63	New End	London	NW3 1HY
	65	New End	London	NW3 1HY
	67	New End	London	NW3 1HY
	69	New End	London	NW3 1HY
	71	New End	London	NW3 1HY
	23-			
	25	New End	London	NW3 1JD
	2A	New End	London	NW3 1DD
	2B	New End	London	NW3 1DD
	2C	New End	London	NW3 1DD
	4A	New End	London	NW3 1DD
	4B	New End	London	NW3 1DD
	4C	New End	London	NW3 1DD
	6A	New End	London	NW3 1DD
	6B	New End	London	NW3 1DD
	6C	New End	London	NW3 1DD
	1	New End Square	London	NW3 1LP
	2	New End Square	London	NW3 1LN
	3	New End Square	London	NW3 1LP
	5	New End Square	London	NW3 1LP
	14	New End Square	London	NW3 1LN
Flat A	26	New End Square	London	NW3 1LS
Flat D	26	New End Square	London	NW3 1LS
Flat E	26	New End Square	London	NW3 1LS
Flat F	26	New End Square	London	NW3 1LS
Flat B	26	New End Square	London	NW3 1LS
Flat C	26	New End Square	London	NW3 1LS
	28	New End Square	London	NW3 1LS
	30	New End Square	London	NW3 1LS
Flat Ground And 1st Floor	32	New End Square	London	NW3 1LS
Flat 2nd And 3rd Floor	32	New End Square	London	NW3 1LS
	34	New End Square	London	NW3 1LS
	10-			
	12	New End Square	London	NW3 1LN
	4	North End	London	NW3 7HL
	6	North End	London	NW3 7HL
	8	North End	London	NW3 7HL
	10	North End	London	NW3 7HL
	12	North End	London	NW3 7HL
	17	North End	London	NW3 7HR
	19	North End	London	NW3 7HR
	20	North End	London	NW3 7HR
	21	North End	London	NW3 7HR
	27	North End	London	NW3 7HN
	29	North End	London	NW3 7HN
	6A	North End	London	NW3 7HL

	Wildwood Cottage		North End	London	NW3 7HR
	Annexe				
	Cedar Lodge	1	North End Avenue	London	NW3 7HP
		3	North End Avenue	London	NW3 7HP
Flat 1st Floor	Brandon House		North End Avenue	London	NW3 7HP
Flat 2nd Floor	Brandon House		North End Avenue	London	NW3 7HP
Flat Ground					
Floor	Brandon House		North End Avenue	London	NW3 7HP
	Northgate		North End Avenue	London	NW3 7HP
	Northstead		North End Avenue	London	NW3 7HP
The Annex	Pitt House		North End Avenue	London	NW3 7HP
The Studio	Pitt House		North End Avenue	London	NW3 7HP
	Pitt House		North End Avenue	London	NW3 7HP
Brick Leaf					
House	Terrace House		North End Avenue	London	NW3 7HP
	The Lodge		North End Avenue	London	NW3 7HP
Flat Ground					
Floor	Elmwood		North End Way	London	NW3 7HE
Flat 1st Floor	Elmwood		North End Way	London	NW3 7HE
Garden Flat	Elmwood		North End Way	London	NW3 7HE
Flat 4	The Limes		North End Way	London	NW3 7HG
Flat 1	The Limes		North End Way	London	NW3 7HG
Flat 2	The Limes		North End Way	London	NW3 7HG
Flat 3	The Limes		North End Way	London	NW3 7HG
	5 The Village		North End Way	London	NW3 7HA
	3 The Village		North End Way	London	NW3 7HA
	2 The Village		North End Way	London	NW3 7HA
Flat 2		1	Oak Hill Park	London	NW3 7LB
Flat 4		1	Oak Hill Park	London	NW3 7LB
Flat 3		1	Oak Hill Park	London	NW3 7LB
Flat 1		1	Oak Hill Park	London	NW3 7LB
		4	Oak Hill Park	London	NW3 7LG
					NW3
	1 Tercelet Terrace		Oak Hill Park	London	7LW
					NW3
	2 Tercelet Terrace		Oak Hill Park	London	7LW
					NW3
	3 Tercelet Terrace		Oak Hill Park	London	7LW
					NW3
	4 Tercelet Terrace		Oak Hill Park	London	7LW
					NW3
	5 Tercelet Terrace		Oak Hill Park	London	7LW
	The Cottage		Oak Hill Park	London	NW3 7LG
	Weeping Ash		Oak Hill Park	London	NW3 7LP
		1	Oak Hill Park Mews	London	NW3 7LH
		2	Oak Hill Park Mews	London	NW3 7LH
		3	Oak Hill Park Mews	London	NW3 7LH
		4	Oak Hill Park Mews	London	NW3 7LH
		5	Oak Hill Park Mews	London	NW3 7LH
		6	Oak Hill Park Mews	London	NW3 7LH
		7	Oak Hill Park Mews	London	NW3 7LH
		8	Oak Hill Park Mews	London	NW3 7LH
		1	Oak Hill Way	London	NW3 7LR

	Combe Edge	4	Oak Hill Way	London	NW3 7LR
		1	Old Brewery Mews	London	NW3 1PZ
		3	Old Brewery Mews	London	NW3 1PZ
		4	Old Brewery Mews	London	NW3 1PZ
		5	Old Brewery Mews	London	NW3 1PZ
		6	Old Brewery Mews	London	NW3 1PZ
		7	Old Brewery Mews	London	NW3 1PZ
		8	Old Brewery Mews	London	NW3 1PZ
		9	Old Brewery Mews	London	NW3 1PZ
		10	Old Brewery Mews	London	NW3 1PZ
		11	Old Brewery Mews	London	NW3 1PZ
		12	Old Brewery Mews	London	NW3 1PZ
Flat 1		1A	Old Brewery Mews	London	NW3 1PZ
Flat 3		1A	Old Brewery Mews	London	NW3 1PZ
Flat 2		1A	Old Brewery Mews	London	NW3 1PZ
		1	Oriel Court	London	NW3 6TG
		2	Oriel Court	London	NW3 6TG
		3	Oriel Court	London	NW3 6TG
		4	Oriel Court	London	NW3 6TG
		5	Oriel Court	London	NW3 6TG
					NW3
		1	Parfitt Close	London	7HW
					NW3
		2	Parfitt Close	London	7HW
		3	Perrin's Court	London	NW3 1QS
		5	Perrin's Court	London	NW3 1QS
		1	Perrin's Lane	London	NW3 1QY
Flat A		1	Perrin's Lane	London	NW3 1QY
		2	Perrin's Lane	London	NW3 1QY
		3	Perrin's Lane	London	NW3 1QY
Flat 1st And 2nd Floor		4	Perrin's Lane	London	NW3 1QY
		5	Perrin's Lane	London	NW3 1QY
		6	Perrin's Lane	London	NW3 1QY
		7	Perrin's Lane	London	NW3 1QY
		9	Perrin's Lane	London	NW3 1QY
		11	Perrin's Lane	London	NW3 1QY
		13	Perrin's Lane	London	NW3 1QY
		16	Perrin's Walk	London	NW3 6TH
		20	Perrin's Walk	London	NW3 6TH
		21	Perrin's Walk	London	NW3 6TH
		22	Perrin's Walk	London	NW3 6TH
		23	Perrin's Walk	London	NW3 6TH
		25	Perrin's Walk	London	NW3 6TH
		26	Perrin's Walk	London	NW3 6TH
		27	Perrin's Walk	London	NW3 6TH
		29	Perrin's Walk	London	NW3 6TH
		1	Pilgrim's Lane	London	NW3 1SJ
		2	Pilgrim's Lane	London	NW3 1SL
		3	Pilgrim's Lane	London	NW3 1SJ
		4	Pilgrim's Lane	London	NW3 1SL
		5	Pilgrim's Lane	London	NW3 1SJ
		6	Pilgrim's Lane	London	NW3 1SL
Maisonette Basement Ground And 1st Floor					
		8	Pilgrim's Lane	London	NW3 1SL
Maisonette 2nd And 3rd Floor		8	Pilgrim's Lane	London	NW3 1SL

	10	Pilgrim's Lane	London	NW3 1SL
	11	Pilgrim's Lane	London	NW3 1SJ
	12	Pilgrim's Lane	London	NW3 1SN
	14	Pilgrim's Lane	London	NW3 1SN
	16	Pilgrim's Lane	London	NW3 1SN
	18	Pilgrim's Lane	London	NW3 1SN
	20	Pilgrim's Lane	London	NW3 1SN
Flat Top Floor Rear	22	Pilgrim's Lane	London	NW3 1SN
Entrance Flat	22	Pilgrim's Lane	London	NW3 1SN
Flat 1st Floor Front	22	Pilgrim's Lane	London	NW3 1SN
Flat 1st Floor Rear	22	Pilgrim's Lane	London	NW3 1SN
Flat Top Floor Front	22	Pilgrim's Lane	London	NW3 1SN
	22	Pilgrim's Lane	London	NW3 1SN
Garden Flat	22	Pilgrim's Lane	London	NW3 1SN
	24	Pilgrim's Lane	London	NW3 1SN
Flat 4	25	Pilgrim's Lane	London	NW3 1SX
Flat 3	25	Pilgrim's Lane	London	NW3 1SX
Flat 2	25	Pilgrim's Lane	London	NW3 1SX
Flat 1	25	Pilgrim's Lane	London	NW3 1SX
Maisonette Lower Ground And				
Ground And 1st Floor	26	Pilgrim's Lane	London	NW3 1SN
Flat 2nd Floor	26	Pilgrim's Lane	London	NW3 1SN
Flat 1st Floor	27	Pilgrim's Lane	London	NW3 1SX
Flat 3rd Floor	27	Pilgrim's Lane	London	NW3 1SX
Flat Ground Floor	27	Pilgrim's Lane	London	NW3 1SX
Flat 2nd Floor	27	Pilgrim's Lane	London	NW3 1SX
	28	Pilgrim's Lane	London	NW3 1SN
Flat B	29	Pilgrim's Lane	London	NW3 1SX
Flat C	29	Pilgrim's Lane	London	NW3 1SX
Flat D	29	Pilgrim's Lane	London	NW3 1SX
Flat A	29	Pilgrim's Lane	London	NW3 1SX
	30	Pilgrim's Lane	London	NW3 1SN
	31	Pilgrim's Lane	London	NW3 1SX
	32	Pilgrim's Lane	London	NW3 1SN
	34	Pilgrim's Lane	London	NW3 1SN
	35	Pilgrim's Lane	London	NW3 1SS
	38	Pilgrim's Lane	London	NW3 1SN
	40	Pilgrim's Lane	London	NW3 1SN
	41	Pilgrim's Lane	London	NW3 1SS
	42	Pilgrim's Lane	London	NW3 1SN
	43	Pilgrim's Lane	London	NW3 1SS
Flat A	43	Pilgrim's Lane	London	NW3 1SS
	44	Pilgrim's Lane	London	NW3 1SN
	50	Pilgrim's Lane	London	NW3 1SN
	52	Pilgrim's Lane	London	NW3 1SN
	54	Pilgrim's Lane	London	NW3 1SN
	56	Pilgrim's Lane	London	NW3 1SN
Flat 2nd And 3rd Floor	58	Pilgrim's Lane	London	NW3 1SN
Flat Basement And Ground Floor	58	Pilgrim's Lane	London	NW3 1SN
Flat Ground Floor	60	Pilgrim's Lane	London	NW3 1SN
Flat 2nd Floor	60	Pilgrim's Lane	London	NW3 1SN
Flat 3rd Floor	60	Pilgrim's Lane	London	NW3 1SN
Flat 1st Floor	60	Pilgrim's Lane	London	NW3 1SN
Basement Flat	60	Pilgrim's Lane	London	NW3 1SN

Flat 1st 2nd And 3rd Floor	62	Pilgrim's Lane	London	NW3 1SN
Flat Ground Floor	62	Pilgrim's Lane	London	NW3 1SN
Basement Flat	62	Pilgrim's Lane	London	NW3 1SN
	64	Pilgrim's Lane	London	NW3 1SN
	66	Pilgrim's Lane	London	NW3 1SN
Flat Lower Ground Floor	2A	Pilgrim's Lane	London	NW3 1SL
Maisonette Ground 1st And 2nd Floor	2A	Pilgrim's Lane	London	NW3 1SL
Flat 3rd Floor	2A	Pilgrim's Lane	London	NW3 1SL
	2B	Pilgrim's Lane	London	NW3 1SL
	37-			
	39	Pilgrim's Lane	London	NW3 1SS
	5A	Pilgrim's Lane	London	NW3 1SJ
	7A	Pilgrim's Lane	London	NW3 1SJ
Flat A	1	Pond Street	London	NW3 2PN
Flat B	1	Pond Street	London	NW3 2PN
	1	Pond Street	London	NW3 2PN
	3	Pond Street	London	NW3 2PN
	5C	Pond Street	London	NW3 2PN
	2	Prince Arthur Mews	London	NW3 1RD
	3	Prince Arthur Mews	London	NW3 1RD
	4	Prince Arthur Mews	London	NW3 1RD
	5	Prince Arthur Mews	London	NW3 1RD
	6	Prince Arthur Mews	London	NW3 1RD
	7	Prince Arthur Mews	London	NW3 1RD
	8	Prince Arthur Mews	London	NW3 1RD
	9	Prince Arthur Mews	London	NW3 1RD
	1	Redington Road	London	NW3 7QX
				NW3
	2A	Redington Road	London	7RG
Mews House	2	Rosslyn Hill	London	NW3 1PH
Flat 2A	2	Rosslyn Hill	London	NW3 1PH
Flat 2B	2	Rosslyn Hill	London	NW3 1PH
Flat 1	2	Rosslyn Hill	London	NW3 1PH
Flat 2	2	Rosslyn Hill	London	NW3 1PH
Flat 3	2	Rosslyn Hill	London	NW3 1PH
Flat 4	2	Rosslyn Hill	London	NW3 1PH
Flat 5	2	Rosslyn Hill	London	NW3 1PH
Flat 2	4	Rosslyn Hill	London	NW3 1PH
Flat 3	4	Rosslyn Hill	London	NW3 1PH
Flat 1	4	Rosslyn Hill	London	NW3 1PH
Flat 6	4	Rosslyn Hill	London	NW3 1PH
Flat 4	4	Rosslyn Hill	London	NW3 1PH
Flat 5	4	Rosslyn Hill	London	NW3 1PH
Flat 3	6	Rosslyn Hill	London	NW3 1PH
Flat 1	6	Rosslyn Hill	London	NW3 1PH
Flat 6	6	Rosslyn Hill	London	NW3 1PH
Flat 4	6	Rosslyn Hill	London	NW3 1PH
Flat 5	6	Rosslyn Hill	London	NW3 1PH
Flat 3	8	Rosslyn Hill	London	NW3 1PH
Flat 8	8	Rosslyn Hill	London	NW3 1PH
Flat 5	8	Rosslyn Hill	London	NW3 1PH
Flat 4	8	Rosslyn Hill	London	NW3 1PH
Flat 7	8	Rosslyn Hill	London	NW3 1PH
Flat 9	8	Rosslyn Hill	London	NW3 1PH

Flat 6	8	Rosslyn Hill	London	NW3 1PH
Flat 2	8	Rosslyn Hill	London	NW3 1PH
Flat B	8	Rosslyn Hill	London	NW3 1PH
Flat A	10	Rosslyn Hill	London	NW3 1PH
	10	Rosslyn Hill	London	NW3 1PH
	14	Rosslyn Hill	London	NW3 1PF
	16	Rosslyn Hill	London	NW3 1PD
	30	Rosslyn Hill	London	NW3 1NH
	42	Rosslyn Hill	London	NW3 1NH
	60	Rosslyn Hill	London	NW3 1ND
Flat 1st Floor	30A	Rosslyn Hill	London	NW3 1NH
Flat 2nd Floor	30A	Rosslyn Hill	London	NW3 1NH
Flat 3rd Floor	30A	Rosslyn Hill	London	NW3 1NH
	5	Rosslyn Mews	London	NW3 1NN
	9	Rosslyn Mews	London	NW3 1NN
	10	Rosslyn Mews	London	NW3 1NN
	12	Rosslyn Mews	London	NW3 1NN
Flat B	14	Rosslyn Mews	London	NW3 1NN
Flat A	14	Rosslyn Mews	London	NW3 1NN
Flat B	1	Rudall Crescent	London	NW3 1RR
Flat A	1	Rudall Crescent	London	NW3 1RR
Flat C	1	Rudall Crescent	London	NW3 1RR
	2	Rudall Crescent	London	NW3 1RS
	3	Rudall Crescent	London	NW3 1RR
Flat 1st Floor	4	Rudall Crescent	London	NW3 1RS
Flat 2nd Floor	4	Rudall Crescent	London	NW3 1RS
Flat Ground Floor	4	Rudall Crescent	London	NW3 1RS
Flat A	5	Rudall Crescent	London	NW3 1RR
Flat B	5	Rudall Crescent	London	NW3 1RR
	6	Rudall Crescent	London	NW3 1RS
	7	Rudall Crescent	London	NW3 1RR
	9	Rudall Crescent	London	NW3 1RR
	10	Rudall Crescent	London	NW3 1RS
	11	Rudall Crescent	London	NW3 1RR
	13	Rudall Crescent	London	NW3 1RR
	15	Rudall Crescent	London	NW3 1RR
	17	Rudall Crescent	London	NW3 1RR
	19	Rudall Crescent	London	NW3 1RR
	21	Rudall Crescent	London	NW3 1RR
Flat 1	23	Rudall Crescent	London	NW3 1RR
Flat 2	23	Rudall Crescent	London	NW3 1RR
Flat Ground Floor	23	Rudall Crescent	London	NW3 1RR
Flat 1st and 2nd Floor Rear	25	Rudall Crescent	London	NW3 1RR
Flat 1st and 2nd Floor Front	25	Rudall Crescent	London	NW3 1RR
Flat Ground Floor	25	Rudall Crescent	London	NW3 1RR
	27	Rudall Crescent	London	NW3 1RR
	29	Rudall Crescent	London	NW3 1RR
	31	Rudall Crescent	London	NW3 1RR
	33	Rudall Crescent	London	NW3 1RR
	35	Rudall Crescent	London	NW3 1RR
	37	Rudall Crescent	London	NW3 1RR
	39	Rudall Crescent	London	NW3 1RR
	41	Rudall Crescent	London	NW3 1RR
	43	Rudall Crescent	London	NW3 1RR

Penn House

2 And A Half	45	Rudall Crescent	London	NW3 1RR
	47	Rudall Crescent	London	NW3 1RR
	25A	Rudall Crescent	London	NW3 1RR
		Rudall Crescent	London	NW3 1RS
	1	Sandy Road	London	NW3 7EY
	2	Sandy Road	London	NW3 7EY
	3	Sandy Road	London	NW3 7EY
	7	Sandy Road	London	NW3 7EY
Ambridge Cottage Bay Tree Cottage Corner House Sandy House The Rook West House	8	Sandy Road	London	NW3 7EY
		Sandy Road	London	NW3 7EY
		Sandy Road	London	NW3 7EY
		Sandy Road	London	NW3 7EY
		Sandy Road	London	NW3 7EY
		Sandy Road	London	NW3 7EY
		Sandy Road	London	NW3 7EY
		Sandy Road	London	NW3 7EY
	75	South End Road	London	NW3 2RJ
	83	South End Road	London	NW3 2RJ
	85	South End Road	London	NW3 2RJ
	87	South End Road	London	NW3 2RJ
	89	South End Road	London	NW3 2RJ
	91	South End Road	London	NW3 2RJ
	93	South End Road	London	NW3 2RJ
	95	South End Road	London	NW3 2RJ
	101	South End Road	London	NW3 2RJ
	1	Spedan Close	London	NW3 7XF
	2	Spedan Close	London	NW3 7XF
	3	Spedan Close	London	NW3 7XF
	4	Spedan Close	London	NW3 7XF
	5	Spedan Close	London	NW3 7XF
	6	Spedan Close	London	NW3 7XF
	7	Spedan Close	London	NW3 7XF
	8	Spedan Close	London	NW3 7XF
	9	Spedan Close	London	NW3 7XF
	10	Spedan Close	London	NW3 7XF
	11	Spedan Close	London	NW3 7XF
	12	Spedan Close	London	NW3 7XF
	13	Spedan Close	London	NW3 7XF
	14	Spedan Close	London	NW3 7XF
	15	Spedan Close	London	NW3 7XF
	16	Spedan Close	London	NW3 7XF
	17	Spedan Close	London	NW3 7XF
	18	Spedan Close	London	NW3 7XF
	19	Spedan Close	London	NW3 7XF
	20	Spedan Close	London	NW3 7XF
	21	Spedan Close	London	NW3 7XF
	22	Spedan Close	London	NW3 7XF
	23	Spedan Close	London	NW3 7XF
	24	Spedan Close	London	NW3 7XF
	25	Spedan Close	London	NW3 7XF
	26	Spedan Close	London	NW3 7XF
	27	Spedan Close	London	NW3 7XF
	28	Spedan Close	London	NW3 7XF
	29	Spedan Close	London	NW3 7XF

		30	Spedan Close	London	NW3 7XF
		31	Spedan Close	London	NW3 7XF
		32	Spedan Close	London	NW3 7XF
		33	Spedan Close	London	NW3 7XF
		34	Spedan Close	London	NW3 7XF
		35	Spedan Close	London	NW3 7XF
		36	Spedan Close	London	NW3 7XF
		37	Spedan Close	London	NW3 7XF
		38	Spedan Close	London	NW3 7XF
		39	Spedan Close	London	NW3 7XF
		40	Spedan Close	London	NW3 7XF
		41	Spedan Close	London	NW3 7XF
		42	Spedan Close	London	NW3 7XF
		11	Squire's Mount	London	NW3 1ED
		12	Squire's Mount	London	NW3 1ED
	Angus House	13	Squire's Mount	London	NW3 1EG
		8	Stamford Close	London	NW3 1BE
		2	Streatley Place	London	NW3 1HP
		3	Streatley Place	London	NW3 1HP
	New End Cottage	10	Streatley Place	London	NW3 1HP
		14	Streatley Place	London	NW3 1HZ
		15	Streatley Place	London	NW3 1HZ
		16	Streatley Place	London	NW3 1HZ
		17	Streatley Place	London	NW3 1HZ
		18	Streatley Place	London	NW3 1HZ
		19	Streatley Place	London	NW3 1HZ
		14	The Mount	London	NW3 6SZ
		16	The Mount	London	NW3 6SZ
		17	The Mount	London	NW3 6SZ
Flat 2		18	The Mount	London	NW3 6ST
Flat 4		18	The Mount	London	NW3 6ST
Flat 5		18	The Mount	London	NW3 6ST
Flat 3		18	The Mount	London	NW3 6ST
Flat 1		18	The Mount	London	NW3 6ST
		22	The Mount	London	NW3 6ST
	The Studio		The Mount	London	NW3 6SZ
		9	The Mount Square	London	NW3 6SY
		1	Trinity Close	London	NW3 1SD
		2	Trinity Close	London	NW3 1SD
		3	Trinity Close	London	NW3 1SD
		5	Upper Terrace	London	NW3 6RH
	Grove End		Upper Terrace	London	NW3 6RP
	Ashdown		Vale Of Health	London	NW3 1BB
	Beechey Cottage		Vale Of Health	London	NW3 1AN
	Blossom Villa		Vale Of Health	London	NW3 1AX
Flat 3	Byron Villas		Vale Of Health	London	NW3 1AR
Flat 4	Byron Villas		Vale Of Health	London	NW3 1AR
	Faircroft		Vale Of Health	London	NW3 1AN
	Fig Tree Cottage		Vale Of Health	London	NW3 1AX
	Fleet House		Vale Of Health	London	NW3 1AZ
	Greenmoor		Vale Of Health	London	NW3 1AZ
10-11 Flat 2nd And 3rd Floor					NW3
1	Heath Villas		Vale Of Health	London	1AW
	Heath Villas		Vale Of Health	London	NW3 1AU

2	Heath Villas	Vale Of Health	London	NW3 1AU
3	Heath Villas	Vale Of Health	London	NW3 1AU
4	Heath Villas	Vale Of Health	London	NW3 1AU
5	Heath Villas	Vale Of Health	London	NW3 1AU
6	Heath Villas	Vale Of Health	London	NW3 1AU
7	Heath Villas	Vale Of Health	London	NW3 1AU
8	Heath Villas	Vale Of Health	London	NW3 1AU
9	Heath Villas	Vale Of Health	London	NW3 1AU
10	Heath Villas	Vale Of Health	London	NW3 1AP
11	Heath Villas	Vale Of Health	London	NW3 1AS
12	Heath Villas	Vale Of Health	London	NW3 1AR
10 Garden Flat	Heath Villas	Vale Of Health	London	NW3 1AS
	Heathdene	Vale Of Health	London	NW3 1BB
Flat 1st Part And Upper Floor	Heathland Studio	Vale Of Health	London	NW3 1AZ
Flat Ground And Part 1st Floor	Heathland Studio	Vale Of Health	London	NW3 1AZ
	Heathurst	Vale Of Health	London	NW3 1AN
	Hillview	Vale Of Health	London	NW3 1AN
	Hollycot	Vale Of Health	London	NW3 1BB
	Lakeview	Vale Of Health	London	NW3 1AN
Flat Lower Ground Floor	Lakeview	Vale Of Health	London	NW3 1AN
	Leasteps	Vale Of Health	London	NW3 1AN
	Manor Cottage	Vale Of Health	London	NW3 1BB
	Manor Lodge	Vale Of Health	London	NW3 1BB
	Milton Cottage	Vale Of Health	London	NW3 1AX
	Silverdale	Vale Of Health	London	NW3 1AN
Flat 7	Spencer House	Vale Of Health	London	NW3 1AS
	Sydney Cottage	Vale Of Health	London	NW3 1AX
1	The Gables	Vale Of Health	London	NW3 1AX
2	The Gables	Vale Of Health	London	NW3 1AX
3	The Gables	Vale Of Health	London	NW3 1AX
4	The Gables	Vale Of Health	London	NW3 1AZ
5	The Gables	Vale Of Health	London	NW3 1AN
6	The Gables	Vale Of Health	London	NW3 1AN
	The Garden House	Vale Of Health	London	NW3 1AN
Flat A	Upfleet	Vale Of Health	London	NW3 1AN
Flat B	Upfleet	Vale Of Health	London	NW3 1AN
Flat C	Upfleet	Vale Of Health	London	NW3 1AN
	Willow Lodge	Vale Of Health	London	NW3 1AX
	Woodbine Cottage	Vale Of Health	London	NW3 1AX
		1 Well Road	London	NW3 1LJ
Flat Ground Floor		2 Well Road	London	NW3 1LJ
Upper Flat		2 Well Road	London	NW3 1LJ
		3 Well Road	London	NW3 1LJ
		4 Well Road	London	NW3 1LJ
		5 Well Road	London	NW3 1LH
Flat B		6 Well Road	London	NW3 1LH
Flat A		6 Well Road	London	NW3 1LH
Flat 1st Floor		7 Well Road	London	NW3 1LH
Flat Lower Ground And Ground Floor		7 Well Road	London	NW3 1LH

Flat 2nd Floor	7	Well Road	London	NW3 1LH
	8	Well Road	London	NW3 1LH
	9	Well Road	London	NW3 1LH
	10	Well Road	London	NW3 1LH
Flat A	11	Well Road	London	NW3 1LH
	11	Well Road	London	NW3 1LH
	12	Well Road	London	NW3 1LH
	13	Well Road	London	NW3 1LH
Garden Flat	13	Well Road	London	NW3 1LH
	14	Well Road	London	NW3 1LH
	15	Well Road	London	NW3 1LH
	21	Well Road	London	NW3 1LH
	22	Well Road	London	NW3 1LH
The Garden House	24	Well Road	London	NW3 1LH
Flat Basement And Ground Floor	1A	Well Road		NW3 1LJ
	2A	Well Road	London	NW3 1LJ
Weatherall Lodge Wellmount Cottage		Well Road	London	NW3 1LJ
1 Wellmount Studio		Well Road	London	NW3 1LL
2 Wellmount Studio		Well Road	London	NW3 1LL
	4	Well Walk	London	NW3 1LD
	6	Well Walk	London	NW3 1LD
	8	Well Walk	London	NW3 1LD
	10	Well Walk	London	NW3 1LD
Flat 2nd And Attic Floor	12	Well Walk	London	NW3 1LD
Flat 1st Floor	12	Well Walk	London	NW3 1LD
Flat Ground Floor	12	Well Walk	London	NW3 1LD
Flat 2nd Floor	14	Well Walk	London	NW3 1LD
Flat 1st Floor	14	Well Walk	London	NW3 1LD
Flat Ground Floor	14	Well Walk	London	NW3 1LD
Flat D	15	Well Walk	London	NW3 1BY
Flat A	15	Well Walk	London	NW3 1BY
Flat B	15	Well Walk	London	NW3 1BY
Flat C	15	Well Walk	London	NW3 1BY
	16	Well Walk	London	NW3 1LD
Flat D	17	Well Walk	London	NW3 1BY
Flat A	17	Well Walk	London	NW3 1BY
Flat B	17	Well Walk	London	NW3 1BY
Flat C	17	Well Walk	London	NW3 1BY
	18	Well Walk	London	NW3 1LD
Flat Lower Ground Floor	20	Well Walk	London	NW3 1LD
	20	Well Walk	London	NW3 1LD
	22	Well Walk	London	NW3 1LD
	24	Well Walk	London	NW3 1LD
Lower Flat	26	Well Walk	London	NW3 1LD
Upper Flat	26	Well Walk	London	NW3 1LD
Flat 1	28	Well Walk	London	NW3 1LD
Flat 5	28	Well Walk	London	NW3 1LD
Flat 2	28	Well Walk	London	NW3 1LD
Flat 3	28	Well Walk	London	NW3 1LD
Flat 4	28	Well Walk	London	NW3 1LD
	29	Well Walk	London	NW3 1BY
	42	Well Walk	London	NW3 1BX

	44	Well Walk	London	NW3 1BX
Flat 3	48	Well Walk	London	NW3 1BT
Flat 1	48	Well Walk	London	NW3 1BT
Flat 2	48	Well Walk	London	NW3 1BT
Flat 4	48	Well Walk	London	NW3 1BT
Flat 5	48	Well Walk	London	NW3 1BT
	11-			
	13	Well Walk	London	NW3 1BY
	2A	Well Walk	London	NW3 1LD
	2B	Well Walk	London	NW3 1LD
Lower Wellside		Well Walk	London	NW3 1BT
Upper Wellside		Well Walk	London	NW3 1BT
Wellside		Well Walk	London	NW3 1BT
	1	White Bear Place	London	NW3 1LR
The Cottage		Whitestone Lane	London	NW3 1EA
Whitestone				
House		Whitestone Lane	London	NW3 1EA
	1	Wildwood Grove	London	NW3 7HU
	2	Wildwood Grove	London	NW3 7HU
	3	Wildwood Grove	London	NW3 7HU
	6	Wildwood Grove	London	NW3 7HU
	7	Wildwood Grove	London	NW3 7HU
	8	Wildwood Grove	London	NW3 7HU
	9	Wildwood Grove	London	NW3 7HU
	12	Wildwood Grove	London	NW3 7HU
	13	Wildwood Grove	London	NW3 7HU
	4-5	Wildwood Grove	London	NW3 7HU
	10-			
	11	Wildwood Grove	London	NW3 7HU
	1	Wildwood Terrace	London	NW3 7HT
	2	Wildwood Terrace	London	NW3 7HT
	3	Wildwood Terrace	London	NW3 7HT
	4	Wildwood Terrace	London	NW3 7HT
Flat A	4	Wildwood Terrace	London	NW3 7HT
	2	Willoughby Road	London	NW3 1SA
Flat C And G	3	Willoughby Road	London	NW3 1RP
Flat E And F	3	Willoughby Road	London	NW3 1RP
Flat D	3	Willoughby Road	London	NW3 1RP
Flat A	3	Willoughby Road	London	NW3 1RP
	4	Willoughby Road	London	NW3 1SA
Flat B	5	Willoughby Road	London	NW3 1RP
Flat A	5	Willoughby Road	London	NW3 1RP
Flat C	5	Willoughby Road	London	NW3 1RP
Flat Ground Floor	6	Willoughby Road	London	NW3 1SA
Flat 1st Floor	6	Willoughby Road	London	NW3 1SA
Flat 2nd Floor	6	Willoughby Road	London	NW3 1SA
Flat A	6	Willoughby Road	London	NW3 1SA
Flat C	7	Willoughby Road	London	NW3 1RP
Flat B	7	Willoughby Road	London	NW3 1RP
Flat 1st Floor	7	Willoughby Road	London	NW3 1RP
Flat A	7	Willoughby Road	London	NW3 1RP
Flat B	8	Willoughby Road	London	NW3 1SA
Flat D	8	Willoughby Road	London	NW3 1SA
Flat C	8	Willoughby Road	London	NW3 1SA
Flat A	8	Willoughby Road	London	NW3 1SA

Flat 1st Floor	9	Willoughby Road	London	NW3 1RT
Flat 2nd Floor	9	Willoughby Road	London	NW3 1RT
Flat Ground Floor	9	Willoughby Road		NW3 1RT
Flat 3rd Floor	9	Willoughby Road	London	NW3 1RT
	10	Willoughby Road	London	NW3 1SA
	11	Willoughby Road	London	NW3 1RT
Flat Basement And Ground Floor	12	Willoughby Road	London	NW3 1SA
Flat 1st And 2nd Floor	12	Willoughby Road	London	NW3 1SA
	13	Willoughby Road	London	NW3 1RT
Flat 4-5	14	Willoughby Road	London	NW3 1SA
Flat A	14	Willoughby Road	London	NW3 1SA
Flat 2	14	Willoughby Road	London	NW3 1SA
Flat 3	14	Willoughby Road	London	NW3 1SA
Flat 1	14	Willoughby Road	London	NW3 1SA
Flat 2	15	Willoughby Road	London	NW3 1RT
Flat 1	15	Willoughby Road	London	NW3 1RT
Flat 3	15	Willoughby Road	London	NW3 1RT
Flat A	16	Willoughby Road	London	NW3 1SA
Flat B	16	Willoughby Road	London	NW3 1SA
Flat 4	17	Willoughby Road	London	NW3 1RT
Flat 1	17	Willoughby Road	London	NW3 1RT
Flat 2	17	Willoughby Road	London	NW3 1RT
Flat 3	17	Willoughby Road	London	NW3 1RT
Flat A	18	Willoughby Road	London	NW3 1SA
Flat 2nd And 3rd Floor	18	Willoughby Road	London	NW3 1SA
	19	Willoughby Road	London	NW3 1RT
Flat A	20	Willoughby Road	London	NW3 1SA
	20	Willoughby Road	London	NW3 1SA
	21	Willoughby Road	London	NW3 1RT
Flat 2nd And 3rd Floor	22	Willoughby Road	London	NW3 1SA
Flat Ground Floor	22	Willoughby Road	London	NW3 1SA
Flat Lower Ground Floor	22	Willoughby Road	London	NW3 1SA
Flat 1st Floor	22	Willoughby Road	London	NW3 1SA
	24	Willoughby Road	London	NW3 1SA
	26	Willoughby Road	London	NW3 1SA
	28	Willoughby Road	London	NW3 1SA
	29	Willoughby Road	London	NW3 1RT
Flat 1	30	Willoughby Road	London	NW3 1RU
Flat 2	30	Willoughby Road	London	NW3 1RU
Flat 3	30	Willoughby Road	London	NW3 1RU
Flat 4	30	Willoughby Road	London	NW3 1RU
	31	Willoughby Road	London	NW3 1RT
	32	Willoughby Road	London	NW3 1RU
	33	Willoughby Road	London	NW3 1RT
	34	Willoughby Road	London	NW3 1RU
	36	Willoughby Road	London	NW3 1RU
	38	Willoughby Road	London	NW3 1RU
	42	Willoughby Road	London	NW3 1RU
	46	Willoughby Road	London	NW3 1RU
Flat 1st And 2nd Floor	48	Willoughby Road	London	NW3 1RU
Flat Ground Floor	48	Willoughby Road	London	NW3 1RU
Flat Lower Ground Floor	48	Willoughby Road	London	NW3 1RU
Basement Flat	50	Willoughby Road	London	NW3 1RU
Flat Ground 1st And 2nd Floor	50	Willoughby Road	London	NW3 1RU

	1A	Willoughby Road	London	NW3 1RP
	28A	Willoughby Road	London	NW3 1SA
	5	Willow Road	London	NW3 1TH
Flat A	6	Willow Road	London	NW3 1TH
Flat C	6	Willow Road	London	NW3 1TH
Flat B	6	Willow Road	London	NW3 1TH
Flat 5	7	Willow Road	London	NW3 1TH
Flat 3	7	Willow Road	London	NW3 1TH
Flat 4	7	Willow Road	London	NW3 1TH
The Coach House	7	Willow Road	London	NW3 1TH
Flat 1	7	Willow Road	London	NW3 1TH
Flat 2	7	Willow Road	London	NW3 1TH
	8	Willow Road	London	NW3 1TJ
	9	Willow Road	London	NW3 1TJ
	10	Willow Road	London	NW3 1TJ
	11	Willow Road	London	NW3 1TJ
	12	Willow Road	London	NW3 1TJ
	13	Willow Road	London	NW3 1TJ
	14	Willow Road	London	NW3 1TJ
	15	Willow Road	London	NW3 1TJ
Flat 1st And 2nd Floor	16	Willow Road	London	NW3 1TJ
Flat Ground Floor	16	Willow Road	London	NW3 1TJ
Flat A	17	Willow Road	London	NW3 1TJ
Flat B	17	Willow Road	London	NW3 1TJ
Flat D	17	Willow Road	London	NW3 1TJ
Flat C	17	Willow Road	London	NW3 1TJ
	18	Willow Road	London	NW3 1TJ
	19	Willow Road	London	NW3 1TJ
	20	Willow Road	London	NW3 1TJ
Flat Ground Floor	21	Willow Road	London	NW3 1TL
Flat 1st Floor	21	Willow Road	London	NW3 1TL
Flat 2nd Floor	21	Willow Road	London	NW3 1TL
Flat A	21	Willow Road	London	NW3 1TL
	22	Willow Road	London	NW3 1TL
Flat C	23	Willow Road	London	NW3 1TL
Flat A	23	Willow Road	London	NW3 1TL
Flat B	23	Willow Road	London	NW3 1TL
	24	Willow Road	London	NW3 1TL
Flat A	25	Willow Road	London	NW3 1TL
	25	Willow Road	London	NW3 1TL
Flat 1	26	Willow Road	London	NW3 1TL
Flat 2	26	Willow Road	London	NW3 1TL
Flat 4	26	Willow Road	London	NW3 1TL
Flat 3	26	Willow Road	London	NW3 1TL
Flat 5	26	Willow Road	London	NW3 1TL
Flat 2	27	Willow Road	London	NW3 1TL
Flat 3	27	Willow Road	London	NW3 1TL
Flat 4	27	Willow Road	London	NW3 1TL
Flat 1	27	Willow Road	London	NW3 1TL
	28	Willow Road	London	NW3 1TL
Basement Flat	28	Willow Road	London	NW3 1TL
	29	Willow Road	London	NW3 1TL
Flat 3	30	Willow Road	London	NW3 1TL
Flat 2	30	Willow Road	London	NW3 1TL

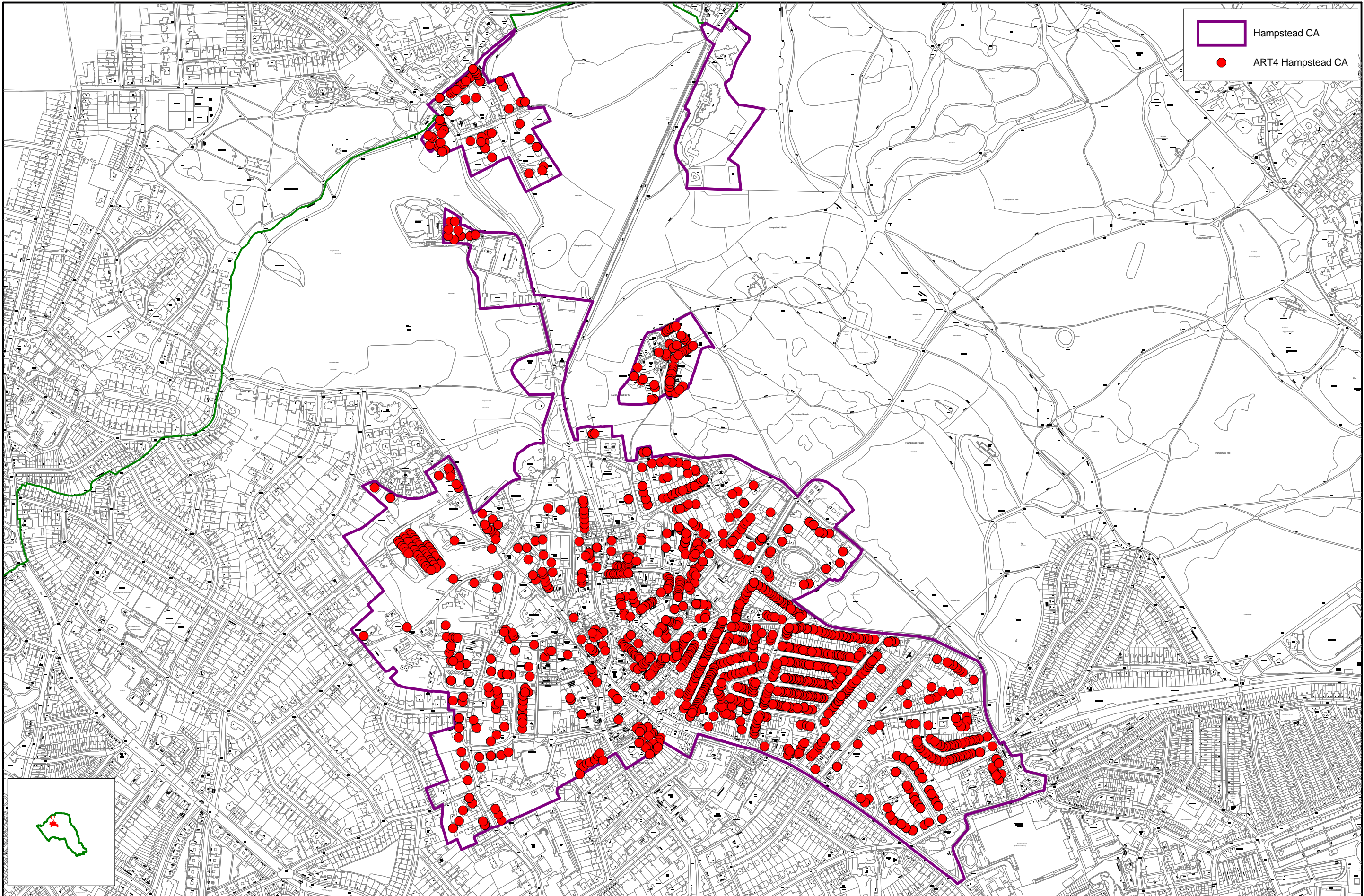
Flat A	30	Willow Road	London	NW3 1TL
Flat 2	31	Willow Road	London	NW3 1TL
Flat 3	31	Willow Road	London	NW3 1TL
Flat 4	31	Willow Road	London	NW3 1TL
Flat 1	31	Willow Road	London	NW3 1TL
	32	Willow Road	London	NW3 1TL
Flat A	32	Willow Road	London	NW3 1TL
	40	Willow Road	London	NW3 1TN
	42	Willow Road	London	NW3 1TS
Basement Flat	42	Willow Road	London	NW3 1TS
	43	Willow Road	London	NW3 1TS
	44	Willow Road	London	NW3 1TS
	45	Willow Road	London	NW3 1TS
Flat 2	46	Willow Road	London	NW3 1TS
Flat A	46	Willow Road	London	NW3 1TS
Flat 3	46	Willow Road	London	NW3 1TS
Flat 1	47	Willow Road	London	NW3 1TS
Flat 4	47	Willow Road	London	NW3 1TS
Flat A	47	Willow Road	London	NW3 1TS
	48	Willow Road	London	NW3 1TS
	49	Willow Road	London	NW3 1TS
	50	Willow Road	London	NW3 1TP
	51	Willow Road	London	NW3 1TP
	52	Willow Road	London	NW3 1TP
	53	Willow Road	London	NW3 1TP
	54	Willow Road	London	NW3 1TP
	57	Willow Road	London	NW3 1TP
	1	Windmill Hill	London	NW3 6RU
Flat Ground Floor	2	Windmill Hill	London	NW3 6RU
Flat 1st Floor	2	Windmill Hill	London	NW3 6RU
Flat 2nd Floor	2	Windmill Hill	London	NW3 6RU
Flat A	2	Windmill Hill	London	NW3 6RU
Flat A	3	Windmill Hill	London	NW3 6RU
	3	Windmill Hill	London	NW3 6RU
	4	Windmill Hill	London	NW3 6RU
	5	Windmill Hill	London	NW3 6RU
Flat A	6	Windmill Hill	London	NW3 6RU
	6	Windmill Hill	London	NW3 6RU
	7	Windmill Hill	London	NW3 6RU
Willow Cottage	14	Windmill Hill	London	NW3 6RT
	21	Windmill Hill	London	NW3 6RX
	22	Windmill Hill	London	NW3 6RX
Garden Cottage		Windmill Hill	London	NW3 6RT
	1	Yorkshire Grey Place	London	NW3 6UJ
	2	Yorkshire Grey Place	London	NW3 6UJ
	3	Yorkshire Grey Place	London	NW3 6UJ

DATED this first day of September Two thousand and ten

Signed:

The Common Seal of the Mayor)
And Burgesses of the London)
Borough of Camden was hereunto)
Affixed by Order:-)

.....
Authorised Signatory



Article 4 Hampstead CA



This map is based upon Ordnance Survey material with the permission of Ordnance Survey on behalf of the Controller of Her Majesty's Stationery Office © Crown copyright. Unauthorised reproduction infringes Crown copyright and may lead to prosecution or civil proceedings. (Licence Number: 100019726) (Year: 2009).

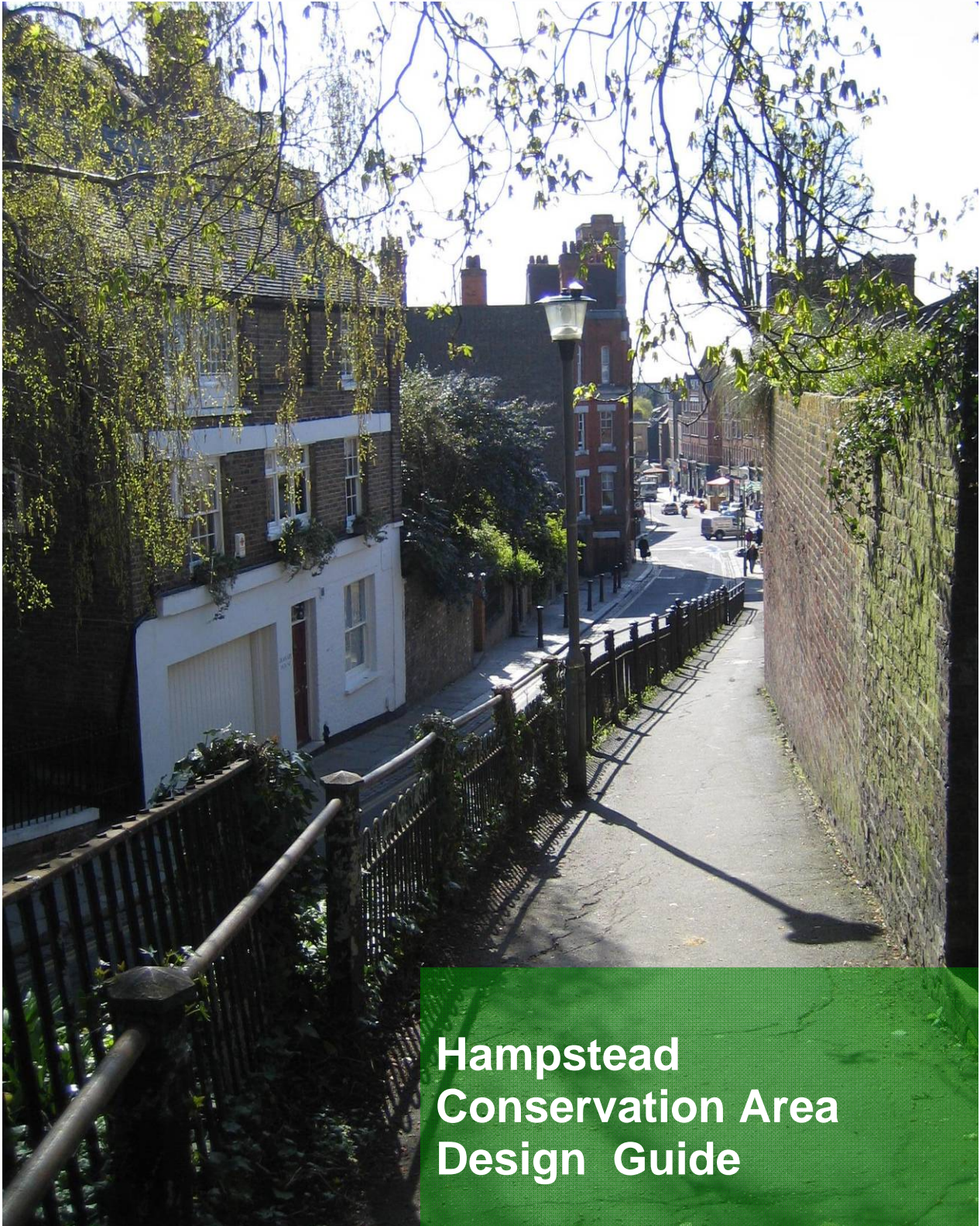
Scale 1: Not Usable Scale

Print Date: 29/06/2010

Printed By: L.Small



Map Ref No: c03667

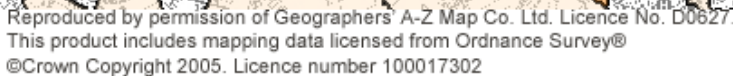


Hampstead Conservation Area Design Guide

Advice on alterations and repair
following the introduction of an
Article 4(1) Direction

An Article 4(1) Direction was approved by the Secretary of State on [insert date] on most of the properties in the Hampstead Conservation Area. This means that additional planning controls have been introduced and some types of work which previously did not need planning permission now do.

and houses converted to flats. It seeks to prevent harmful works taking place and to ensure that Hampstead Conservation Area keeps its historic character and appearance and remains an attractive and desirable place to live into the future.



are suitable and what will require planning permission. It encourages owners and occupiers to undertake sensitive repairs and to reinstate historic features where they have been lost. Even minor changes to the appearance of properties can destroy the character and appearance of the area, and potentially lower the value of the property, so the basic principle underlying all this advice is to:

- keep your historic property in good repair
- retain and repair historic features rather than replace them.

**THERE IS CURRENTLY NO FEE FOR APPLICATIONS MADE AS A
RESULT OF THE ARTICLE 4(1) DIRECTION.**

Alterations which are not carried out in accordance with this Guide may be subject to enforcement action by the Council.

Why is Hampstead special?

Hampstead was one of the first ever conservation areas to be created following the Town & Country Planning Act in 1968. It is an area of great appeal and diverse historic character, which local people have long campaigned to preserve, for all to enjoy.

Hampstead retains much of its 18th century village charm, with narrow passageways, steep lanes and small squares at the heart of the conservation area. The surrounding streets were largely developed in the 19th century, and these grand red and yellow brick properties retain many of their attractive Arts & Crafts features such as original windows and doors, decorative details, mature green front gardens, ornate boundary walls and railings.

The diversity of architectural style and consistently high quality in design is what makes Hampstead special, while its proximity to Hampstead Heath, lush gardens and street trees all contribute strongly to the leafy village character.



Additional planning controls that have been introduced

The following works to the fronts of properties, and the sides of properties which face the road now need planning permission:

1. Any works to enlarge, alter or improve your property including replacing part or all of any window or door, and any works which alter the appearance of decorative features, including their removal.
2. Alterations to porches – this includes enclosing the porch or altering the way it looks.
3. Painting the front of a property if it will differ from the traditional surface treatment. You do not need to apply for planning permission to repaint your property if it is already painted or covered in 'stucco' or a traditional render finish, provided it remains the same colour.
4. Additions or alterations to the roof or chimney, including the installation of a roof-light or solar panel
5. Installation of a flue or soil and vent pipe at the front of a property
6. Erecting, altering or demolishing a gate, wall or fence at the front of a property

7. Making, enlarging, improving or altering a hard surface at the front of a property

The following sections give more information on each of these categories.

What does 'like-for-like' mean?

If existing features are beyond cost-effective repair you may wish to replace them with like-for-like replacements. Like-for-like replacement and repair does not need planning permission.

Like-for-like approaches are those that:

- match in materials, colour and surface finish (e.g. bricks and mortar)
- have the same dimensions and
- have the same pattern and detailed profile
- replicate original details such as window catches, handles, pulleys, etc (these can sometimes be transferred from the old feature to the new).

For example if you are rebuilding sections of boundary wall to match the existing, using matching bricks, matching mortar and matching the profile of the mortar pointing, this will not need planning permission.

Replacement windows should match the glazing bar / frame / window sill dimensions and way of openings - for example vertically sliding sash windows or side- or top-hinged casements can be replaced like-for-like without planning permission.

**THERE IS CURRENTLY NO FEE FOR APPLICATIONS MADE AS A
RESULT OF THE ARTICLE 4(1) DIRECTION.**

1. Enlargement, alteration or improvement

1.1 Windows and doors

Historic windows and doors can last indefinitely if they are properly maintained by the homeowner with the occasional assistance of a joiner. It is also cheaper in the long run to repair timber features than to replace them because the replacements will have a shorter life span than well maintained historic joinery. Untraditional replacement windows and doors are the biggest threat to property values in conservation areas (source: English Heritage).

Replacing original windows on the front elevation (or side elevations where these front the street) now needs planning permission.



1.2 Reducing heat loss through historic windows and doors

Simple measures such as heavy curtains and blinds will retain heat, while mending cracks and eliminating gaps in your windows and doors and fitting draught-strips and brushes (available from any DIY store), can reduce air loss by as much as 86%. Secondary glazing used with well-fitting shutters can cut heat loss by 60%. When fitting secondary glazing you should ensure that the meeting rails on the secondary glazing units match the location of the glazing bar / meeting rail of the existing windows. *None of these works need planning permission.* Other measures to reduce energy use such roof insulation, and turning the central heating down by one degree, will also help make savings, as will the installation of a high-efficiency condensing boiler with individual thermostatic controls on each radiator.



1.3 Double glazing

The replacement of historic Victorian or Edwardian windows with untraditional modern alternatives is likely to detract from the appearance and reduce the value of your home so you should think carefully before replacing your original windows. Some traditional glazing patterns (see above and left) are difficult to replicate with thicker double glazed units, so repair, rather than replacement, should always be the first choice. Large paned sash or casement windows may be possible to double glaze, either in the existing frame, or in new joinery, in a way that replicates the appearance of the original 'like for like'. *This now needs planning permission.* There are a number of specialist companies who can undertake this work (see: Key Contacts).



1.4 Decorative glass has an important ornamental role in addition to letting light into the building; it may be stained, etched held together with lead 'comes' or a combination of all three. It should always be retained and repaired and specialist advice should be sought (see: Key Contacts). *Its removal and replacement on front elevations (or side elevations where these front the street) needs planning permission and will be resisted.*



Like-for-like replacement

If your existing features such as windows and doors are beyond cost-effective repair you may wish to replace them with like-for-like replacements.

You do not need planning permission to do this if the new window or door:

- *matches in materials*
- *has the same pattern and profile of glazing bars / frame*
- *has the same glazing bar / frame / window cill dimensions and opens in the same way (for example vertically sliding sash windows or side- or top-hinged casements).*
- *any details should be replicated and original catches, handles, pulleys, etc, should where possible be transferred to the new window or door.*



1.5 Decorative Details often occur around the windows and doors of historic properties, and became more flamboyant (see above) in the latter half of the 19th century. They may include columns, mouldings and rubbed brickwork and render decoration particularly to porches, tile-hanging, render panels and other ornate brick and terracotta features. The stately house pictured above has an imposing double-height bay window with window mullions (vertical bars) in render to resemble stone and a very ornate 'crow-stepped' gable decorated in brick and render; in a Medieval Tudor 'revival' style. Decorative details are very important to the character of Hampstead and should be preserved and reinstated where lost or damaged. *Their removal now needs planning permission and will be resisted.*



2. Alterations to porches



Porches are an often overlooked but are an integral feature in the architectural design and historic appeal of your property. Finely detailed brick, timber and ironwork porches or porch hoods, sometimes with tiled roofs, are also used to great effect in the conservation area. Depending on the date of your property you may have a grander porch or 'portico' with columns,

popular in the mid 19th century as a result of a revival in Classical antiquity, or a humbler arched version (see above), or a simple timber structure (see below) which dates the property in the latter half of the decade. The porch pictured right is a charming and unusual example of the 'Gothick' revival style from the mid-20th century, with its ogee capped roof and filigree carving.



Adding a new porch or altering existing porches or porticos on front elevations (or side elevations where this fronts the street) now needs planning permission and will be resisted.

3. Painting the front of a property

3.1 Brick-fronted Properties

Hampstead has many attractive properties fronted in red or yellow London stock brick, which give a warm and cheerful character to individual streets when combined with traditional details such as multi-paned windows and prominent roofs. Unpainted brickwork should never be painted over (even in a matching colour).



The painting over of unpainted brickwork on the front elevation (or side elevation where this fronts the street) now needs planning permission and will be resisted.

Where unpainted brickwork is combined with small sections of render on the frontage, the render should always be repaired in matching materials.

3.2 Stucco or render-fronted Properties

A small number of properties in Hampstead are finished in stucco - a type of render used to give brickwork the appearance of dressed stonework. Stucco was in vogue in the 1850s, and gives properties a grand appearance to compete with respectable West London suburbs like Belgravia and Kensington.

Stucco needs regular painting with traditional permeable paints such as Farrow & Ball or Naturepaint, unless it has never been painted in the past, in which case it should be left unpainted. Paint colours should match the other buildings in the block and should ideally conform to a traditional palette. *Repainting stucco does not need planning permission.*



4. Additions and alterations to the roof or chimney

Unaltered roofs and chimneys play an important role in defining the character of Hampstead. While some of the earliest 18th and 19th century properties – for example on Downshire Hill - are distinguished by roofs hidden behind tall parapets, the later brick-fronted properties have more prominent and decorative roofs – often low and sweeping, covering projecting bay



windows and porches or creating turrets. These are often covered in clay roof tiles as opposed to slate (as left, in Gainsborough Gardens). It is important to preserve these roof forms, materials and details as they contribute significantly to the character and quality of the area.

The following works now need planning permission on a roof slope or a side roof slope where it faces the street:

- *reroofing in a material which differs from the original or existing material*
- *the removal without re-instatement of any decorative details such as decorative ridge or hip tiles*
- *the installation of a rooflight (even if it is a flush “conservation” style roof light)*
- *the installation of a solar panel or other micro-generation equipment*
- *the alteration, demolition or partial demolition of a chimney.*

4.1 Solar panels and Micro-generation Equipment

Solar panels and micro-generation equipment such as wind turbines will need planning permission if they are to be installed on the front of a property or the side of a property which faces the road, and so less visible locations should be considered first. Passive energy efficiency measures should always be prioritised over the installation of renewable energy plant - hot water cylinders and pipework should be insulated with smart metering and thermostatic controls introduced to cut energy use. Energy efficient lighting and household appliances can also play a significant part in reducing household carbon emissions.

5. Installation of a flue, chimney or soil and vent pipe

Services such as flues (including for biomass boilers), soil and vent pipes and new chimneys should always be located on the side or rear elevation, so that the smart, public face of the building remains untouched. *New flues, chimneys or soil vent pipes now need planning permission on the front elevation (and sides where these front the street) and will be resisted.* Minor alterations such as the replacement of a cowl with one the same size or smaller does not need planning permission.



6. Walls, Railings, Fences, and Hedges

Unbroken runs of boundary walls to green front gardens are one of the most noticeable aspects of Hampstead's historic character. The traditional treatment of the boundary varies according to the date and style of property.

Most properties have traditional low brick walls with gate piers and occasional details picked out in stone or render. Often the simple, low boundary walls would originally have had dark-painted railings to cap them, so where historic railings survive they are very rare indeed and should never be removed, but sensitivity repaired, and reinstated where lost (see Key Contacts for repair specialists). Boundary walls, hedges and railings all help give the area its serene and respectable charm, and by restoring them where they have been

removed residents can restore the attractive qualities of the streetscape for residents and passers by.

The demolition of boundary walls and railings facing the street now needs planning permission and will be resisted.

Where boundary walls or railings have been lost or replaced in non-original materials or to different design we encourage residents to restore them to their original form. Weather-struck or bucket-handle pointing is unlikely to be original and is rarely appropriate. Cement mortar for pointing is also likely to be a later addition and can harm historic brickwork so we would encourage a lime based mortar for pointing. Hedges should be retained and replanted



a



where they are a feature of the streetscape. The like-for-like maintenance and repair of boundaries does not require planning permission.

7. Front Gardens

Green front gardens are vital not only in preserving the attractive, tranquil qualities of the conservation area, but also in providing wildlife corridors, enhancing biodiversity and reducing flood risk. Planting more

soft landscaping – grass, flowers, shrubs and small trees – in front gardens, and reinstating it where lost, helps to ensure that Hampstead remains a healthy, natural and beautiful place to live.



The creation of a hard surface at the front of a property, or the side of a property which faces the road, now needs planning permission and will be resisted.



Vegetation in front gardens should be retained and replanted where lost. Original tiled paths and landscaping materials such as York stone should be retained and repaired

Frequently Asked Questions

What about minor alterations?

Minor changes which do not detract from the character or appearance of your building such as painting your doors or windows and other periodic repairs such as the installation of a single light to the porch, or a burglar alarm box *do not need planning permission*.

If in doubt contact the Conservation and Urban Design team before starting work by email: urban.design@camden.gov.uk or telephone: 020 7974 5613.

Unsure if you need planning permission?

This guide only covers those works which now need planning permission due to the introduction of Article 4(1). To check for other works which might require planning permission such as rear extensions, dormer windows and garden sheds please contact the Planning Enquiry team by email: ppp@camden.gov.uk or telephone: 020 7974 5613.

Are there any fees for applications made as a result of Article 4(1) Directions?

No. There is no fee for an application made as a result of the Article 4(1) Directions.

Are listed buildings covered by these measures?

There are nearly 500 listed buildings in Hampstead Conservation Area. Listed building consent is required for any works which affects the historic or architectural character of a listed building. Regular maintenance and 'like for like' repairs which match the original work in every way do not need listed building consent. But if repairs use materials or methods that differ from the original then consent will be needed.

Alterations that involve the removal of original parts of the building, that change windows or external brickwork, or that change internal layouts of buildings will require listed building consent.

Internal decoration and the replacement of kitchen and bathroom fittings would not normally require consent, but if new fixings to the building are needed, or new service pipes, flues or vents are being added then consent will be needed.

In addition, under the Town & Country Planning (General Permitted Development) Order 1995 (as amended), the alteration, enlargement or demolition of a boundary wall is not permitted development on a listed building, and planning permission is required for this work.

Key Contacts and Further Reading

Planning:

- London Borough of Camden Planning and Conservation & Urban Design advice Tel: 020 7974 5613
Website: <http://www.camden.gov.uk/planning/>
email: urban.design@camden.gov.uk
By post: Planning & Public Protection, Camden Town Hall, Judd Street, London WC1H 9JE
- **Hampstead Conservation Area Advisory Committee**
www.camden.gov.uk then search for 'Hampstead CAAC'
c/o 32 Willoughby Road, London NW3 1RU HCAAC@pipemedia.co.uk

The Hampstead Conservation Advisory Committee is a group of local residents which includes some architectural and planning experts. It is constituted in response to legislative advice, with the role of advising Camden on the merits of every planning application made in four Conservation Areas: Hampstead, South End Green, Fitzjohn's/Netherhall and Redington/Frognaal. Importantly, we strive to include members from all parts of these areas, so that our advice is informed by local knowledge. HCAAC is always looking for new members and interested residents are invited to apply to this address.

- Planning Portal: <http://www.planningportal.gov.uk/>

Specialist Conservation Advice:

A list of contractors with experience in historic building conservation and based both in and outside Camden are available from the Conservation and Urban Design team.

Alternatively you can search for companies and read articles about repair in:

- *Directory of Building Conservation* - telephone: 01747 871717 to order or visit: <http://www.buildingconservation.com>
- *Adapting Historic Buildings for Climate Change*
<http://www.climatechangeandyourhome.org.uk>
- *A Stitch in Time: Maintaining Your Property Makes Good Sense and Saves Money*, Institute of Historic Building Conservation
http://www.ihbc.co.uk/stitch_in_time.htm
- Advice on introducing *Draughtproofing and Secondary Glazing* in historic windows (follow the link on English Heritage's home page to 'Publications', then 'Free Publications' where you can search for and download a range of guidance notes) (telephone: 020 7973 3000)
<http://www.english-heritage.org.uk/server/show/nav.1630>

- Society for the Protection of Ancient Buildings *Technical Pamphlet 13: Repair of Wood Windows* – detailed guidance on identifying and treating decay, with illustrated methods of repair; available from the SPAB. Tel: 020 7377 1644 to order or visit: <http://www.spab.org.uk>
- *Heritage gateway* – one stop shop for heritage guidance and policy <http://www.heritagegateway.org.uk/>
- *The Victorian Society* - Pamphlet Series on Caring for Victorian Houses.
Tel: 020 8994 1019 to order or visit: www.victorian-society.org.uk

Publications

- London Borough of Camden, *Hampstead Conservation Area Statement* (available from Camden Planning reception)
- Hunt, Roger & Suhr, Marianne: *The Old House Handbook - A Practical Guide to Care and Repair* published in association with The Society for the Protection of Ancient Buildings (Frances Lincoln Limited 2008)
- Powys, A.R: *Repair of Ancient Building*; Third Edition - A reprint of the 1920s classic read for any owner of an old (and non-necessarily ancient) house.
- Rock, Ian: *The Victorian House Manual*, RICS Books
- Wedd, Kitt: *The Victorian Society Book of the Victorian House*, published by The Victorian Society



Contact: Tina Garratt / Joanna Ecclestone
Direct Line: 020 7974 2537 / 2078
e-mail: urban.design@camden.gov.uk

Urban Design & Renewal Service
Culture and Environment
Planning
London Borough of Camden
Town Hall, Argyle Street
LONDON WC1H 8ND
Tel: 020 7974 5613
urban.design@camden.gov.uk
www.camden.gov.uk/conservingcamden

24th August 2010

Address line 1
Address line 2
Address line 3
London postcode

Dear Owner / Occupier

**IMPORTANT: New planning measures take effect in the
Hampstead Conservation Area from 1st September 2010**

We are writing to notify you of new planning measures which affect your property and have been brought in to protect the appearance of the Hampstead Conservation Area.

The measures have been introduced in response to long-term commitment from Camden Councillors to protecting our conservation areas, detailed survey and monitoring work by Camden's Conservation & Urban Design Team and extensive consultation with residents who in the majority voted in favour of introducing them. They are supported by your local amenity groups, the Heath & Hampstead Society and Hampstead Conservation Area Advisory Committee, who have campaigned for many years for their introduction.

What are the new measures?

The measures are contained in an 'Article 4(1) Direction' which removes what are known as 'Permitted Development rights' under the Town and Country Planning (General Permitted Development) Order 1995 (As Amended).

How will the new planning measures affect me?

Following the introduction of the Article 4 Direction you will need to make a planning application for certain types of work to the front of properties and the sides of corner properties which face the road. But you will still be permitted to carry out minor alterations like installing security lighting, burglar alarms or repainting (where your property is currently painted). You do not currently have to pay a fee for planning applications which are subject to control under the Article 4(1) Direction.

The measures are to protect historic features, but **you can still carry out works of repair and replacement without making a planning application, if the replacement materials and design match the existing materials and design.**

Summary of types of work which now require planning permission:

1. Enlarging, altering or improving the front of a property – including alterations to and replacement of windows, doors, decorative details such as porches, terracotta panels and ironwork and such like

2. Painting the front of a property (if it will differ from the traditional surface treatment). You do not need to apply for planning permission to repaint your property if it is already painted or covered in 'stucco' or a traditional render finish.
3. Additions or alterations to the roof at the front of a property, including the installation of a roof-light or solar panel
4. Erecting, altering or removing a chimney
5. Making, enlarging, improving or altering a hard surface at the front of a property
6. Erecting, altering or demolishing a gate, wall or fence at the front of a property

The Direction affects residential properties only; businesses already have to make an application for this type of work. Flats already have to make an application for most of these changes however if they are converted back into houses they do not. We are applying the Article 4(1) Direction to flats which could be turned back into houses as well to make sure they are protected in the future.

How can I get more advice about what needs planning permission?

The attached leaflet summarises the implications of the new measures and the map indicates all the properties included.

We have also produced a *Hampstead Conservation Area Design Guide* to explain works of repair and alteration and give you guidance on making planning applications. The guide is intended to be useful to householders, architects, builders, developers, surveyors and others concerned with giving advice or working on properties within the area that are covered by the new measures. You can download the Design Guide from our website at: www.camden.gov.uk/conservingcamden, by requesting a copy from the Customer Services Team, Tel: 020 7974 5613 / email: ppp@camden.gov.uk, or by writing to the address overleaf.

Why are these regulations being introduced? What are the benefits?

The introduction of an Article 4(1) Direction is to ensure that traditional features are preserved and, where possible, repaired rather than replaced. Historic features are normally capable of being sensitively repaired and this is often cheaper than wholesale replacement. Traditional features can also add value to your property, and a recent (2009) survey by English Heritage showed properties with original features tend to sell for more, and more quickly, than equivalent properties outside a Conservation Area.

How can I find out more?

The Full Article 4(1) Direction (made up of the Legal Notice, the Schedule setting out the types of work controlled by the new planning measures and the List of Properties affected), as well as the Design Guide can be found:

On our website: www.camden.gov.uk/conservingcamden

In person: Culture & Environment reception, Camden Town Hall Extension, Argyle Street, London WC1H 8EQ, from Monday – Friday, 9am-5pm.

By telephoning: 020 7974 5613

By Email: ppp@camden.gov.uk

Yours faithfully

Joanna Ecclestone
Manager, Conservation and Urban Design Team