

12 No Liriope muscari  
 12 No Heuchera 'Creme Brule'  
 9 No Dryopteris filix mas  
 12 No Bergenia 'Autumn Magic'  
 .... planted in groups of 3no across the section  
 7 No Vinca minor 'Bowles Purple' planted evenly across the bed

WITH  
 18 No Crocus tommasnanus  
 18 No Galanthus nivalis  
 12 No Narcissus 'Tete a Tete'  
 Planted in groups of 5-7No evenly across the whole bed

12 No Euphorbia griffithii 'Fireglow'  
 12 No Anemone japonica 'Alba'  
 12 No Dryopteris filix mas...planted in groups of 3no across the section  
 9No Pachysandra terminalis planted evenly across the section

12 No Liriope Muscari  
 9 No Asplenium scolopendrium  
 9 No Polypodium scolopendrium  
 12 No Euphorbia amygdaloides var 'Robbiae'  
 12 No Brunnera macrophylla  
 9 No Heuchera 'Marmalade'  
 9 No Aquilegia vulgaris planted in groups of 3-5no across the section  
 7 No Vinca minor 'Alba' planted evenly across the section

9 No Dryopteris affinis  
 12 No Bergenia 'Silberlicht'  
 12 No Pulmonaria officinalis  
 12 No Heuchera 'Frosted Violet'  
 ...planted in groups of 3no evenly across the section

15 No Epimedium x warleyense 'Orankekönigin'  
 12 No Anemone japonica  
 9 No Asplenium scolopendrium  
 12 No Brunnera macrophylla  
 .... planted in groups of 3no across the section  
 9 No Pachysandra terminalis ted evenly across the section

WITH  
 36 No Crocus tommasnanus  
 50 No Galanthus nivalis  
 36 No Narcissus 'Tete a Tete'  
 Planted in groups of 5-7No evenly across the whole bed

12 No Liriope Muscari  
 9 No Euphorbia griffithii 'Fireglow'  
 9 No Geranium phaeum  
 6 No Dryopteris filix mas  
 .... planted in groups of 3-5no across the section  
 7 No Vinca minor 'Bowles Purple' planted evenly across the section

WITH  
 15 No Crocus tommasnanus  
 15 No Galanthus nivalis  
 15 No Narcissus 'Tete a Tete'  
 Planted in groups of 5-7No evenly across the whole bed

12 No Liriope Muscari  
 12 No Euphorbia griffithii 'Fireglow'  
 12 No Geranium phaeum  
 9 No Asplenium scolopendrium  
 9 No Aquilegia vulgaris planted in groups of 3-5no across the section  
 7 No Vinca minor 'Alba' planted evenly across the section

WITH  
 18 No Crocus tommasnanus  
 18 No Galanthus nivalis  
 18 No Narcissus 'Tete a Tete'  
 Planted in groups of 5-7No evenly across the whole bed

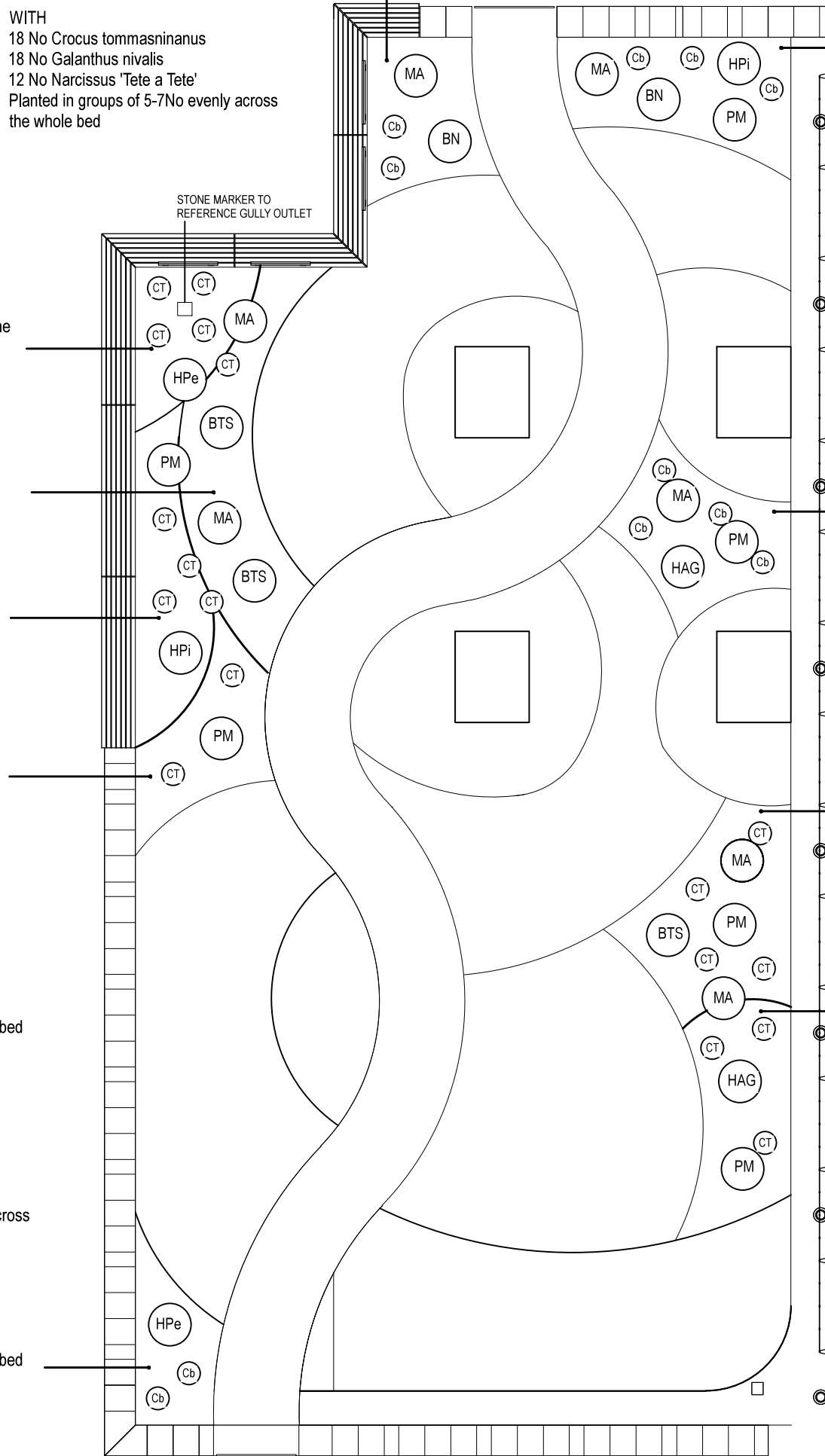
12 No Epimedium x warleyense 'Orankekönigin'  
 9 No Pulmonaria officinalis  
 12 No Bergenia 'Autumn Magic'  
 9 No Anemone japonica  
 9 No Polypodium scolopendrium  
 .... planted in groups of 3no across the section  
 7 No Vinca minor 'Bowles Purple' planted evenly across the bed

WITH  
 18 No Crocus tommasnanus  
 18 No Galanthus nivalis  
 18 No Narcissus 'Tete a Tete'  
 Planted in groups of 5-7No evenly across the whole bed

12 No Dryopteris affinis  
 12 No Bergenia 'Silberlicht'  
 12 No Pulmonaria officinalis  
 12 No Heuchera 'Frosted Violet'  
 6 No Aquilegia vulgaris  
 6 No Euphorbia amygdaloides var 'Robbiae' ...planted in groups of 3no evenly across the section  
 9 No Vinca minor 'Alba' planted evenly across the bed

12 No Euphorbia griffithii 'Fireglow'  
 12 No Anemone japonica 'Alba'  
 12 No Dryopteris filix mas.  
 12 No Epimedium x warleyense 'Orankekönigin'  
 9 No Heuchera 'Creme Brule' ...planted in groups of 3 evenly across the section  
 9 No Pachysandra terminalis planted evenly across the section

WITH  
 30 No Crocus tommasnanus  
 30 No Galanthus nivalis  
 30 No Narcissus 'Tete a Tete'  
 Planted in groups of 5-7No evenly across the whole bed



**Denser Edge groupings species**

43 No Anemone japonica  
 24 No Aquilegia vulgaris  
 27 No Asplenium scolopendrium  
 24 No Bergenia 'Autumn Magic'  
 24 No Bergenia 'Silberlicht'  
 24 No Brunnera macrophylla  
 21 No Dryopteris affinis  
 39 No Dryopteris filix mas  
 36 No Epimedium x warleyense 'Orankekönigin'  
 18 No Euphorbia amygdaloides var 'Robbiae'  
 33 No Euphorbia griffithii 'Fireglow'  
 21 No Geranium phaeum  
 21 No Heuchera 'Creme Brule'  
 24 No Heuchera 'Frosted Violet'  
 9 No Heuchera 'Marmalade'  
 48 No Liriope muscari  
 27 No Pachysandra terminalis  
 33 No Pulmonaria officinalis  
 18 No Polypodium vulgare  
 21 No Vinca minor 'Bowles Purple'  
 23 No Vinca minor 'Alba'

**Denser Edge groupings bulbs**

117 No Crocus tommasnanus  
 131 No Galanthus nivalis  
 111 No Narcissus 'Tete a Tete'

**Key to Denser Edge Specimen Shrubs**

Plant 1 No where indicated  
 2 No - BN Berberis thunbergii 'Atropurpurea Nana'  
 3 No - BTS Berberis thunbergii 'Starburst'  
 2 No - HAG Hebe 'Autumn Glory'  
 2 No - HPe Hebe 'Pewter Dome'  
 2 No - HPI Hebe pinguifolia  
 7 No - MA Mahonia aquifolium 'Orange Flame'  
 6 No - PM Phygelius x rectus 'Moomraker'

**Key to Denser Edge Specimen Grasses**

Plant 1 No where indicated  
 18 No - CT Carex testacea 'Prairie Fire'  
 11 No - Cb Carex buchananii

**Notes**

- Refer to LWL-FCI-PlantSchedule001 for planting details  
 - Some migration of species across the planted areas is possible without appropriate management.  
 - LWL has no input into the engineering or weight bearing capacity of the beds  
 - Plant substitutions only to be made with approval of the Supervising Landscape Architect  
 - The plants selected have tolerance to drier weather conditions but are not drought tolerant. The planting beds will require regular irrigation to be reliably moist in their first 18 months thereafter as appropriate to weather conditions.

CHAMBER WITH 400x400 RECESSED MH COVER HOSE UNION BIB TAP CONNECTION FOR IRRIGATION