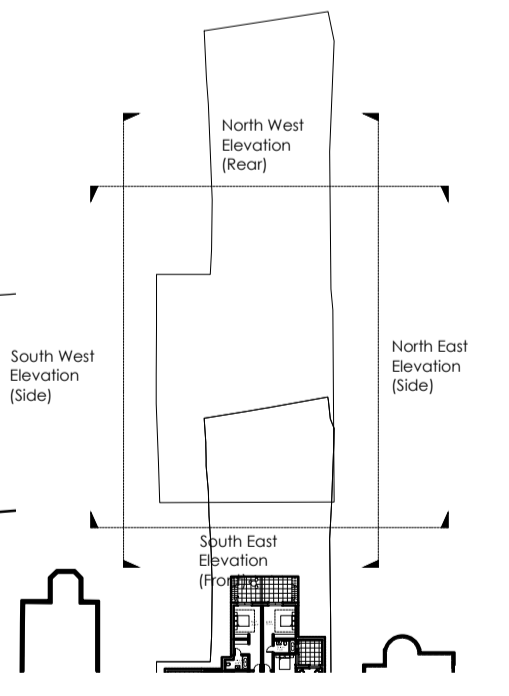


0 1 2 3 4 8m

NOTES

PLANNING

NOTE:  
REV F 24.02.14. Reduction of window and roof in second floor  
REV G 22.04.14. Levels corrected & New entrance door



**Martin Evans Architects**  
 18 Charlotte Road  
 London EC2A 3PB  
 tel 020 7729 2474

**JOB**  
 OAKHILL AVENUE  
 LONDON  
 NW3 7RE

**TITLE**  
 PROPOSED ELEVATION  
 SOUTH-EAST (FRONT)

DATE	06.02.2014
SCALE	1:50 @ A1
DRAWN	B.A
DRAWING NO.	OHA-PL-PR-20G