

NOTES

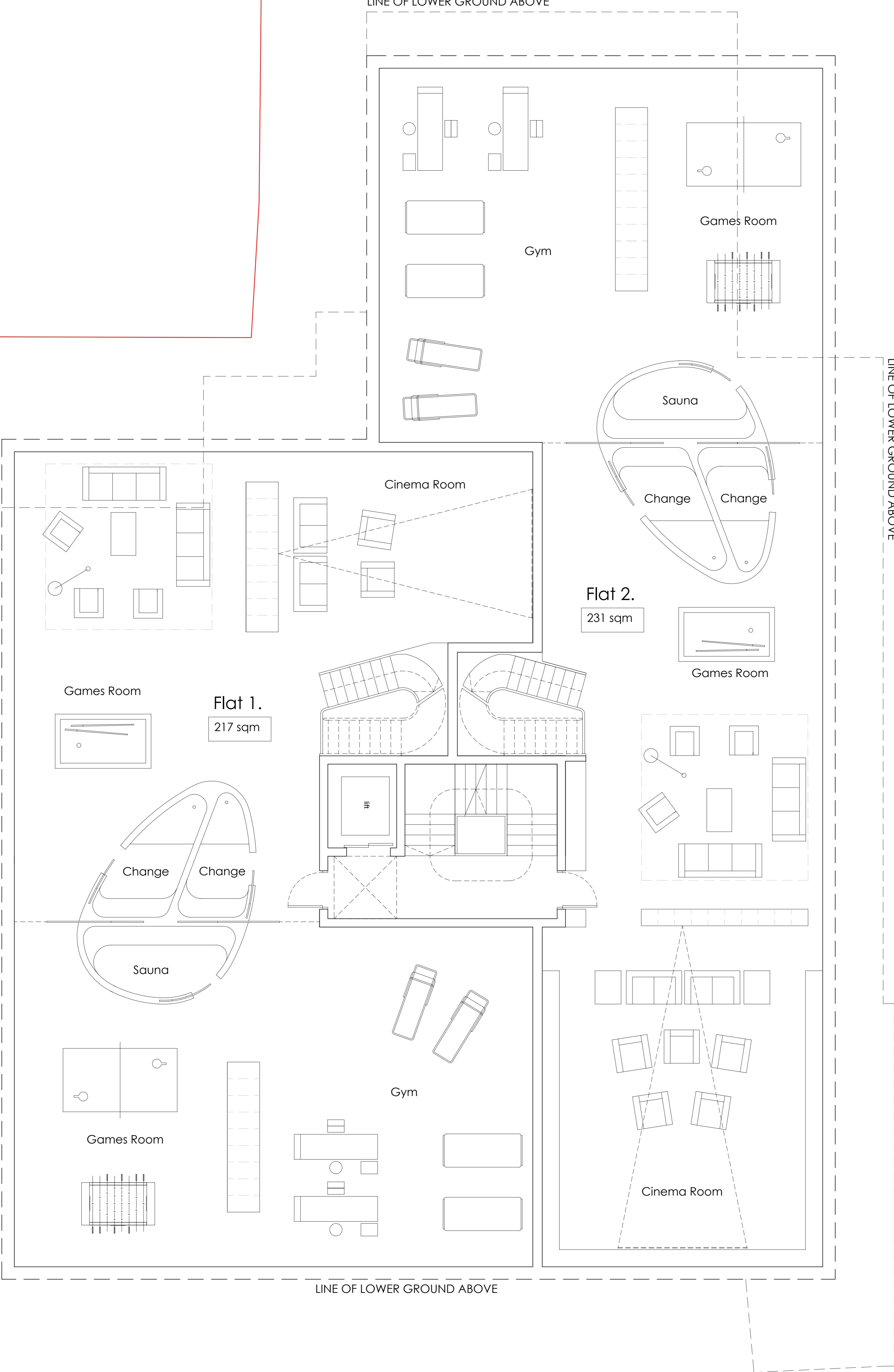
PLANNING

REV G 24.03.14 - Removal of the swimming pool in the basement.

LINE OF LOWER GROUND ABOVE

LINE OF LOWER GROUND ABOVE

LINE OF LOWER GROUND ABOVE



Martin Evans Architects

18 Charlotte Road
London EC2A 3PB
tel 020 7729 2474

JOB
OAKHILL AVENUE
LONDON
NW3 7RE

TITLE
PROPOSED BASEMENT PLAN

DATE 06.02.2014
SCALE 1:50 @ A1
DRAWN S.N.D.

DRAWING NO. OHA-PL-PR-02 G