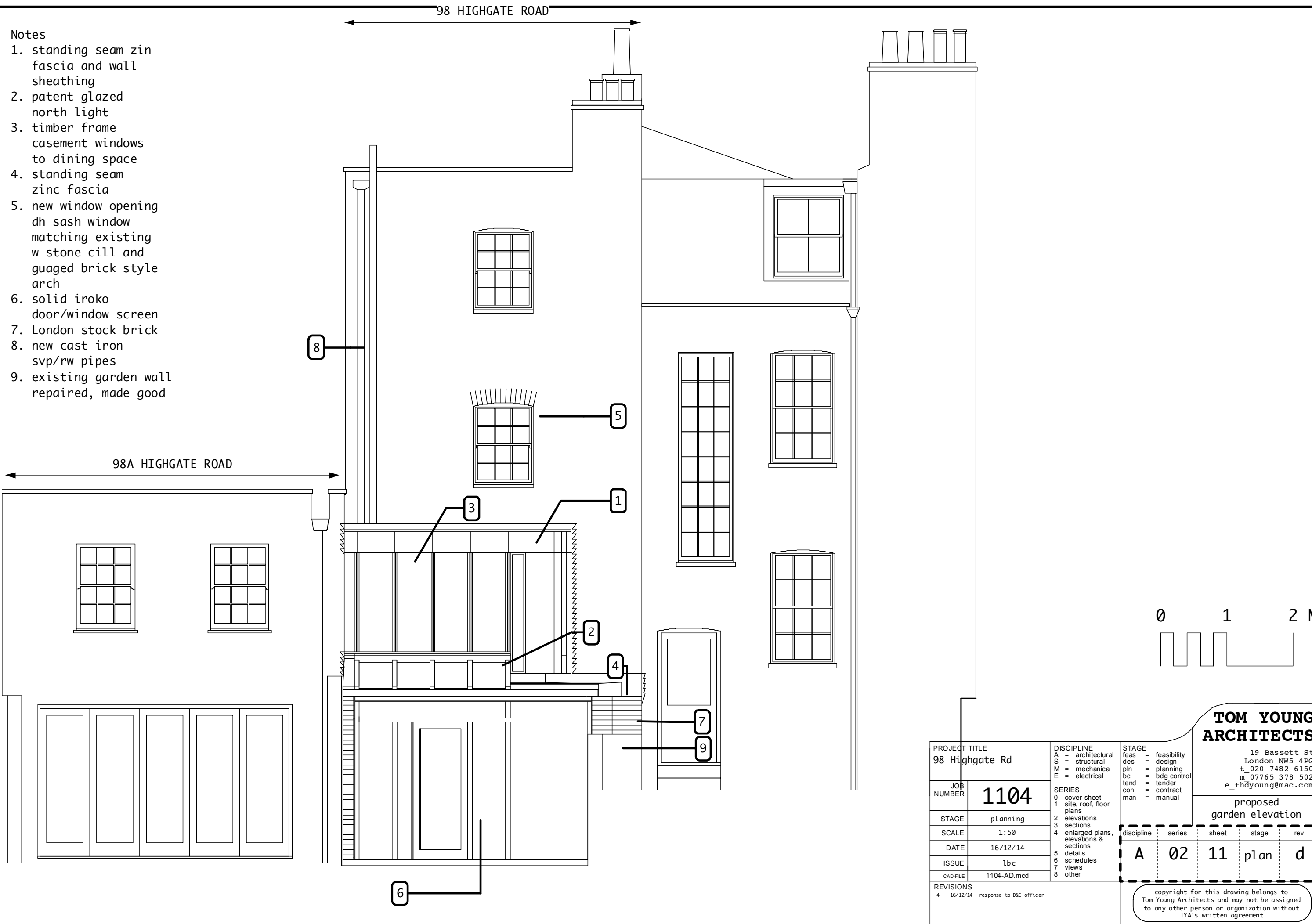


- Notes
- 1. standing seam zin fascia and wall sheathing
  - 2. patent glazed north light
  - 3. timber frame casement windows to dining space
  - 4. standing seam zinc fascia
  - 5. new window opening dh sash window matching existing w stone cill and guaged brick style arch
  - 6. solid iroko door/window screen
  - 7. London stock brick
  - 8. new cast iron svp/rw pipes
  - 9. existing garden wall repaired, made good



PROJECT TITLE 98 Highgate Rd		DISCIPLINE A = architectural S = structural M = mechanical E = electrical	STAGE feas = feasibility des = design pln = planning bc = bdg control tend = tender con = contract man = manual		<b>TOM YOUNG ARCHITECTS</b>  19 Bassett St London NW5 4PG t_020 7482 6150 m_07765 378 502 e_thdyoung@mac.com		
JOB NUMBER	1104	SERIES 0 cover sheet 1 site, roof, floor plans 2 elevations 3 sections 4 enlarged plans, elevations & sections 5 details 6 schedules 7 views 8 other	proposed garden elevation				
STAGE	planning		discipline	series	sheet	stage	rev
SCALE	1:50		A	02	11	plan	d
DATE	16/12/14						
ISSUE	lbc						
CAD-FILE	1104-AD.mcd						
REVISIONS 4 16/12/14 response to D&C officer		copyright for this drawing belongs to Tom Young Architects and may not be assigned to any other person or organization without TYA's written agreement					