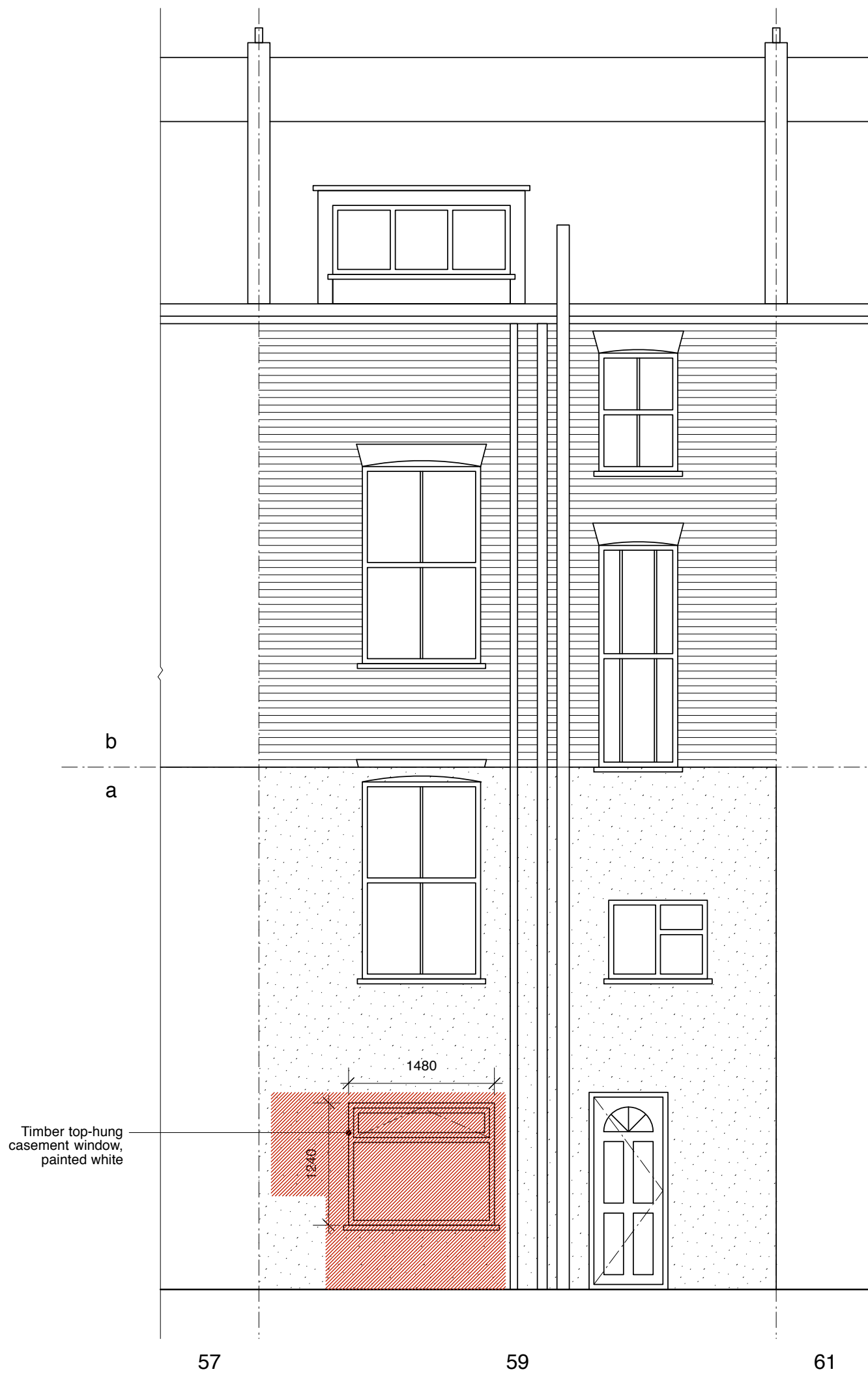
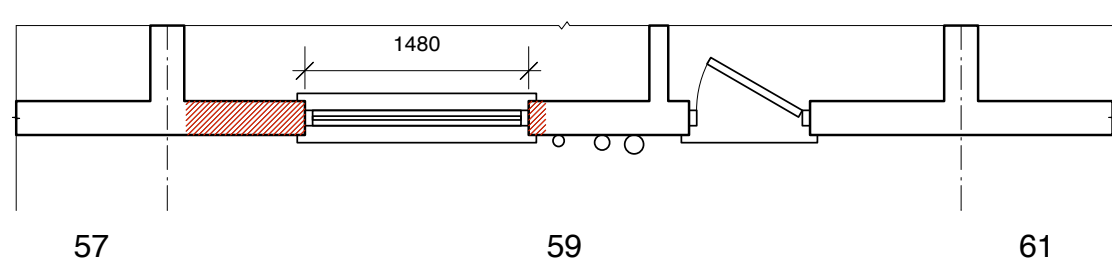


**EXISTING**



Timber top-hung casement window, painted white

Elevation



Plan

<b>Simon Drayson Darren Leach Architects</b>	
Flat 40 Gabriel House, 10 Odessa Street, London SE16 7HQ T 0207 231 7495	
<b>Project</b> Rear Facade Alterations 59a Gaisford Street London NW5 2EB	
<b>Client</b> Tracy Short	
<b>Drawing Title</b> Existing Elevation and Plan	
<b>Scale</b> 1:50 at A3	<b>Date</b> April 2015
<b>Drawn</b> SD	<b>CHKD</b> DL
<b>DWG No.</b> EX01	<b>Rev.</b>