

MATERIALS PALETTE

EXISTING:

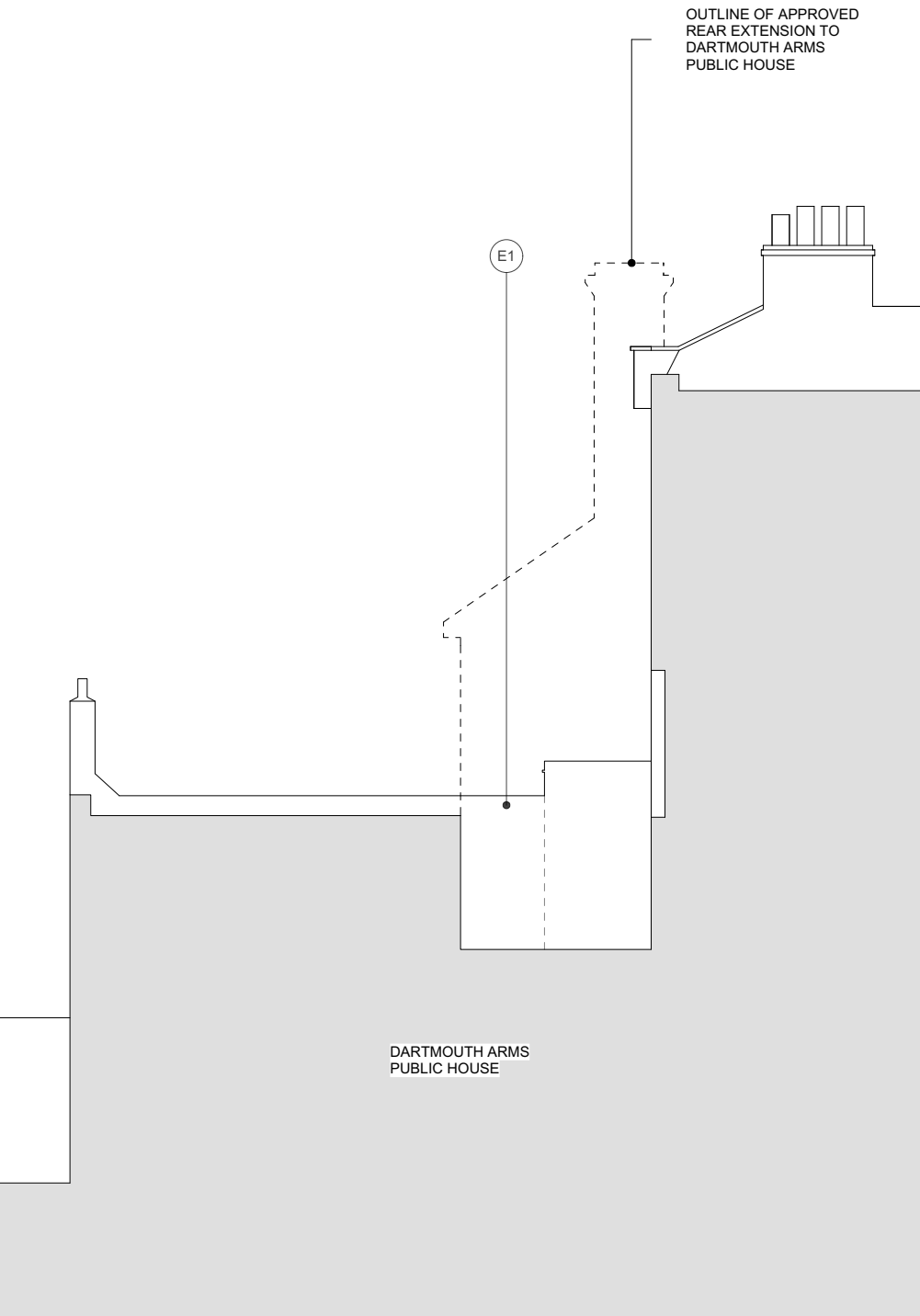
- E1 - LONDON STOCK BRICK
- E2 - BLUE SLATE ROOF TILES
- E3 - WHITE RENDER
- E4 - EXISTING SASH WINDOW
- E5 - TIMBER BALUSTRADE
- E6 - REINFORCED GLASS ROOFLIGHT
- E7 - EXISTING TIMBER DOOR PAINTED WHITE
- E8 - TERRACOTTA TILES
- E9 - EXISTING TIMBER DOOR BLACK PAINTED
- E10 - EXISTING TIMBER FASCIA PAINTED WHITE
- E11 - PAINTED TIMBER FIXED WINDOWS

PROPOSED:

- P1 - OBSCURED GLASS ROOFLIGHT
- P2 - TIMBER FINS STAINED
- P3 - FIXED GLAZING
- P4 - INWARD OPENING TIMBER
CASEMENT WINDOWS STAINED
- P5 - TIMBER DOOR STAINED
- P6 - NEW STAIR
- P7 - TIMBER DECKING
- P8 - METAL BALUSTRADE PAINTED
- P9 - GLASS BALUSTRADE
- P9 - TIMBER SASH WINDOW PAINTED
- P10 - OBSCURED FIXED GLAZING
- P11 - TIMBER FASCIA STAINED
- P12 - FULLY OPENING DOORS
- P13 - LONDON STOCK BRICK TO MATCH EXISTING
- P14 - NEW FIRE DOOR
- P15 - TIMBER PANELING

OUTLINE OF APPROVED
REAR EXTENSION TO
DARTMOUTH ARMS
PUBLIC HOUSE

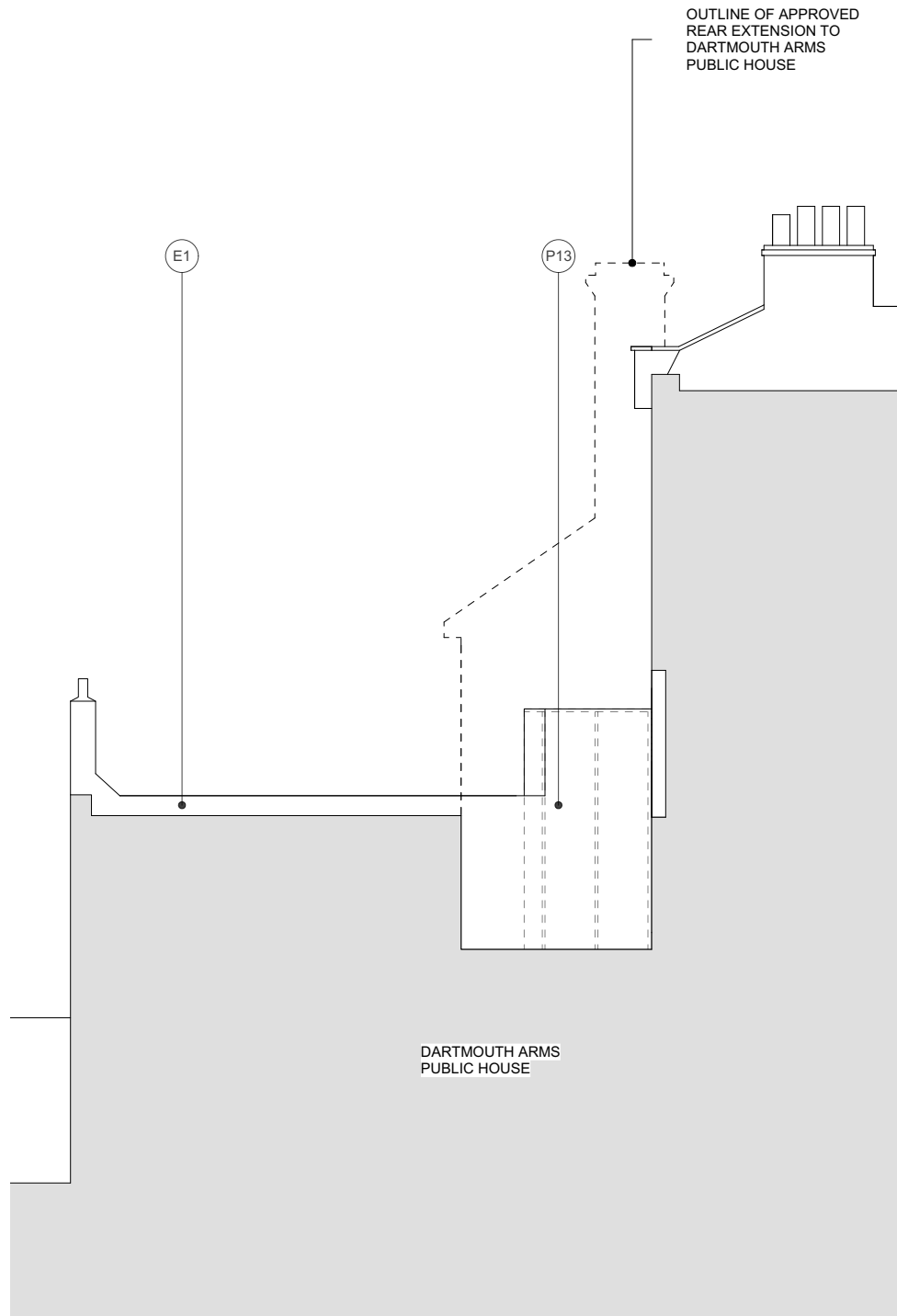
E1



OUTLINE OF APPROVED
REAR EXTENSION TO
DARTMOUTH ARMS
PUBLIC HOUSE

P13

E1



DARTMOUTH ARMS
PUBLIC HOUSE

DARTMOUTH ARMS
PUBLIC HOUSE

EXISTING NORTH ELEVATION

PROPOSED NORTH ELEVATION

REV	DATE	DESCRIPTION	BY
A	31.03.15	REAR EXTENSION REDUCED IN DEPTH + HEIGHT	SC

Clients: Karen Emanuel and Colin Currie

EXTENSION / RENOVATION
37 YORK RISE NW5

title: EXISTING AND PROPOSED
SOUTH ELEVATION

Dwg No: P013 status: PLANNING
scale: 1:100@A3 rev: A
date: JANUARY 2015
by: SC

