

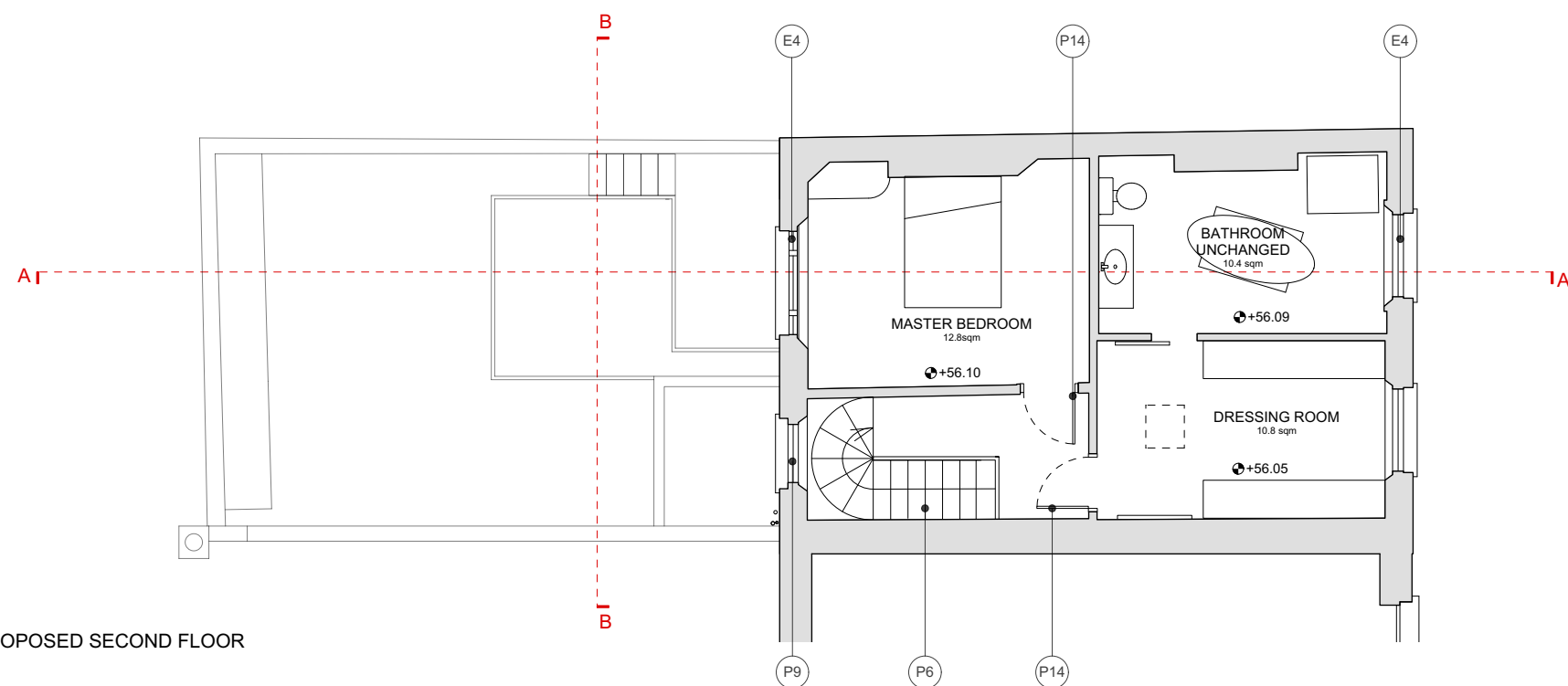
MATERIALS PALETTE

EXISTING:

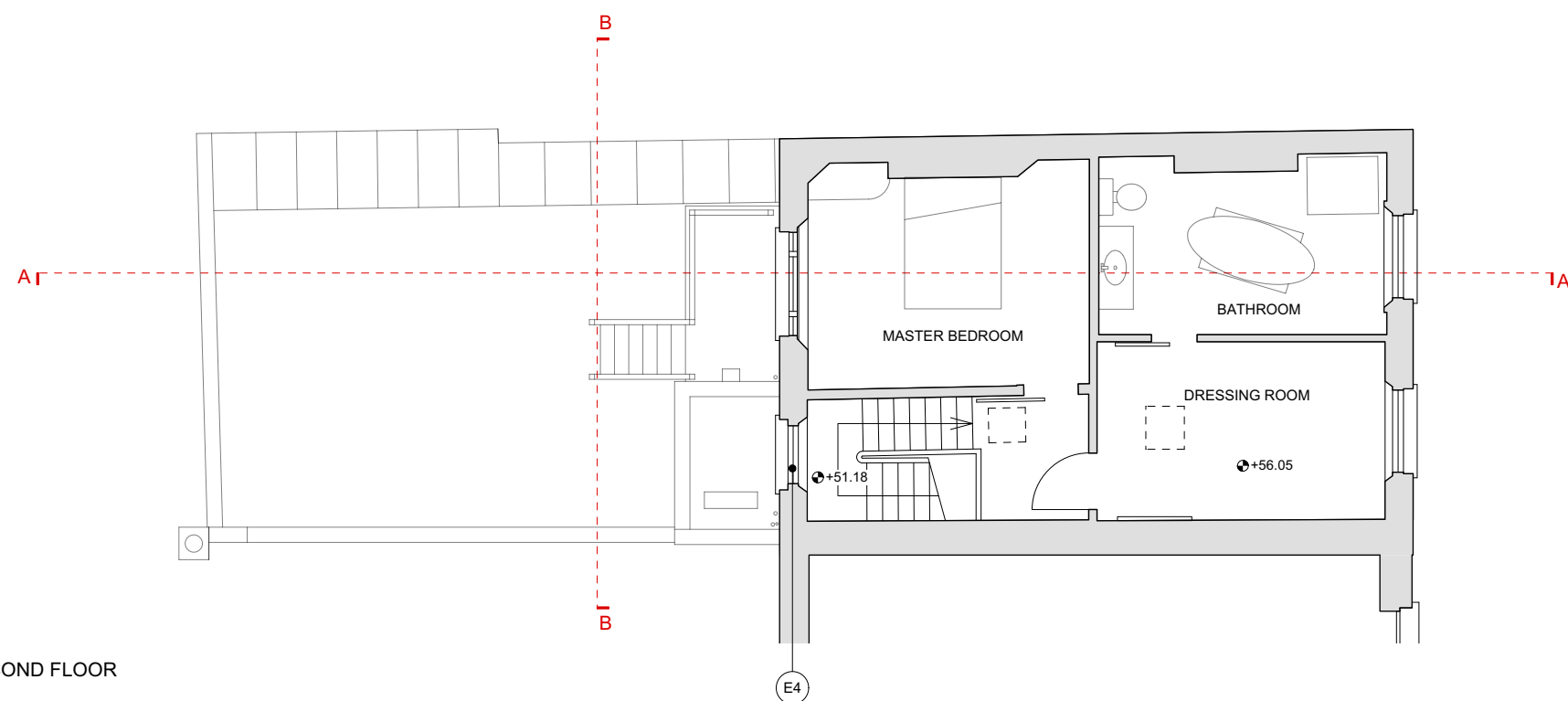
- E1 - LONDON STOCK BRICK
- E2 - BLUE SLATE ROOF TILES
- E3 - WHITE RENDER
- E4 - EXISTING SASH WINDOW
- E5 - TIMBER BALUSTRADE
- E6 - REINFORCED GLASS ROOFLIGHT
- E7 - EXISTING TIMBER DOOR PAINTED WHITE
- E8 - TERRACOTTA TILES
- E9 - EXISTING TIMBER DOOR BLACK PAINTED
- E10 - EXISTING TIMBER FASCIA PAINTED WHITE
- E11 - PAINTED TIMBER FIXED WINDOWS

PROPOSED:

- P1 - OBSCURED GLASS ROOFLIGHT
- P2 - TIMBER FINS STAINED
- P3 - FIXED GLAZING
- P4 - INWARD OPENING TIMBER CASEMENT WINDOWS STAINED
- P5 - TIMBER DOOR STAINED
- P6 - NEW STAIR
- P7 - TIMBER DECKING
- P8 - METAL BALUSTRADE PAINTED
- P9 - GLASS BALUSTRADE
- P9 - TIMBER SASH WINDOW PAINTED
- P10 - OBSCURED FIXED GLAZING
- P11 - TIMBER FASCIA STAINED
- P12 - FULLY OPENING DOORS
- P13 - LONDON STOCK BRICK TO MATCH EXISTING
- P14 - NEW FIRE DOOR
- P15 - TIMBER PANELING



OPTION 3 - PROPOSED SECOND FLOOR



EXISTING SECOND FLOOR

REV	DATE	DESCRIPTION	BY
A	31.03.15	REAR EXTENSION REDUCED IN WIDTH, EXTERNAL STAIR DEPTH REDUCED	SC

Clients: Karen Emanuel and Colin Currie

EXTENSION / RENOVATION
37 YORK RISE NW5

title: EXISTING AND PROPOSED SECOND
FLOOR PLAN

Dwg No: P005 status: PLANNING
scale: 1:100@A3 rev: A
date: JANUARY 2015
by: SC

