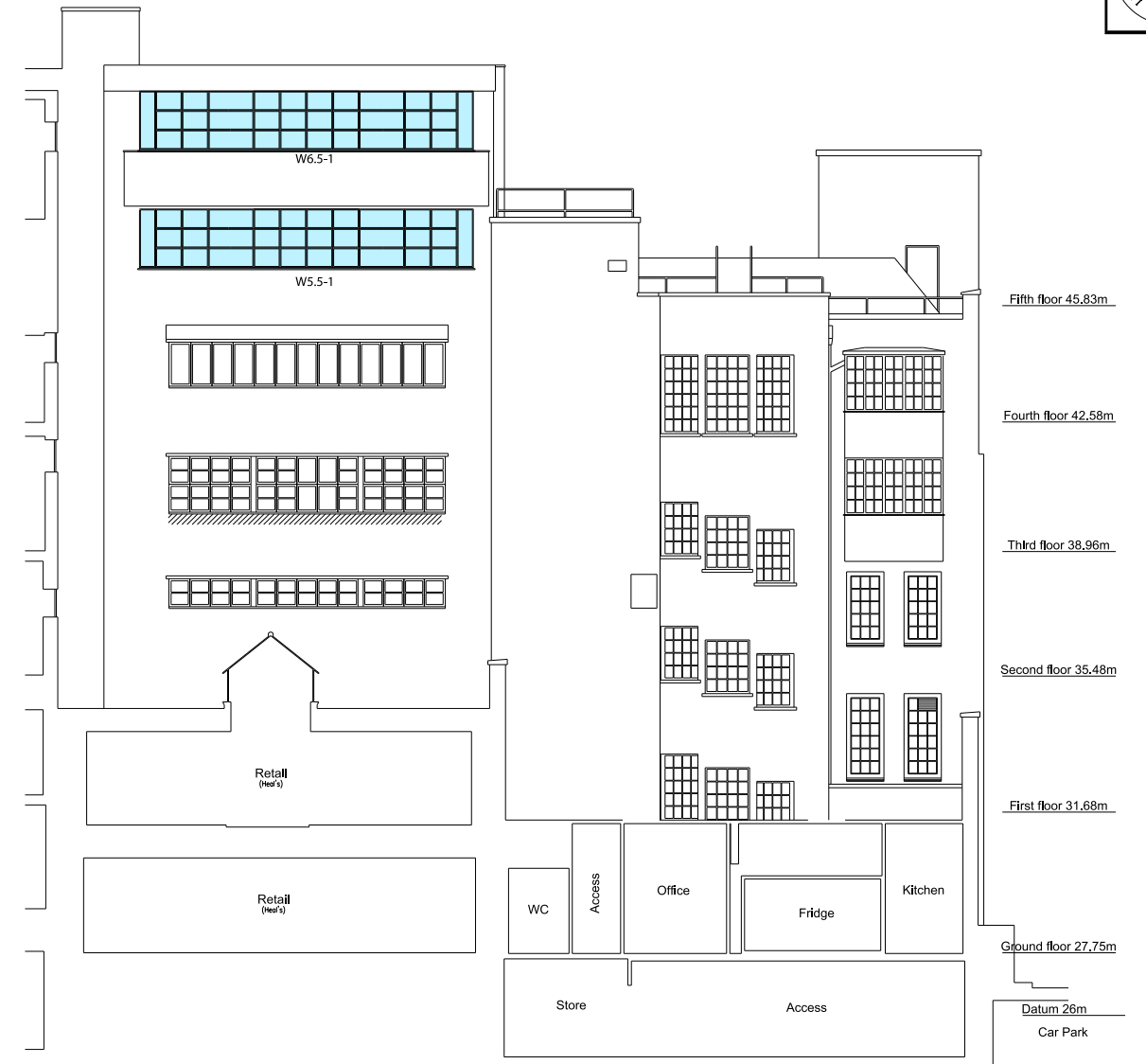
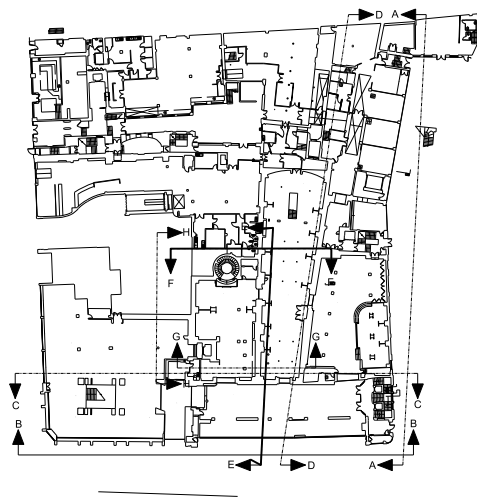


Section G

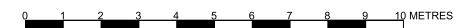


Section F



KEY TO WORKS TO WINDOWS

- Existing steel windows to be refurbished and secondary glazing added
- Existing steel windows to be refurbished
- Existing steel windows to be replaced
- Existing aluminium windows to be replaced



jmarchitects

2nd Floor
Threeways House
40-44 Clipstone Street
London
W1W 5DW

T: 0207 580 5330
F: 0207 436 5348
lon@jmarchitects.net
www.jmarchitects.net

REV.	DESCRIPTION	DATE	DRN BY	CKD BY

PROJECT Heals Refurbishment Phase 2

TITLE Phase 2B Section G + F as proposed

CLIENT Threadneedle Property Investments Ltd

JOB No. 5354 DRAWING No. P(00)254 REVISION /

SCALE 1:200 @ A3 DRAWN BY AR CHECKED BY AM

STATUS Planning DATE January 2015