

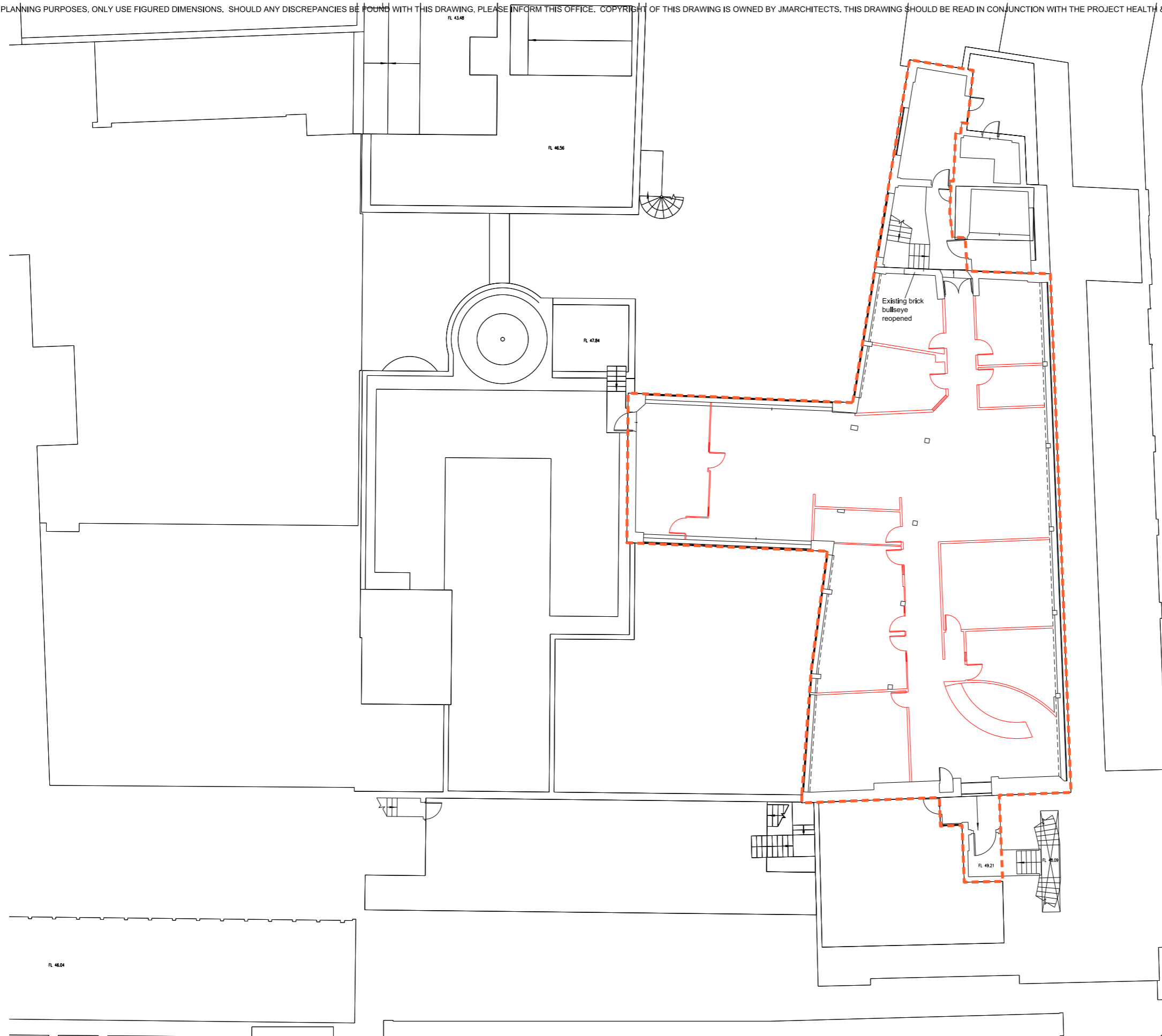
KEY

Site boundary

Partitions/walls to be removed shown in red

Items to be stripped out:

- Plasterboard partitions
- Glazed partitions
- Doors within partitions.
- Reception desk
- All floor coverings and suspended floors.
- Ceiling grids and plasterboard suspended ceilings and bulkheads.
- MDF and plasterboard cupboards and boxing in to services.
- Mechanical and electrical fixtures.
- Light fittings
- Window blinds
- Redundant plant



REV.	DESCRIPTION	DATE	DRN BY	CKD BY

PROJECT	JOB No.	DRAWING No.	REVISION
Heals Refurbishment Phase 2b	5354	P(00)226	/
TITLE	SCALE	DRAWN BY	CHECKED BY
Phase 2B Sixth Floor Strip Out	1:200 @ A3	AR	AM
CLIENT	STATUS	DATE	
Threadneedle Property Investments Ltd	PLANNING	January 2015	

**j**marchitects

2nd Floor  
 Threeways House  
 40-44 Clipstone Street  
 London  
 W1W 5DW  
 T: 0207 580 5330  
 F: 0207 436 5348  
 Ion@jmarchitects.net  
 www.jmarchitects.net