

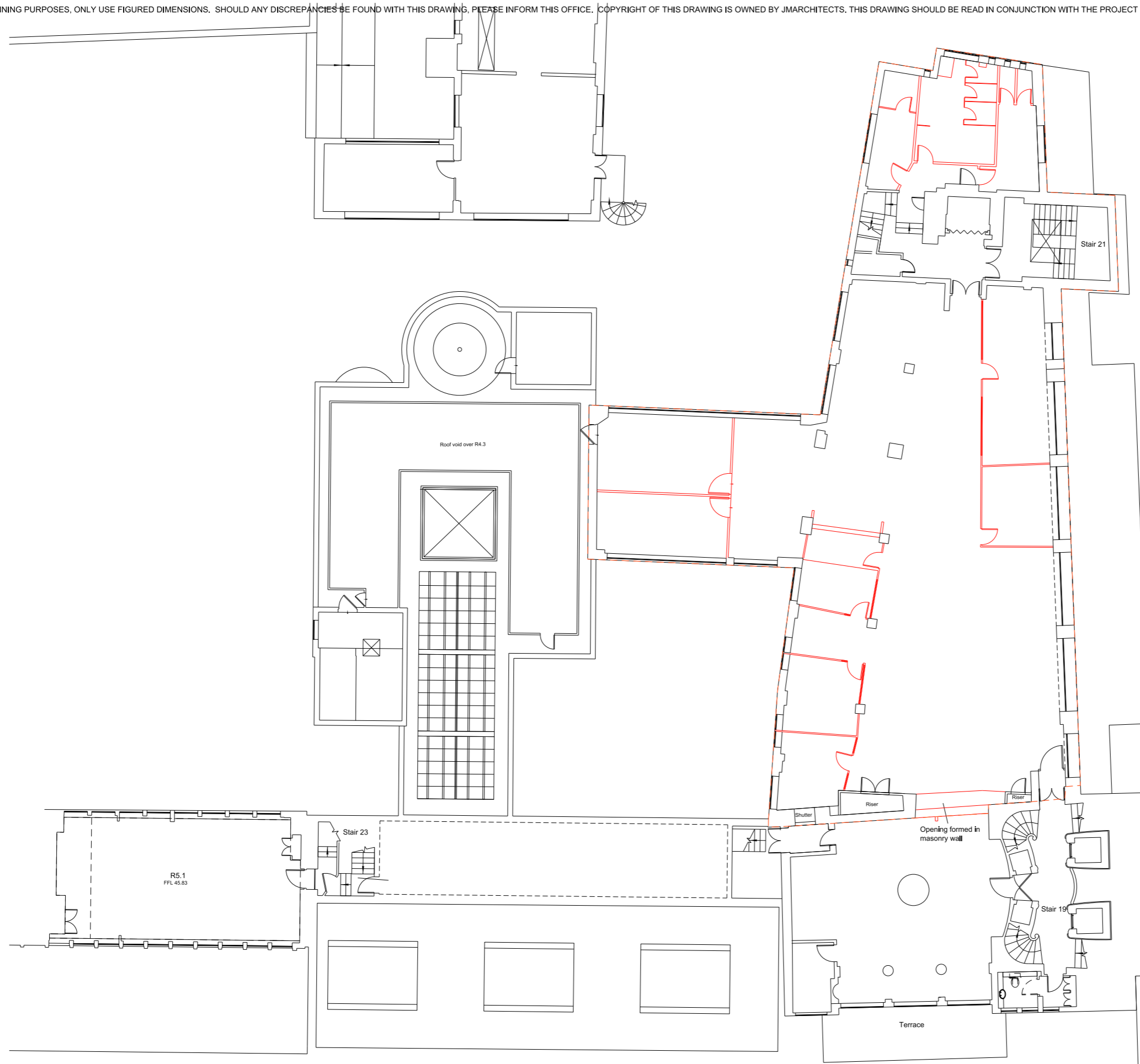


KEY

- Site boundary
- Partitions/walls to be removed shown in red

Items to be stripped out:

- Plasterboard partitions
- Glazed partitions
- Doors within partitions.
- Kitchen fittings
- WC's including partitions and sanitaryware.
- All floor coverings and suspended floors.
- Ceiling grids and plasterboard suspended ceilings and bulkheads.
- MDF and plasterboard cupboards and boxing in to services.
- Mechanical and electrical fixtures.
- Light fittings
- Window blinds



REV.	DESCRIPTION	DATE	DRN BY	CKD BY

PROJECT	Heals Refurbishment Phase 2	JOB No.	5354	DRAWING No.	P(00)225	REVISION	/
TITLE	Phase 2B Fifth Floor Strip Out	SCALE	1:200 @ A3	DRAWN BY	AR	CHECKED BY	AM
CLIENT	Threadneedle Property Investments Ltd	STATUS	PLANNING	DATE	January 2015		

**jmarchitects**

2nd Floor  
 Threeways House  
 40-44 Clipstone Street  
 London  
 W1W 5DW  
 T: 0207 580 5330  
 F: 0207 436 5348  
 Ion@jmarchitects.net  
 www.jmarchitects.net