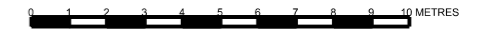
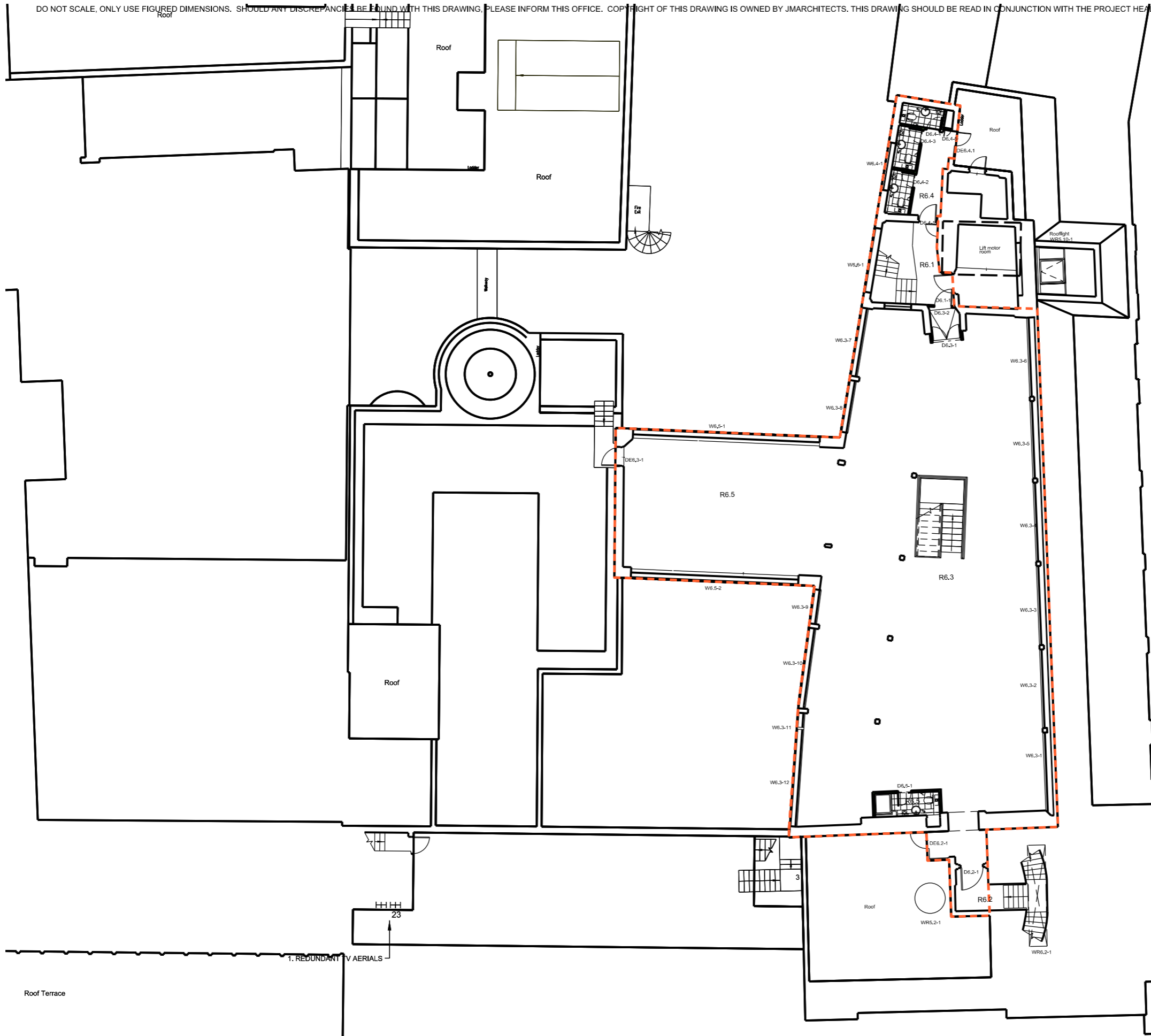


DO NOT SCALE, ONLY USE FIGURED DIMENSIONS. SHOULD ANY DISCREPANCIES BE FOUND WITH THIS DRAWING, PLEASE INFORM THIS OFFICE. COPYRIGHT OF THIS DRAWING IS OWNED BY JMARCHITECTS. THIS DRAWING SHOULD BE READ IN CONJUNCTION WITH THE PROJECT HEALTH & SAFETY FILE AND ANY TASKED BASED METHOD STATEMENTS



— New partitions shown hatched  
 - - - Site Boundary



REV.	DESCRIPTION	DATE	DRN BY	CKD BY

PROJECT	5354	DRAWING No.	P(00)206	REVISION	/
TITLE	Phase 2B Proposed 6th Floor	SCALE	1:200 @ A3	CHECKED BY	AM
CLIENT	Threadneedle Property Investments Ltd	STATUS	PLANNING	DATE	January 2015

**jmarchitects**

2nd Floor  
 Threeways House  
 40-44 Clipstone Street  
 London  
 W1W 5DW  
 T: 0207 580 5330  
 F: 0207 436 5348  
 lon@jmarchitects.net  
 www.jmarchitects.net