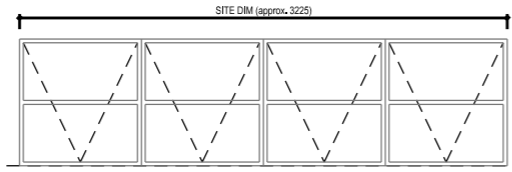
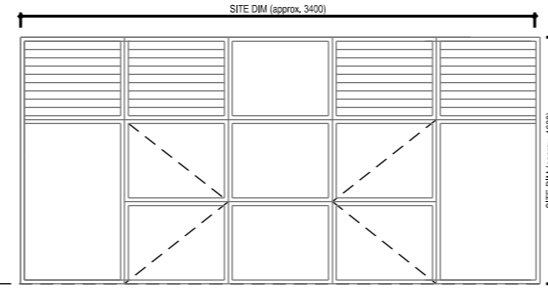


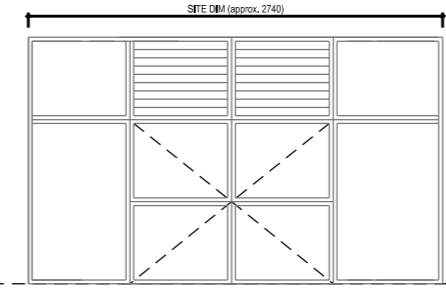
TYPE 11 -  
W6.4-1



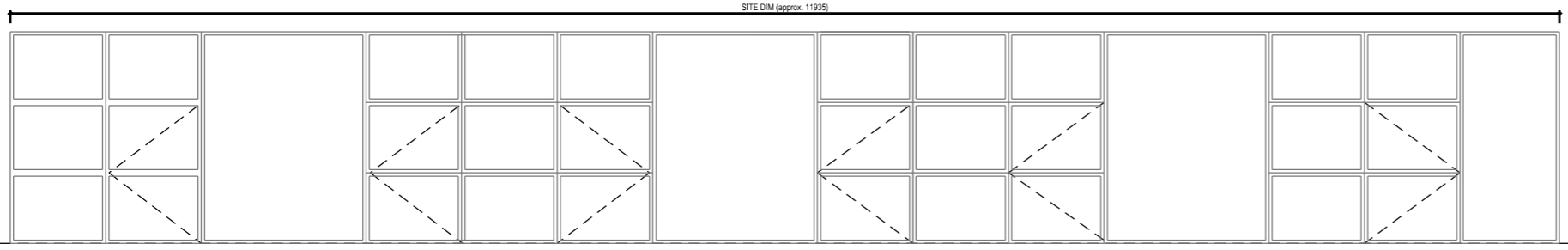
TYPE 12 -  
W6.1-1



TYPE 13 -  
W6.3-7



TYPE 14 -  
W6.3-8

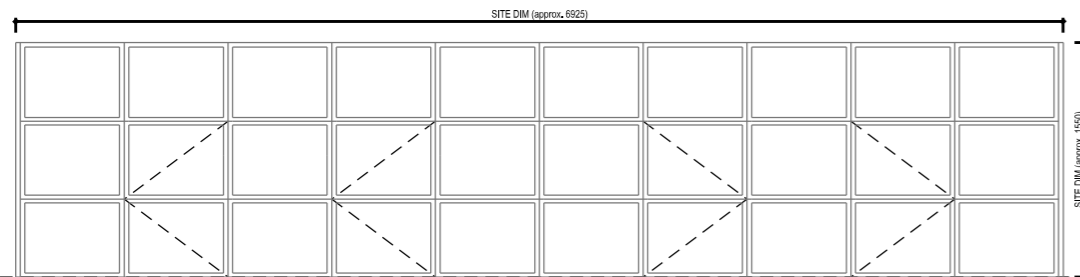


TYPE 15 -  
W6.3-9

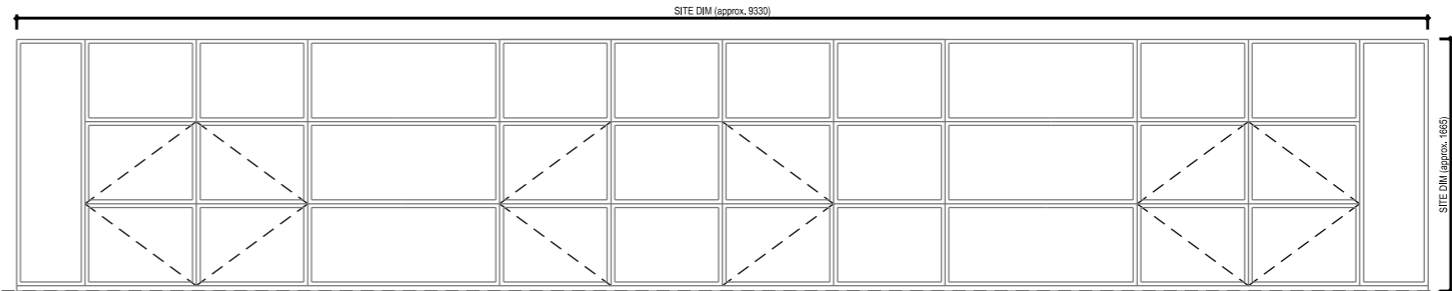
TYPE 15 -  
W6.3-10

TYPE 15 -  
W6.3-11

TYPE 15 -  
W6.3-12



TYPE 16 -  
W6.6-2



TYPE 17 -  
W6.5-1

REV.	DESCRIPTION	DATE	DRN BY	CKD BY

PROJECT	Heals Refurbishment Phase 2
TITLE	Phase 2B Windows
CLIENT	Threadneedle Property Investments Ltd

JOB No.	5354	DRAWING No.	C(0)024	REVISION	
SCALE	1:50 @ A3	DRAWN BY	AR	CHECKED BY	AM
STATUS	Planning	DATE	January 2015		

**jmarchitects**

2nd Floor  
Threeways House  
40-44 Clipstone Street  
London  
W1W 5DW  
T: 0207 580 5330  
F: 0207 436 5348  
lon@jmarchitects.net  
www.jmarchitects.net