



287

277

275

Ordnance Survey & Crown Copyright 2015. All rights reserved. Licence number 10002323. Revised Scale - 1:500

261 to 265

240

336

334

39

73

Auditory Centre for  
Research

The Royal National  
Throat Nose  
and Ear Hospital

75

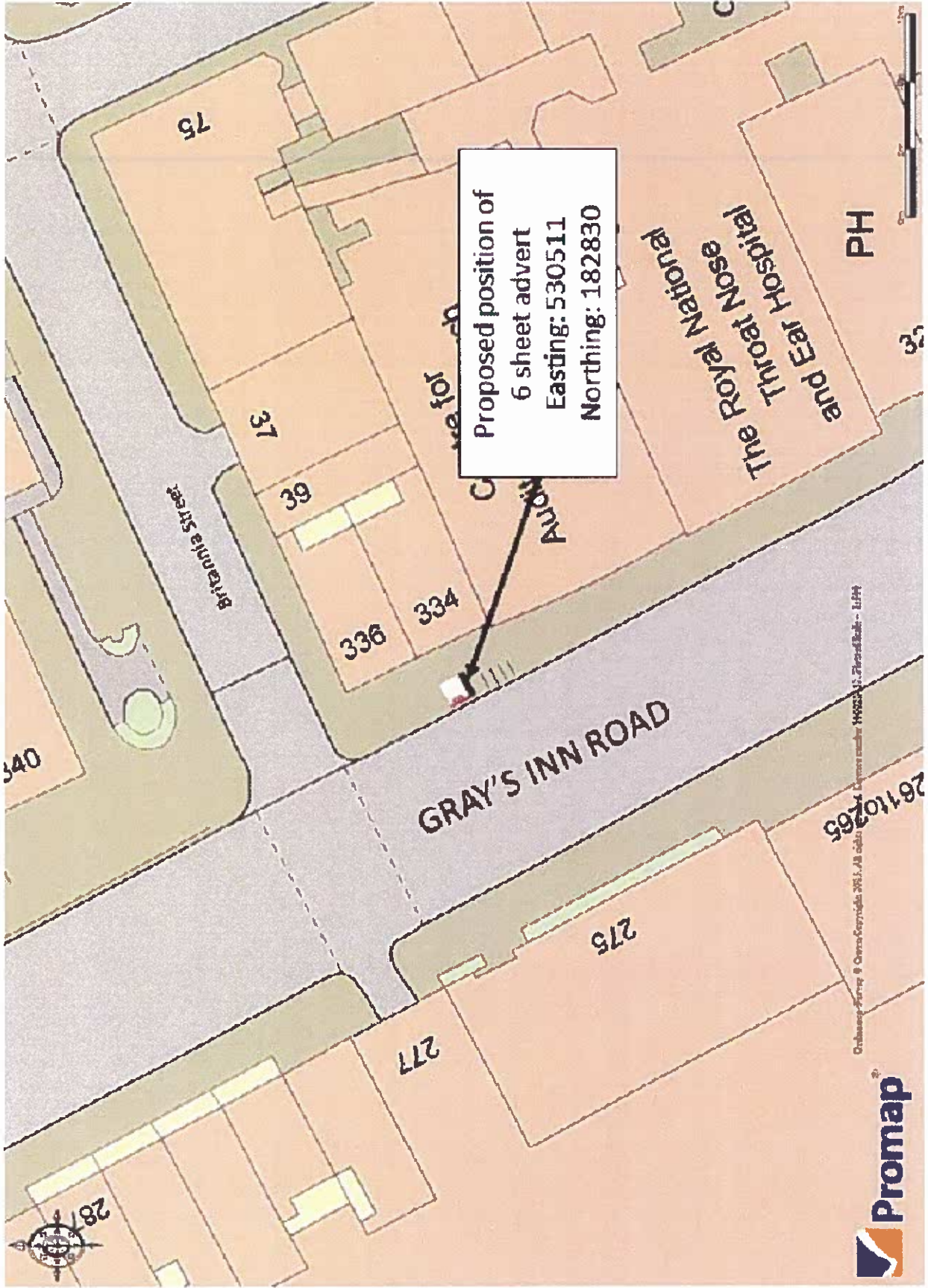
32

PH



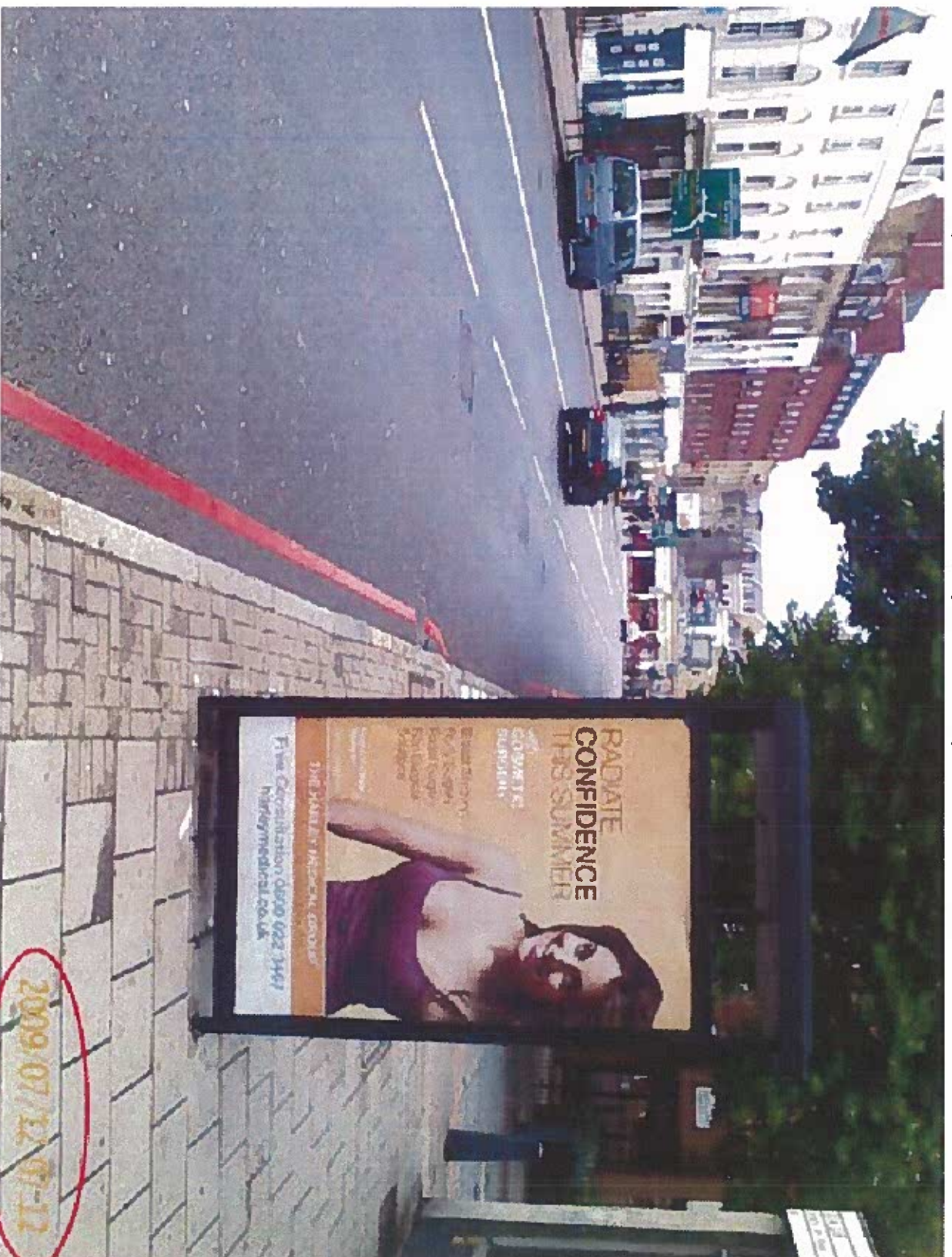
C

pavement in front of 334 Gray's Inn Road, London WC1X 8EE



Infocus Public Networks Ltd

pavement in front of 334 Gray's Inn Road, London WC1X 8EE



Infocus Public Networks Ltd



**Infocus Public Networks Ltd**

## Scimitar Outdoor Ultra Slim 6 sheet – LED Light Box Unit

**Overview:** Aluminium base profile containing the LEDs and lighting panel with a hinging aluminium front cover profile. To change the poster, unlock the top profiles with the special security key provided, swing open the front cover and the poster can be changed via a snap profile. Opening is assisted by 2 gas stays. In between the base and front cover profiles there is a rubber seal making the unit waterproof.

**Overall Dimensions:** 1330mm (w) x 1870mm (h)

**Poster Dimensions:** 6 Sheet (1187mm x 1750mm PORTRAIT)

**Depth:** only 57mm deep.

**Front panel:** 5mm toughened glass, with an 80mm printed border.

**Back panel:** 1mm aluminium sheet, powder coated white on the inside for optimal light reflection.

**Lighting panel:** 10mm clear acrylic sheet, developed for edge lit applications.

**Colour:** Painted to RAL 9005 Black.

**Illumination:** LED Illuminated

**Certification:** CE Certified.

**IP Rating:** IP66 - Waterproof. Totally protected against dust.

Protected against strong jets of water - limited ingress permitted

