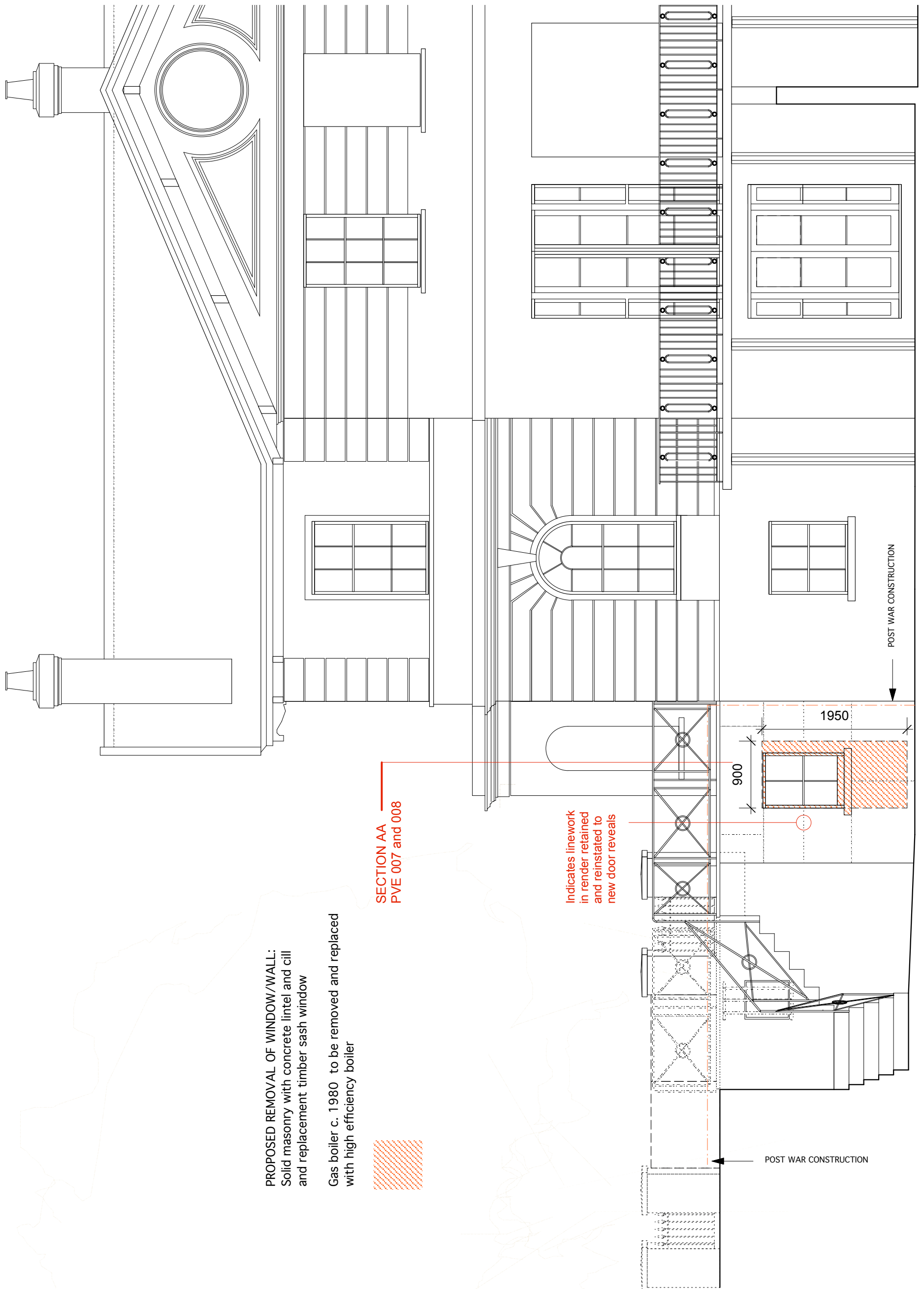


scale 1:50 0.5m 1.0m 1.5m 2.0m 2.5m



PROPOSED REMOVAL OF WINDOW/WALL:
Solid masonry with concrete lintel and cill
and replacement timber sash window

Gas boiler c. 1980 to be removed and replaced
with high efficiency boiler

SECTION AA
PVE 007 and 008

Indicates linework
in render retained
and reinstated to
new door reveals