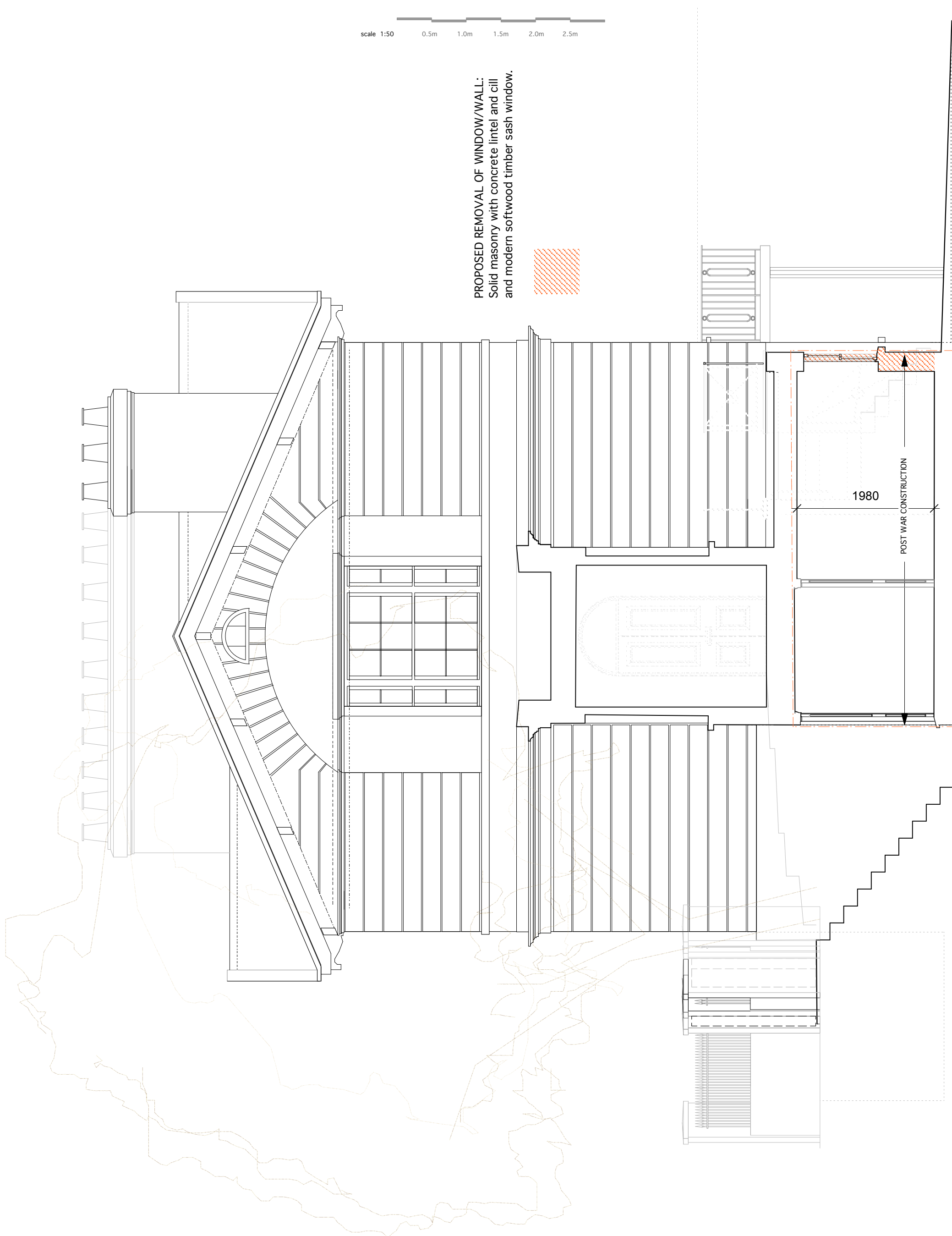
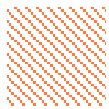


scale 1:50 0.5m 1.0m 1.5m 2.0m 2.5m

PROPOSED REMOVAL OF WINDOW/WALL:  
Solid masonry with concrete lintel and cill  
and modern softwood timber sash window.



arts lettres techniques ARCHITECT Arts Lettres Techniques Limited 2015 copyright is retained ©

33A ARLINGTON ROAD LONDON NW1 7ES T: (020) 7383 4778 architect@artslettres.com ALL DIMENSIONS MUST BE VERIFIED ON SITE

PROJECT 22 PARK VILLAGE EAST NUMBER PVE 007 SCALE 1:50 @ A3

SUBJECT NORTH ELEVATION/SECTION existing REVISION DATE 02/04/15

revisions

DRAWN BY: AC CHECKED BY: LA