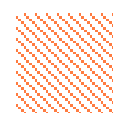
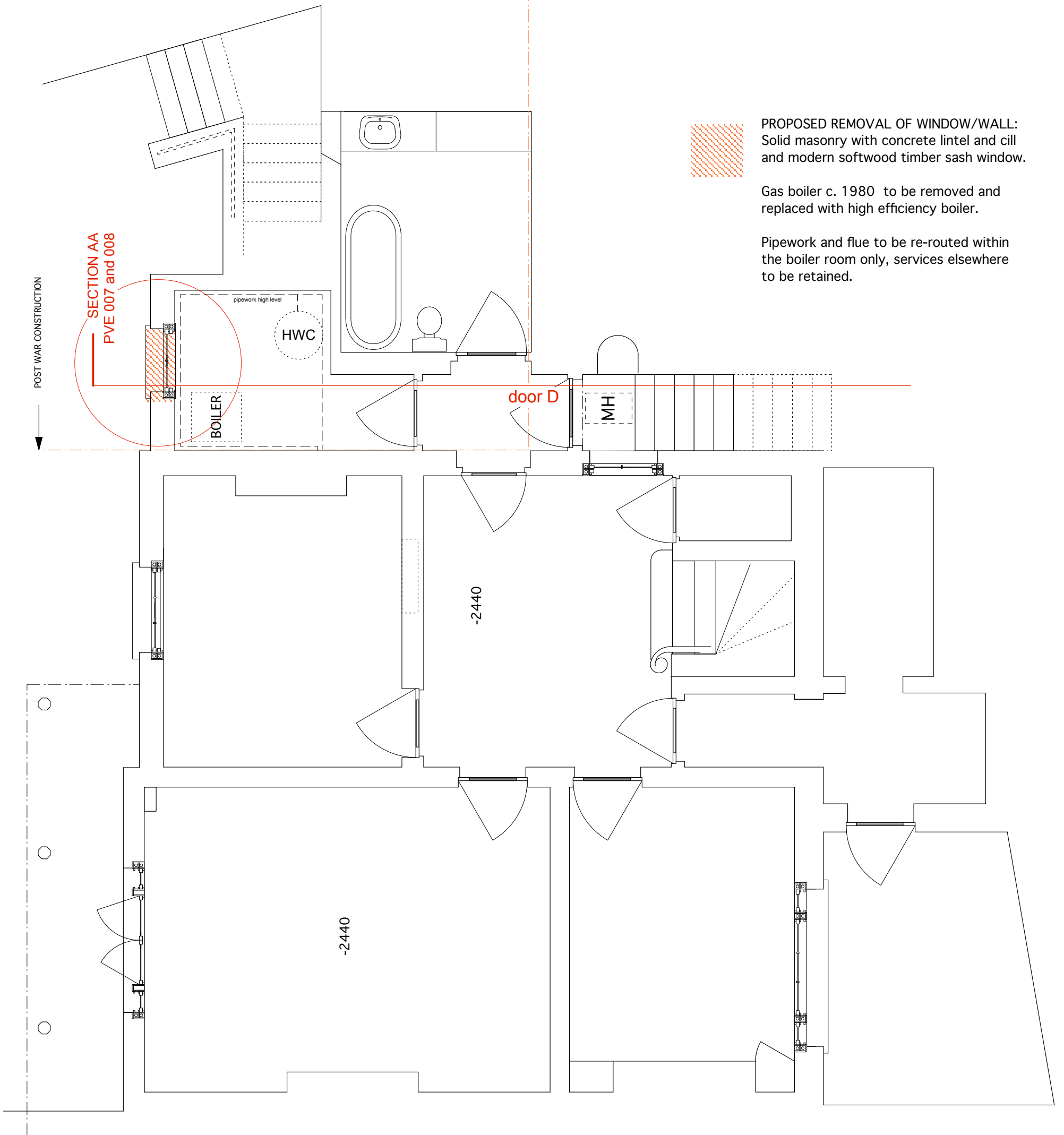


scale 1:50 0.5m 1.0m 1.5m 2.0m 2.5m

POST WAR CONSTRUCTION →



PROPOSED REMOVAL OF WINDOW/WALL:
Solid masonry with concrete lintel and cill
and modern softwood timber sash window.

Gas boiler c. 1980 to be removed and
replaced with high efficiency boiler.

Pipework and flue to be re-routed within
the boiler room only, services elsewhere
to be retained.

arts lettres techniques ARCHITECT Arts Lettres Techniques Limited 2015 copyright is retained ©

33A ARLINGTON ROAD LONDON NW1 7ES T: (020) 7383 4778 architect@artslettres.com ALL DIMENSIONS MUST BE VERIFIED ON SITE

PROJECT 22 PARK VILLAGE EAST NUMBER PVE 002 SCALE 1:50 @ A3

SUBJECT LOWER GROUND PLAN existing REVISION DATE 02/04/15

revisions



DRAWN BY: AC CHECKED BY: LA