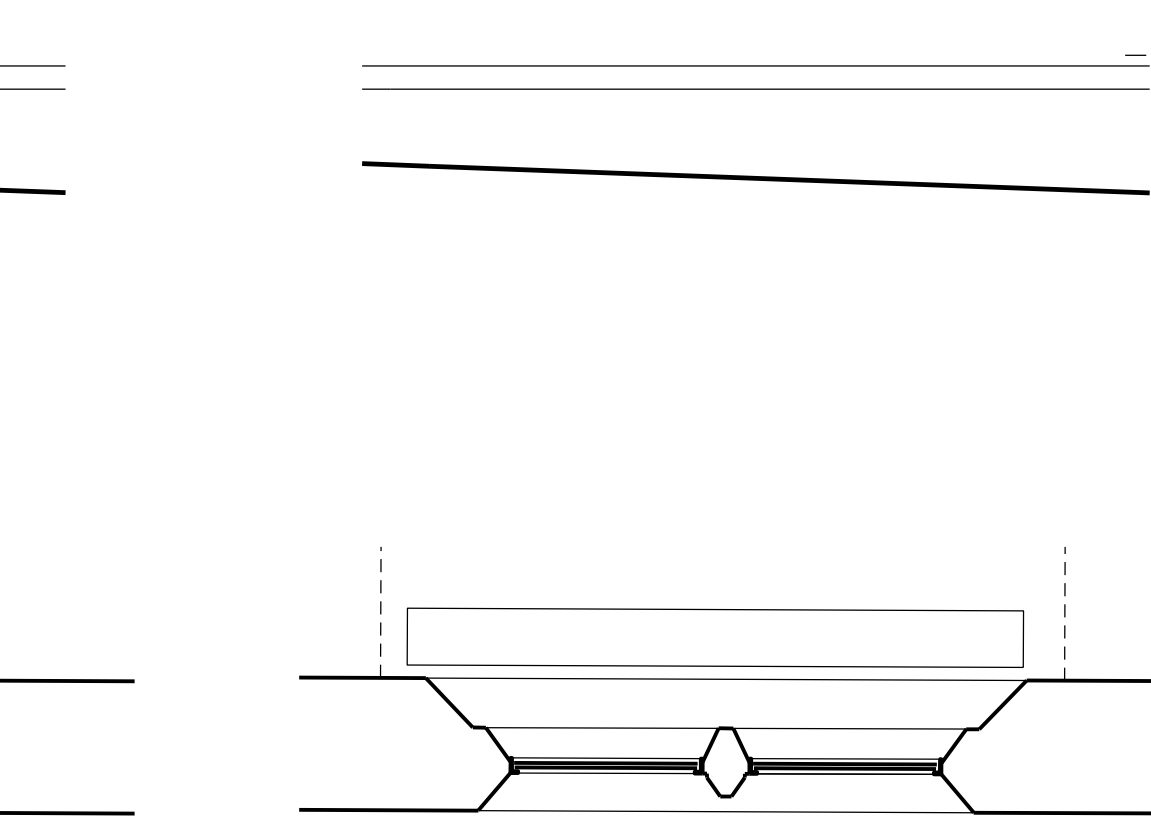
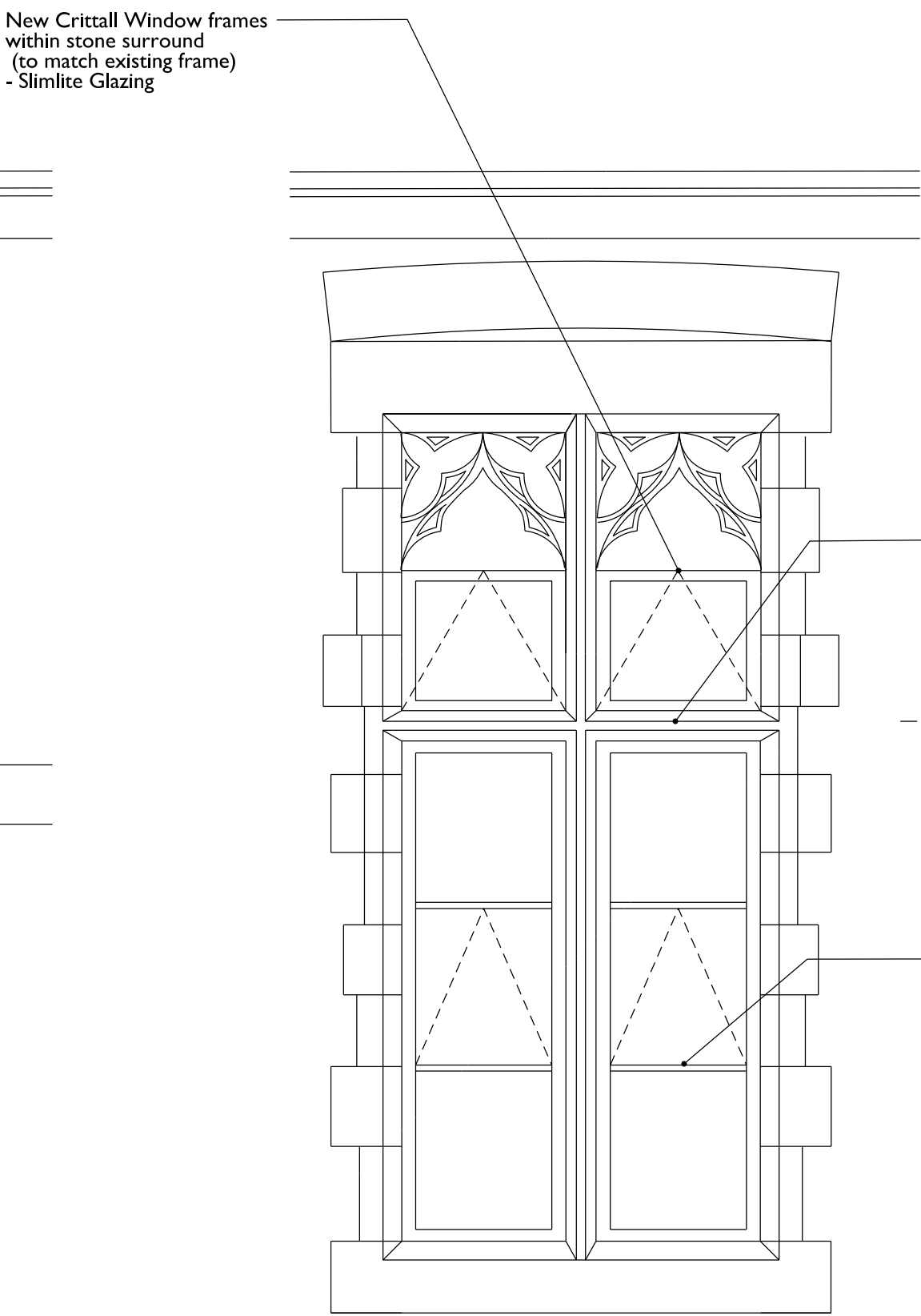


I	W02,W03-Existing
P_201	Scale 1:20



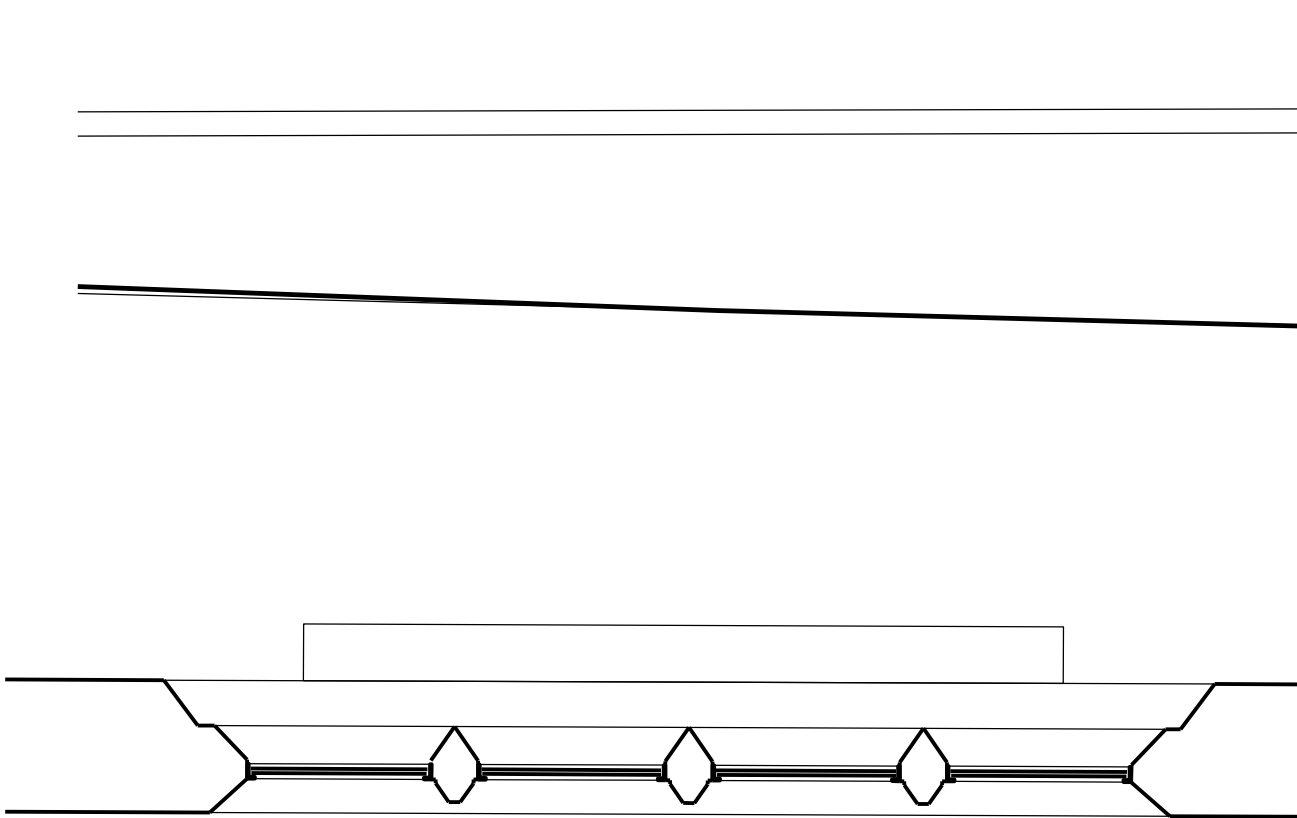
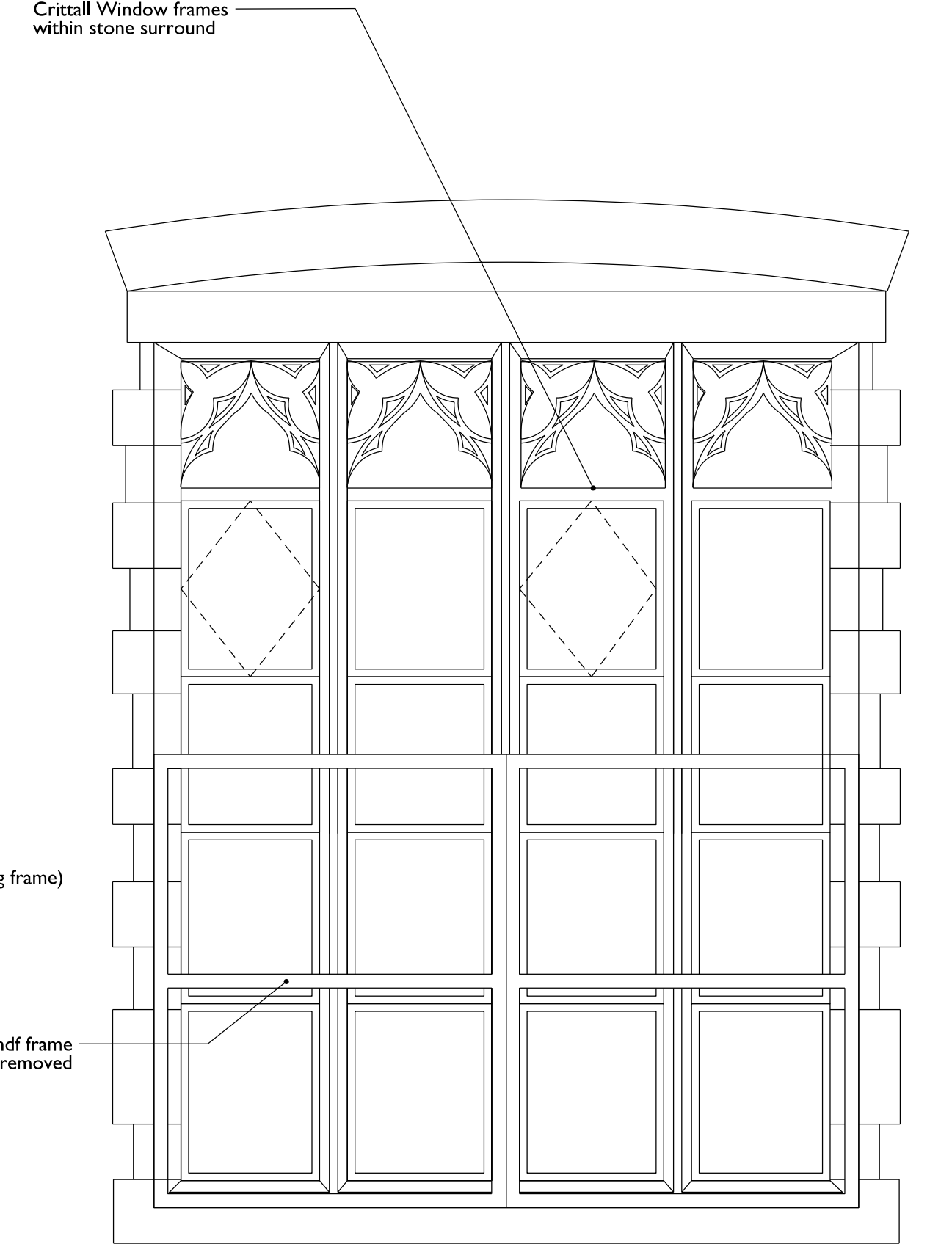
2	W02,W03-Proposed
P_201	Scale 1:20

Stone Mullion raised in line with new mezzanine floor
- Method statement for alteration to be prepared by conservation architect and specialist subcontractor

118.62 - new mezzanine FFL
-- -- -- -- --

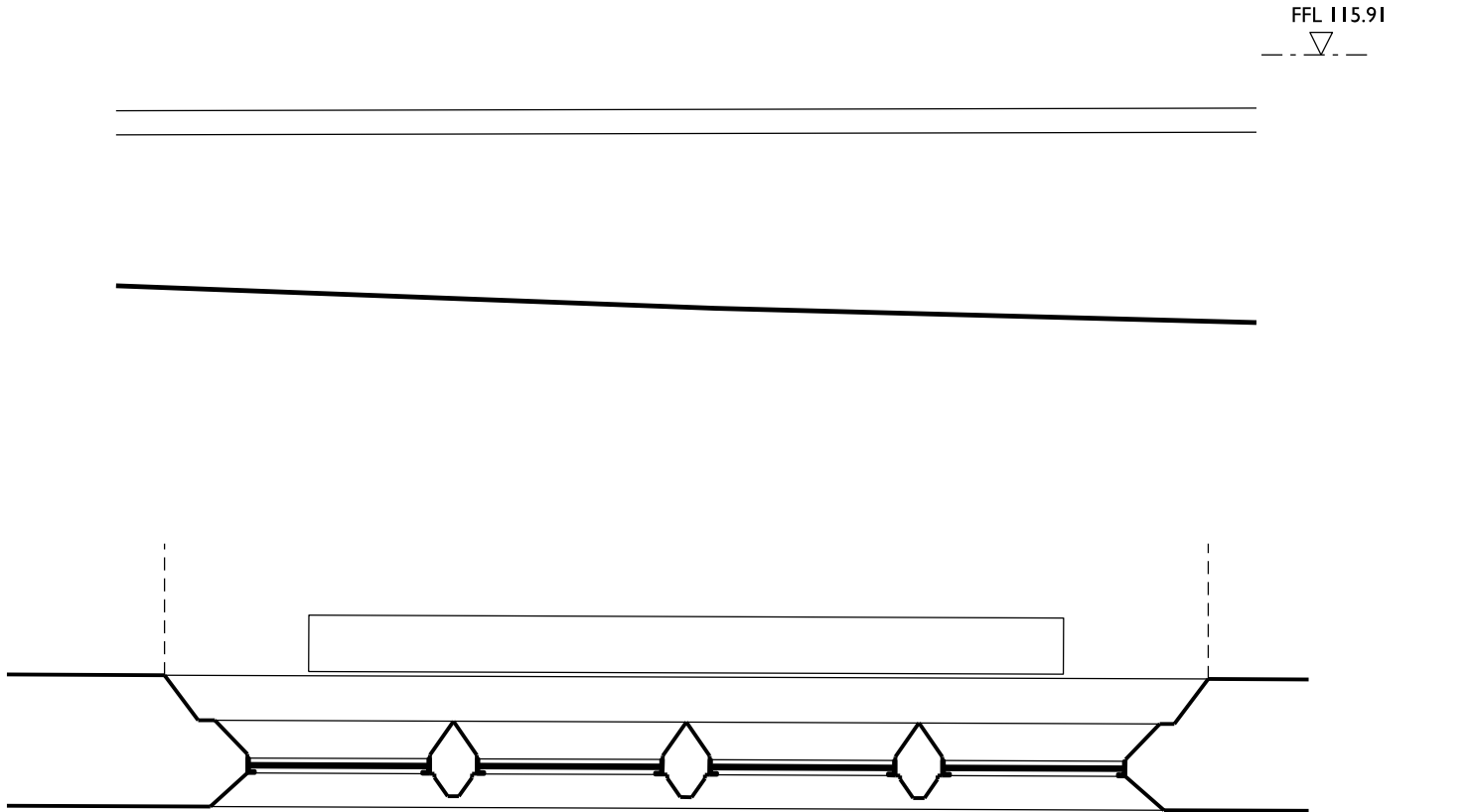
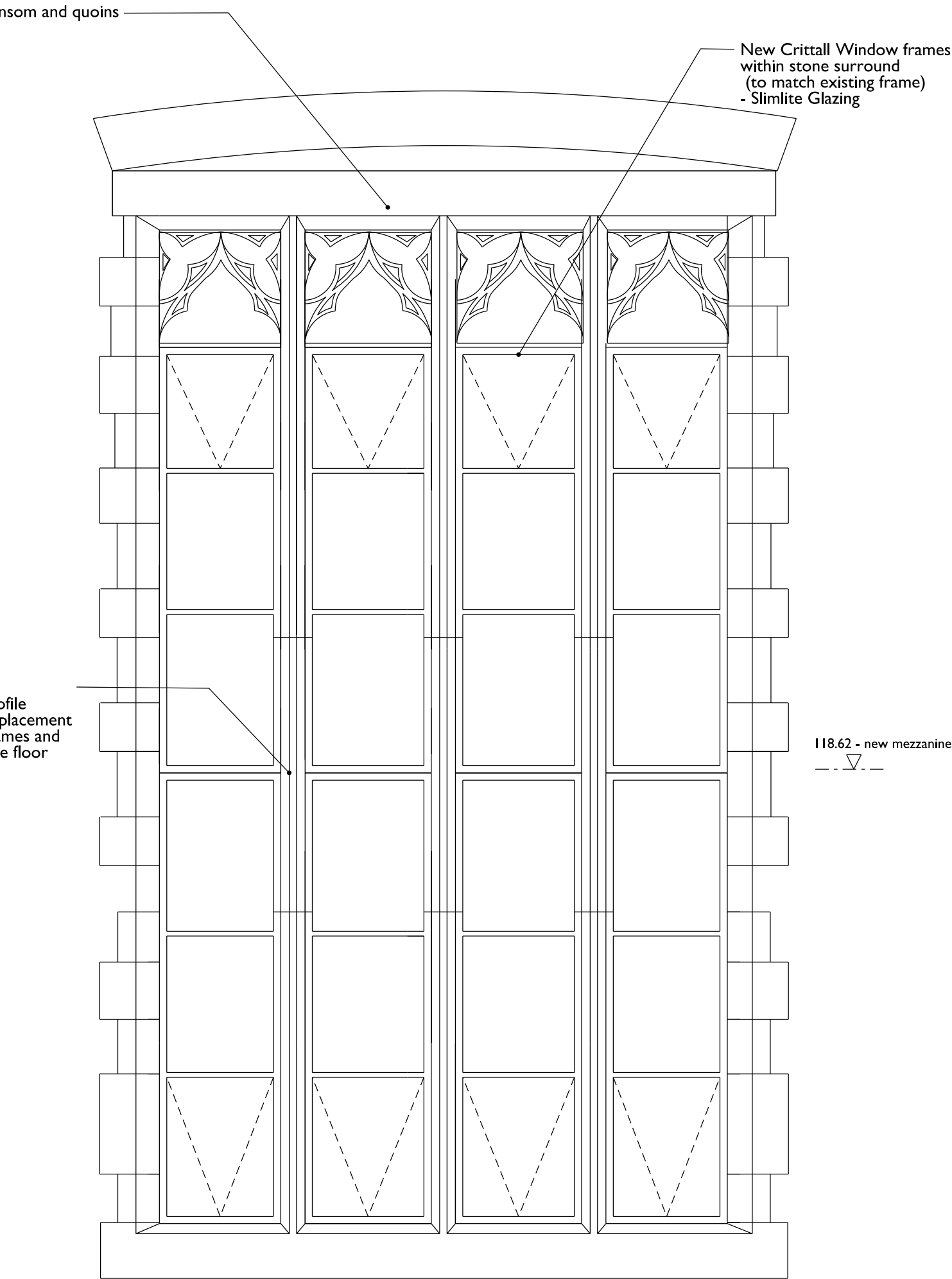
Crittall frame windows(to match existing frame)
-Slimlite Glazing

Grill and frame in front of window to be removed



3	W01-Existing
P_201	Scale 1:20

New oak/stone profile element to take replacement Crittall window frames and incoming mezzanine floor



4	W01-Proposed
P_201	Scale 1:20

Note:
- for Window refurbishment and alterations read in conjunction with Window Schedule P_200
- colour of new window frames tbc following colour analysis
- all new glazing to be Slimlite Glazing - refer to Window Schedule P_200