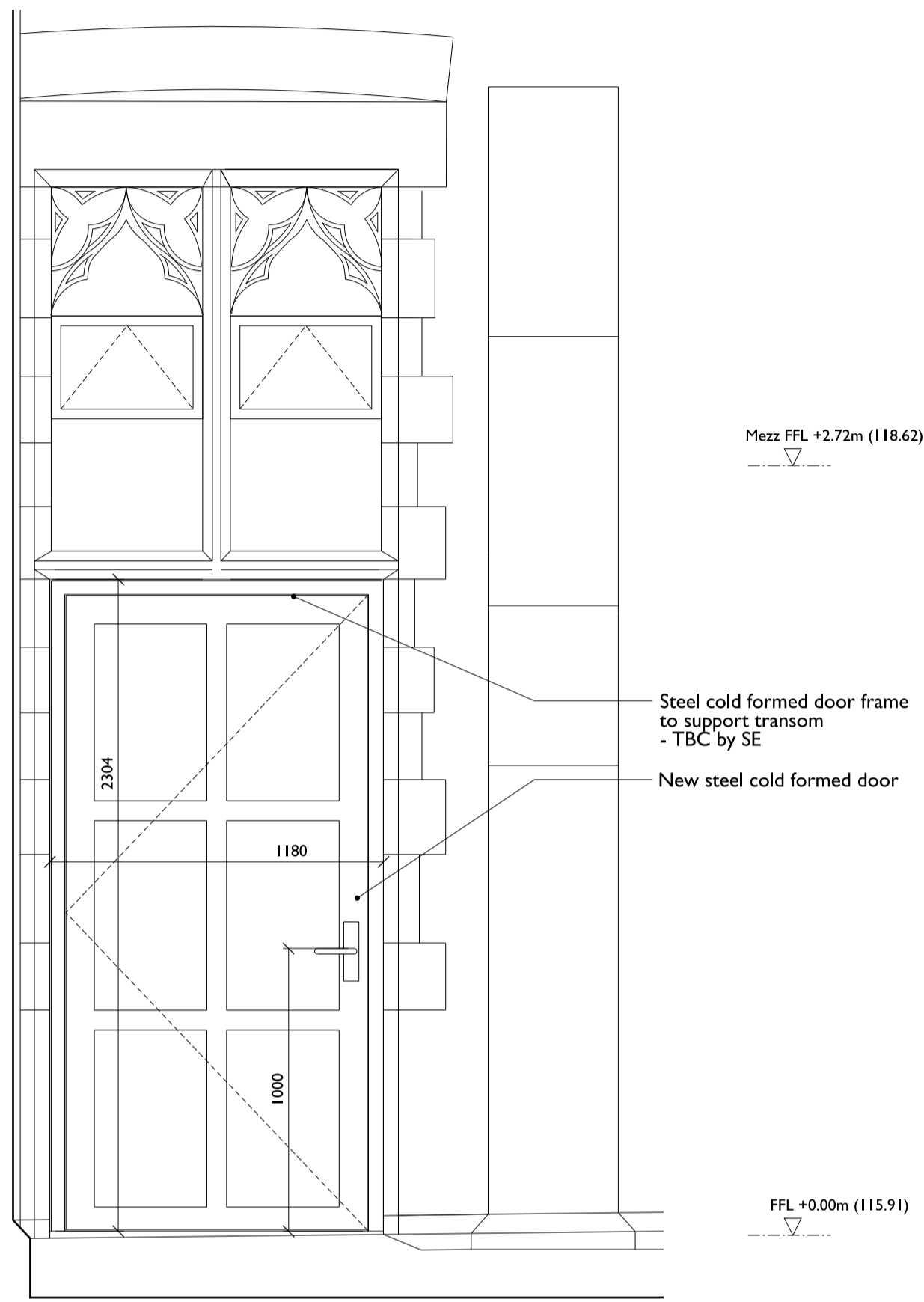
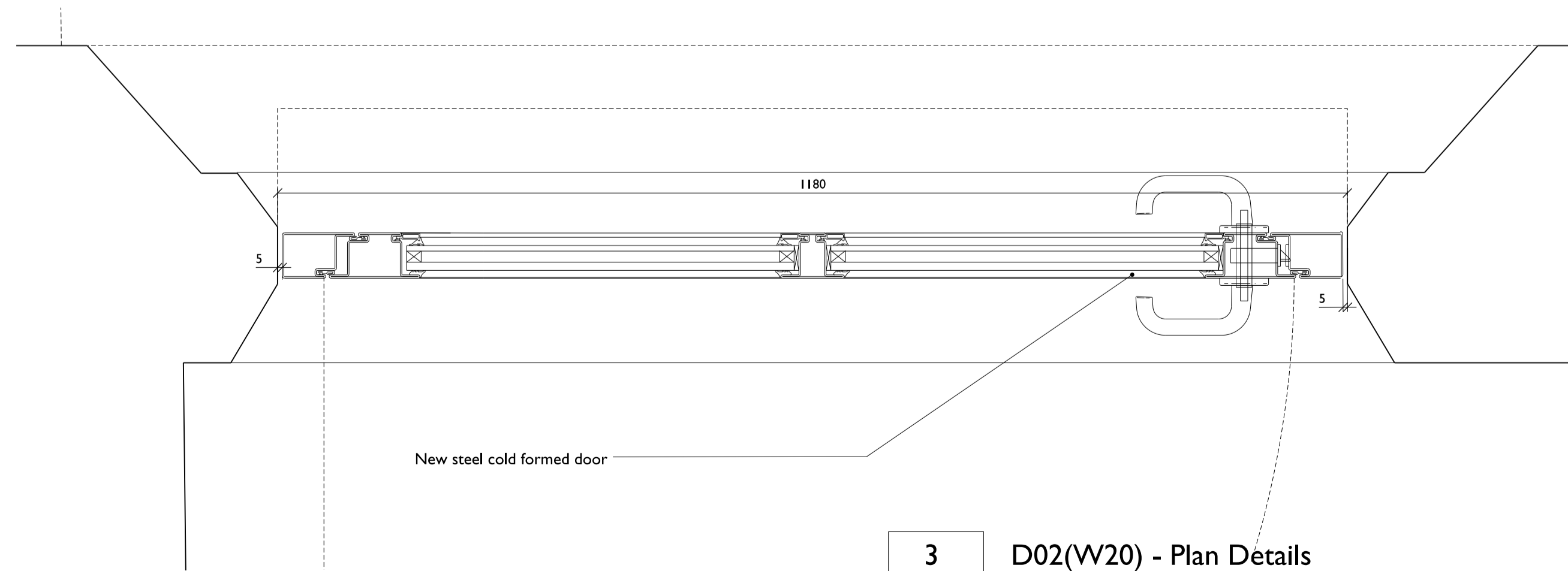


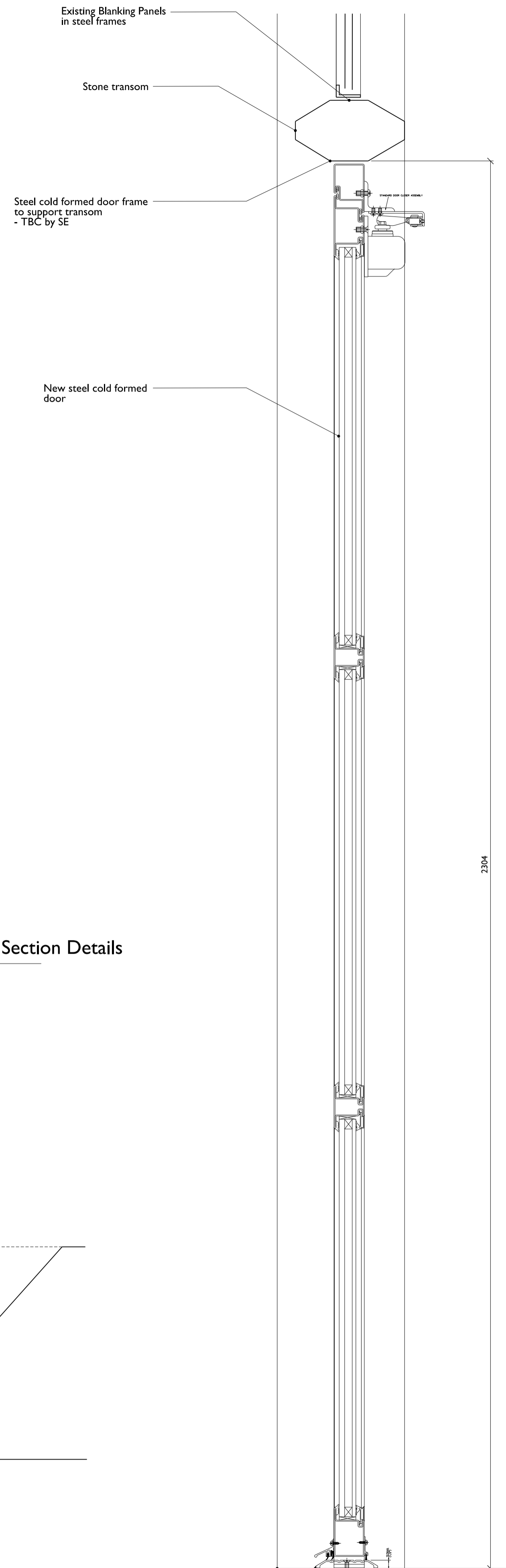
I	D02(W20)-Existing
2610	Scale 1:20/40



2	D02(W20)-Proposed
2610	Scale 1:20/40



3	D02(W20) - Plan Details
2610	Scale 1:5/10



4	D02(W20) - Section Details
2610	Scale 1:5/10

Note:
 - read in conjunction with Window Schedule
 - Stonework: refer to Conservation Architect's statement. Contractor to provide detailed method statement for specialist stoneworks
 - Ironmongery: as per manufacturers specification. Cylinder lock with 2 handles inc. dead lock
 - colour of new window frames tbc following colour analysis