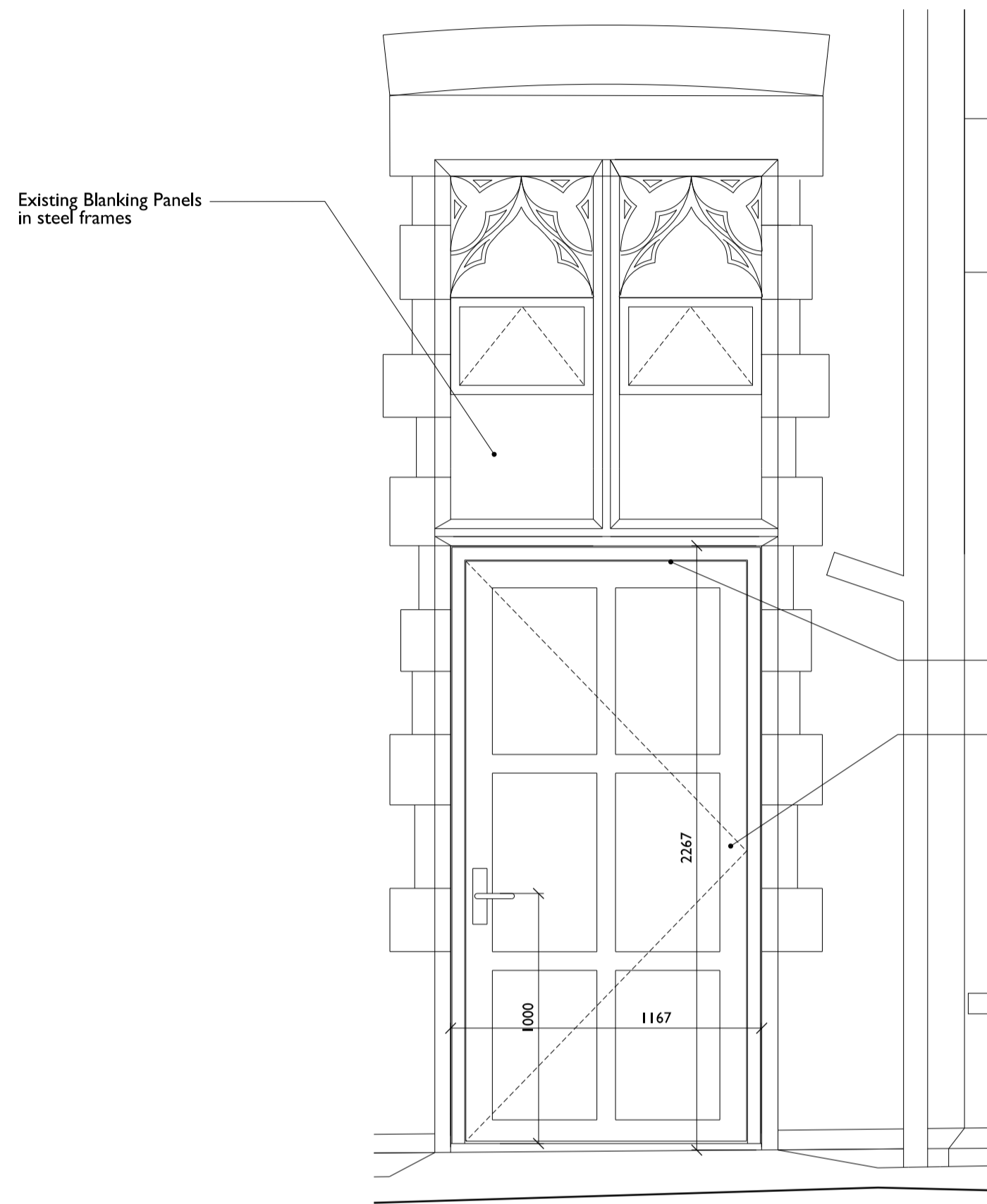


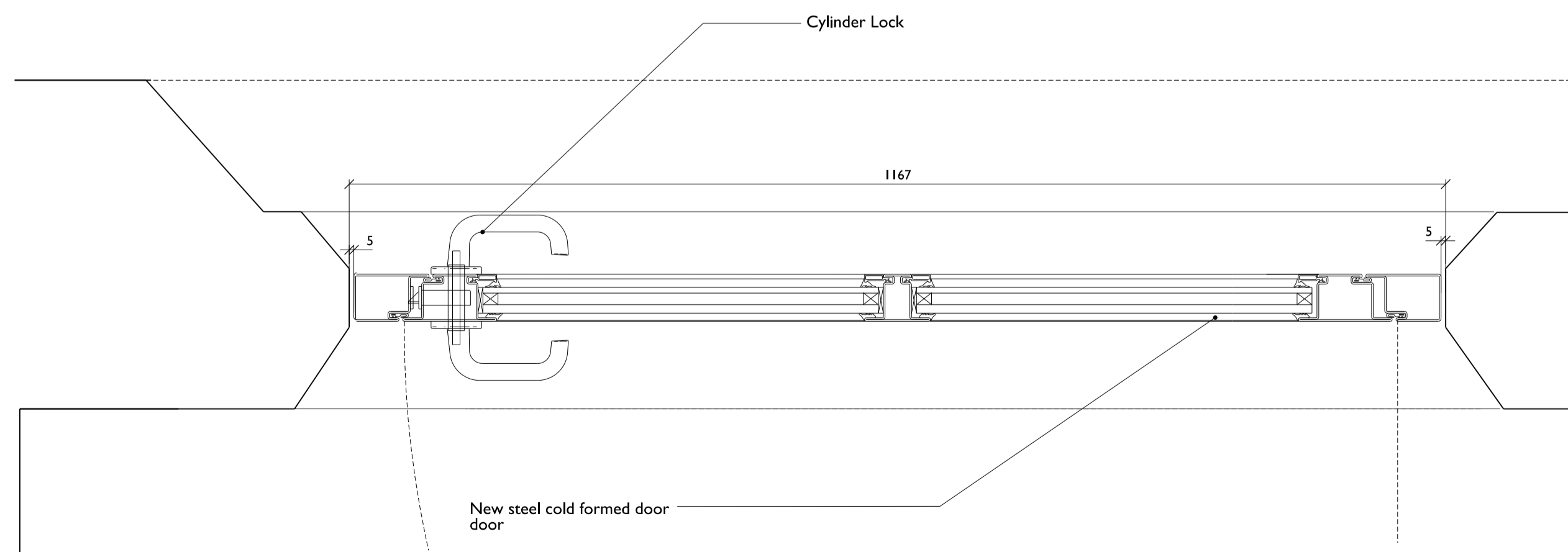
I	D01(W18)-Existing
2605	Scale 1:20/40



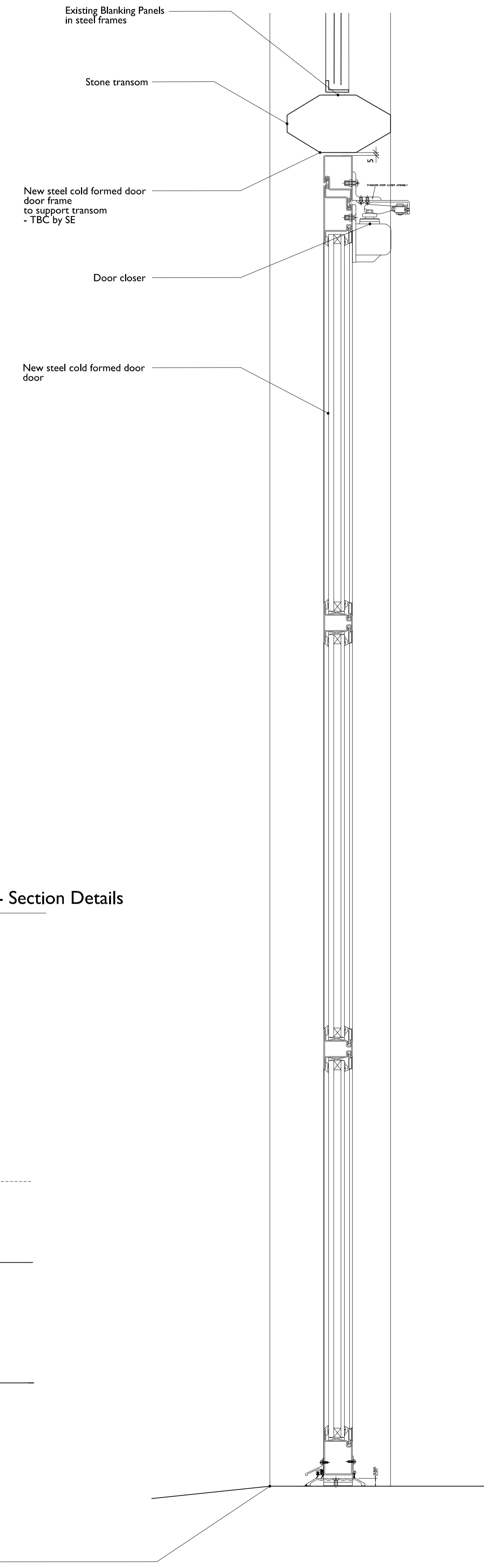
2	D01(W18)-Proposed
2605	Scale 1:20/40

Mezz FFL +2.72m (118.62)

FFL +0.00m (115.91)



3	D01(W18) - Plan Details
2605	Scale 1:5/10



4	D01(W18) - Section Details
2605	Scale 1:5/10

Note:
 - read in conjunction with Window Schedule
 - Stonework: refer to Conservation Architect's statement. Contractor to provide detailed method statement for specialist stoneworks
 - Ironmongery: as per manufacturers specification. Cylinder lock with 2 handles inc. dead lock
 - colour of new window frames tbc following colour analysis