



**Sergison Bates architects<sup>Ltd</sup>**  
**Basement**  
**(Option 1:33 units)**

**Fitzjohns Avenue, NW3**  
**Planning Technical Documents**

Architects	Date	Scale
Sergison Bates architects 34 Clerkenwell Close London EC1R 0AU United Kingdom	28/01/15	1:100@A1 1:200@A3
Tel +44 (0)20 7255 1564 e-mail studio @sergisonbates.co.uk		

**276/4221a**

Revision	
A 24/03/15	General update

Do not scale from this drawing  
All dimensions to be verified on site  
Limited Liability Partnership Registered in England & Wales  
No. OC317501 Registered office as above  
Drawing may be scaled for planning purposes



Sergison Bates architects<sup>Ltd</sup>  
 Lower ground Floor internal layout  
 (Option 1:33 units)

Fitzjohns Avenue, NW3  
 Planning Technical Documents

Architects	Date	Scale
Sergison Bates architects	28/01/15	1:100@A1
34 Clerkenwell Close		1:200@A3
London EC1R 0AU		
United Kingdom		
Tel +44 (0)20 7255 1564		
e-mail studio		
@sergisonbates.co.uk		

# 276/4222a

Revision	
A 24/03/15	General update

Do not scale from this drawing  
 All dimensions to be verified on site  
 Limited Liability Partnership Registered in England & Wales  
 No. OC317501 Registered office as above  
 Drawing may be scaled for planning purposes





Sergison Bates architects LLP  
 Ground Floor internal layout  
 (Option 1:33 units)

Fitzjohns Avenue, NW3  
 Planning Technical Documents

Architects	Date	Scale
Sergison Bates architects	28/11/14	1:100@A1
34 Clerkenwell Close		1:200@A3
London EC1R 0AU		
United Kingdom		
Tel +44 (0)20 7255 1564		
e-mail studio		
@sergisonbates.co.uk		

**276/4223c**

Revision	
C 24/03/15	General update

Do not scale from this drawing  
 All dimensions to be verified on site  
 Limited Liability Partnership Registered in England & Wales  
 No. OC317501 Registered office as above  
 Drawing may be scaled for planning purposes





Sergison Bates architects<sup>LTD</sup>  
 Upper ground Floor internal layout  
 (Option 1:33 units)

Fitzjohns Avenue, NW3  
 Planning Technical Documents

Architects	Date	Scale
Sergison Bates architects	28/01/15	1:100@A1
34 Clerkenwell Close		1:200@A3
London EC1R 0AU		
United Kingdom		

Tel +44 (0)20 7255 1564  
 e-mail studio  
 @sergisonbates.co.uk

# 276/4224a

Revision	
A	24/03/2015 General update

Do not scale from this drawing  
 All dimensions to be verified on site  
 Limited Liability Partnership Registered in England & Wales  
 No. OC317501 Registered office as above  
 Drawing may be scaled for planning purposes



**Sergison Bates architects<sup>LTD</sup>**  
**First Floor internal layout**  
**(Option 1:33 units)**  
 Fitzjohns Avenue, NW3  
 Planning Technical Documents

Architects	Date	Scale
Sergison Bates architects 34 Clerkenwell Close London EC1R 0AU United Kingdom	28/01/15	1:100@A1 1:200@A3
Tel +44 (0)20 7255 1564 e-mail studio @sergisonbates.co.uk		

**276/4225d**

Revision	Description
D 24/03/15	General update

Do not scale from this drawing  
 All dimensions to be verified on site  
 Limited Liability Partnership Registered in England & Wales  
 No. OC317501 Registered office as above  
 Drawing may be scaled for planning purposes





**Sergison Bates architects<sup>LTD</sup>**  
**Second Floor internal layout**  
**(Option 1:33 units)**

**Fitzjohns Avenue, NW3**  
**Planning Technical Documents**

Architects	Date	Scale
Sergison Bates architects	28/01/15	1:100@A1
34 Clerkenwell Close		1:200@A3
London EC1R 0AU		
United Kingdom		

Tel +44 (0)20 7255 1564  
 e-mail studio  
 @sergisonbates.co.uk

**276/4226a**

Revision	
A 24/03/15	General update

Do not scale from this drawing  
 All dimensions to be verified on site  
 Limited Liability Partnership Registered in England & Wales  
 No. OC317501 Registered office as above  
 Drawing may be scaled for planning purposes



**Sergison Bates architects<sup>Ltd</sup>**  
**Third floor internal layout**  
**(Option 1:33 units)**

**Fitzjohns Avenue, NW3**  
**Planning Technical Documents**

Architects	Date	Scale
Sergison Bates architects	28/01/15	1:100@A1
34 Clerkenwell Close		1:200@A3
London EC1R 0AU		
United Kingdom		
Tel +44 (0)20 7255 1564		
e-mail studio		
@sergisonbates.co.uk		

**276/4227a**

Revision	
A 24/03/15	General update

Do not scale from this drawing  
All dimensions to be verified on site  
Limited Liability Partnership Registered in England & Wales  
No. OC317501 Registered office as above  
Drawing may be scaled for planning purposes





**Sergison Bates architects<sup>LTD</sup>**  
**Fourth floor internal layout**  
**(Option 1:33 units)**

**Fitzjohns Avenue, NW3**  
**Planning Technical Documents**

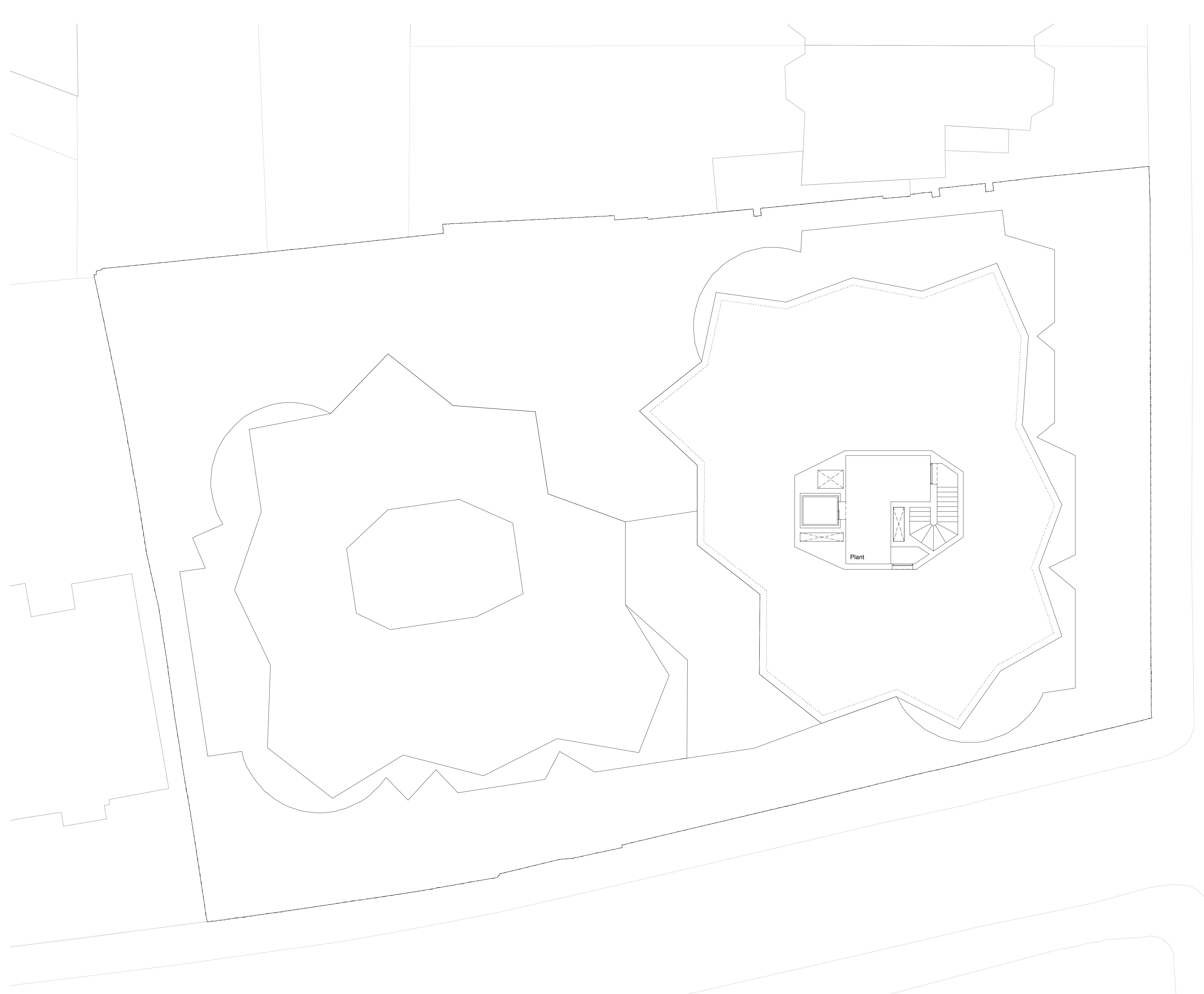
Architects	Date	Scale
Sergison Bates architects	28/01/15	1:100@A1
34 Clerkenwell Close		1:200@A3
London EC1R 0AU		
United Kingdom		
Tel +44 (0)20 7255 1564		
e-mail studio		
@sergisonbates.co.uk		

**276/4228c**

Revision	
C 20/03/15	General update

Do not scale from this drawing  
All dimensions to be verified on site  
Limited Liability Partnership Registered in England & Wales  
No. OC317501 Registered office as above  
Drawing may be scaled for planning purposes





**Sergison Bates architects<sup>Ltd</sup>**  
**Roof plan**  
**(Option 1:33 units)**

**Fitzjohns Avenue, NW3**  
**Planning Technical Documents**

Architects	Date	Scale
Sergison Bates architects	28/01/15	1:100@A1
34 Clerkenwell Close		1:200@A3
London EC1R 0AU		
United Kingdom		

Tel +44 (0)20 7255 1564  
e-mail studio  
@sergisonbates.co.uk

# 276/4230a

Revision  
A 20/03/15 General update

Do not scale from this drawing  
All dimensions to be verified on site  
Limited Liability Partnership Registered in England & Wales  
No. OC317501 Registered office as above  
Drawing may be scaled for planning purposes