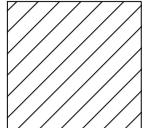
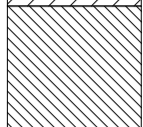
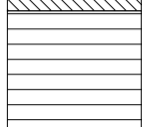
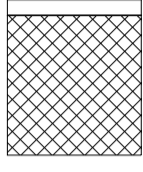
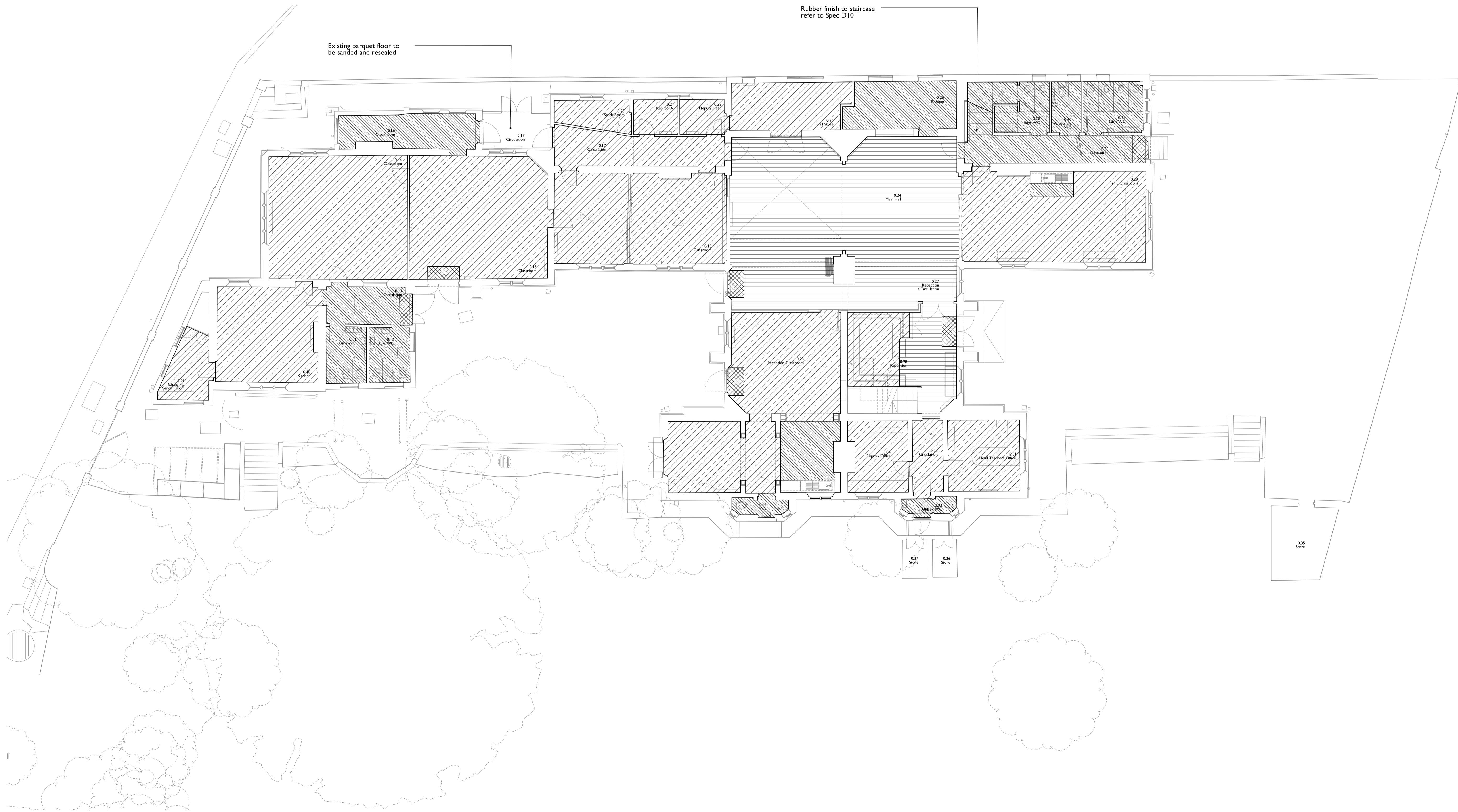


I	Ground Floor Proposed Floor Finishes
1250	Scale 1:100/200

Note:
 - refer to Refurbishment Schedule for details of scope individual room refurb
 - Floor finishes to be renewed in all internal areas throughout the school with a replacement of the existing type of material in accordance with the specification (except where shown otherwise)
 - see DWG 2200 Detail 2 for Hall timber floor build up

	Carpet	- Spec D10/200
	Rubber Tiles (staircase rubber)	- Spec D10/100-140 - Spec D10/120
	Timber Hall Floor	- Spec D10/500
	Barrier Carpet	- Spec D10/300



Project
CHRIST CHURCH PRIMARY SCHOOL
 Christchurch Hill, London NW3 1JH
 Drawing Title

GROUND FLOOR - FLOOR FINISHES PLAN - PROPOSED

Project Number
537

Scale @ A1/A3
1 : 100
1 : 200

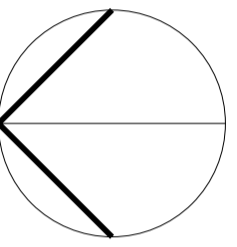
Status
Billing

Revision
B

Date
20.02.15

Revision Notes
 Write a description of what has changed here
 and here if needed

SCABAL
 ARCHITECTS
 TD. © 25 Hatton Garden
 London EC1N 8BQ
 UK
 t: +44 (0) 20 7033 8788
 e team@scabal.net



COPYRIGHT ©

All dimensions to be checked on site prior to commencement of work
 Discrepancies between drawings and information to be referred to CA without delay