

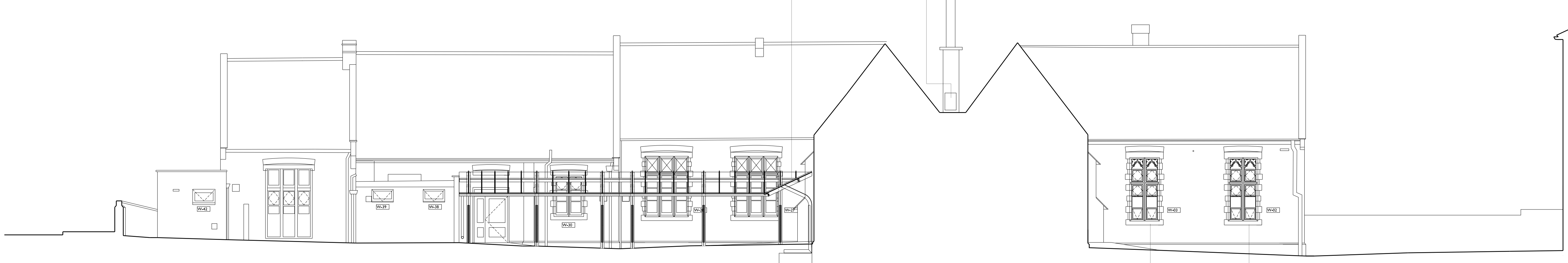
Note:
 - for details of Demolition works refer to DWG 0500/0510
 - refer to Refurbishment Schedule for details of scope of individual room refurb
 - read in conjunction with Floor Finishes DWGs 1250/1260
 - read in conjunction with M+E Info / SE Info
 - read in conjunction with Door and Window Schedule



3 Section 6-6
 1210 Scale 1:100

Existing condenser
 New self-cleaning glass canopy to playground
 - refer to DWG 3200
 New Door D03 in new partition wall Type C
 -refer to DWG 1700/2210
 New condenser
 New self-cleaning glass canopy to playground
 - refer to DWG 3200

- W02/W03 refer to DWG 2520
 Existing double doors to hall retained
 New reception desk - refer to DWG 2250
 New partition wall Type C -refer to DWG 1700/2210



2 Elevation 5-5
 1210 Scale 1:100

- W02/W03 refer to DWG 2520



1 Elevation 4-4
 1210 Scale 1:100

New entrance gate and steps to private flats
 - refer to DWG 3100

Main school entrance gate

Project
CHRIST CHURCH PRIMARY SCHOOL
 Christchurch Hill, London NW3 1JH
 Drawing Title

Elevation 4-4/Elevation 5-5/Section 6-6 - Proposed

Project Number
537

Drawing Number
1210

Scale @ A1/A3
1 : 100
1 : 200

Status
Billing

Revision
A

Date
20.02.15

Revision Notes
 Write a description of what has changed here and here if needed

SCABAL
 ARCHITECTS LTD.
 25 Hatton Garden
 London EC1N 8BQ
 UK
 t: +44 (0) 20 7033 8788
 e: team@scabal.net

COPYRIGHT ©
 All dimensions to be checked on site prior to commencement of work
 Discrepancies between drawings and information to be referred to CA without delay