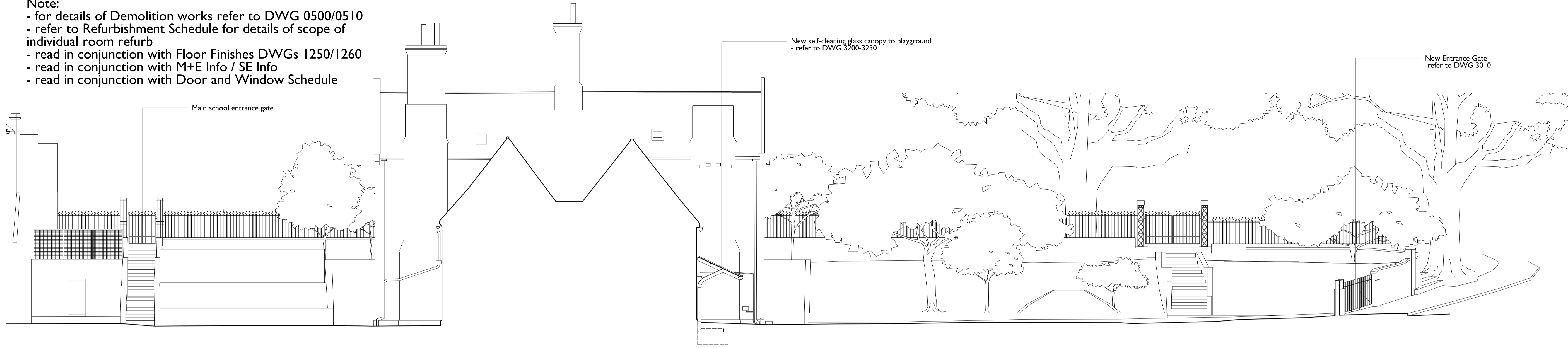


Note:
 - for details of Demolition works refer to DWG 0500/0510
 - refer to Refurbishment Schedule for details of scope of individual room refurb
 - read in conjunction with Floor Finishes DWGs 1250/1260
 - read in conjunction with M+E Info / SE Info
 - read in conjunction with Door and Window Schedule



3 Elevation 3-3
 1200 Scale 1:100



2 Section 2-2
 1200 Scale 1:100



1 Elevation 1-1
 1200 Scale 1:100

SCABAL ARCHITECTS LTD.
 25 Hatton Garden
 London EC1N 8BQ
 UK
 t: +44 (0) 20 7033 8788
 e: team@scabal.net

Project
CHRIST CHURCH PRIMARY SCHOOL
 Christchurch Hill, London NW3 1JH
 Drawing Title

Elevation 1-1/Section 2-2/Elevation 3-3-Proposed

Project Number	537	Drawing Number	1200	Status	Billing	Date	27.02.15	Revision Notes	Write a description of what has changed here and here if needed
Scale @ A1/A3	1:100	1:200							

COPYRIGHT ©
 All dimensions to be checked on site prior to commencement of work
 Discrepancies between drawings and information to be referred to CA without delay