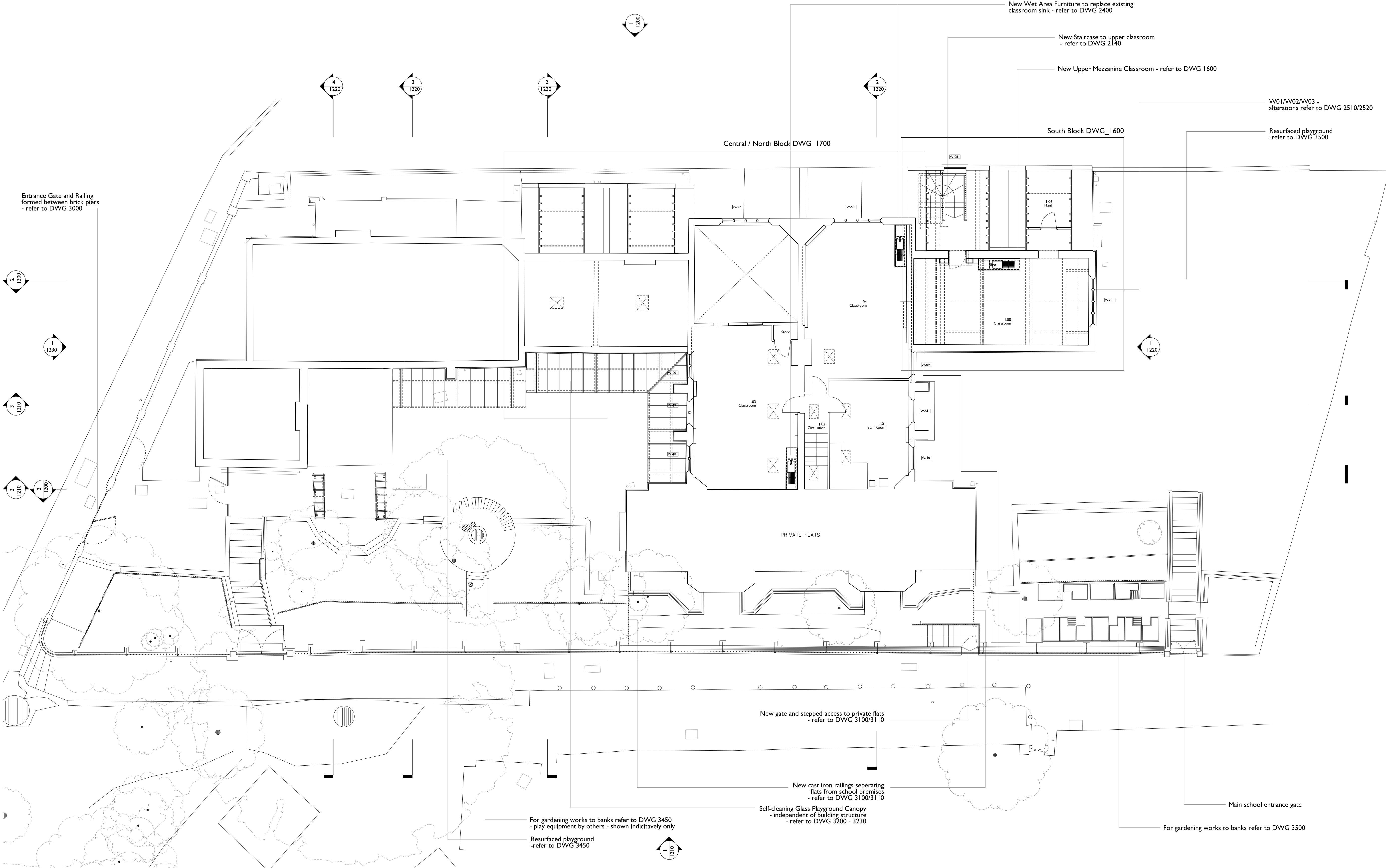


- Note:
- for details of Demolition works refer to DWG 500/510
  - refer to Refurbishment Schedule for details of scope individual room refurb
  - read in conjunction with Floor Finishes DWGs 1250/1260
  - read in conjunction with M+E Info / SE Info
  - read in conjunction with Door and Window Schedule



Project  
**CHRIST CHURCH PRIMARY SCHOOL**  
Christchurch Hill, London NW3 1JH

Drawing Title

**FIRST FLOOR PLAN - PROPOSED**

Project Number  
**537**

Scale @ A1/A3  
**1 : 100**  
**1 : 200**

Status  
**Billing**

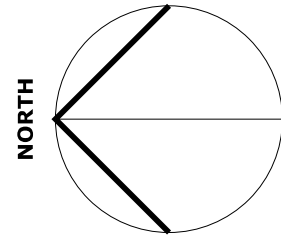
Revision  
**B**

Date  
**20.02.15**

Revision Notes

Write a description of what has changed here and here if needed

COPYRIGHT ©



**SCABAL**  
TUDIO ULLINAN<sup>ND</sup> ARCHITECTS<sup>TD.©</sup>  
25 Hutton Garden  
London EC1N 8BQ  
UK  
t: +44 (0) 20 7033 8788  
e team@scabal.net