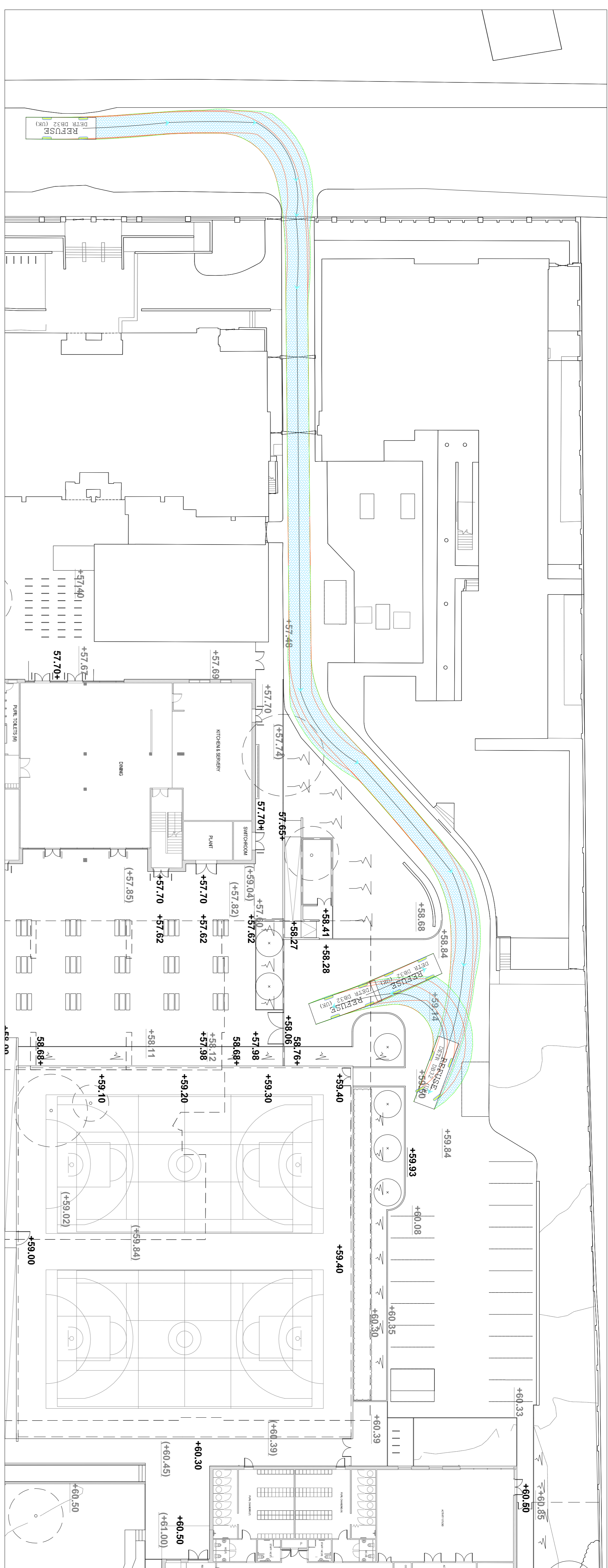


GENERAL NOTES

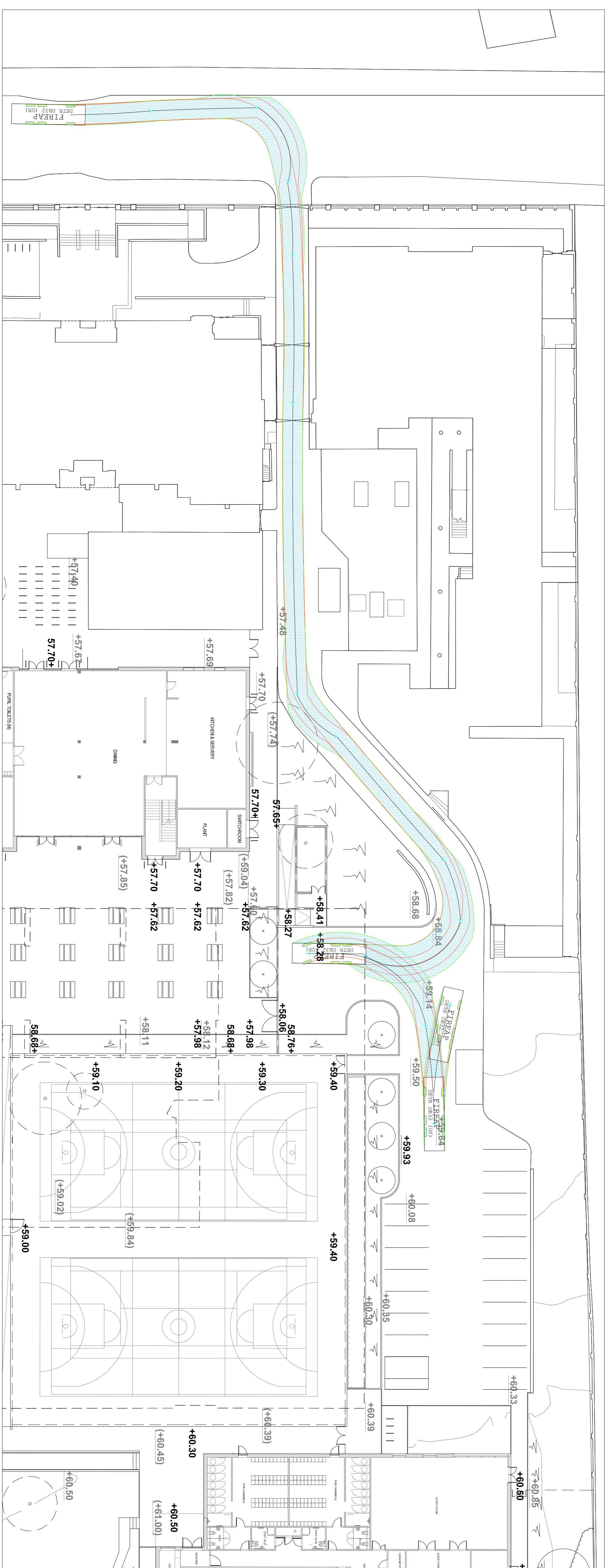
This drawing to be read in conjunction with all relevant drawings & specifications. It is the responsibility of the contractor to ensure that the drawing are to ensure that it is the latest revision. No drawing is to be used for construction unless it is noted on the drawing that it is issued for construction.

DRAWING NOTES

| CDM Regulations | | | |
|-----------------|-------------|--------------|-----------------|
| Hazards | CDM Advisor | CDM Approved | Site Assessment |
| | | | |



Refuse Vehicle access to main entrance



Fire appliance access to main entrance

REVISIONS

| REV | DATE | BY | DESCRIPTION | CHK |
|-----|------|----|-------------|-----|
| | | | | |

CLIENT:

Wates House
Station Approach
Leatherhead
Surrey.
KT22 7SW
T +44 (0) 1372 861000
F +44 (0) 1372 861131
www.wates.co.uk



PROJECT TITLE:
Hampstead Secondary school
Westbere Road

DRAWING TITLE:
Swept path analysis sheet 01
at completion

| DATE: | DRAWN: | CHECKED: | APPROVED: |
|-------|--------|----------|-----------|
| | JET | | |

SCALE: 1:250@ A1

DRAWING No.: 517.15.001

Rev: A00