

30/03/2015 15:18:44 \\server\Data\Evolve\STARBUCKS COFFEE\Shux FY15\Starbucks - 112-116 New Oxford Street, London5, DID12164 - NEW OXFORD STREET - DID SET - 27-03-2015.rvt



Starbucks Coffee Company
 Building 4, Chiswick Park
 566 Chiswick High Road
 London, W4 5YE

These Drawings and Specifications are confidential and shall remain the sole property of Starbucks Corporation, which is the owner of the copyright in this work. They shall not be reproduced (in whole or in part), shared with third parties or used in any manner on other projects or extensions to this project without the prior written consent of Starbucks Corporation. These drawings and specifications are intended to express Design Intent for a prototypical Starbucks store (which is subject to change at anytime) and do not reflect actual site conditions. Neither party shall have any obligation nor liability to the other (except as stated above) until a written agreement is fully executed by both parties.

Architect of Record

This drawing is a Design Development Document. Site specific modifications made under the responsible charge of the Architect and/or Engineer-of-Record will be required prior to using this document for Bidding, Permitting, or Construction.

Revision Schedule

Rev	Date	By	Description

Project Name:
 STARBUCKS - NEW OXFORD STREET
 112-116 NEW OXFORD STREET,
 LONDON, WC1A 1HH

Store #: 12214
Project #: 08163-035
Concept: MCS
Palette: REG MODERN
Issue Date: 19 - 02 - 2015
Design Manager: LEON FIELDING
LEED® AP: N/A
Production Designer: GD / EVOLVE
Checked by: LF

Sheet Title:
 EXTERIOR ELEVATIONS
 Scale: As indicated

Sheet Number:
 A-2001

Design Documents Only - Not Intended for Construction

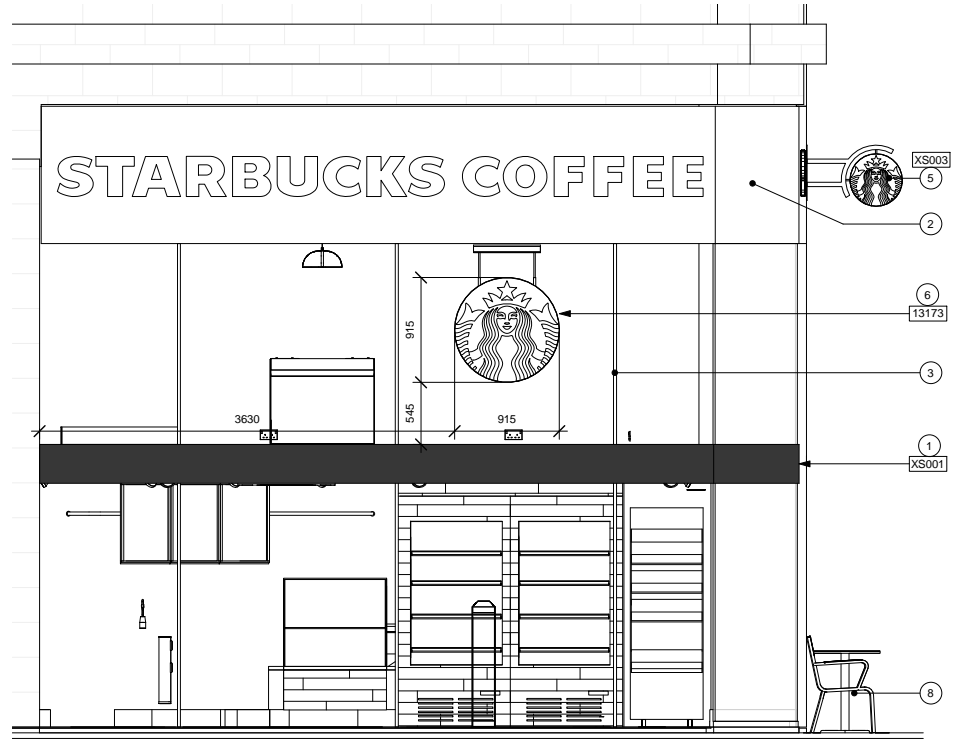
SHEET NOTES

1. NEW VINYL STRIP TO GLAZING WHERE FIRST SLAB IS VISIBLE THROUGH GLAZING TO CONCEAL EDGE OF FLOOR SLAB. MATCH TO DULUX 50B608/021
2. REMOVE LOGO AND MAKE GOOD, REPAINT FASCIA WITH DULUX 50B608/021
3. SEAL METAL CLADDING TO INSIDE OF STORE TO PREVENT RUSTING, MATT FINISH.
4. SPRAY ENTRANCE DOOR AND REPLACE TOP DOOR TRIM WHERE DAMAGED. RENEW STORE FRONT GLAZING SILICON TRIMS.
5. NEW WIRING TO PROJECTING SIGN (CURRENTLY NOT WORKING) ASSET TEAM TO CONFIRM ILLUMINATION IS PERMITTED.
6. NEW 915MM INTERNALLY ILLUMINATED ROUNDELS TO EACH ELEVATION - SUSPENDED FROM CEILING - NEW VINYL TO PROJECTION SIGNS. (MAKE SURE THE LOGO IS VISIBLE AND NOT COVERED BY THE VINYL STRIP ABOVE)
7. NEW VINYL STRIP ON EXISTING BLUE GLASS. ASSET TEAM TO CONFIRM IS PERMITTED.
8. REMOVE EXISTING SEATS & TABLES

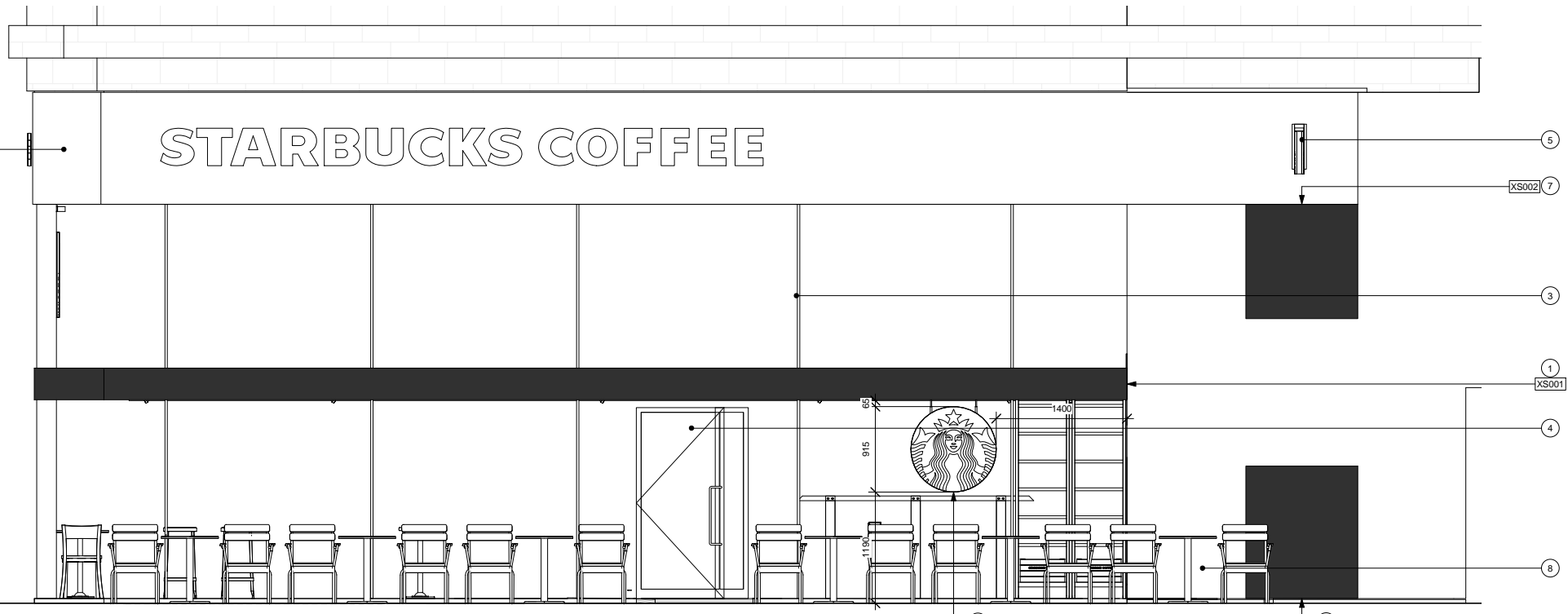
EXTERIOR ELEVATION NOTES

- A. GENERAL CONTRACTOR TO COORDINATE AND SCHEDULE SIGNAGE INSTALLATION WITH THE SIGNAGE CONTRACTOR PROVIDING A MINIMUM SCHEDULING NOTICE OF 4 WEEKS AND 1 WEEK PRIOR TO SCHEDULED DATE OF INSTALLATION. STARBUCKS CONSTRUCTION MANAGER TO PROVIDE GENERAL CONTRACTOR WITH SIGNAGE CONTRACTOR CONTACT INFORMATION.
- B. GENERAL CONTRACTOR SHALL COORDINATE WITH ELECTRICAL CONTRACTOR TO FURNISH AND INSTALL ELECTRICAL CIRCUITS INCLUDING ALL CONDUIT, WIRE, CONNECTIONS, AND BREAKER AT PANEL BOARD NECESSARY TO SERVE SIGNAGE.
- C. GENERAL CONTRACTOR TO PROVIDE FIRE TREATED WOOD STUD BLOCKING, OR EQUIVALENT TO SUPPORT SIGNAGE.
- D. SIGNAGE CONTRACTOR SHALL VERIFY SIZE AND LOCATION OF ANY AND ALL ALLOWABLE MONUMENT OR POLE SIGNAGE WITH LANDLORD AND PROVIDE SHOP DRAWING(S) PRIOR TO FABRICATION TO STARBUCKS DESIGNER FOR APPROVAL.
- E. SIGNAGE CONTRACTOR TO INSTALL SIGNAGE IN COMPLIANCE WITH LOCAL CODES AND OBTAIN PERMIT AND LANDLORD APPROVAL.
- F. SIGNAGE CONTRACTOR TO SUPPLY SHOP DRAWINGS TO STARBUCKS CONSTRUCTION MANAGER AND TO THE GENERAL CONTRACTOR AS NEEDED. GENERAL CONTRACTOR TO NOTIFY STARBUCKS CONSTRUCTION MANAGER IMMEDIATELY IF SHOP DRAWINGS OR INSTALLATION IS IN DISCREPANCY WITH STARBUCKS ARCHITECTURAL DRAWINGS.
- G. GENERAL CONTRACTOR TO CLEAN, PATCH AND REPAIR EXISTING EXTERIOR AS REQUIRED.

SIGNAGE SCHEDULE - "S"					
DESIGN ID	COUNT	DESCRIPTION	RESP.	BULB	COMMENTS
SIGNAGE - DISK					
13173	2	SIGN - DISK DF ILLUMINATED SUSPENDED EVOLVED - 36IN 915MM	SBUX		
XS003	1	EXTERNAL BLADE SIGN TO BE RE-LAMPED WITH NEW LEDS	SBUX		
SIGNAGE - VINYL					
XS001	1	NEW VINYL STRIP TO GLAZING WHERE FIRST FLOOR SLAB IS VISIBLE THROUGH GLAZING TO CONCEAL EDGE OF FLOOR SLAB. TO MATCH DULUX 50B6 08/021	SBUX		
XS002	1	NEW VINYL STRIP ON EXISTING BLUE GLASS	SBUX		ASSET TEAM TO CONFIRM IF PERMITTED



2 PROPOSED SIDE EXTERIOR ELEVATION.
 Scale: 1 : 30



1 Copy of PROPOSED FRONT EXTERIOR ELEVATION
 Scale: 1 : 30