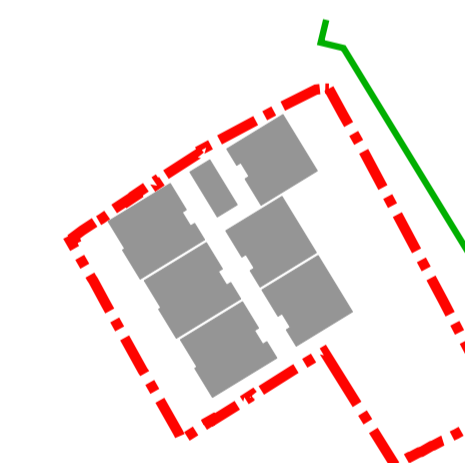
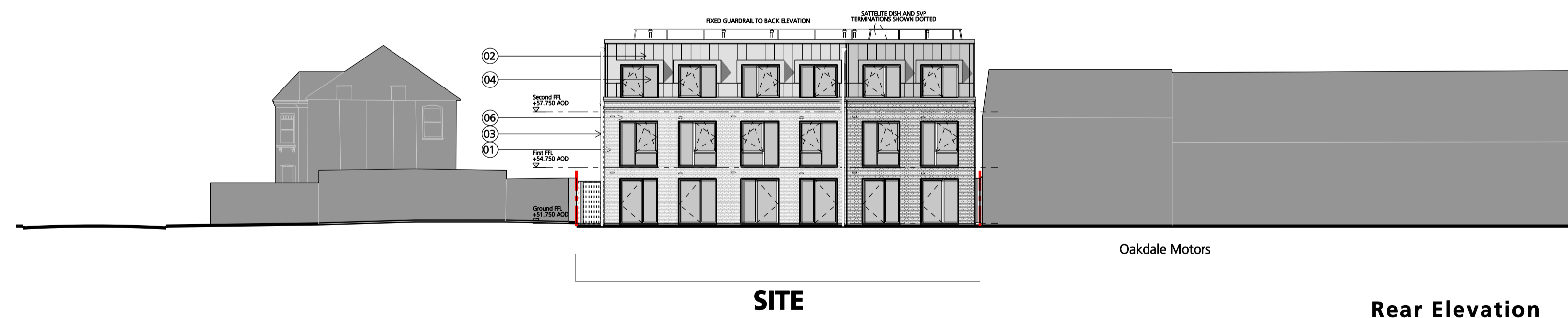
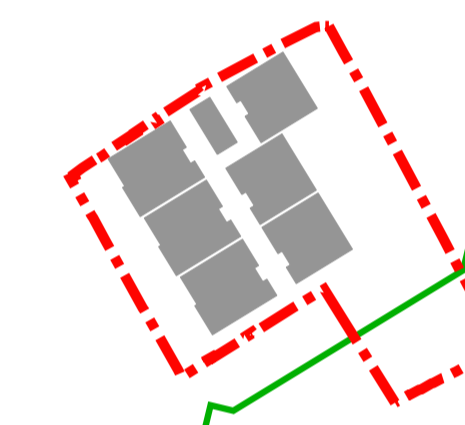
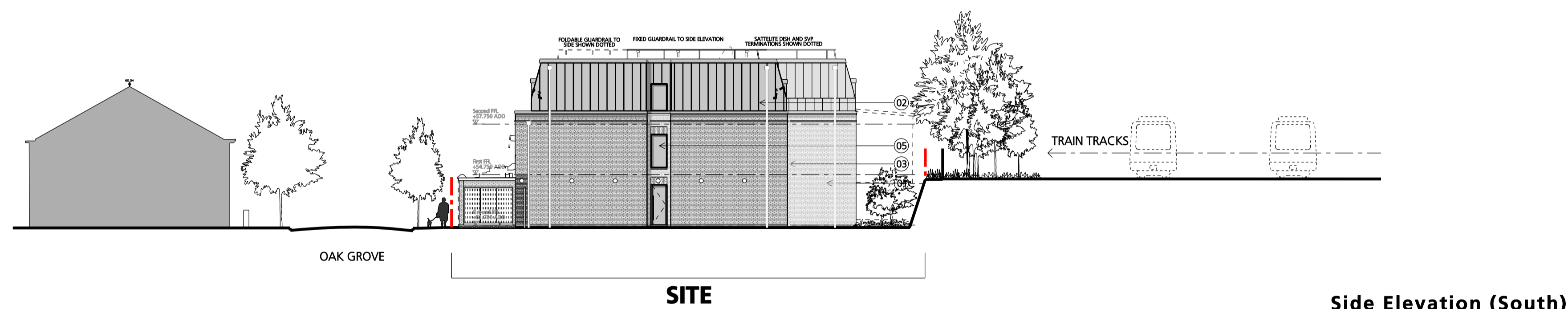
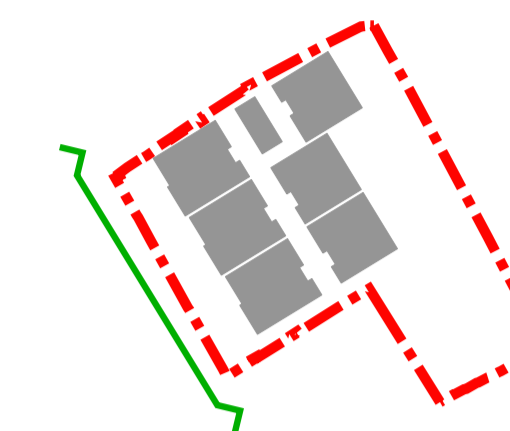


Notes: -
 Do not scale from drawings unless by agreement with HTA.
 Use figured dimensions only.
 Check all dimensions on site prior to commencing the works.
 Drawing to be read in conjunction with other relevant consultant information.
 This drawing is the copyright of HTA Architects Ltd. and must not be copied or reproduced in part, or in whole, without the express permission of HTA Architects Ltd.
 Drawing to be read in conjunction with outline specification.

Drawing Notes: -

Legend: -

- 01 London Stock brick
- 02 Metal cladding dark grey
- 03 Metal rainwater pipe dark grey
- 04 Aluminium window with dark grey frame
- 05 Aluminium window with dark grey frame and obscured glazing
- 06 Air bricks
- 07 Timber doors



key plan

B	16.03.15	VME	Rain water pipes, lights, satellite dish, and guardrail added; service risers omitted. Issued for planning amendments.
A	04.02.14	PSW	Design developments to blk entrance/elevations generally ISSUED FOR PLANNING
-	28.01.14	PSW	Initial Issue
revision	date	drawn	description

FOR PLANNING

HUTTON CONSTRUCTION
 Oak Grove, Camden, NW2 3LR
 client / job name

Block Elevations

drawing title

OGC-AL02-040

B

job reference scale drawn

POC-OGC 1:200 @ A1, 1:400 @ A3 MFN

0m 4m 8m 12m 16m 20m

106-110 Kentish Town Road London UK NW1 9PX

P (020) 7485 8555 F (020) 7485 1232 info@hta.co.uk

