

All dimensions to be verified on site. Figured dimensions to take precedent to those scaled. Any areas indicated on this drawing are for guidance only, no responsibility is taken for their accuracy.

The drawing is the property of Applied Landscape Design Limited. Copyright is reserved by them and the drawing is issued on the condition that it is not copied, reproduced, retained or disclosed to any unauthorised person, either wholly or in part without the written consent in writing of Applied Landscapes.

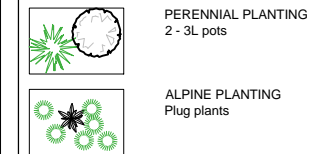
© 2015 Applied Landscape Design Limited. All rights reserved.

CDM/H&S

The works illustrated on this drawing have been reviewed against the Design CDM Risk Register and significant risks are noted as:

- Working in close proximity to building facades
- Softworks installation

NOTES / KEY:



REFER TO DRAWINGS / DOCUMENTS:

- ALD639_PL401 First Floor Living Roof: Planting Plan Layout
- ALD639_PL402 Ground Floor - Back Garden: Planting Plan Layout
- ALD639_PL404 Lower Ground Courtyard: Planting Plan Layout
- ALD639_PL405 Basement Courtyard: Planting Plan Layout
- ALD639_RP901 Landscape Proposals Report

REVISIONS

no.	revision	date
01	First Issue for Information	27.01.2015

CLIENT:

VABEL

VABEL LTD
112 BOUNDARY ROAD, LONDON, NW8 6RH
T+44 (0)20 7625 1115 F+44 (0)20 7625 1117
CONTACT@VABEL.CO.UK
WWW.VABEL.CO.UK

LANDSCAPE ARCHITECT:

The Threshing Barn
Bignell Park Barns
Chesteron, Nr. Bicester
Oxfordshire, OX26 1TD
Tel: 01869 249776
Email: mail@appliedlandscape.co.uk



PROJECT:

16a LYNDHURST GARDENS

DRAWING TITLE:

**GROUND FLOOR - FRONT GARDEN
PLANTING PLAN LAYOUT**

drawn: CW	scale: 1:100 @ A3
checked: KmJ	status: Information
date: 22.01.2015	xref file ref: ALD639_PLbase
PROJECT NO. ALD639	DRAWING NUMBER: PL403
	REVISION: 01

ORIGINAL A3 SIZE SHEET

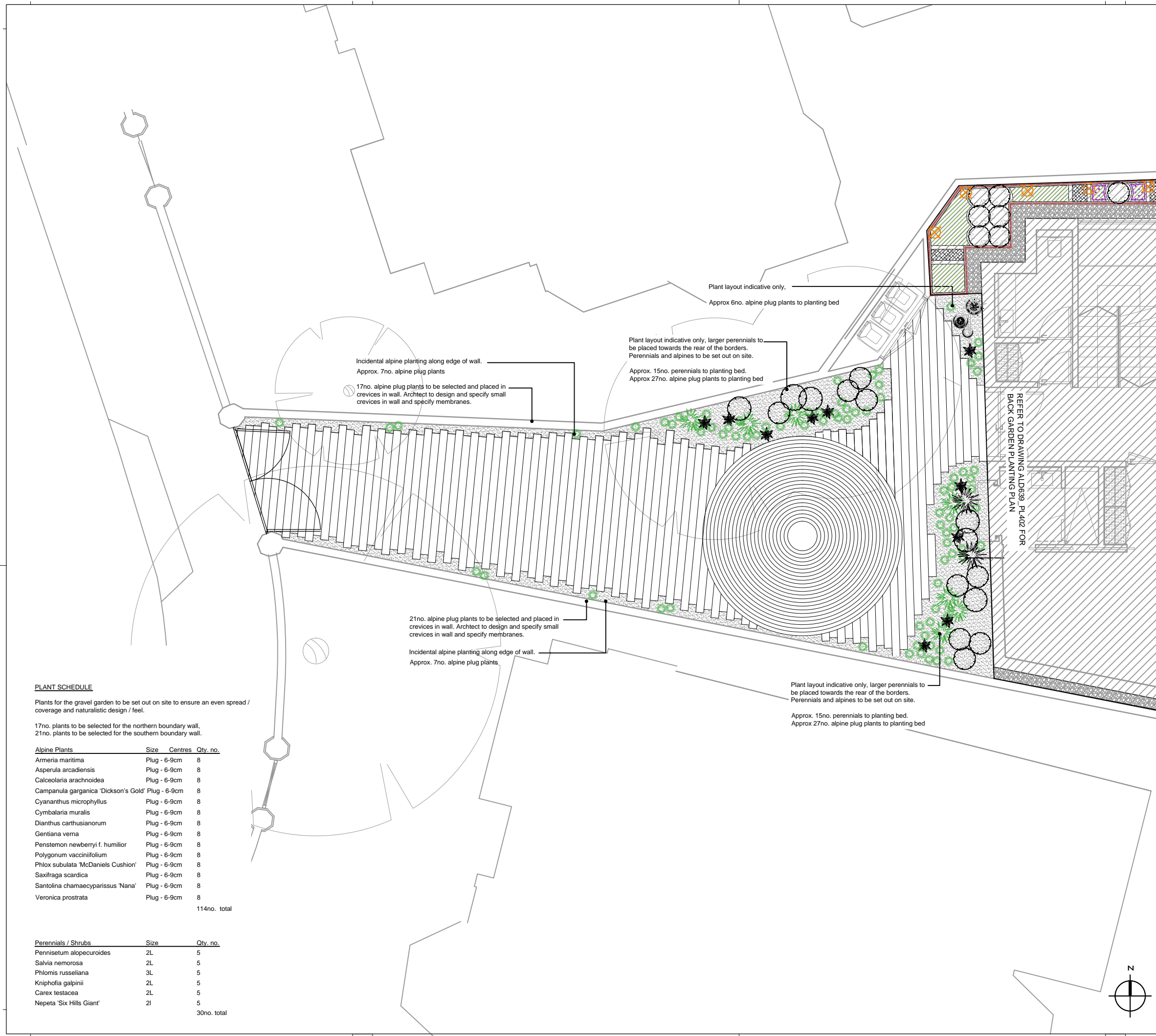
PLANT SCHEDULE

Plants for the gravel garden to be set out on site to ensure an even spread / coverage and naturalistic design / feel.

17no. plants to be selected for the northern boundary wall.
21no. plants to be selected for the southern boundary wall.

Alpine Plants	Size	Centres	Qty. no.
Armeria maritima	Plug - 6-9cm	8	
Asperula arcadiensis	Plug - 6-9cm	8	
Calceolaria arachnoidea	Plug - 6-9cm	8	
Campanula garganica 'Dickson's Gold'	Plug - 6-9cm	8	
Cyananthus microphyllus	Plug - 6-9cm	8	
Cymbalaria muralis	Plug - 6-9cm	8	
Dianthus carthusianorum	Plug - 6-9cm	8	
Gentiana verna	Plug - 6-9cm	8	
Penstemon newberryi f. humilior	Plug - 6-9cm	8	
Polygonum vacciniifolium	Plug - 6-9cm	8	
Phlox subulata 'McDaniels Cushion'	Plug - 6-9cm	8	
Saxifraga scardica	Plug - 6-9cm	8	
Santolina charmaecyparissus 'Nana'	Plug - 6-9cm	8	
Veronica prostrata	Plug - 6-9cm	8	
			114no. total

Perennials / Shrubs	Size	Qty. no.
Pennisetum alopecuroides	2L	5
Salvia nemorosa	2L	5
Phlomis russeliana	3L	5
Kniphofia galpinii	2L	5
Carex testacea	2L	5
Nepeta 'Six Hills Giant'	2l	5
		30no. total



Incidental alpine planting along edge of wall.
Approx. 7no. alpine plug plants

17no. alpine plug plants to be selected and placed in crevices in wall. Architect to design and specify small crevices in wall and specify membranes.

Plant layout indicative only.
Approx 6no. alpine plug plants to planting bed

Plant layout indicative only, larger perennials to be placed towards the rear of the borders. Perennials and alpines to be set out on site.
Approx. 15no. perennials to planting bed.
Approx 27no. alpine plug plants to planting bed

21no. alpine plug plants to be selected and placed in crevices in wall. Architect to design and specify small crevices in wall and specify membranes.
Incidental alpine planting along edge of wall.
Approx. 7no. alpine plug plants

Plant layout indicative only, larger perennials to be placed towards the rear of the borders. Perennials and alpines to be set out on site.
Approx. 15no. perennials to planting bed.
Approx 27no. alpine plug plants to planting bed

REFER TO DRAWING ALD639_PL402 FOR BACK GARDEN PLANTING PLAN

