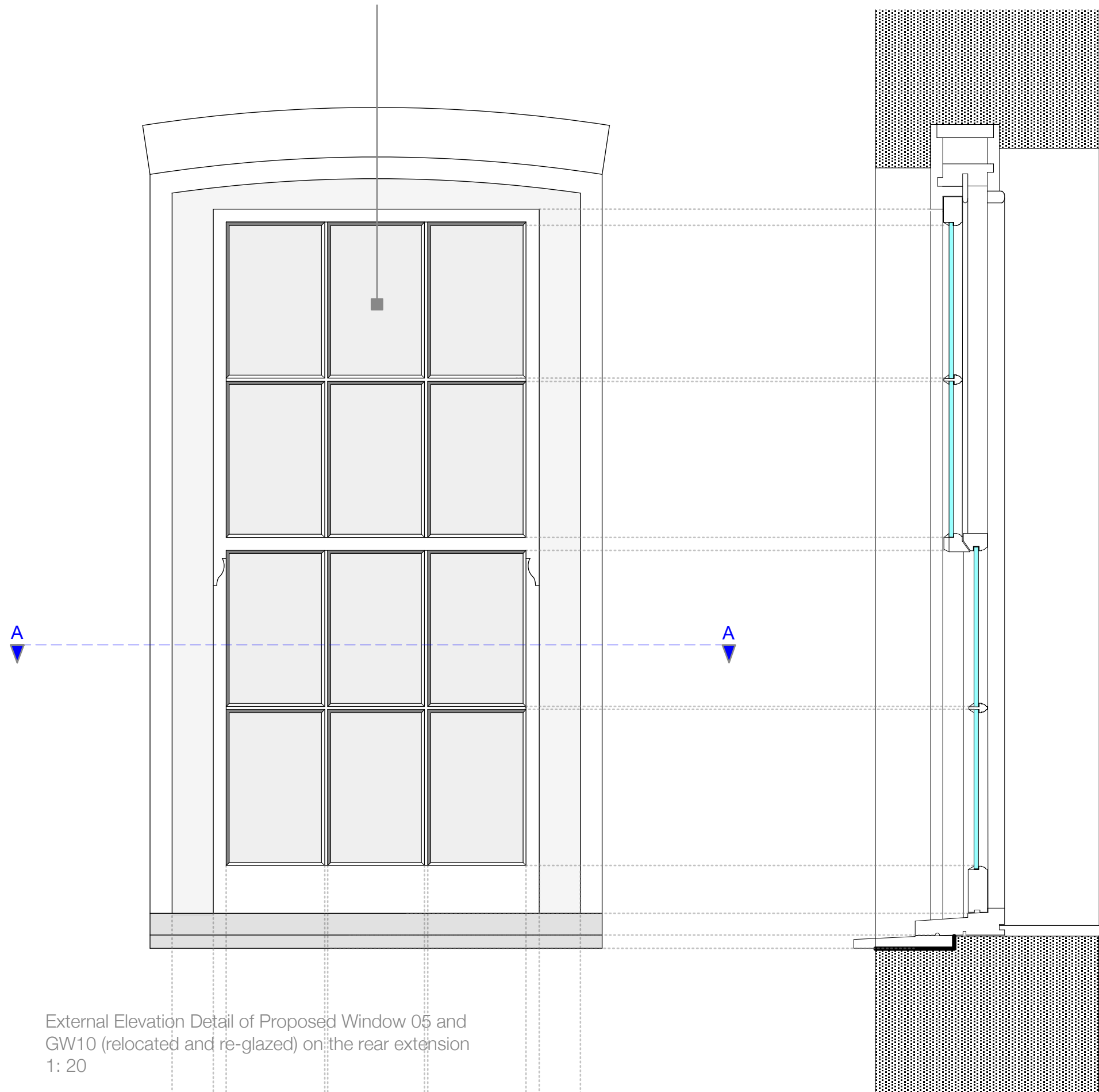


Thin double glazed glass panes

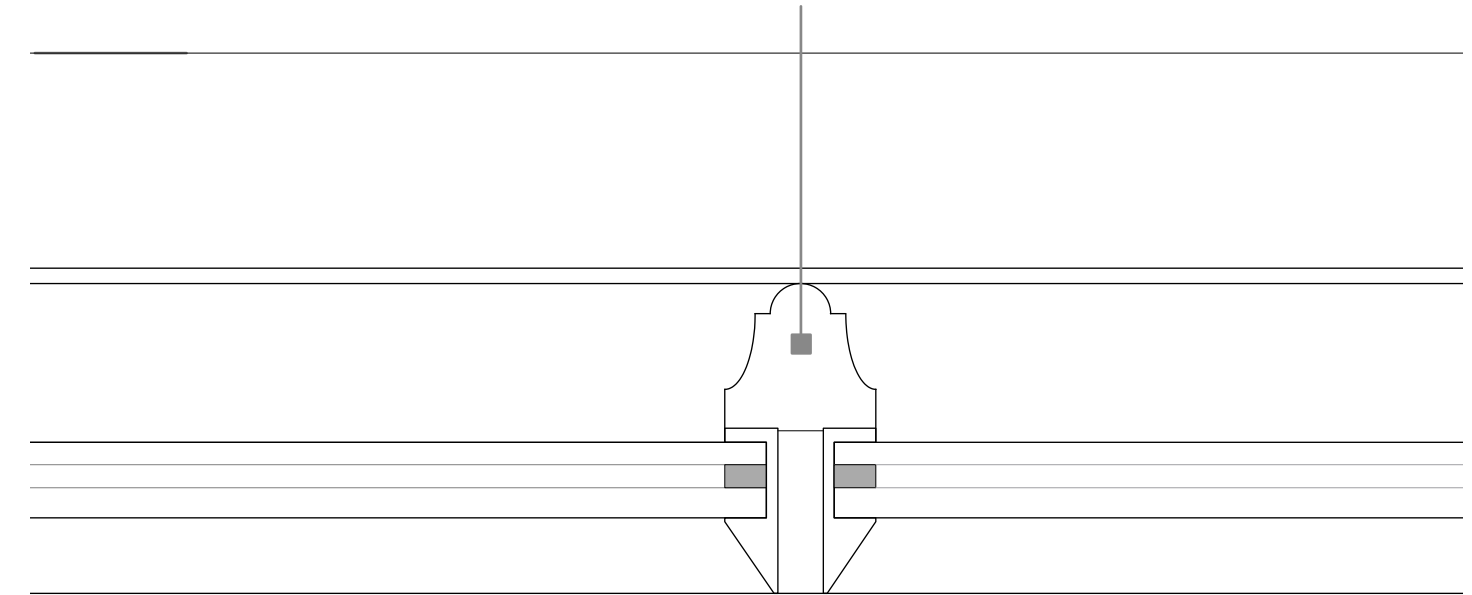


External Elevation Detail of Proposed Window 05 and GW10 (relocated and re-glazed) on the rear extension
1: 20

Detail Section B-B through Proposed Window 05 and GW10 (relocated and re-glazed)
1: 20

Plan Detail A-A of a Proposed Window 05 and GW10 (relocated and re-glazed)
1: 20

Internal Lambs Tongue Moulding



Detail of thin Histoglass thin double glazing & Lambs Tongue Moulding
1: 1



Charlton
Brown
Architects

Capo di Monte, Windmill Hill
New Windows - Details

1249/SK 13(1)

The Belvedere 2 Back Lane Hampstead London NW3 1HL
T 020 7794 1234 E office@charltonbrown.com

Scale 1: 10 @ A2
This drawing is copyright