

PPC aluminium or mild steel painted services duct

PPC aluminium floor level channel

Painted metallic PPC aluminium frame

Precast stone panels with fully grouted tile joints with expressed recess

Oxygen tank behind enclosure

Brick header for coping

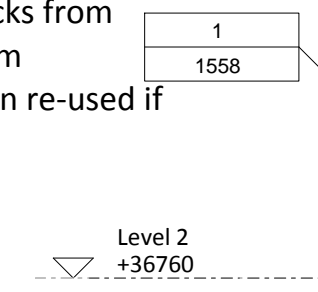
Red/brown imperial brick similar to Jeremy Bentham Pub & Paramount Court set in Flemish bond or other to achieve free area required by BOC by omission of headers.

Recessed 'perforated' brick panel by omission of headers. Size aligned with retained existing openings on stone base below

Retained existing stone base, cleaned and repaired. Surveyed and rebuilt if required by construction process using existing masonry

Existing window opening fitted with recessed stone panel to match & perforated for ventilation if required by BOC

Note: Bricks from Rosenheim demolition re-used if possible.



Level 5
+49000

Level 4
+44920

Level 3
+40840

Level 2
+36760

Level 1
+32680

Level 0
+27580

Typical ppc mild steel fabricated planters + integrated handrail

Painted PPC aluminium frame + louvers

Level 5
+49000

Level 4
+44920

Level 3
+40840

Level 2
+36760

Level 1
+32680

Level 0
+27580

GENERAL DESCRIPTION

A) Pre-cast concrete (reconstituted stone) elements (PPC)
Similar in hue (colour) and tone (lightness) to the Portland Stone used in buildings nearby, a light grey, with mica fines or similar added to create a surface sparkle. Formed in specially fabricated steel moulds and carefully acid etched to remove surface latence and expose the aggregate.

B) Aluminium (AL) elements
All are polyester powder coated (PPC) to a metallic colour (RAL 9006, white aluminium, or RAL 9007, grey aluminium) unless otherwise stated as Anodised (AD) in which case it will be to a metallic colour range similar to the RAL colours stated for PPC elements.

C) Mild Steel (MS) elements
All finished in PPC as aluminium (AL) elements.

D) Stainless Steel (SS) elements
All brushed stainless steel, exterior quality stainless steel (316/1.4401).

E) Workmanship and fixings for metal elements

- All sections specially fabricated or extruded
- All welds ground flush and smooth, where elements are defined as anodised then no welding is to be carried out.
- Corner elements for aluminium extrusions fabricated by casting and machine finishing, no mitred corners are provided.
- All fixings recessed flush with counter sunk hex heads, colour to match element in which the fixing sits.

Recessed perforated brick panel

Level 1
+32680

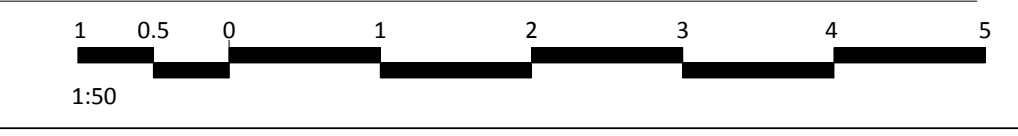
Level 0
+27580

1-VIE Elevation University Street

1 : 50

2-VIE Section West

1 : 50

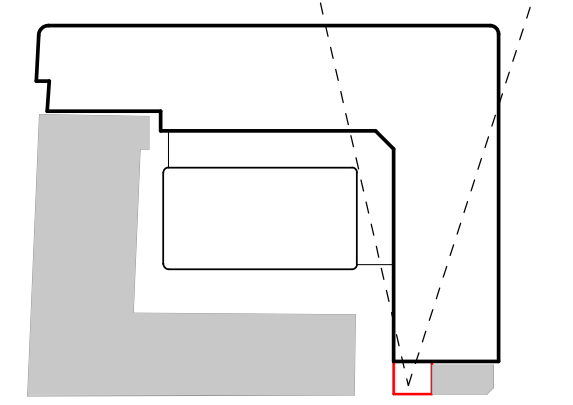
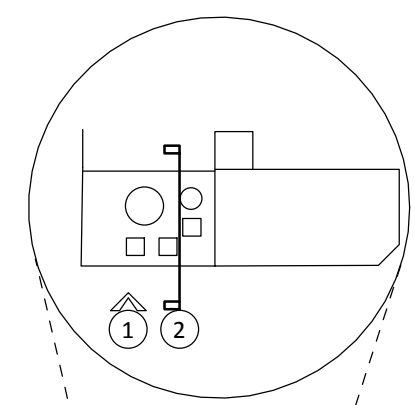


GENERAL NOTES

- G1 Any discrepancies between drawings to be report to the Architect immediately.
- G2 All Levels are above Ordnance Datum (AOD)
 - G2.1 New Levels are shown thus: +12.345
 - G2.2 Existing Levels are shown thus: +12.345
 - G2.3 Retained Existing Levels are shown thus: EX +12.345
- G3 Use figured dimensions only. Scale using scale bar below.
- G4 Refer to Engineers drawings for all structural and services information.
- G5 Clear height (finished floor to finished soffit) is shown thus: 2750
- G6 Setting Out points shown thus: SOP
- G7 Finishes are shown thus: [Finish Symbol]
- G8 Room numbers are shown thus: CX-100-001
- G9 Door (D) & Window (W) references are shown thus: [Door/Window Symbol]
- G10 For tolerances see the Design Drawings and Specifications
- G11 Refer to XXX for T-Sheet references, and to XXX for Architectural Specifications. T-sheet References are shown thus: IWS-01

NOTES

Also refer to A/UCLH4/1558 (Latest revision)
VIE Vessel + Vapouriser sizes are based on BOC email dated 12 September 2012 + DWG ref. PN0059



For Information

| Date | Rev | Status |
|----------|-----|--------------------------------|
| 22.10.13 | A | Issue 251_For Planning |
| 04.12.13 | B | Issue 266_For Comment |
| 04.12.13 | C | Issue 269_For BOC Confirmation |
| 04.12.13 | D | Issue 273_For LBC comment |
| 06.12.13 | D | Issue 270_For Planning |
| 13.12.13 | E | Issue 270_Issued for Planning |
| 13.12.13 | F | Issue 270_Issued for Planning |
| 03.03.14 | G | Issue 380_ Revised Planning |

Scott Tallon Walker Architects

10 Cromwell Place, London SW7 2JN United Kingdom
Tel: +4 (0)20 7589 4949
Email: mail@stwarchitects.com
www: www.stwarchitects.com

EDWARD WILLIAMS ARCHITECTS

116 Princesdale Road, London, W11 4NH
email: mail@edwardwilliamsarchitects.com
www: edwardwilliamsarchitects.com

Client: **University College London Hospitals**

Project: **UCLH Phase 4 & PBT**

Drawing Subject: **VIE - University Street Elevation & West Section**

File Reference:
Scale: **1 : 50 at A1** Date: **07 January 2014**

Drawn By: _____ Checked By: _____

Drawing Status: **For Information**

Project Status:

| | Sort Code | Drawing No. | Rev |
|---------|--------------|-------------|----------|
| STW Ref | 12046-EWA-A2 | 1555 | G |
| EWA Ref | A/UCLH4 | 1555 | G |