

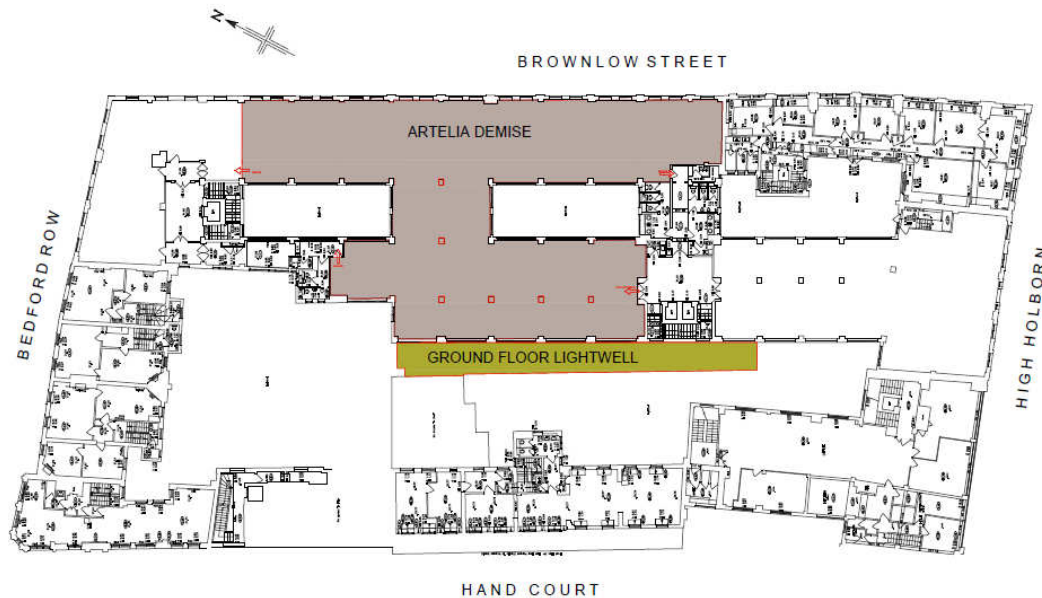
**Artelia
HIGH HOLBORN HOUSE
52-54 HIGH HOLBORN
LONDON
WC1V 6RL**

Statement in support of the planning application for the addition of two external condensing units within the ground floor light-well serving the 2nd floor comms rooms.

13 March 2015

1. Background

Artelia are undertaking a fit out of part of the 2nd floor at High Holborn house. The works include the construction of a comms room and this application relates to the addition of two external condensing units for the cooling required to this room.



2nd floor plan – Artelia demise & location of ground floor light-well

2. The Proposals

The proposed external condensing units are 2x Mitsubishi FDC100SV and the product details are included in this application. The exterior dimensions of the unit are 845 x 970 x 370 (in mm HxWxD)

The proposed siting of the units is within the ground floor light-well. They are to be wall mounted above each other with an overall height (with the required gap) of approximately 1990mm. The new units are to be adjacent to the landlord's external condensing unit which are 6x Mitsubishi Pury P-450 shown and indicated on the plan extract below. The landlord units are 1,710 x 1,750 x 760 (in mm HxWxD)



Proposed – 2x Mitsubishi FDC100SV

Landlords unit - Mitsubishi Pury P-450 (x6)

3. Design and impact

The condensers, though considerably smaller, are in keeping with the design of the landlords units in this location. The proposed units are approximately a quarter of the size of the landlords units of which there are six. The proposed units will therefore have negligible visual and noise impact.



The landlord’s layout of external condenser units.