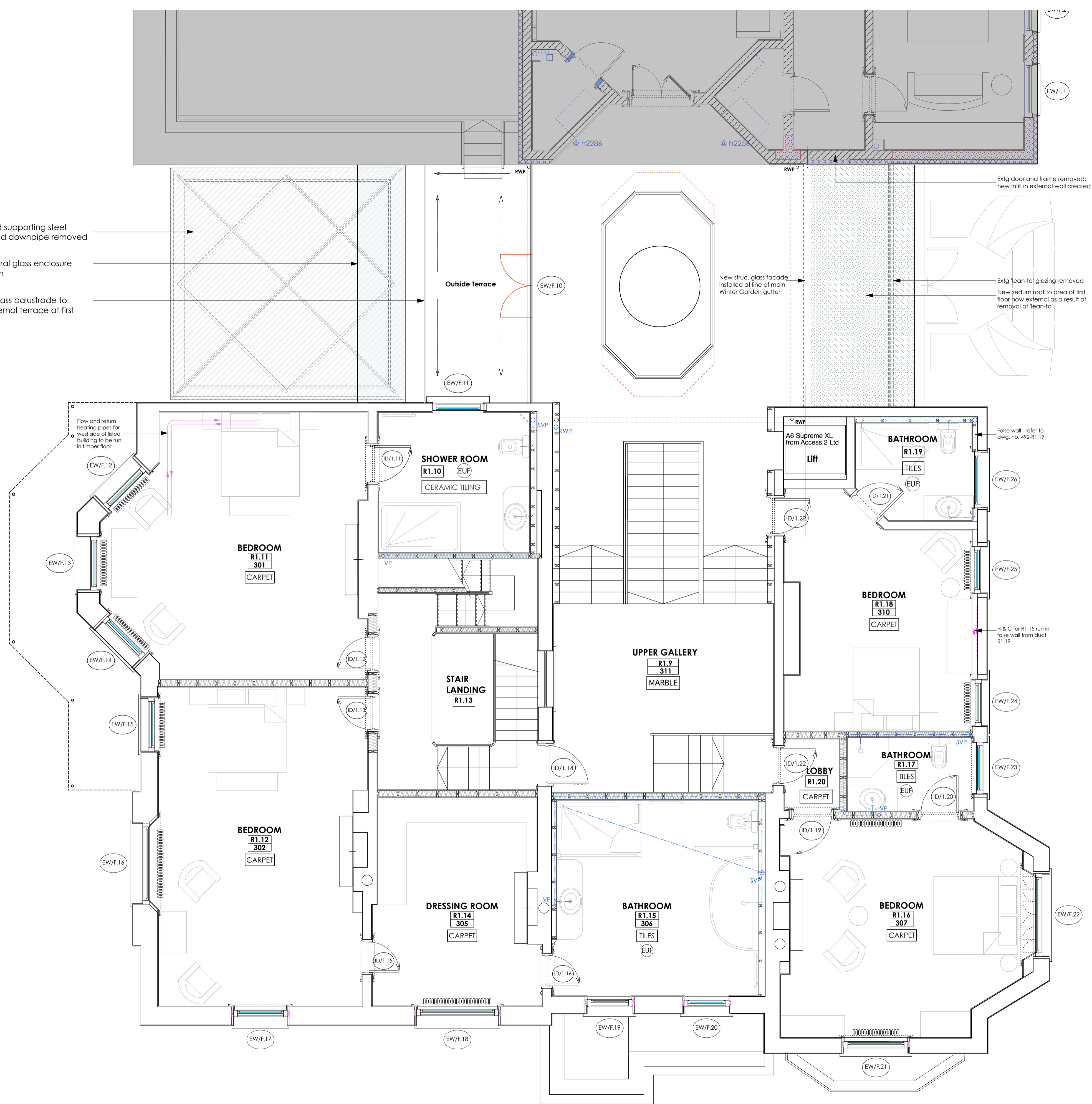


Cupola and supporting steel structure and downpipe removed

New structural glass enclosure onto garden

Structural glass balustrade to protect external terrace at first floor



New fanlised stud walls with insulation batts cut close within frame; clad in lathe and lime based plaster

Cast iron radiators, with thermostatic valves: 'Castrads' or similar approved. Size and output to be determined by plumber



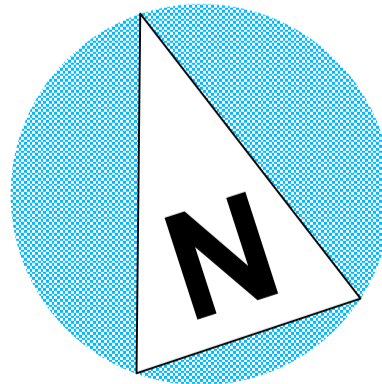
**NOTE:** For full details of all pipe runs, drainage runs, cable management and mechanical ventilation refer to mechanical and electrical sub-contractors drawings

Rev D: January 2015 - Existing 'lean-to' glazing on east side of Winter Gdn removed; new struc. glass facade installed at line of main Winter Gdn gutter

Rev C: December 2013 - Notes added

Rev B: August 2013 - Planning and Listed Bldg Consent Submission

Rev A: April 2013 - Notes added re removal of cupola; pre-application submission no. 2



**A1** 1:50 @ A1  
1:100 @ A3

**REVISED PLANNING & LISTED BLDG CONSENT SUBMISSION**

 Alan Power Architects Ltd 13 Newham Road London, W11 2BP Tel: 020 7229 9175 Fax: 020 7221 4172	<b>DRAWING</b> LISTED BUILDING - FIRST FLOOR PLAN	492/109 Rev. <b>D</b>
	<b>PROJECT</b> THE ELMS FITZROY PARK LONDON N6 6HS	Scale 1:50 @ A1 Date Jan 2012
<b>CLIENT</b> ELM INTERNATIONAL LTD	Drawn	