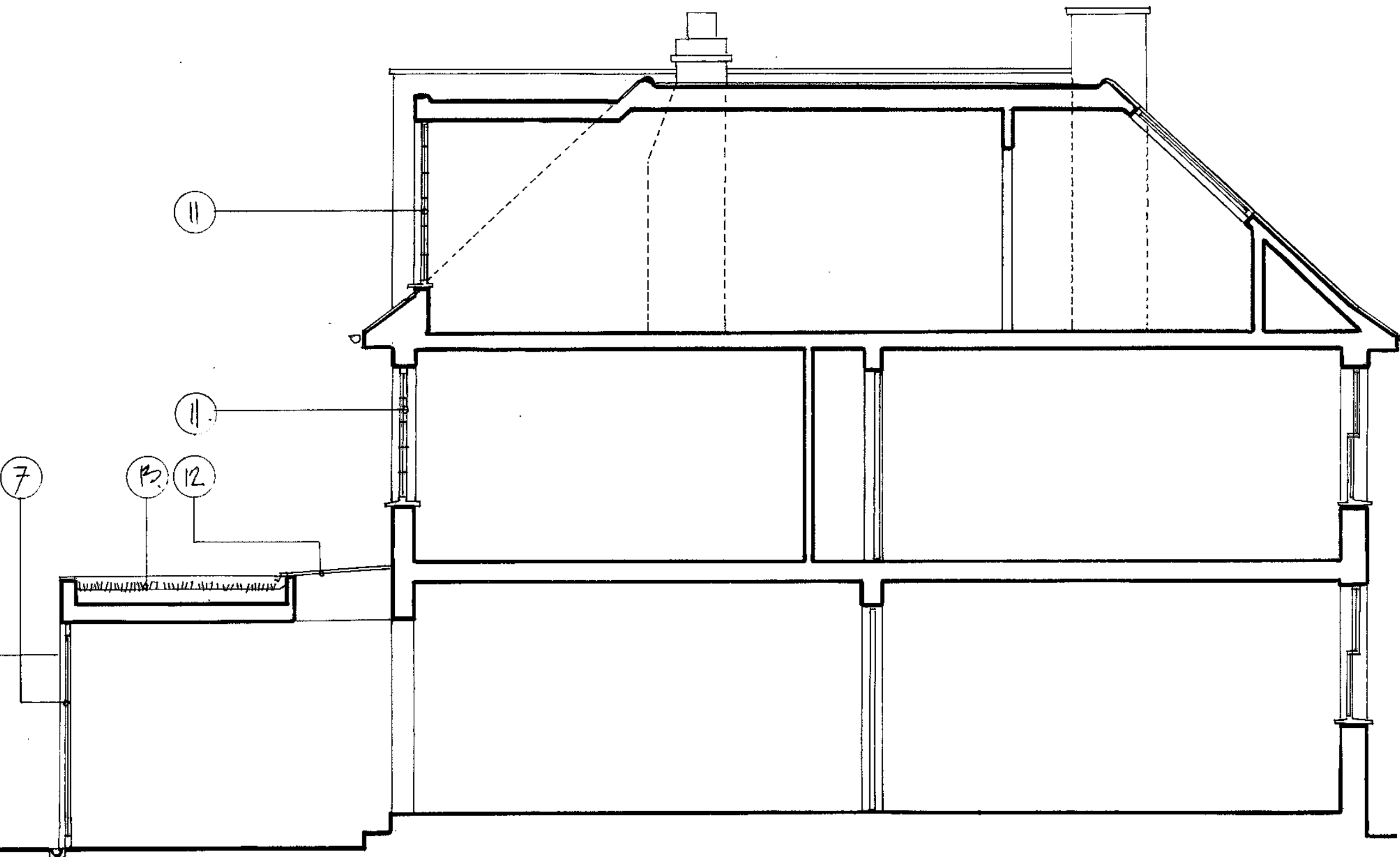


Notes:

All setting-out to be confirmed on site with architect

- 7. Proprietary sliding /glazed brushed aluminium screen by Schuco or similar.
- 11. New timber casement double-glazed windows to match original windows to rear of house and unify fenestration throughout the main body of the house. Painted white.
- 12. Structural glazed roof-light.
- 13. Green nature mat roof by Blackdown Horticultural consultants (or similar approved), to provide year round lichen covered green roof.



Martyn Clarke Architecture  
 78 Crouch Hill N8 9EE  
 office 0207 263 7121 mob 0771 0080117  
 e-mail info@martynclarkearchitecture.com  
 web www.martynclarkearchitecture.com

Project no. 6219 planning	Title: 8 Ardwick Road NW2 2BX Proposed Section A-A
------------------------------	---

Dwg no. 18	Scale: 1:50	Date: March '15
---------------	----------------	--------------------

