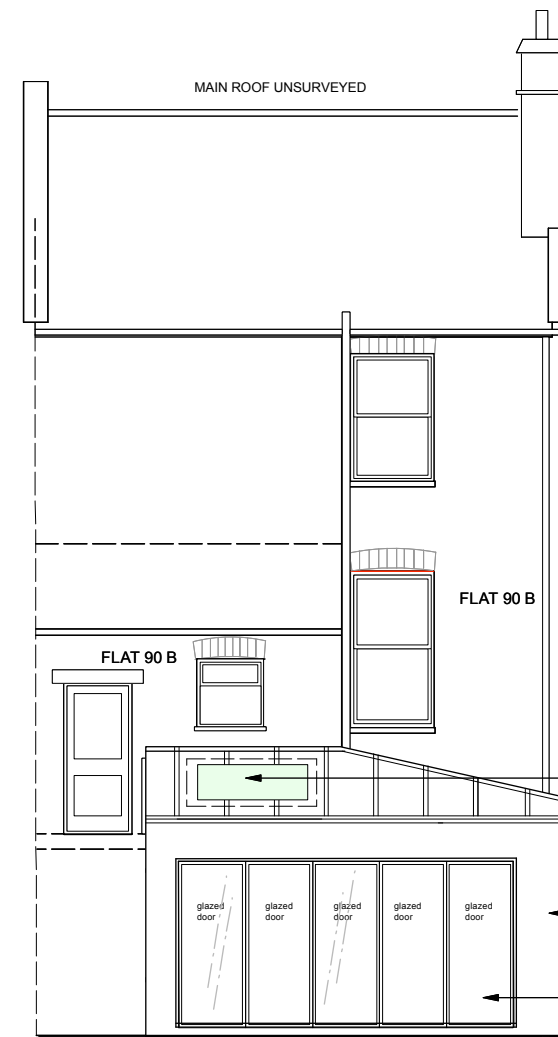


EXISTING REAR ELEVATION



PROPOSED REAR ELEVATION

Opening rooflight

Brickwork to match existing as in approved Planning approval 2007/0481/PR1

Alteration to approved Planning approval 2007/0481/PR1 from 2no glazed french doors and 2no fixed glazed panels to a series of folding sliding glazed doors

GENERAL NOTES

- 1.1 **REGULATIONS** - THE COMPLETE WORKS ARE TO CONFORM TO LOCAL COUNCIL REGULATIONS AND THE REQUIREMENTS LAID DOWN IN THE TENANTS' GUIDELINES MANUAL, IF APPLICABLE.
- 1.2 **HEALTH AND SAFETY** - THE COMPLETE WORKS ARE TO CONFORM TO LOCAL COUNCIL REGULATIONS AND BE CARRIED OUT IN SUCH A WAY AS TO MINIMISE HEALTH AND SAFETY HAZARDS.
- 1.3 **FIRE PROTECTION** - THE CONTRACTOR TO COMPLY WITH THE RELEVANT LOCAL AUTHORITY CODE OF PRACTICE FOR THE PREVENTION OF FIRES ON CONSTRUCTION SITES.
ALL MATERIALS ARE TO CONFORM TO LOCAL COUNCIL REQUIREMENTS.
ALL EXISTING FIRE PROTECTION TO BE MAINTAINED.

- ALL SERVICES THAT PASS THROUGH FIRE PROTECTED CONSTRUCTION SHOULD BE FIRE STOPPED.
- ALL PARTITIONS AND CEILINGS INSTALLED SHOULD PROVIDE THE REQUIRED FIRE SEPARATION BETWEEN COMPARTMENTS.
- 1.4 **STRUCTURE** - TO ENGINEER'S DETAILS AND LOCAL AUTHORITY REQUIREMENTS. THE CONTRACTOR TO ADVISE ON ALL DETAILS AND ENSURE STABILITY AND STRENGTH OF CONSTRUCTION.
- 1.5 **SERVICES** - TO ENGINEER'S DETAILS AND LOCAL AUTHORITY REQUIREMENTS.
- 1.6 **TEMPORARY SERVICES** - THE CONTRACTOR WILL BE RESPONSIBLE FOR THE PROVISION OF AND PAYMENT FOR ALL TEMPORARY SERVICES INCLUDING WATER, LIGHTING, ELECTRICITY AND TELEPHONES.

- 1.7 **CONTRACTOR DRAWINGS** - CONTRACTOR TO PROVIDE SETTING OUT AND ROD DRAWINGS FOR APPROVAL PRIOR TO CONSTRUCTION.
- THE CONTRACTOR TO CHECK ALL DIMENSIONS ON SITE AND RELATE TO THESE DRAWINGS. THE CONTRACTOR TO REPORT ANY DISCREPANCIES TO DESIGNERS PRIOR TO CONSTRUCTION.

- THE CONTRACTOR TO ADVISE ON ALL DETAILS AND ENSURE STABILITY AND STRENGTH OF CONSTRUCTION. THE CONTRACTOR TO PROVIDE SETTING OUT AND ROD DRAWINGS FOR APPROVAL PRIOR TO CONSTRUCTION.
- THE CONTRACTOR TO CHECK ALL DIMENSIONS ON SITE AND RELATE TO THESE DRAWINGS. THE CONTRACTOR TO REPORT ANY DISCREPANCIES TO DESIGNERS PRIOR TO CONSTRUCTION.
- ALL SERVICES TO LOCAL AUTHORITIES, BCO AND ENVIRONMENTAL HEALTH REQUIREMENTS AND TO SERVICE ENGINEER'S DETAILS.
- ALL STRUCTURE TO STRUCTURAL ENGINEER'S DETAILS AND LOCAL AUTHORITY AND BCO REQUIREMENTS.
- ALL CONSTRUCTION AND MATERIALS TO COMPLY WITH CURRENT BUILDING AND FIRE REGULATIONS.

CONTRACTOR SHALL COMPLY WITH:

- THE CDM '94 + 2007 REGULATIONS
- FIRE PRECAUTIONS ACT 1997
- CODE OF PRACTICE FOR THE PREVENTION OF FIRES ON CONSTRUCTION SITES AND BUILDINGS UNDERGOING REFURBISHMENT (WORKPLACE) REGULATIONS 1997
- HEALTH & SAFETY AT WORK REGULATIONS 1974 CODE OF WELFARE CONDITIONS AS OUTLINED IN THE NATIONAL WORKING RULE AGREEMENT FOR THE BUILDING INDUSTRY AND ANY STATUTORY RULES AND ORDERS RELATING TO THE PROVISION AND MAINTENANCE OF WELFARE AND SAFETY MEASURES AND ARRANGES FOR ALL WORK PEOPLE EMPLOYED ON SITE.
- THE WORKPLACE (HEALTH, SAFETY AND WELFARE) REGULATIONS 1992
- THE CONSTRUCTION (HEALTH, SAFETY AND WELFARE) REGULATIONS 1996

DO NOT SCALE THIS DRAWING. ALL DIMENSIONS TO BE VERIFIED ON SITE. COPYRIGHT OF THIS DRAWING REMAINS WITH DESIGNER

REV	DATE	DETAIL
A	16.03.2015	NON-MATERIAL CHANGE TO ORIGINAL APPROVED PLANNING APPLICATION SET OUT OF DWGS AS PER PLANNER REQUEST
	09.02.2015	NON-MATERIAL CHANGE TO ORIGINAL APPROVED PLANNING APPLICATION

BOONHOLT DESIGNCONSULTANTS

HILL HOUSE
28 LYNN ROAD
WIMBORSHAM
PE34 3QL
T 07714 235750
T 07515 667430
E us@boonholt.com

CLIENT	J PALMER
PROJECT	90A SAVERNAKE ROAD, NW3 2JR
DRAWING	EXISTING AND PROPOSED REAR ELEVATIONS
DRAWING NO	410-04 REV A
DATE	July 2014
SCALE	1:100 AT A3