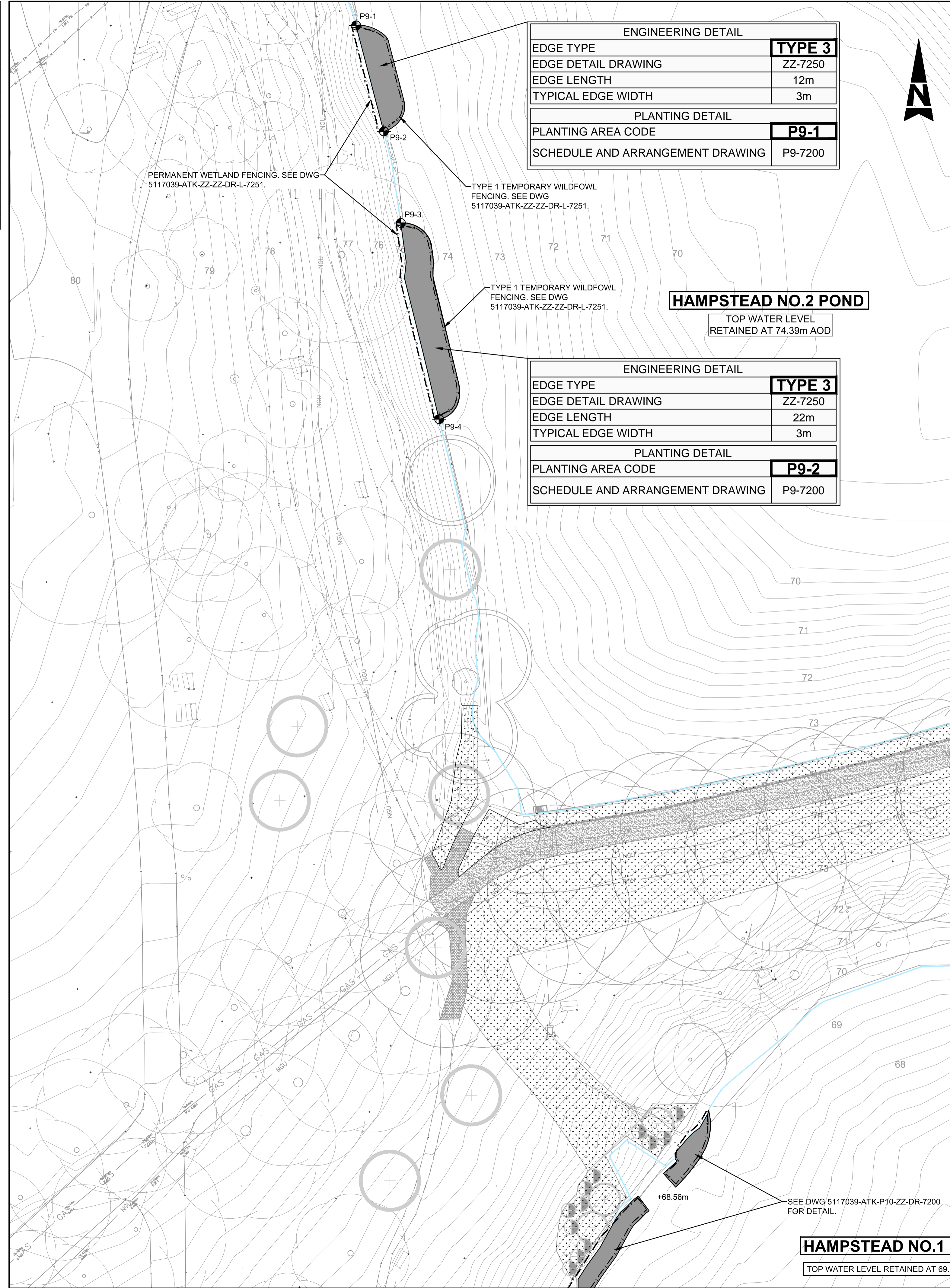


100
0
10
Millimetres



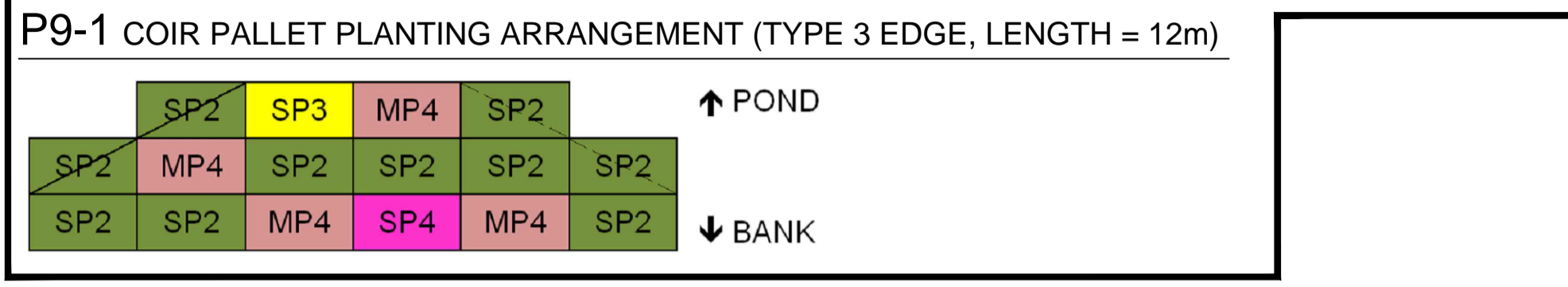
ENGINEERING DETAIL	
EDGE TYPE	TYPE 3
EDGE DETAIL DRAWING	ZZ-7250
EDGE LENGTH	12m
TYPICAL EDGE WIDTH	3m
PLANTING DETAIL	
PLANTING AREA CODE	P9-1
SCHEDULE AND ARRANGEMENT DRAWING	P9-7200

ENGINEERING DETAIL	
EDGE TYPE	TYPE 3
EDGE DETAIL DRAWING	ZZ-7250
EDGE LENGTH	22m
TYPICAL EDGE WIDTH	3m
PLANTING DETAIL	
PLANTING AREA CODE	P9-2
SCHEDULE AND ARRANGEMENT DRAWING	P9-7200

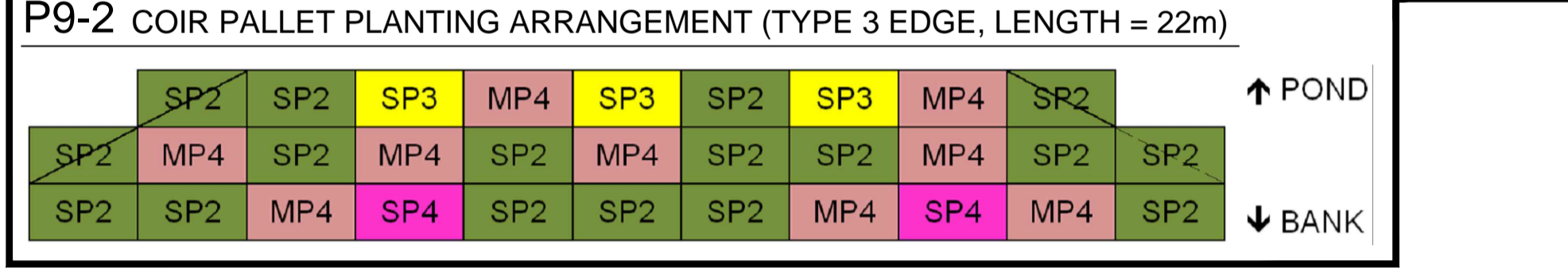
HAMPSTEAD NO.2 POND
TOP WATER LEVEL
RETAINED AT 74.39m AOD

HAMPSTEAD NO.1 POND
TOP WATER LEVEL RETAINED AT 69.39m AOD

P9-1 PLANTING SCHEDULE (COIR PALLETS)				
Area Code	Installation Type	Description	Species	Number of 2x1m Pallets
P9-1	SP2	Single species pallet	Carex acutiformis	10
	SP3	Single species pallet	Iris pseudacorus	1
	SP4	Single species pallet	Lythrum salicaria	1
	MP4	Mixed species pallet	Carex acutiformis Iris pseudacorus	4



P9-2 PLANTING SCHEDULE (COIR PALLETS)				
Area Code	Installation Type	Description	Species	Number of 2x1m Pallets
P9-2	SP2	Single species pallet	Carex acutiformis	17
	SP3	Single species pallet	Iris pseudacorus	3
	SP4	Single species pallet	Lythrum salicaria	2
	MP4	Mixed species pallet	Carex acutiformis Iris pseudacorus	9



SOP	Eastings	Northings
P9-1	527225.0218	186082.2212
P9-2	527228.0600	186070.6125
P9-3	527229.9275	186060.5722
P9-4	527234.1237	186039.0806

KEY:

- POND EDGE
- EXISTING POND VEGETATION
- PROPOSED POND PLANTING
- PROPOSED SHEET PILE EDGE
- CONTOURS (m AOD)
- EXISTING FENCE / RAILING
- INDICATIVE LOCATION OF EXISTING TREES
- TEMPORARY WILDFOWL FENCING
- PERMANENT WETLAND FENCING
- POST AND CHESTNUT RAIL FENCE WITH MESH
- JAPANESE KNOTWEED
- GIANT HOGWEED
- HIMALAYAN BALSAM

DETAIL NUMBER OR ELEVATION, SECTION LETTER.
SHORTENED DRAWING NUMBER REFERENCE (5117039-ATK-P9-ZZ-DR-L-7201).

- NOTES:**
- ALL MEASUREMENTS IN MILLIMETRES UNLESS OTHERWISE STATED AND LEVELS IN METRES TO ABOVE ORDNANCE DATUM (AOD).
 - APPROXIMATE LOCATIONS OF JAPANESE KNOTWEED, HIMALAYAN BALSAM AND GIANT HOGWEED AS IDENTIFIED IN 2013 ARE SHOWN. FURTHER AREAS MAY BE ENCOUNTERED ON SITE.
 - TREES ON EDGE OF WORKS TO BE RETAINED AND PROTECTED IN ACCORDANCE WITH BRITISH STANDARDS (BS) 5837 WHERE SITE WORKS ALLOW.
 - THIS DRAWING IS TO BE READ IN CONJUNCTION WITH THE ARBOCULTURAL DRAWINGS, 5117039-ATK-2000 SERIES & ARBOCULTURAL METHOD STATEMENT 5117039-ATK-XX-ZZ-SP-L-005.
 - THIS DRAWING TO BE READ IN CONJUNCTION WITH LANDSCAPE DRAWINGS 5117039-ATK 7100, 7300 & 7500 SERIES.
 - THIS DRAWING TO BE READ IN CONJUNCTION WITH M&E DRAWINGS 5117039-ATK 7000 SERIES.
 - THIS DRAWING TO BE READ IN CONJUNCTION WITH ENGINEERING DRAWINGS 5117039-ATK 0000 AND 1000 SERIES.
 - THIS DRAWING TO BE READ IN CONJUNCTION WITH BUILDING SERVICES DRAWINGS 5117039-ATK 8000 SERIES.
 - REFER TO STANDARD POND AND POND SPECIFIC DETAIL DRAWINGS 5117039-ATK 7250 SERIES.
 - POND EDGE LEVELS VARY, AS DO DEPTHS OF SEDIMENT AND DEPTHS TO SOFT AND HARD BED.
 - TYPICAL TOP WATER LEVELS ARE SHOWN ON THE DRAWINGS.
 - SEE SPECIFICATION APPENDIX ON POND RESTORATION AND PLANTING FOR FURTHER INFORMATION ON MATERIALS, DESIGN, PLANT AND PLANTING REQUIREMENT.
 - ALL PLANTING ARRANGEMENTS REFER TO 2m x 1m AREAS AS INDIVIDUAL BLOCKS. THE TOP ROW REPRESENTS THE POND WARD PLANTING, WHILST THE BOTTOM ROW REPRESENTS THE BANK EDGE PLANTING. ALL ARRANGEMENT ARE ORIENTED LOOKING FROM THE BANK INTO THE POND.
 - FENCING TO BE INSTALLED TO ENCLOSE ALL NEWLY PLANTED MARGINAL AREAS SEE DWG 5117039-ATK-ZZ-DR-L-7251. TYPE 2 FENCE VARIANT TO BE USED ON ALL TEMPORARY SPILLWAY FENCING.
 - WETLAND PLANTING SHOULD NOT BE INSTALLED DURING PERIODS WHERE LEVELS ARE RISING RAPIDLY ABOVE TOP WATER LEVEL.

SAFETY, HEALTH AND ENVIRONMENTAL INFORMATION

In addition to the hazards/risks normally associated with the types of work detailed on this drawing, note the following:

- CONSTRUCTION**
- POND WATER LEVEL MAY RISE RAPIDLY DURING AND AFTER RAINFALL.
 - DEEP WATER >1M CONDITIONS, COMBINED WITH SOFT POND BED SEDIMENTS, ARE LIKELY TO BE ENCOUNTERED IN PROXIMITY TO WORKING AREA REQUIRED TO CREATE THE WETLAND PLANTING FEATURES.
 - NO MANUAL HANDLING OF ROCK ROLLS (ITEMS >25KG) FOR TYPE 2 EDGES.
 - TYPE 1 AND TYPE 2 PLANTING AREAS REQUIRING SILT FILL WILL BE SOFT UNDER FOOT.
 - NON-NATIVE INVASIVE CRAYFISH ARE KNOWN TO BE PRESENT. APPROPRIATE CHECK AND CONTROL PROCEDURES TO PREVENT THEIR SPREAD ARE REQUIRED.

- MAINTENANCE/CLEANING**
- TYPE 1 AND TYPE 2 PLANTING AREAS MAY BE SOFT UNDER FOOT.
 - CARE SHOULD BE TAKEN NOT TO DAMAGE WETLAND PLANTING WHILST UNDERTAKING ROUTINE MAINTENANCE E.G. WEEDING OF DELETERIOUS SPECIES AND LITTER REMOVAL.

- DECOMMISSIONING/DEMOLITION**
- TYPE 1 AND TYPE 2 PLANTING AREAS MAY BE SOFT UNDER FOOT.
 - CARE SHOULD BE TAKEN NOT TO DAMAGE ANY PLANTS WHEN REMOVING TEMPORARY FENCING.
 - OPTIONS FOR THE REUSE OF TEMPORARY FENCING MATERIALS ELSEWHERE ON SITE SHOULD BE EXPLORED.

It is assumed that all works will be carried out by a competent contractor working, where appropriate, to an approved method statement

Rev.	Date	Description	By	Chkd	App'd
C1	13/02/2014	FOR CONSTRUCTION	JK	IPM	MJV
P2	21/10/2014	FOR COSTING, ISSUED SUBJECT TO FINAL REVIEW BY PANEL ENGINEER	JA	IMMV	MW
P1	01/10/2014	FOR COSTING	IF	IMMV	MW

Drawing Status: **FOR CONSTRUCTION** Suitability: **A**

ATKINS

Woodcote Grove
Ashley Road
Epsom
Surrey
KT18 5BW

Tel: +44 (0)1372 726140
Fax: +44 (0)1372 740055
Copyright © Atkins Limited (2013) www.atkinsglobal.com

Client: **City of London Corporation**

Project Title: **HAMPSTEAD HEATH PONDS PROJECT**

Drawing Title: **HAMPSTEAD NO.2 POND RESTORATION GENERAL ARRANGEMENT SHEET 1 OF 1**

Scale	Designed	Drawn	Checked	Authorised
1:250	IM	IF	IM	MW

Original Size	Date	Date	Date	Date
A1	03/09/14	03/09/14	03/09/14	03/09/14

Drawing Number: **5117039-ATK-P9-ZZ-DR-L-7200** Revision: **C1**

