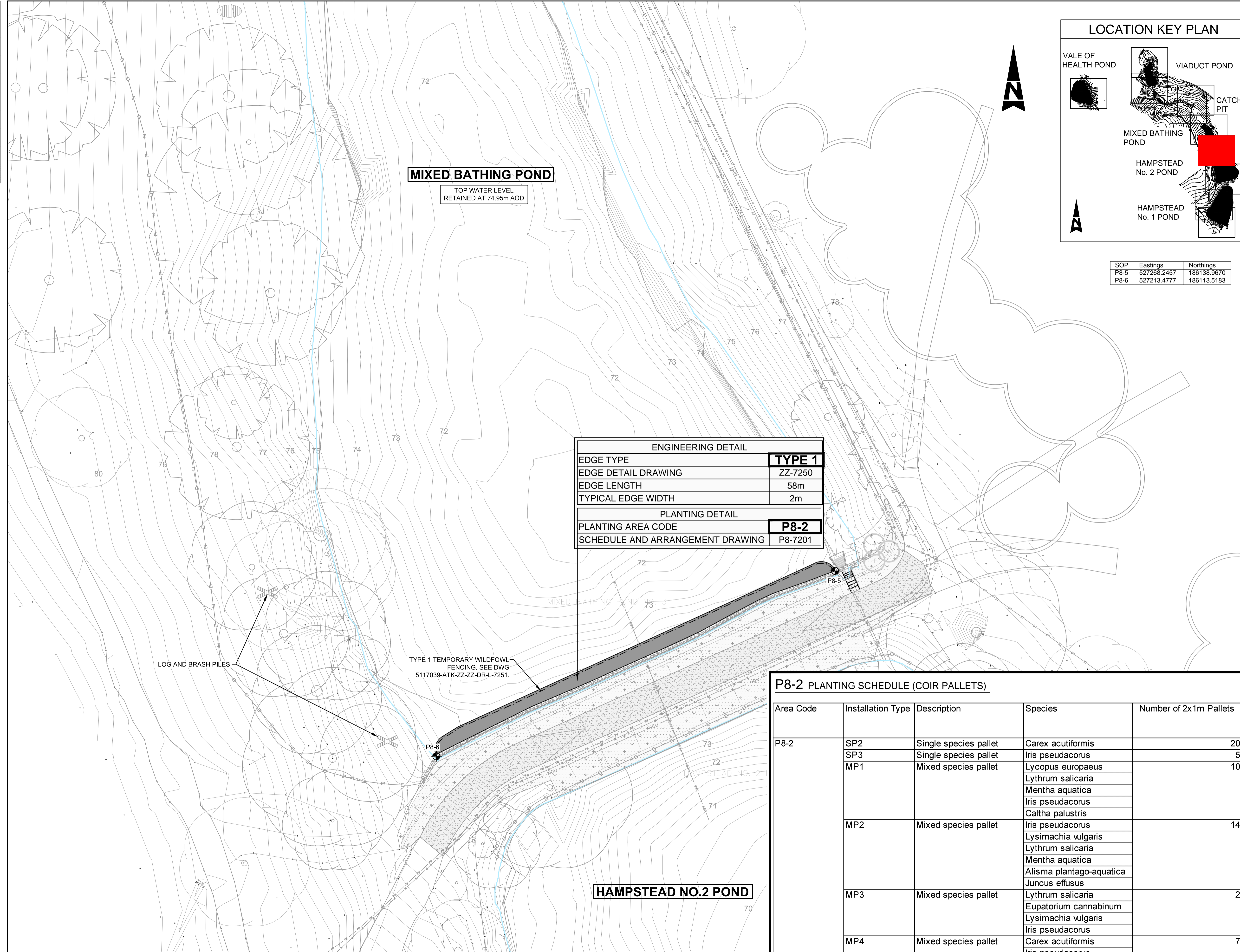
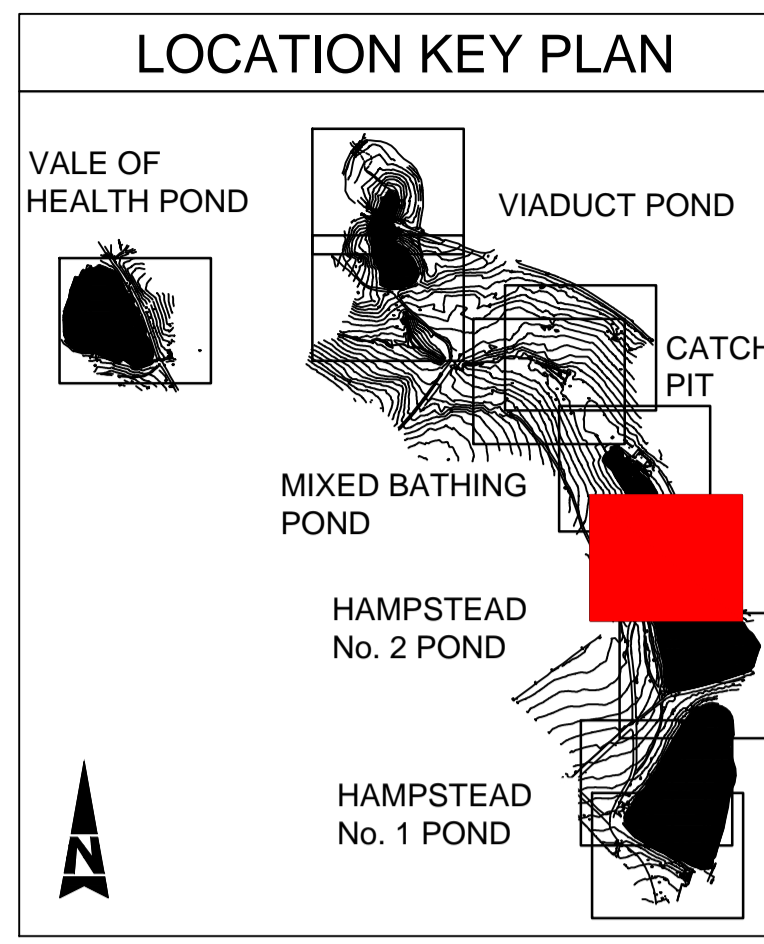


100
0 10
Millimetres



MIXED BATHING POND
TOP WATER LEVEL
RETAINED AT 74.95m AOD



KEY:

	POND EDGE		CONTOURS (m AOD)		PERMANENT WETLAND FENCING
	EXISTING POND PLANTING		EXISTING FENCE / RAILING		POST AND CHESTNUT RAIL FENCE WITH MESH
	PROPOSED POND PLANTING		INDICATIVE LOCATION OF EXISTING TREES		JAPANESE KNOTWEED
	PROPOSED SHEET PILE EDGE		TEMPORARY WILDFOWL FENCING		GIANT HOGWEED
	DETAIL NUMBER OR ELEVATION, SECTION LETTER		HIMALAYAN BALSAM		

NOTES:

- ALL MEASUREMENTS IN MILLIMETRES UNLESS OTHERWISE STATED AND LEVELS IN METRES TO ABOVE ORDNANCE DATUM (AOD).
- APPROXIMATE LOCATIONS OF JAPANESE KNOTWEED, HIMALAYAN BALSAM AND GIANT HOGWEED AS IDENTIFIED IN 2013 ARE SHOWN. FURTHER AREAS MAY BE ENCOUNTERED ON SITE.
- TREES ON EDGE OF WORKS TO BE RETAINED AND PROTECTED IN ACCORDANCE WITH BRITISH STANDARDS (BS) 5837 WHERE SITE WORKS ALLOW.
- THIS DRAWING IS TO BE READ IN CONJUNCTION WITH THE ARBORICULTURAL DRAWINGS, 5117039-ATK-2000 SERIES & ARBORICULTURAL METHOD STATEMENT 5117039-ATK-ZZ-SP-L-005.
- THIS DRAWING TO BE READ IN CONJUNCTION WITH LANDSCAPE DRAWINGS 5117039-ATK 7100, 7300 & 7500 SERIES.
- THIS DRAWING TO BE READ IN CONJUNCTION WITH M&E DRAWINGS 5117039-ATK 7600 SERIES.
- THIS DRAWING TO BE READ IN CONJUNCTION WITH ENGINEERING DRAWINGS 5117039-ATK 0000 AND 1000 SERIES.
- THIS DRAWING TO BE READ IN CONJUNCTION WITH BUILDING SERVICES DRAWINGS 5117039-ATK 8000 SERIES.
- REFER TO STANDARD POND AND POND SPECIFIC DETAIL DRAWINGS 5117039-ATK 7250 SERIES.
- POND EDGE LEVELS VARY, AS DO DEPTHS OF SEDIMENT AND DEPTHS TO SOFT AND HARD BED.
- TYPICAL TOP WATER LEVELS ARE SHOWN ON THE DRAWINGS.
- SEE SPECIFICATION APPENDIX ON POND RESTORATION AND PLANTING FOR FURTHER INFORMATION ON MATERIALS, DESIGN, PLANT AND PLANTING REQUIREMENT.
- ALL PLANTING ARRANGEMENTS REFER TO 2m x 1m AREAS AS INDIVIDUAL BLOCKS. THE TOP ROW REPRESENTS THE POND WARD PLANTING, WHILST THE BOTTOM ROW REPRESENT THE BANK EDGE PLANTING. ALL ARRANGEMENT ARE ORIENTED LOOKING FROM THE BANK INTO THE POND.
- FENCING TO BE INSTALLED TO ENCLOSE ALL NEWLY PLANTED MARGINAL AREAS SEE DWG 5117039-ATK-ZZ-DR-L-7251. TYPE 2 FENCE VARIANT TO BE USED ON ALL TEMPORARY SPILLWAY FENCING.
- WETLAND PLANTING SHOULD NOT BE INSTALLED DURING PERIODS WHERE LEVELS ARE RISING RAPIDLY ABOVE TOP WATER LEVEL.

SOP	Eastings	Northings
P8-5	527268.2457	186138.9670
P8-6	527213.4777	186113.5183

ENGINEERING DETAIL

EDGE TYPE	TYPE 1
EDGE DETAIL DRAWING	ZZ-7250
EDGE LENGTH	58m
TYPICAL EDGE WIDTH	2m

PLANTING DETAIL

PLANTING AREA CODE	P8-2
SCHEDULE AND ARRANGEMENT DRAWING	P8-7201

LOG AND BRASH PILES.

TYPE 1 TEMPORARY WILDFOWL FENCING. SEE DWG 5117039-ATK-ZZ-DR-L-7251.

HAMPSTEAD NO.2 POND

P8-2 PLANTING SCHEDULE (COIR PALLETS)

Area Code	Installation Type	Description	Species	Number of 2x1m Pallets
P8-2	SP2	Single species pallet	Carex acutiformis	20
	SP3	Single species pallet	Iris pseudacorus	5
	MP1	Mixed species pallet	Lycopus europaeus Lythrum salicaria Mentha aquatica Iris pseudacorus Caltha palustris	10
MP2	Mixed species pallet	Iris pseudacorus Lysimachia vulgaris Lythrum salicaria Mentha aquatica Alisma plantago-aquatica Juncus effusus	14	
MP3	Mixed species pallet	Lythrum salicaria Eupatorium cannabinum Lysimachia vulgaris Iris pseudacorus	2	
MP4	Mixed species pallet	Carex acutiformis Iris pseudacorus	7	

P8-2 COIR PALLET PLANTING ARRANGEMENT (TYPE 1 EDGE, BANK LENGTH = 58m)

SP2	MP4	SP3	SP2	MP1	MP2	MP2	MP1	MP2	SP2	SP2	SP2	MP2	MP1	MP1	MP2	SP2	SP2	SP3	MP2	MP2	MP1	MP1	MP1	MP4	MP4	SP2	SP2	↑ POND
SP2	MP4	MP4	SP2	MP1	MP2	MP2	MP1	MP3	SP3	SP2	SP2	MP2	SP3	MP1	MP3	SP2	SP2	SP2	MP2	MP2	MP2	MP2	MP4	MP4	SP3	SP2	SP2	↓ BANK

SAFETY, HEALTH AND ENVIRONMENTAL INFORMATION

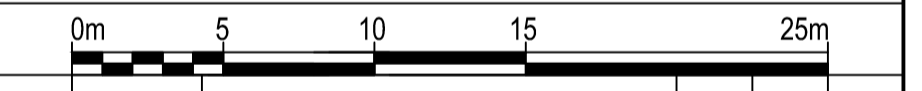
In addition to the hazards/risks normally associated with the types of work detailed on this drawing, note the following:

- CONSTRUCTION**
- POND WATER LEVEL MAY RISE RAPIDLY DURING AND AFTER RAINFALL.
 - DEEP WATER >1M CONDITIONS, COMBINED WITH SOFT POND BED SEDIMENTS, ARE LIKELY TO BE ENCOUNTERED IN PROXIMITY TO WORKING AREA REQUIRED TO CREATE THE WETLAND PLANTING FEATURES.
 - NO MANUAL HANDLING OF ROCK ROLLS (ITEMS >25KG) FOR TYPE 2 EDGES.
 - TYPE 1 AND TYPE 2 PLANTING AREAS REQUIRING SILT FILL WILL BE SOFT UNDER FOOT.
 - NON-NATIVE INVASIVE CRAYFISH ARE KNOWN TO BE PRESENT. APPROPRIATE CHECK AND CONTROL PROCEDURES TO PREVENT THEIR SPREAD ARE REQUIRED.

- MAINTENANCE/CLEANING**
- TYPE 1 AND TYPE 2 PLANTING AREAS MAY BE SOFT UNDER FOOT.
 - CARE SHOULD BE TAKEN NOT TO DAMAGE WETLAND PLANTING WHILST UNDERTAKING ROUTINE MAINTENANCE E.G. WEEDING OF DELETERIOUS SPECIES AND LITTER REMOVAL.

- DECOMMISSIONING/DEMOLITION**
- TYPE 1 AND TYPE 2 PLANTING AREAS MAY BE SOFT UNDER FOOT.
 - CARE SHOULD BE TAKEN NOT TO DAMAGE ANY PLANTS WHEN REMOVING TEMPORARY FENCING.
 - OPTIONS FOR THE REUSE OF TEMPORARY FENCING MATERIALS ELSEWHERE ON SITE SHOULD BE EXPLORED.

It is assumed that all works will be carried out by a competent contractor working, where appropriate, to an approved method statement



Rev.	Date	Description	By	Chkd	App'd
C1	13/02/2014	FOR CONSTRUCTION	JK	IPM	MJV
P2	21/10/2014	FOR COSTING, ISSUED SUBJECT TO FINAL REVIEW BY PANEL ENGINEER	JA	IM/MV	MW
P1	01/10/2014	FOR COSTING	IF	IM/MV	MW

Drawing Status: **FOR CONSTRUCTION** Suitability: **A**

ATKINS

Woodcote Grove
Ashley Road
Epsom
Surrey
KT18 5BW

Tel: +44 (0)1372 726140
Fax: +44 (0)1372 740055
www.atkinsglobal.com

Copyright © Atkins Limited (2013)

Client: **City of London Corporation**

Project Title: **HAMPSTEAD HEATH PONDS PROJECT**

Drawing Title: **MIXED BATHING POND RESTORATION GENERAL ARRANGEMENT SHEET 2 OF 2**

Scale	Designed	Drawn	Checked	Authorised
1:250	IM	IF	IM	MW

Original Size: A1 Date: 03/09/14 Date: 03/09/14 Date: 03/09/14

Drawing Number: 5117039-ATK-P8-ZZ-DR-L-7201 Revision: C1