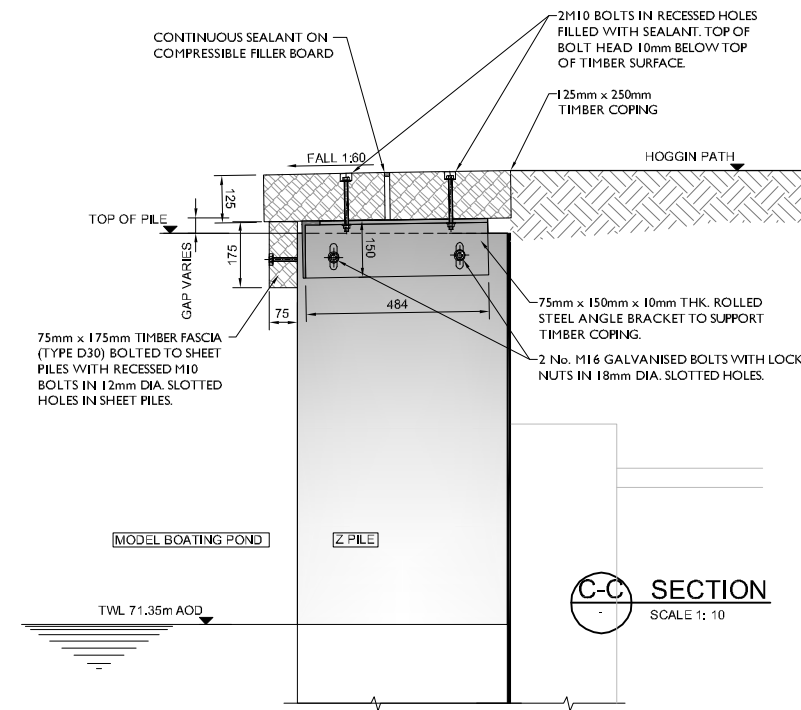
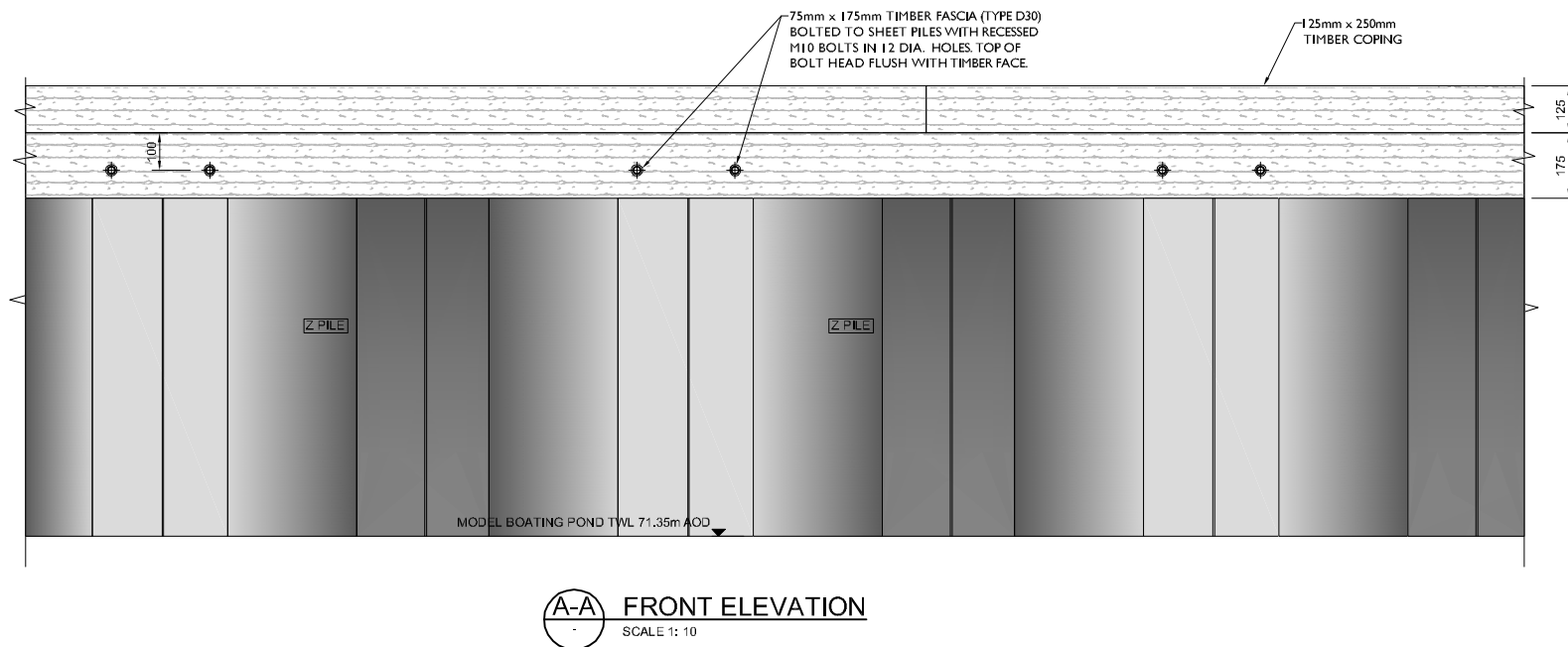
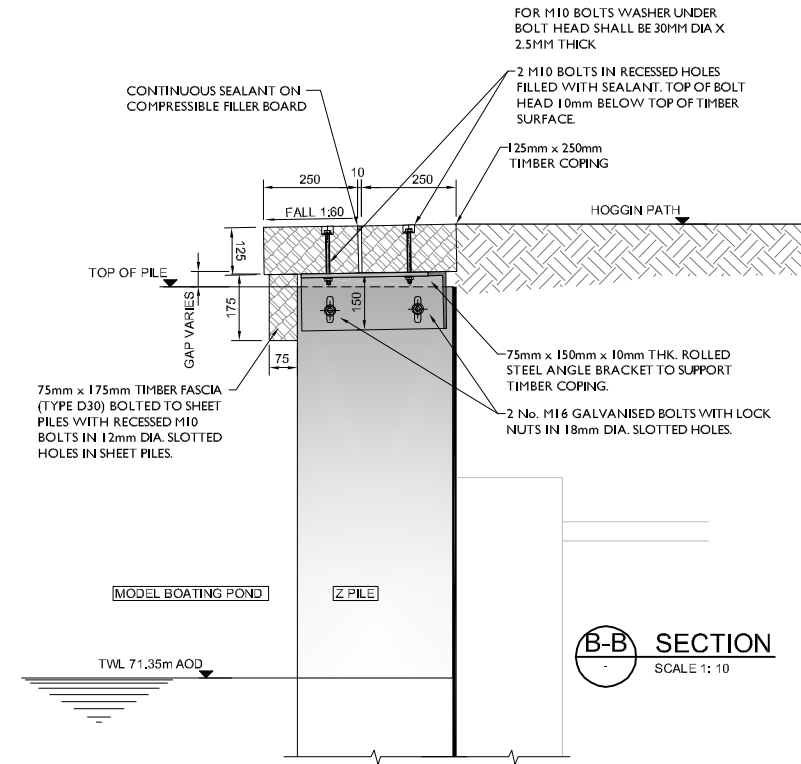
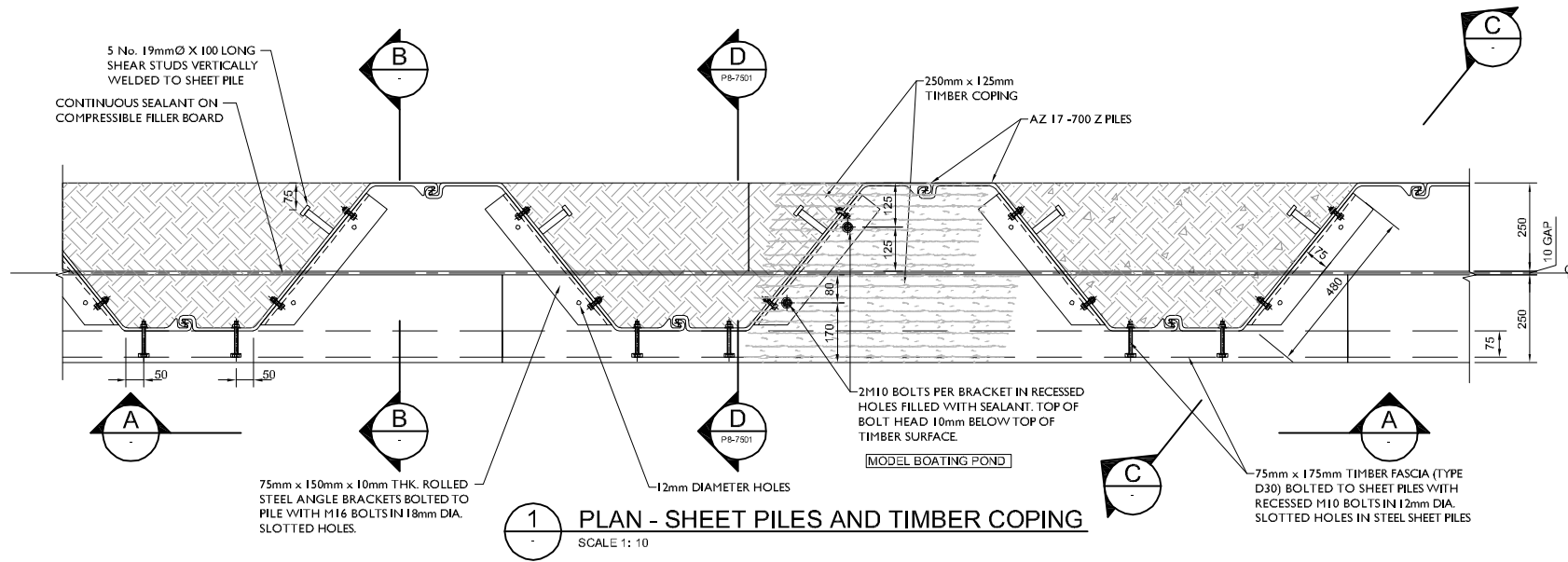


0 10 100
MILLIMETRES



SAFETY, HEALTH AND ENVIRONMENTAL INFORMATION

In addition to the hazards/risks normally associated with the types of work detailed on this drawing, note the following:

CONSTRUCTION

MAINTENANCE/CLEANING

DECOMMISSIONING/DEMOLITION

It is assumed that all works will be carried out by a competent contractor working, where appropriate, to an approved method statement.

NOTES

- ALL DIMENSIONS ARE IN MILLIMETRES.
- EXCAVATION TO BE EXTENDED TO SOUND MATERIAL IF DIRECTED BY THE ENGINEER TO BE BACKFILLED WITH TYPE 1 SUB-BASE MATERIAL.
- HERBICIDE SUITABLE FOR USE NEXT TO WATERWAYS TO BE APPLIED EVENLY ON FORMATION AREAS OF PAVED AREAS. IT SHALL BE NON-POISONOUS TO HUMAN BEINGS, ANIMALS AND INSECTS.
- ALL TIMBER TO BE OAK, F.S.C CERTIFIED
- ALL NUTS, BOLTS AND WASHERS AND STRUCTURAL STEEL TO BE GALVANISED.

Rev.	Date	Description	By	Chk'd	App'd
C1	20/02/2015	FOR CONSTRUCTION	IF	AW	LB

Drawing Status					Subsity
FOR CONSTRUCTION					A

ATKINS	Woodcote Grove Ashley Road Epsom Surrey KT18 5BW
	Tel: +44 (0)1372 726140 Fax: +44 (0)1372 740055 www.atkinsglobal.com

Copyright © Atkins Limited (2013)

Client	City of London Corporation
--------	----------------------------

Project Title	HAMPSTEAD HEATH PONDS PROJECT
---------------	-------------------------------

Drawing Title	MODEL BOATING POND LANDSCAPE AND EDGE HARD LANDSCAPE DETAILS SHEET 1 OF 1
---------------	--

Scale	Designed	Drawn	Checked	Authorised
1:10	AW	IF	AW	LB
Original Size	Date	Date	Date	Date
A1	19/02/2015	19/02/2015	19/02/2015	19/02/2015

Drawing Number	Revision
5117039-ATK-P4-ZZ-DR-L-7500	C1