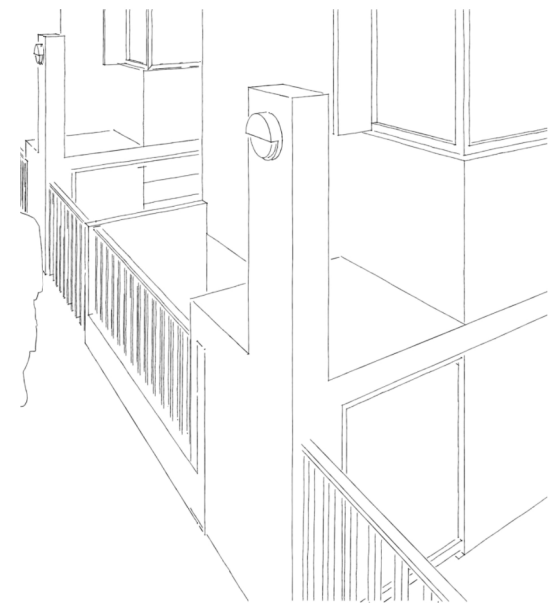


PROPOSED PLAN ALONG COLLEGE LANE

- EXTERNAL LIGHTING SPECIFICATION:
- ALL LIGHTING WALL-MOUNTED AT LEAST 2.4m ABOVE GROUND
  - LIGHTING TO HAVE MINIMUM COLOUR RENDERING INDEX OF 60Ra
  - LIGHTING TO ACHIEVE AT LEAST 20 LUX AVERAGE LEVEL OF ILLUMINANCE

- ⊗ LIGHT LOCATIONS
- - - AREA ILLUMINATED

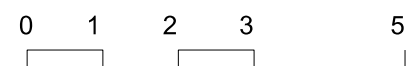
3D SKETCH DETAIL:



PROPOSED FRONT ELEVATION ALONG COLLEGE LANE

EXTERNAL LIGHTING TO COLLEGE LANE

REVISION:  
A 12/02/2015 3D detail added



1-8 COLLEGE YARD, NW5 1NX, LONDON  
External Lighting onto College Lane

PLANNING APPLICATION JULY 2014

**G M L Architects**

UNIT 3,1-4 Christina Street, London, EC2A 4PA  
Tel: 020 7729 9595 Fax: 020 7729 1801 info@gmlarchitects.co.uk  
SCALE: 1:100  
ISSUED FOR: PLANNING  
FIRST ISSUED: 12/02/2015 **4129/P/055 A**